

# Woolwich/Wellesley Townships

## Elementary Schools Pupil Accommodation Review **Accommodation Review Committee Meeting #11**

March 21, 2012

Linwood P.S. Library 6:30 – 8:00 pm



Waterloo Region  
District School Board

# Agenda

- 1. Welcome**
- 2. ARC Meeting # 10 – Draft Minutes**
- 3. Scenario Discussion**
- 4. Additional Requested Information**  
**Facilities**  
**Rural Education Strategy**
- 5. Future Meeting Dates/Times**



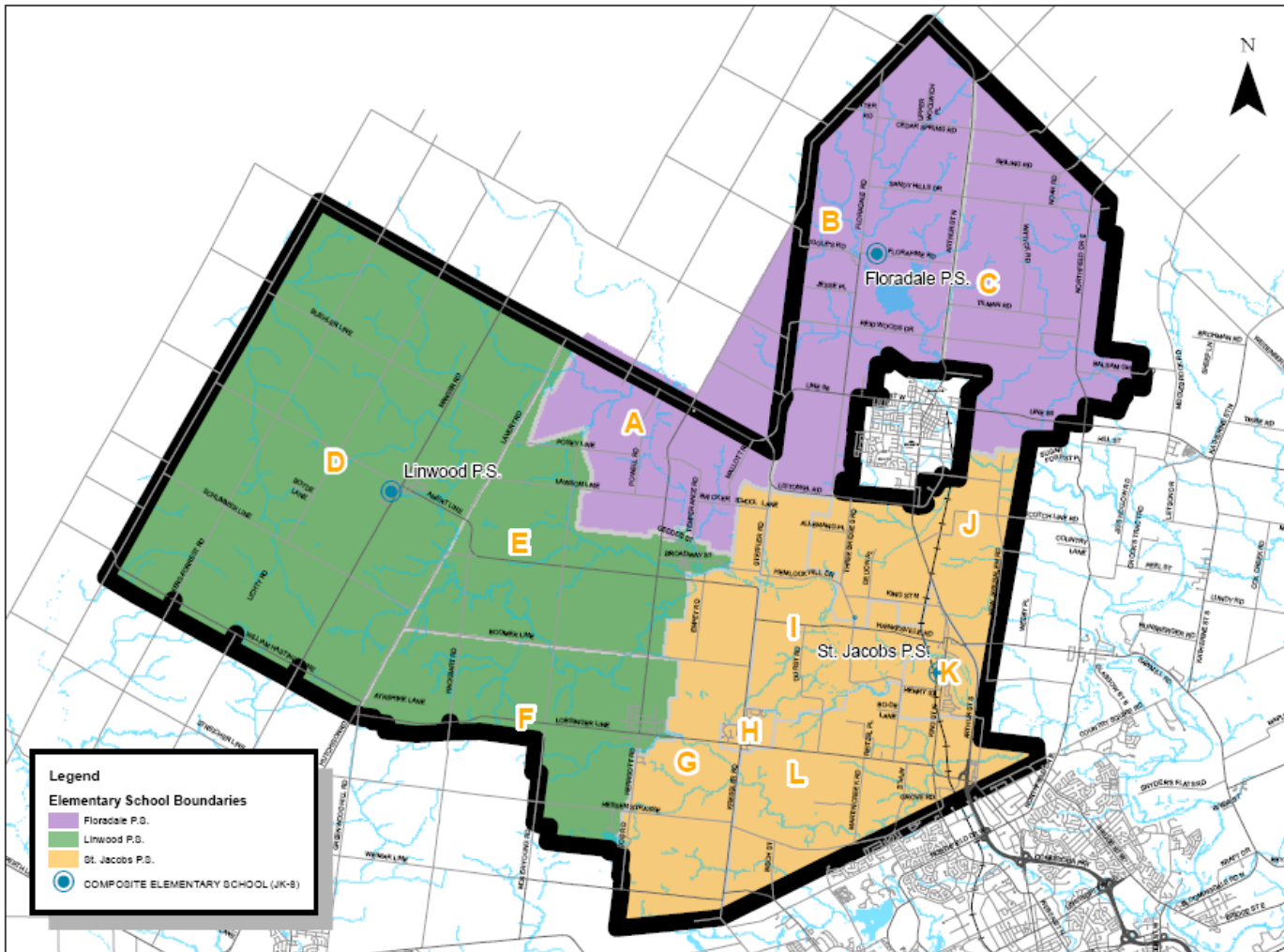
## 4. Scenario Discussion

### Scenarios to take to public meeting # 2- Scenario Groupings

1. **Status Quo** ✓
2. Three Bridges Open with defined attendance area boundary
  - **Scenario 1** ✓
  - Scenario 8
  - Scenario 9
3. Three Bridges closed (TBD)
  - Scenario 2
  - Scenario 3
  - ~~Scenario 5~~
  - Scenario 6
  - Scenario 7

# 4. Scenario Discussion

## Woolwich and Wellesley Townships Review: Scenario 2



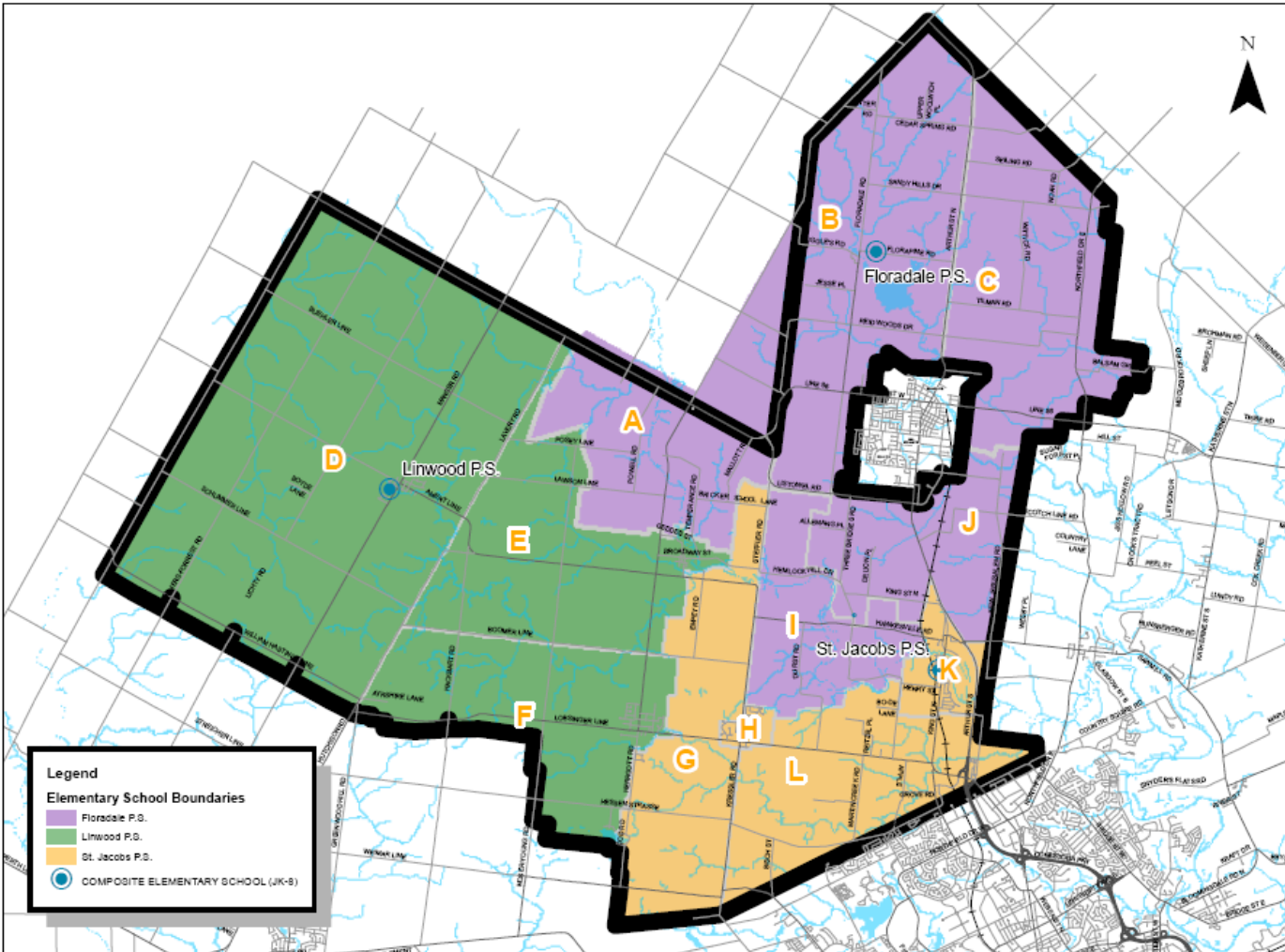
- Details
- Three Bridges PS closed. Students directed to St. Jacobs PS
- All else remains same

### Scenario 2

School	Built Capacity	Capacity with FDK	2012			2014			2016			2018			2020		
			JK-6	7-8	Total	JK-6	7-8	Total	JK-6	7-8	Total	JK-6	7-8	Total	JK-6	7-8	Total
Floradale P.S.	322	322	189	56	245	182	58	240	177	65	242	201	41	242	212	52	264
Linwood P.S.	510	519	359	96	455	369	87	456	381	91	472	397	88	485	400	101	501
St. Jacobs P.S.	348	?	306	83	389	323	92	415	345	98	443	352	102	454	355	103	458
Three Bridges P.S.	92	92	0	0	0	0	0	0	0	0	0	0	0	0	0	0	0
<b>Total</b>	<b>1180</b>		<b>854</b>	<b>235</b>	<b>1089</b>	<b>874</b>	<b>237</b>	<b>1111</b>	<b>903</b>	<b>254</b>	<b>1157</b>	<b>950</b>	<b>231</b>	<b>1181</b>	<b>967</b>	<b>256</b>	<b>1223</b>

# 4. Scenario Discussion

## Woolwich and Wellesley Townships Review: Scenario 3



- Details
- Three Bridges PS closed. Students directed to St. Jacobs PS and Floradale PS.
- St. Jacobs PS gets Areas G, H, K, L.
- Floradale PS gets Areas I, J from St. Jacobs PS.

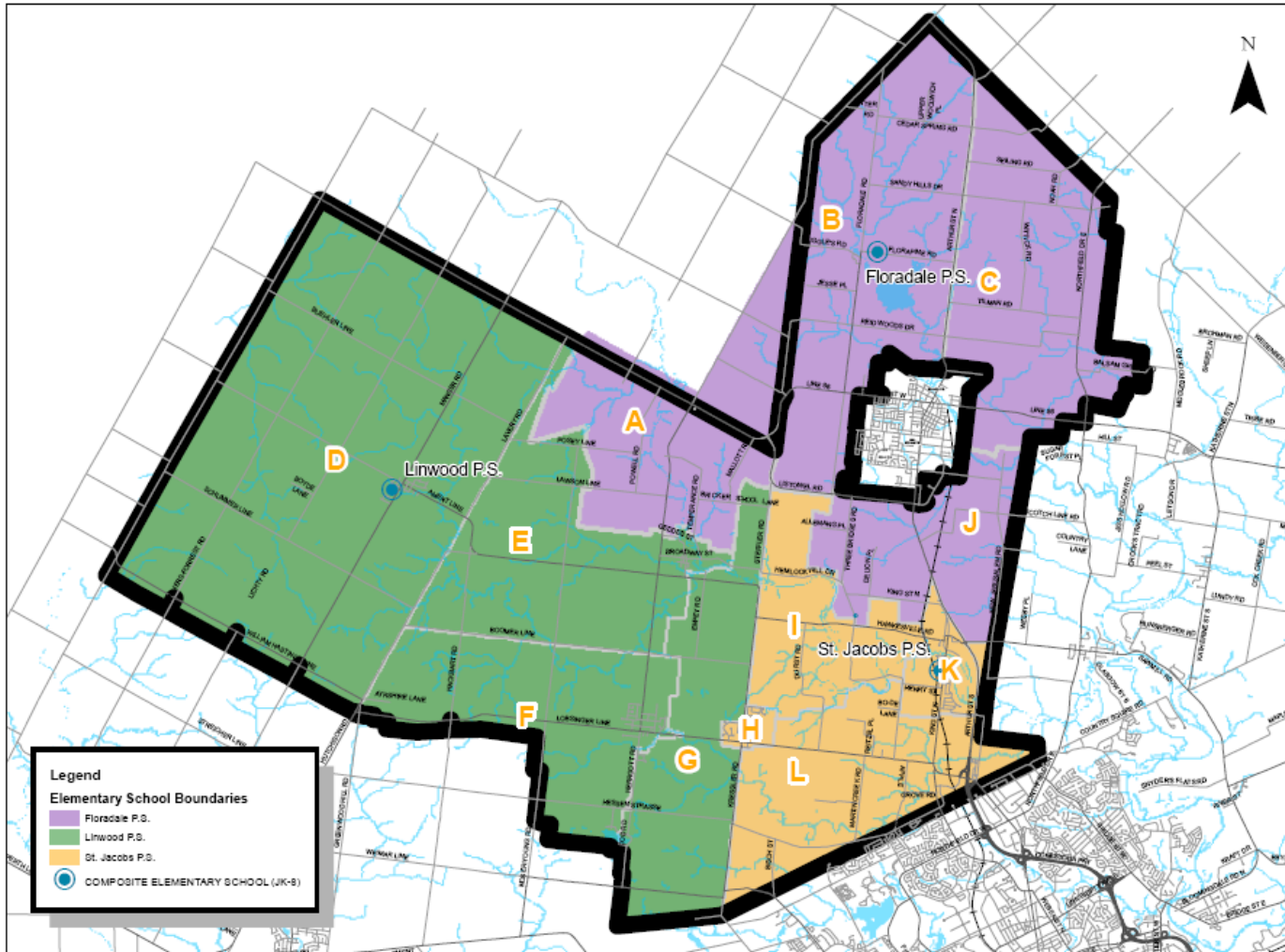
Scenario 3

School	Built Capacity	Capacity with FDK	2012			2014			2016			2018			2020		
			JK-6	7-8	Total	JK-6	7-8	Total	JK-6	7-8	Total	JK-6	7-8	Total	JK-6	7-8	Total
Floradale P.S.	322	322	231	74	305	225	72	297	220	81	301	241	60	301	246	69	315
Linwood P.S.	510	519	359	96	455	369	87	456	381	91	472	397	88	485	400	101	501
St. Jacobs P.S.	348	?	264	65	329	280	78	358	302	82	384	312	83	395	321	86	407
Three Bridges P.S.	92	92	0	0	0	0	0	0	0	0	0	0	0	0	0	0	0
<b>Total</b>	<b>1180</b>		<b>854</b>	<b>235</b>	<b>1089</b>	<b>874</b>	<b>237</b>	<b>1111</b>	<b>903</b>	<b>254</b>	<b>1157</b>	<b>950</b>	<b>231</b>	<b>1181</b>	<b>967</b>	<b>256</b>	<b>1223</b>



# 4. Scenario Discussion

## Woolwich and Wellesley Townships Review: Scenario 6



### • Details

• Three Bridges PS closed. Students directed to St. Jacobs PS except

Area J which is directed to Floradale.

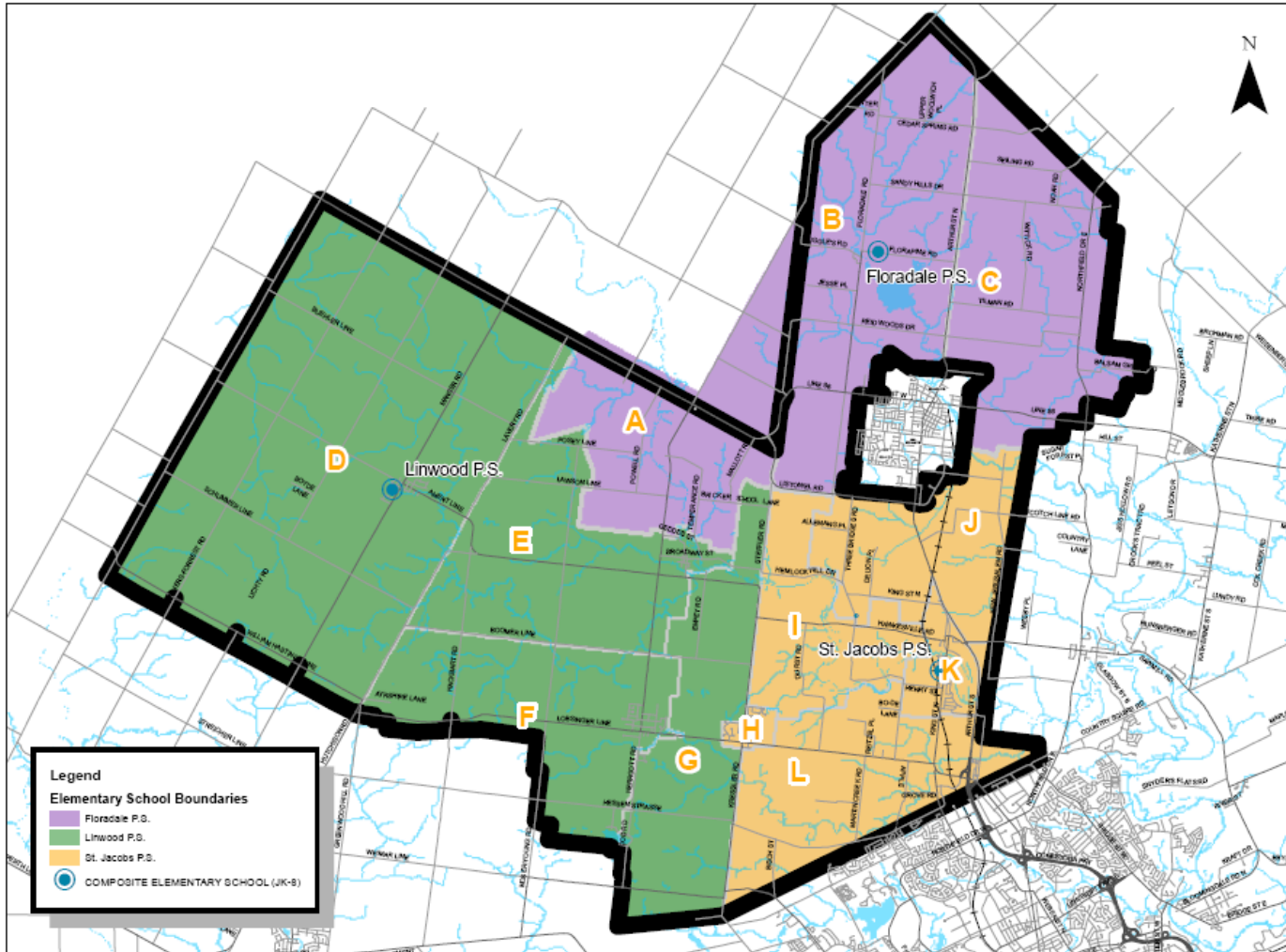
• Steffler Rd. Area (not shown b/w Area A, J directed to Floradale)

Scenario 6

School	Built Capacity	Capacity with FDK	2012			2014			2016			2018			2020		
			JK-6	7-8	Total	JK-6	7-8	Total	JK-6	7-8	Total	JK-6	7-8	Total	JK-6	7-8	Total
Floradale P.S.	322	322	212	64	291	207	63	285	198	73	286	223	49	287	231	59	305
Linwood P.S.	510	519	381	100	481	390	93	483	404	96	500	418	97	515	423	107	530
St. Jacobs P.S.	348	?	261	71	317	277	81	343	301	85	371	309	85	379	313	90	388
Three Bridges P.S.	92	92	0	0	0	0	0	0	0	0	0	0	0	0	0	0	0
<b>Total</b>	<b>1180</b>		<b>854</b>	<b>235</b>	<b>1089</b>	<b>874</b>	<b>237</b>	<b>1111</b>	<b>903</b>	<b>254</b>	<b>1157</b>	<b>950</b>	<b>231</b>	<b>1181</b>	<b>967</b>	<b>256</b>	<b>1223</b>

# 4. Scenario Discussion

## Woolwich and Wellesley Townships Review: Scenario 7



- Details
- Three Bridges PS closed. Students directed to St. Jacobs PS except Area G which is directed to Linwood.

### Scenario 7

School	Built Capacity	Capacity with FDK	2012			2014			2016			2018			2020		
			JK-6	7-8	Total	JK-6	7-8	Total	JK-6	7-8	Total	JK-6	7-8	Total	JK-6	7-8	Total
Floradale P.S.	322	322	189	56	245	182	58	240	177	65	242	201	41	242	212	52	264
Linwood P.S.	510	519	381	100	481	390	93	483	404	96	500	418	97	515	423	107	530
St. Jacobs P.S.	348	?	284	79	363	302	86	388	322	93	415	331	93	424	332	97	429
Three Bridges P.S.	92	92	0	0	0	0	0	0	0	0	0	0	0	0	0	0	0
<b>Total</b>	<b>1180</b>		<b>854</b>	<b>235</b>	<b>1089</b>	<b>874</b>	<b>237</b>	<b>1111</b>	<b>903</b>	<b>254</b>	<b>1157</b>	<b>950</b>	<b>231</b>	<b>1181</b>	<b>967</b>	<b>256</b>	<b>1223</b>

## 4. Additional Information – Facility Condition Assessment

School	Total GFA (m <sup>2</sup> )	OTG	\$/m <sup>2</sup> Funded	m <sup>2</sup> / Student	\$ Funded if Built New	5 Yr Renewal Needs From Assessment	10 Yr Renewal Needs From Assessment	Facility Condition Index (FCI)
Floradale	2,785	322	1847.5 <sub>3</sub>	11.32	\$6,734,321	\$0	<b>\$726,000</b>	0.00
Linwood	4,387	510	1847.5 <sub>3</sub>	10.24	\$9,648,541	\$2,383,000	<b>\$3,164,000</b>	0.25
St. Jacobs	2,899	348	1847.5 <sub>3</sub>	11.07	\$7,117,351	\$1,812,000	<b>\$2,114,000</b>	0.25
Three Bridges	1,206	92	1848.5 <sub>3</sub>	13.87	\$2,358,798	\$508,000	<b>\$542,000</b>	0.22

- Facility Condition Index = Renewal Needs/Cost to build new
- Previous Ministry of Education Prohibitive to Repair (PTR) funding threshold FCI = 0.65

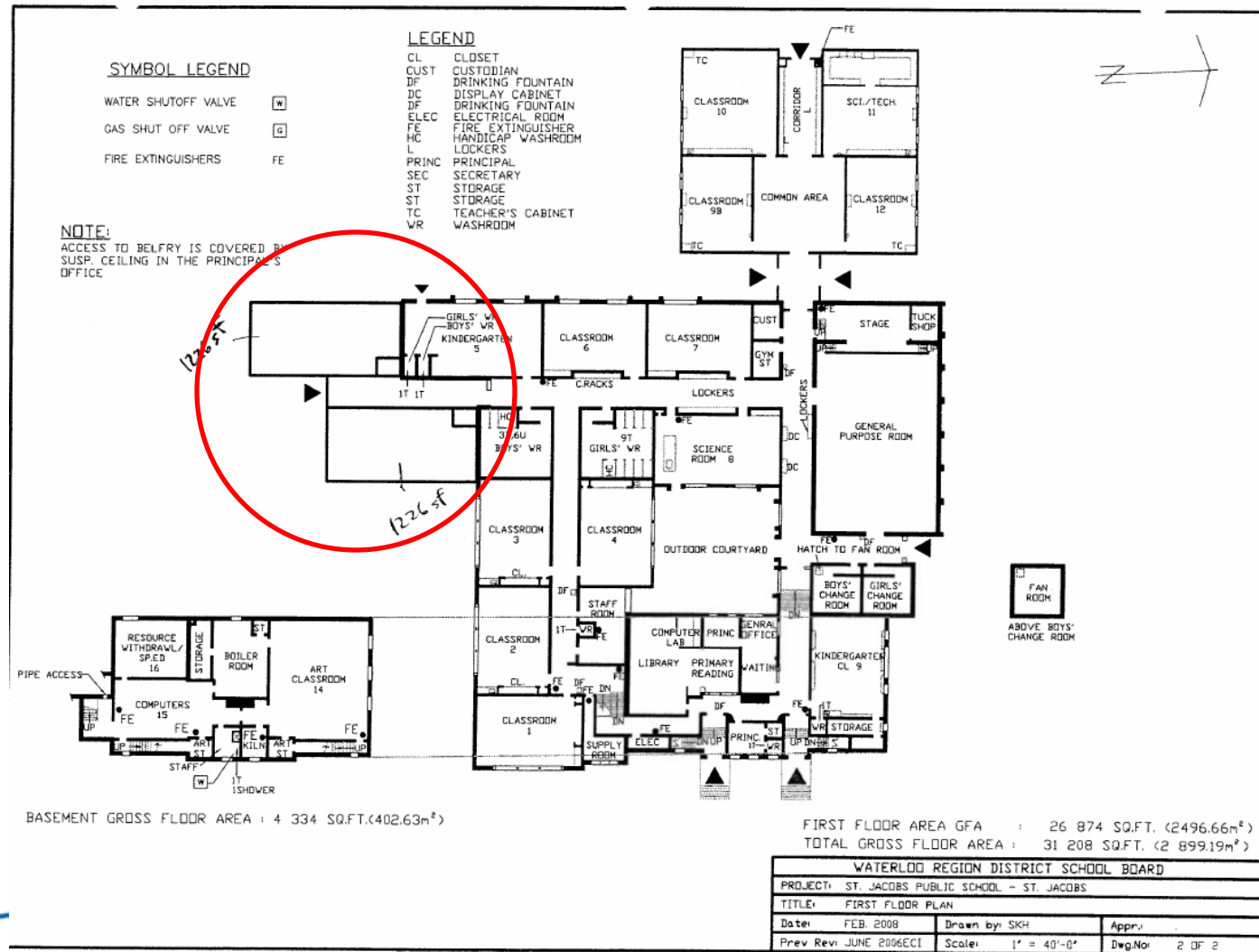






# 4. Additional Information

## St. Jacobs PS, and construction



## 4. Additional Information

### Gym space benchmarking JK-8 schools

SCHOOL NAME	ORGANIZATION	Oct 2010 Enrolment	OTG	GYM (ft2)	Gym Programming spaces	Gym ft2 / Student Enrolment	Gym ft2/OTG	Gym ft2/ Student Enrolment (All Schools)	Gym ft2/OTG Ranking (All Schools)	Gym ft2/ Student Enrolment Ranking (JK-8)	Gym ft2/OTG Ranking (JK-8)
CLEMENS MILL	JK-8	796	472	4622	2	5.81	9.79	8.00	37	1	9
LESTER B. PEARSON	JK-8	736	607	4830	2	6.56	7.96	16.00	23	2	4
LAURELWOOD	JK-8	717	366	4848	2	6.76	13.25	19.00	83	3	16
CONESTOGO	JK-8	338	224	2415	1	7.14	10.78	26.00	53	4	13
EDNA STAEBLER	JK-8	714	639	5286	2	7.40	8.27	28.00	29	5	7
ST. JACOBS	JK-8	319	348	2376	1	7.45	6.83	29.00	14	6	1
LINWOOD	JK-8	469	510	3712	2	7.91	7.28	33.00	17	7	2
WELLESLEY	JK-8	643	635	5232	2	8.14	8.24	37.00	28	8	6
BADEN	JK-8	579	575	4724	2	8.16	8.22	38.00	27	9	5
WOODLAND PARK	JK-8	563	463	4644	2	8.25	10.03	39.00	41	10	11
STEWART AVENUE	JK-8	571	483	4909	2	8.60	10.16	42.00	45	11	12
HESPELER	JK-8	579	686	5024	2	8.68	7.32	44.00	18	12	3
FOREST GLEN	JK-8	543	443	4817	2	8.87	10.87	48.00	56	13	14
SILVERHEIGHTS	JK-8	649	418	6634	2	10.22	15.87	54.00	90	14	18
NORTHLAKE WOODS	JK-8	477	492	4900	2	10.27	9.96	55.00	39	15	10
FLORADALE	JK-8	251	322	2818	1	11.23	8.75	68.00	33	16	8
A. R. KAUFMAN	JK-8	438	440	5085	2	11.61	11.56	72.00	67	17	15
BRESLAU	JK-8	483	325	5800	2	12.01	17.85	73.00	95	18	19
CEDAR CREEK	JK-8	422	256	6268	2	14.85	24.48	88.00	100	19	21
LINCOLN HEIGHTS	JK-8	330	409	5601	2	16.97	13.69	97.00	85	20	17
THREE BRIDGES	01-8	83	92	1659	1	19.99	18.03	100.00	96	21	20



## 4. Additional Information

### Library Assessments

School	Score (2006)	Subsequent Significant Changes
Alison Park	12	School in temporary location, closing 2012
Ayr	13	
Blair Road	18	
Bridgeport	12	Library moved to new, renovated location. – significant improvement
Chalmers	17	
Conestogo	17	
Courtland	17	Some minor renovations have improved the facility
Crestview	18	
Dickson	12	
Floradale	15	Old school closed – new school and library.
Grand View C	17	Old school will close June 2012 – new school and library.
Grandview NH	12	Library has been renovated – significant improvement.
Hillcrest	19	

Hillcrest	19	
JF Carmichael	17	
John Mahood	19	
MacKenzie King	17	
Manchester	14	
Meadowlane	19	
New Dundee	14	
Prueter	19	
Queen Elizabeth	16	
Riverside	13	
Rockway	17	
Ryerson	16	Old school closed New school and library.
	19	
St. Jacob's	18	
Three Bridges	13	Library moved to new location in school. Some improvement.
Westmount	13	Computer lab moving out of library & some renos, March 2012.
Wilson Ave	19	Some renovations have improved facility.
Winston Churchill	18	

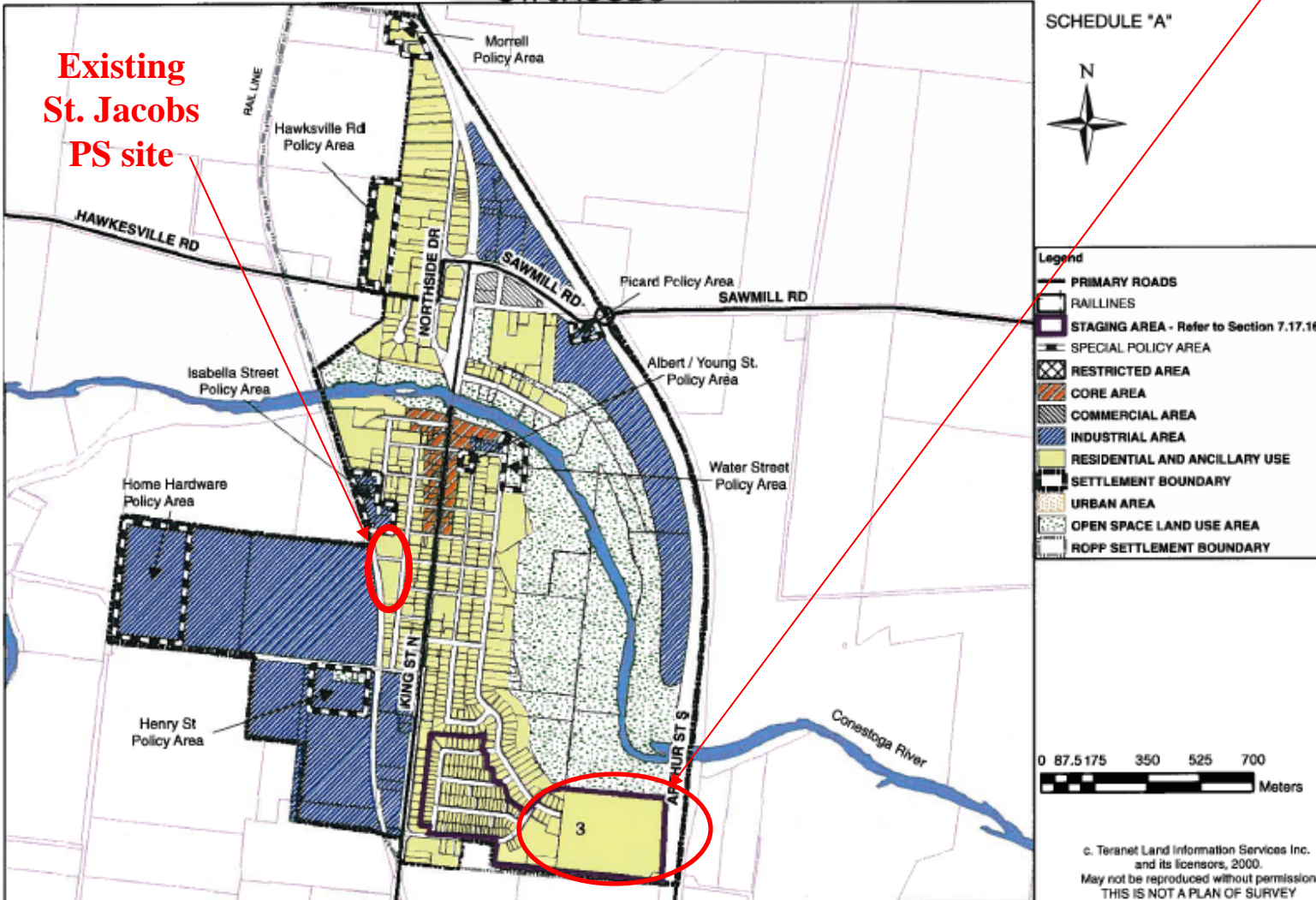
# 4. Additional Information

## St. Jacobs additional development

### ValleyView lands

- 144-154 residential units proposed
- Last remaining greenfield development in St. Jacobs Settlement area
- Timing unclear
- Approximate student yield 45 students (JK-8)

### TOWNSHIP OF WOOLWICH SETTLEMENT PLAN - "ST. JACOBS"





## 4. Additional Information

### WRDSB Rural Education Strategy/Rural Education Services Program

- Program targeted towards secondary school aged population (14+) who have historically not been involved in learning/programs with WRDSB
- Variety of learning options (Credit/non-credit courses, Supervised Alternative Learning SAL, Etc.)
- Not tied to any particular facility. Considers use of 'satellite' service model (existing schools, community centres, other locations), sometimes outside traditional school hours.



## 4. Additional Information

### Rural Education Strategy and the Accommodation Review

- *Accommodation Review Process* focused on the accommodation of elementary students who are currently enrolled or projected to be enrolled.
- *Rural Education Services Program* focused on meeting the learning needs of secondary (14+) youth, not currently enrolled in programs or involved in learning facilitated by the WRDSB.
- The WRDSB is committed to work collaboratively to identify viable options to address the unique education needs of the rural community from JK-12 within the limits of the resources available to the system and according to legislated requirements. These rural community refers primarily to those in unique populations in Woolwich and Wellesley Townships, who have had limited or no involvement, in the past, with the WRDSB.



# Woolwich & Wellesley Townships Accommodation Review

### Public Meeting # 2

•Wednesday, April 4, 2012: 7:00 - 8:30 p.m.

### •Agenda

- Review Accommodation Review (What & why)
- Process (Issues, Objectives, Scenarios, Recommendation)
- ARC Status (Issues, Objectives, Scenarios)
- Present Objectives
- Present Scenarios
- Timeline
- Rural Education Strategy

