

West Galt

Elementary Schools Pupil Accommodation Review

Accommodation Review Committee (ARC)

Meeting #7

February 15, 2012

St. Andrew's P.S. Library

5:30 – 7:00 pm



Waterloo Region
District School Board

Agenda

1. Welcome
2. ARC Meeting #6 – Draft Minutes Approval
3. Requested information:
 - French Immersion Distribution
 - Estimated number of students in development areas
 - Area O and J Transportation
4. Expert Panel Discussion:
 - Learning Services
 - Facility Services
5. Public Meeting #2
6. Future Meeting Dates
7. Roundtable/Wrap-up



Building Condition Assessment

- Conducted Dec 2011- Jan 2012 by Anderson Building Science – John Pogacar (P.Eng)
 - Blair Rd.
 - Dickson
 - Tait
 - St. Andrew's
 - Highland



Waterloo Region
District School Board

School Renewal Funding Budgets

Z02	Z04	Z12	Z15	Z23	Z25	Z33	Z38	Z50
Instruc- tional Computer Infrastruc- ture	Environ- mental	Program Related Projects	School Communi- -cation Systems	Interior Finishes	Mechan- ical/Electri- cal	Building Envelope/ Structure	Access- ibility	Site Improve- ments



Waterloo Region
District School Board

Condition Assessment Cost Information

	Cost (\$000)									
	Z02 Instructional Computer Infrastructure	Z04 Environmental	Z12 Program Related Projects	Z15 School Communication Systems	Z23 Interior Finishes	Z25 Mechanical/ Electrical	Z33 Building Envelope/ Structure	Z38 Accessibility	Z50 Site Improvements	Total
Blair Road					145	174	100	Yes	280	699
Dickson					437	266	580	No	29	1312
Highland					301	891	370	Yes	100	1662
St. Andrew's					587	413	510	Partial	159	1669
Tait St.				45	494	972	473	Partial	179	2118



Waterloo Region
District School Board

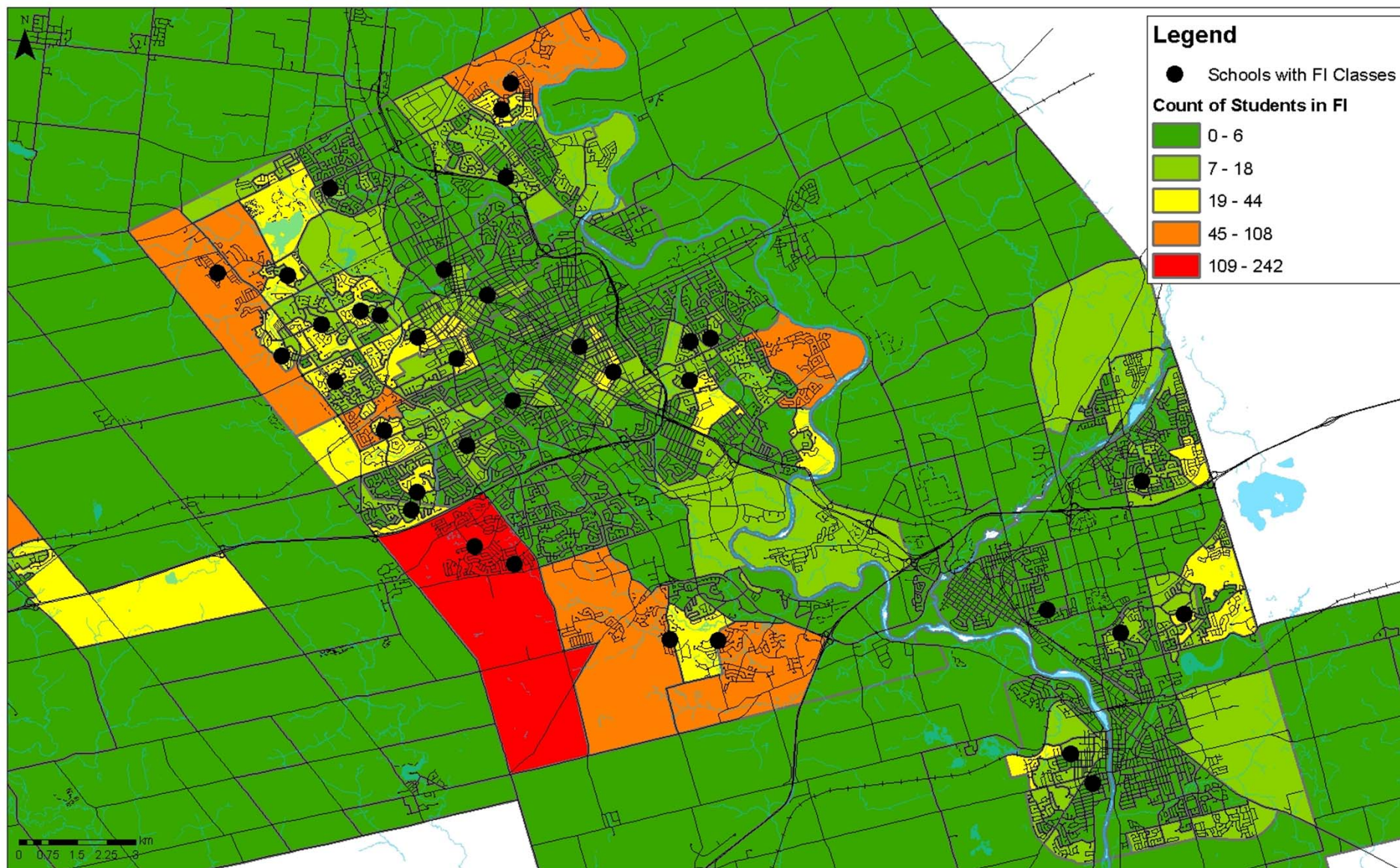
Facility Condition Index

School	Total GFA (m ²)	OTG	\$/m ² Funded	m ² / Student	\$ Funded if Built New	5 Yr Renewal Needs From Assessment	Facility Condition Index (FCI)
Blair Road	2620	294	1847.53	11.34	\$6,159,591	\$699,000	0.11
Dickson	1511.99	161	1847.53	13.87	\$4,125,664	\$1,312,000	0.32
Highland	2949	464	1847.53	11.07	\$9,489,801	\$1,662,000	0.18
St. Andrew's	4880.2	424	1847.53	10.56	\$8,272,205	\$1,669,000	0.20
Tait Street	3118.29	348	1847.53	11.07	\$7,117,351	\$2,118,000	0.30



Waterloo Region
District School Board

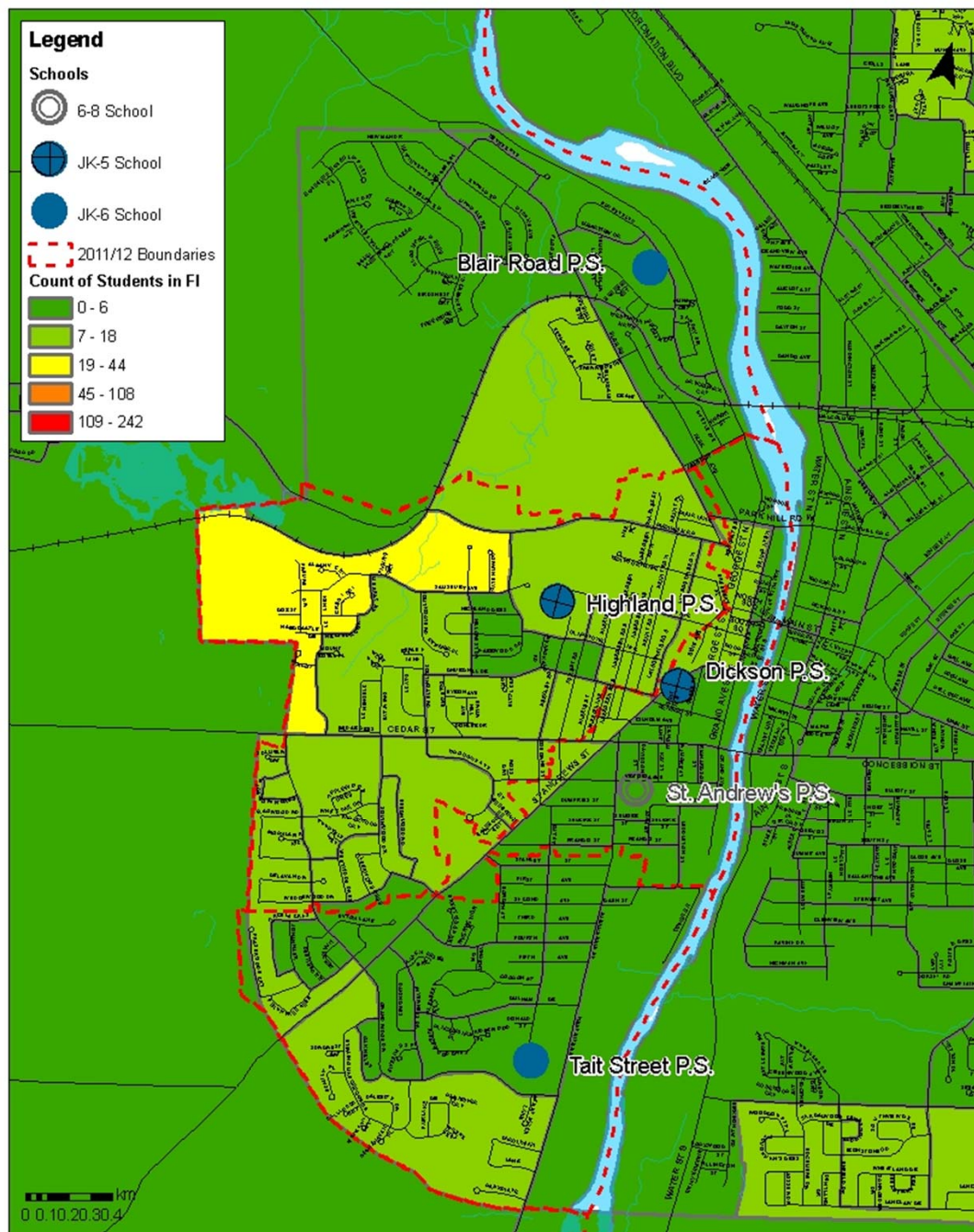
2011 Distribution of Elementary Students in French Immersion Classes by DA



February 15, 2012

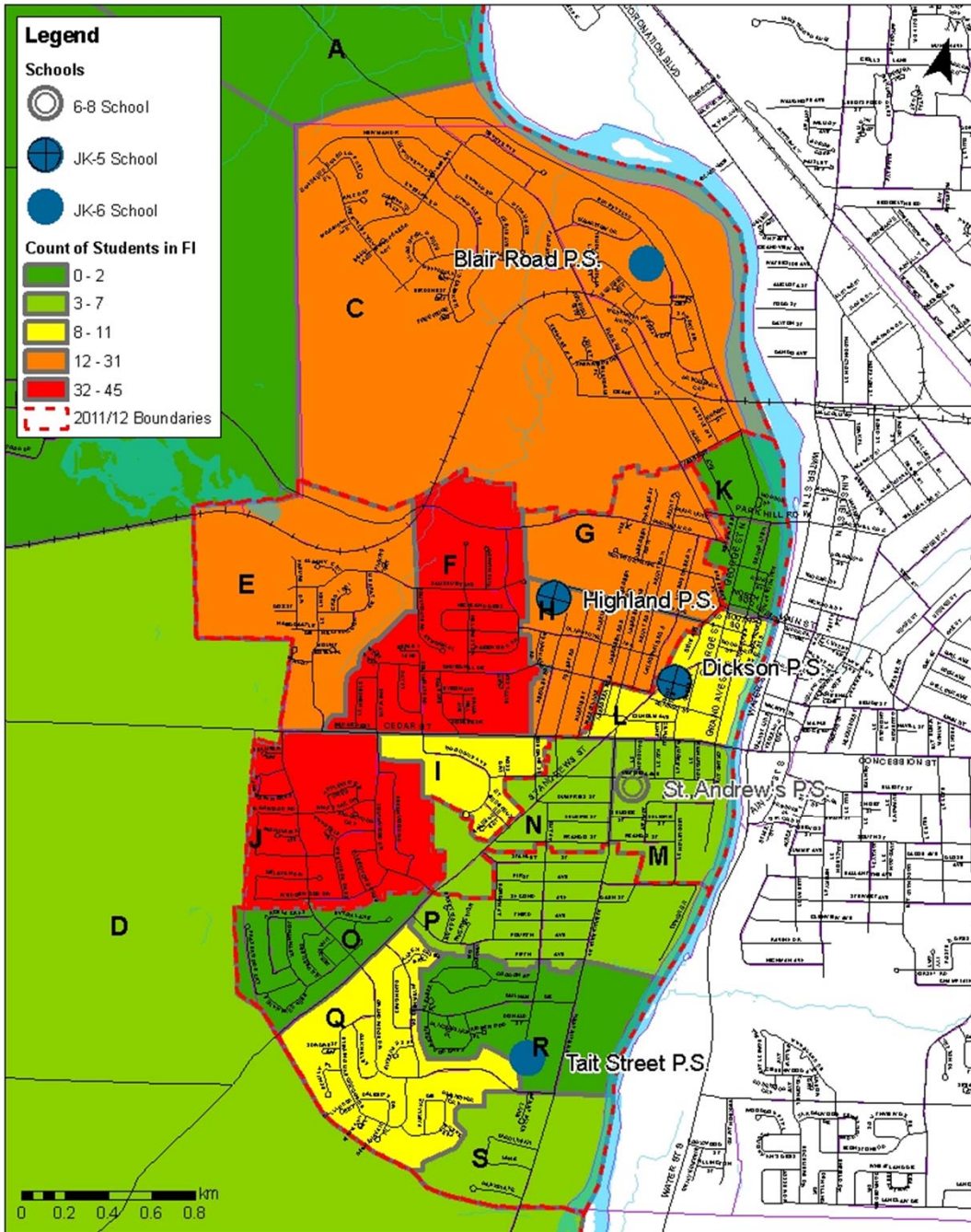
Waterloo Region
District School Board

Distribution of Elementary Students in French Immersion Classes by DA



French Immersion Distribution

Distribution of Elementary Students in French Immersion Classes by Projection Area

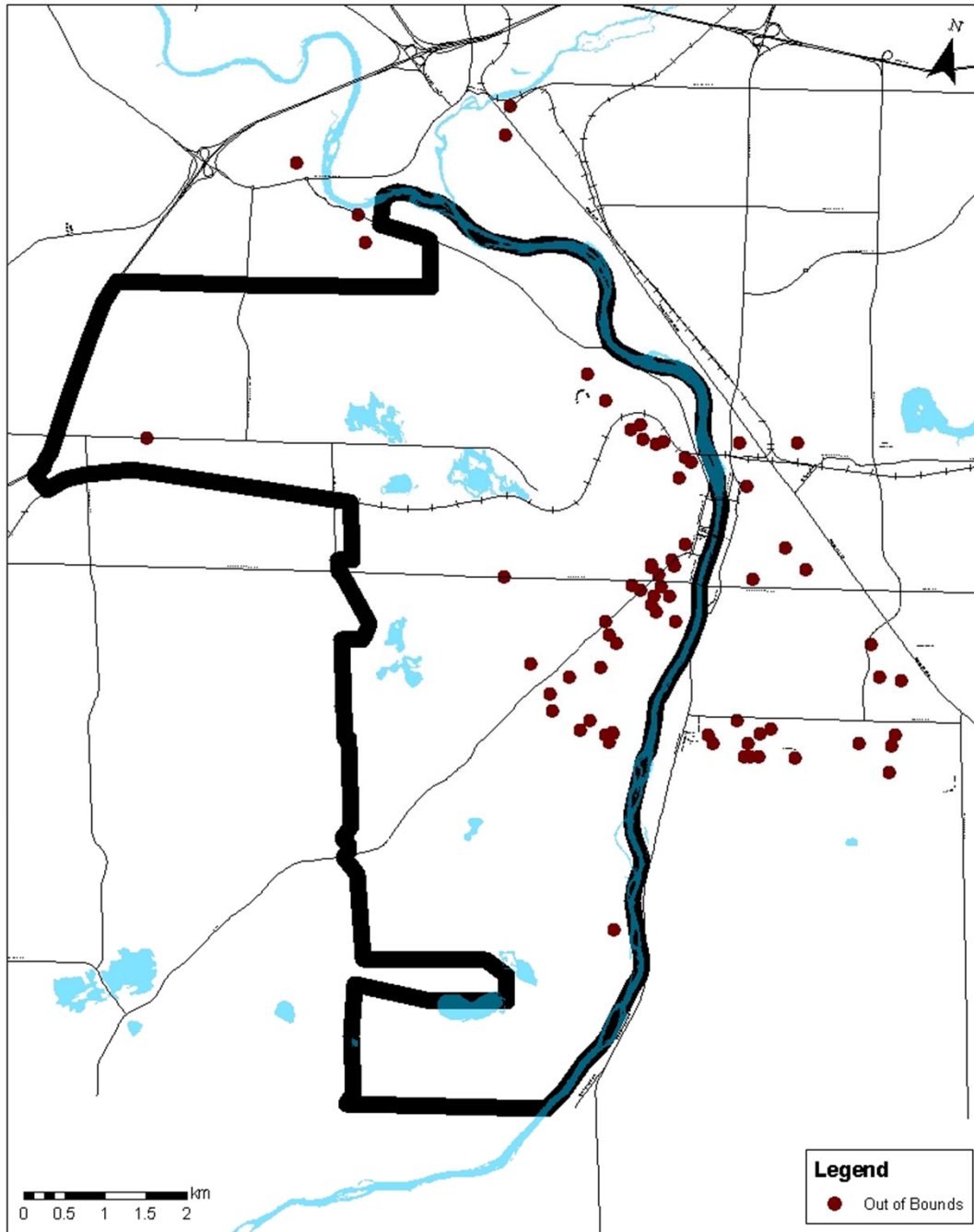


French Immersion Distribution

West Galt French Immersion Students By Area

AREA	Grade 1	Grade 2	Grade 3	Grade 4	Grade 5	Grade 6	Grade 7	Grade 8	Total
A	0	0	0	0	0	0	0	0	0
B	0	0	0	1	0	0	1	0	2
C	2	4	5	0	2	3	3	2	21
D	1	0	0	0	0	1	0	0	2
E	3	3	6	5	6	4	3	4	34
F	2	7	6	8	5	2	7	2	39
G	3	3	3	2	3	5	4	5	28
H	4	5	10	2	4	4	4	2	35
I	4	1	0	3	1	1	3	1	14
J	10	7	7	5	5	6	8	7	55
K	0	0	0	0	0	0	0	0	0
L	0	2	1	0	3	0	0	2	8
M	1	1	2	0	2	0	0	0	6
N	2	0	2	0	1	1	0	0	6
O	1	0	0	0	0	1	0	0	2
P	2	0	0	0	0	0	1	1	4
Q	1	3	0	1	2	2	0	3	12
R	0	1	0	0	0	0	0	1	2
S	2	3	1	0	0	2	0	1	9
Total	38	40	43	27	34	32	34	31	279

Highland P.S. Out of Boundary Students



Highland P.S.

- 104 Out of Boundary Students
 - 47 Students outside West Galt Review Area

Historic Highland P.S. Gr. 1 French Immersion Numbers

Year	Home School Students	Out of Area Students	Home School Waiting List	Out of Area First Choice Waiting List
2007	35	5	0	14
2008	30	16	0	2
2009	40	6	0	1
2010	34	12	0	2
2011	34	12	0	1
2012	37	9	0	2



French Immersion Class formation/consolidation

From Administrative Procedure 1000:

3. Class Formation/ Consolidation

3.1 Grade One Classes

3.1.1 By mid-February a school must have at least twenty Senior Kindergarten students wishing to take the program before it can be considered for offering a grade 1 class of the Partial French Immersion Program.

3.1.1 When a class reaches an enrollment of twenty-three students, a waiting list of additional students who wish to enroll in the program is established.

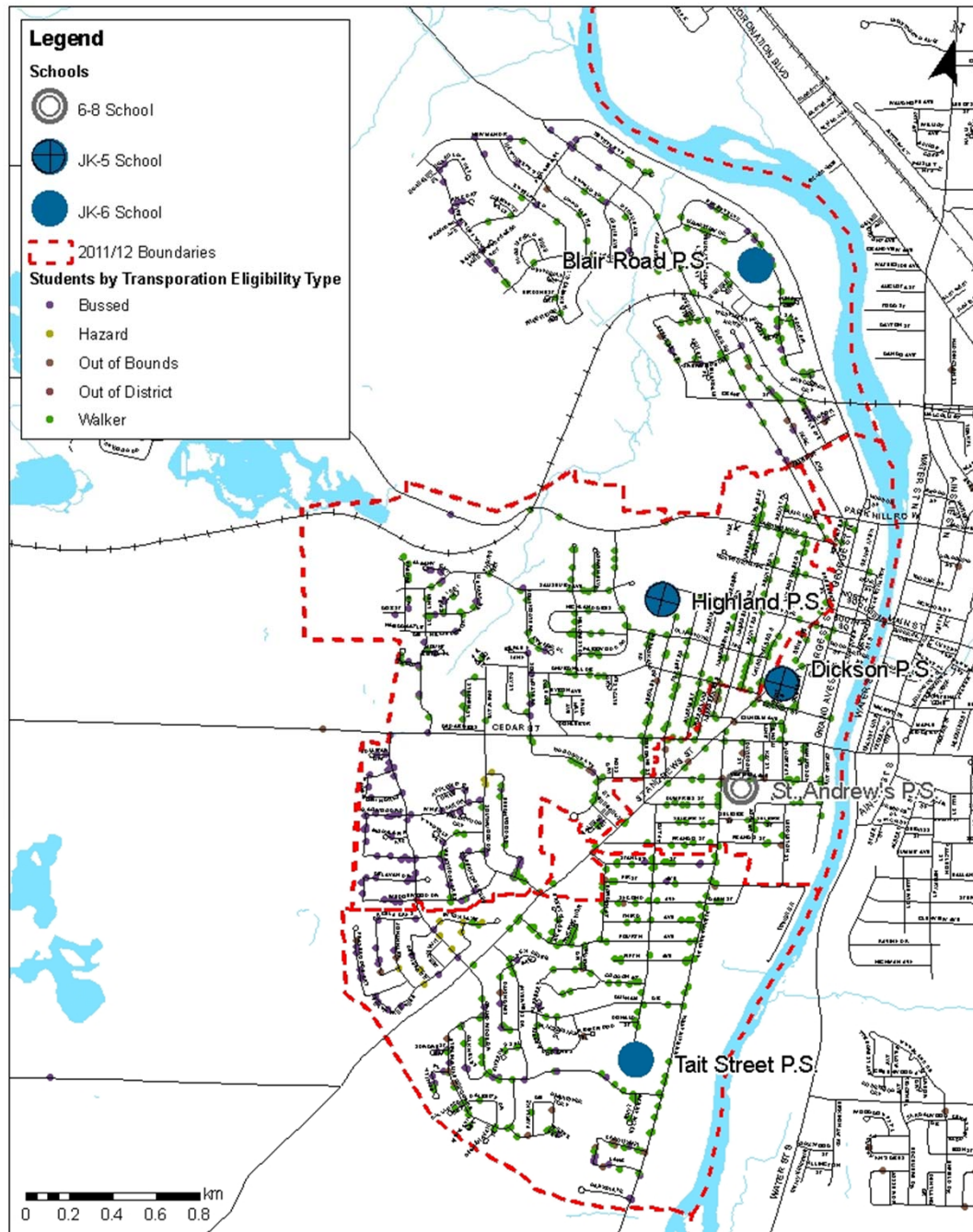
3.1.2 If space is not available for out-of-area students at an immersion site due to overcrowding, a minimum of eighteen home school students will be required to open a grade one class. Home school registrants will be given priority for grade one placements in overcrowded sites until January 31st. Overcrowded sites will be identified by Executive Committee in consultation with the Planning Department. An asterix will be placed beside the site name on the French Immersion Registration Form and an explanation of enrolment limitations will be provided in the body of the registration form.

3.1.3 When space is required to accommodate late entry or waiting list applicants, one grade one French Immersion class at a designated school site may be opened with an initial enrolment lower than twenty students. Executive Committee will approve the designated site(s).

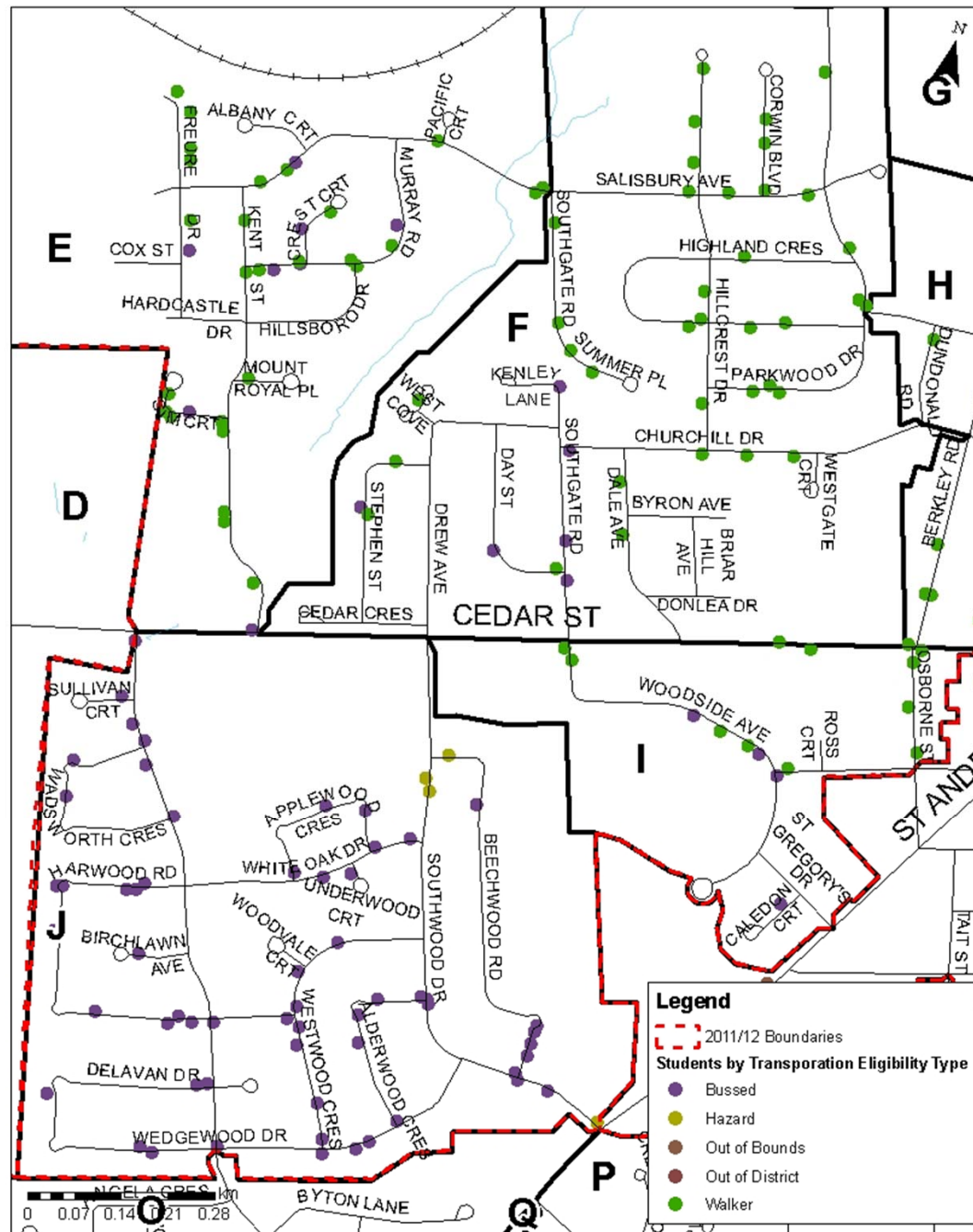
3.1.4 A school may also be designated to begin a grade one Partial French Immersion class under the following conditions:

- the school is geographically isolated from other immersion sites;
- home school and waiting list registrations in the geographic area total twenty or more students;
- space is available in the school;

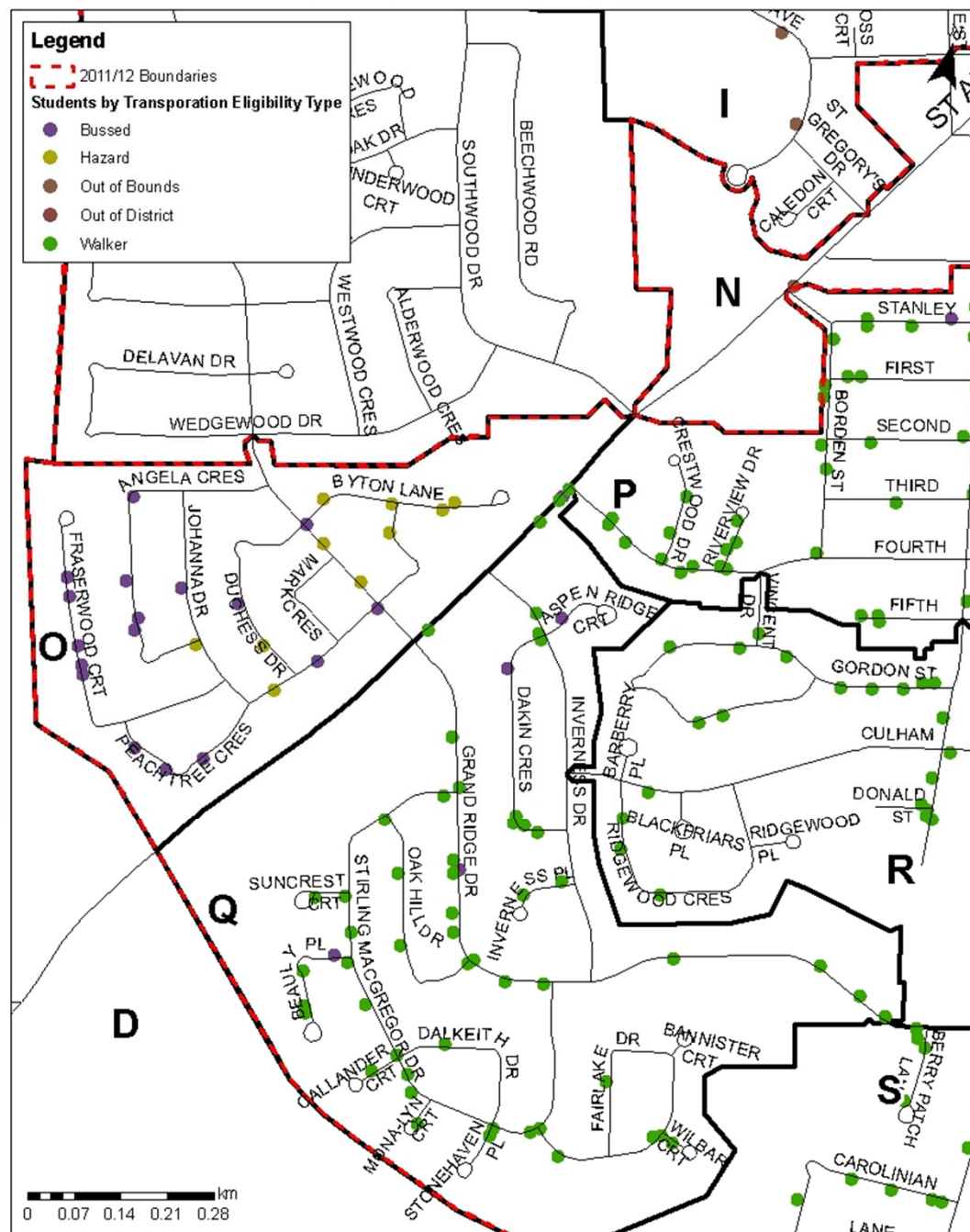
West Galt Students by Transportation Eligibility Type



Highland P.S. Students by Transportation Eligibility Type



Tait Street P.S. Students by Transportation Eligibility Type



Facility Repair Costs by Priority

School	High Priority (2013)	Medium Priority (2016)	Low Priority (2025)	Total
Blair Road P.S.	\$ 198,000	\$ 828,100	\$ 428,500	\$ 1,454,600
Dickson P.S.	\$ 596,000			\$ 596,000
Highland P.S.	\$ 384,000	\$ 360,000		\$ 744,000
St. Andrew's P.S.	\$ 490,200	\$ 1,178,500	\$ 2,498,200	\$ 4,166,900
Tait Street P.S.	\$ 629,000	\$ 388,100	\$ 95,500	\$ 1,112,600
TOTAL	\$ 2,297,200	\$ 2,754,700	\$ 3,022,200	\$ 8,074,100

Draft Objectives

- Evaluate sites for program, size, safety, traffic, bus access, maintenance and general use
- Consider the impact on school sites where changes are proposed
- Increase equity of facilities necessary to deliver curriculum and support student achievement
- Establish sustainable/long-term enrolments that provide equitable learning opportunities for students and staff
- Optimize operating costs
- Reduce the potential for combined grades at a school
- Maximize the number of facilities that adequately meet student and community needs for physical accessibility (be mindful of the Board's priorities and process for physical accessibility of facilities; AODA)
- Identify safety and security issues at facilities
- Be mindful of the Board's priorities and process for office renovations
- Identify opportunities for increasing energy efficiency of review area facilities
- Establish grade configurations that provide the best learning opportunities for students
- Evaluate the distribution and accessibility of Special Education and French Immersion programs

Draft Objectives

- Establish facilities that are in appropriate locations for the long-term (approx. 25 years)
- Determine the need for new facility(ies)
- Establish boundaries that are long-term (approx. 10 years) by taking into account future development and demographic shifts
- Organize attendance areas to make efficient and economical use of the Board's facilities, programs, resources and staff by considering:
 - Walking distances;
 - Efficiency of transportation;
 - Capacity of schools;
 - Concentration of populations;
 - Proximity to other schools; and
 - Effect on feeder schools and surrounding schools
- Optimize the use of facilities by:
 - determining long-term use that includes changes to curriculum and program; and
 - increasing the number of students housed in permanent accommodation
- Determine the viability of a JK-8 school(s) in the review area
- Identify potential community partners that are sustainable and supportive of student achievement
- Identify community partners that may share facilities to the benefit of the Board, students and the community and optimize the use of public assets owned by the Board

Future Meeting Dates

- **ARC Meetings**

- ARC #8: Wednesday March 7, 2012 from 5:30-7:00 pm
- Possible future dates: Tuesday March 20, 2012, Tuesday March 27, 2012, Wednesday March 28, 2012
- Tuesday April 3, Tuesday April 10, Wednesday April 11, 2012

- **Public Meetings**

- Public Meeting # 2: Thursday March 1, 2012 from 7:00-8:30 pm



Contact Information

- Website: www.wrdsb.ca
 - » About Us > Planning Department > Accommodation Reviews > West Galt Elementary Schools
 - » Search “West Galt Review”
- E-mail: boundaryfeedback@wrdsb.on.ca
- Phone: 519-570-0003 ext. 4419

