

# WEST GALT

## Elementary Schools Pupil Accommodation Review

### Re-examination of Recommendations

January 14, 2013

Presentation to the Committee of the Whole



January 14, 2013

Waterloo Region  
District School Board

## Scenario B, Option 1

1. Close Dickson P.S.
2. Add additional classrooms to Tait Street P.S.
3. Modify the boundary for Blair Road P.S.
4. Modify the boundary and add Gr. 6 to Highland P.S.
5. Modify the boundary for Tait Street P.S.
6. Offer only Gr. 7-8 at St. Andrew's P.S.
7. Offer Partial French Immersion at Tait Street P.S.



## Scenario B, Option 1 Implementation Revisions

- Close Dickson P.S. at end of 2013/14 school year;
- Add additional classrooms to Tait Street P.S. to be completed for Sept. 2014
- Delay the addition of Gr. 6 at Highland P.S. to Sept. 2018
- Start Partial French Immersion at Tait Street P.S. in Sept. 2013 with Gr. 1 only
- Modify grandfathering provisions to reflect changes in timing



# Scenario B, Option 1 Boundary

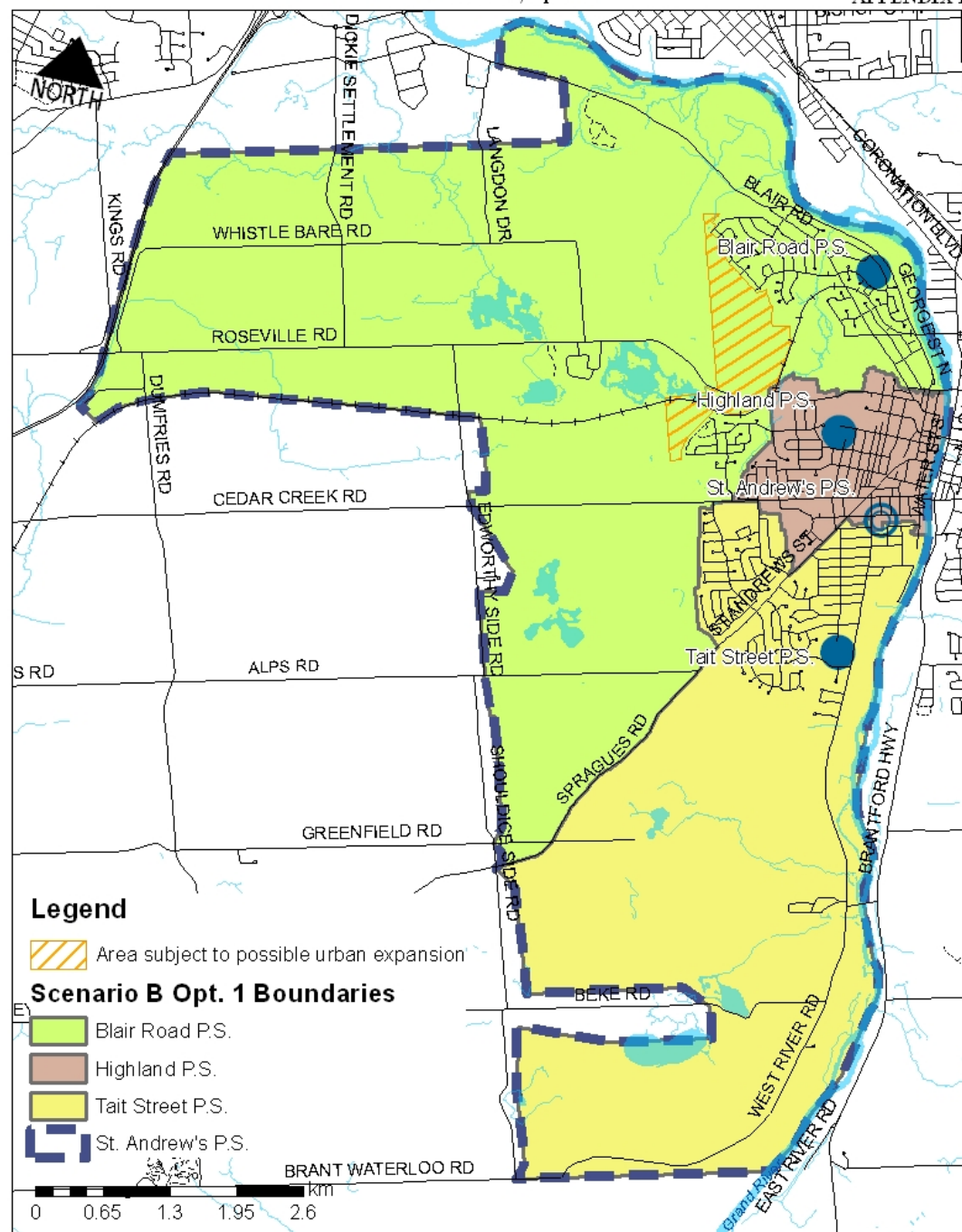
January 14, 2013



Waterloo Region  
District School Board

Scenario B, Option 1

APPENDIX B



## Scenario B, Option 1 (revised) Projected Enrolment

**Table 1: Scenario B, Option 1 with Revised Timing<sup>1</sup>**

School	Capacity	2013 <sup>2</sup>	2014	2015	2016	2017	2018
Blair Road P.S.	294	243	271	297	324	337	343
Dickson P.S.	161	88	0	0	0	0	0
Highland P.S.	464	542	512	489	473	448	508
St. Andrew's P.S.	401	426	415	372	382	400	346
Tait Street P.S.	507	331	417	456	481	492	505
<b>TOTAL</b>	<b>1666</b>	<b>1630</b>	<b>1615</b>	<b>1614</b>	<b>1660</b>	<b>1677</b>	<b>1702</b>

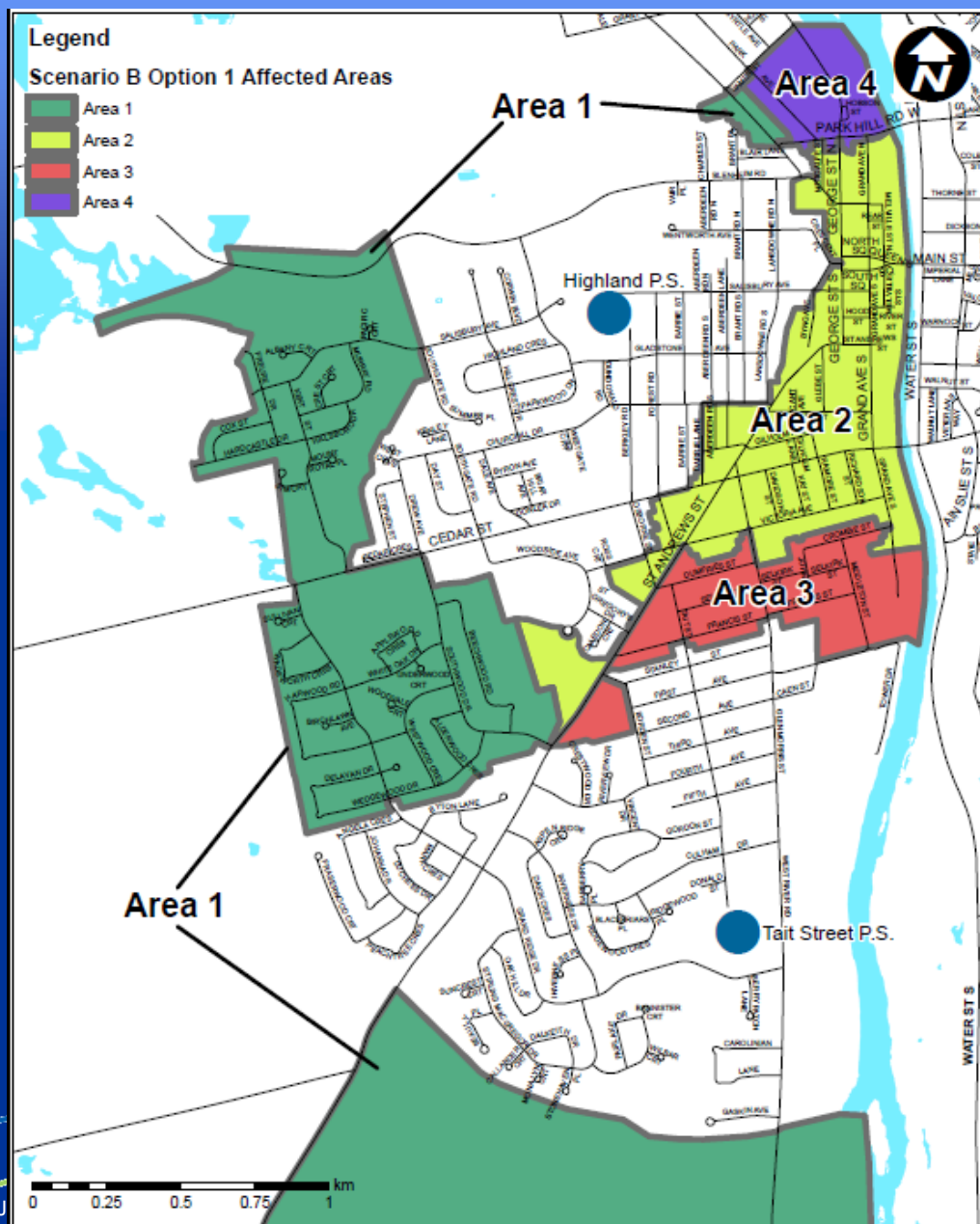
<sup>1</sup>Assumes all students will remain at current school given the choice and that all current Dickson P.S. students will attend Highland P.S. (grandfathering option)

<sup>2</sup> JK students have been included in enrolment at receiving schools



Waterloo Region  
District School Board

# APPENDIX II: Grandfathering – Regular Track Students

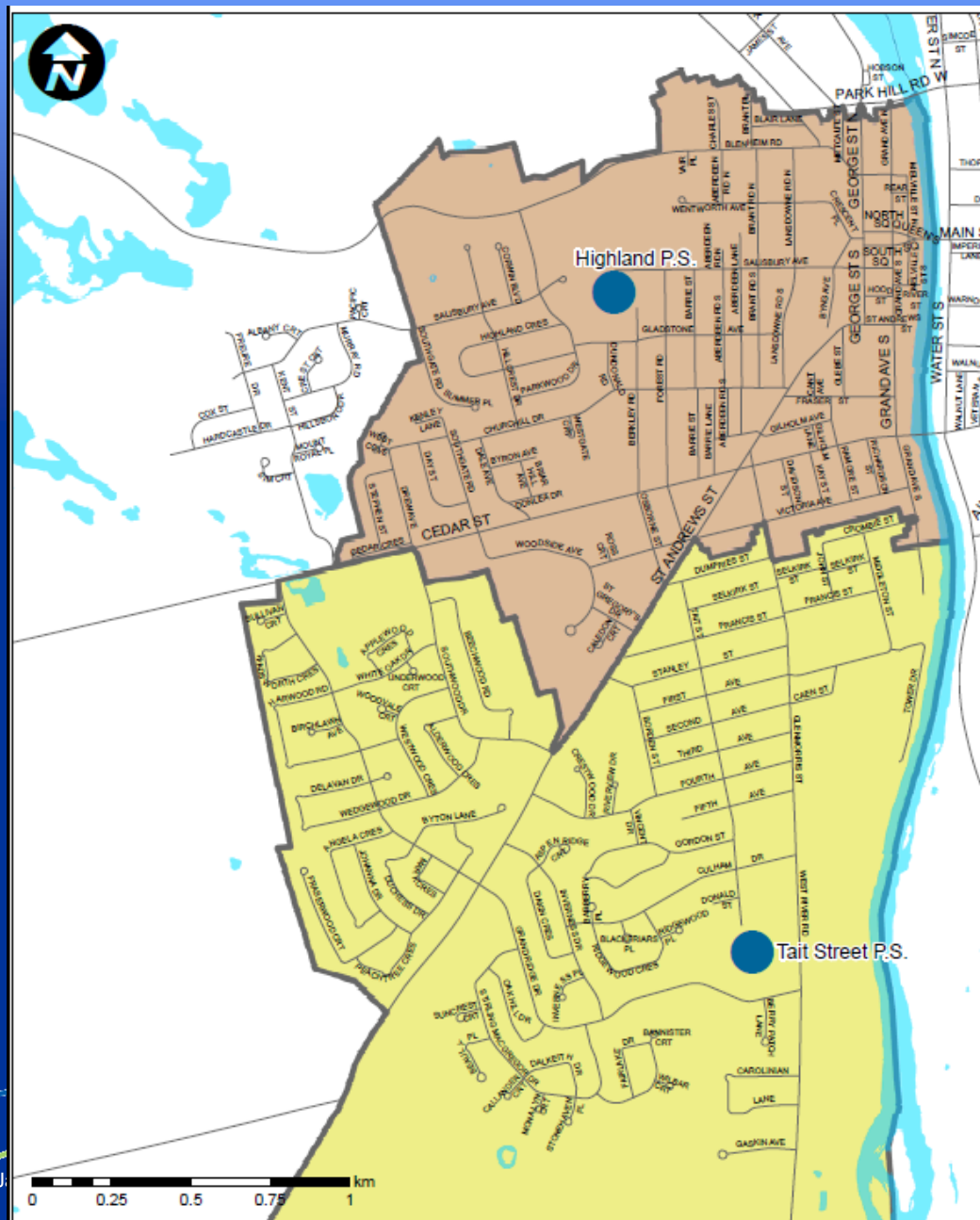


Year	Affected Area 1	Affected Area 2	Affected Area 3	Affected Area 4
2013/14	JK students attend school determined by Scenario B1 boundary	JK students attend Highland P.S.	JK students attend Tait Street P.S.	JK students attend Blair Road P.S.
	SE-6 students option to attend school determined by 2012/13 or Scenario B1 boundary	SE-5 students option to attend Dickson P.S. or Highland P.S.	SE-5 students option to attend Dickson P.S. or Tait Street P.S.	SE-5 students option to attend Dickson P.S. or Blair Road P.S.
2014/15	JK-5 students attend school determined by Scenario B1 boundary	JK-5 students attend Highland P.S.	JK-SK students attend Tait Street P.S.	JK-SK students attend Blair Road P.S.
	Gr. 6 students option to attend the school determined by 2012/13 or Scenario B1 boundary		Gr. 1-5 students have option to attend Tait Street P.S. or Highland P.S.	Gr. 1-5 students have option to attend Blair Road P.S. or Highland P.S.
	Gr. 6 students have the option to attend St. Andrew's P.S. or Tait Street P.S.		Gr. 6 students have the option to attend St. Andrew's P.S. or Blair Road P.S.	
2015/16			JK-1 students attend Tait Street P.S.	JK-1 students attend Blair Road P.S.
			Gr. 2-5 students have option to attend Tait Street P.S. or Highland P.S.	Gr. 2-5 students have option to attend Blair Road P.S. or Highland P.S.
2016/17	JK-6 students school determined by Scenario B1 boundary		JK-2 students attend Tait Street P.S.	JK-2 students attend Blair Road P.S.
			Gr. 3-5 students have option to attend Tait Street P.S. or Highland P.S.	Gr. 3-5 students have option to attend Blair Road P.S. or Highland P.S.
2017/18			JK-3 students attend Tait Street P.S.	JK-3 students attend Blair Road P.S.
			Gr. 4-5 students have option to attend Tait Street P.S. or Highland P.S.	Gr. 4-5 students have option to attend Blair Road P.S. or Highland P.S.
2018/19			JK-4 students attend Tait Street P.S.	JK-4 students attend Blair Road P.S.
			Gr. 5 students have option to attend Tait Street P.S. or Highland P.S.	Gr. 5 students have option to attend Blair Road P.S. or Highland P.S.

Transportation extension provided based on *Board Policy 4009 - Student Transportation* up to July 1, 2015. Options do not extend to unregistered siblings.



# APPENDIX III: Grandfathering – French Immersion Students



Year	PFI students (Area 1)	PFI Students (Area 2)	PFI Students (Area 3)
2013/14	Gr. 1 students attend Tait Street P.S.	Gr. 1-5 students attend Highland P.S.	Gr. 1 students apply as out of boundary
	Gr. 2-5 students attend Highland P.S.	Gr. 6-8 students attend St. Andrew's P.S.	Gr. 2-5 students attend Highland P.S.
2014/15	Gr. 1-2 students attend Tait Street P.S.	Gr. 1-5 students attend Highland P.S.	Gr. 1 students apply as out of boundary
	Gr. 3-5 students attend Highland P.S.	Gr. 6 students attend St. Andrew's P.S.	Gr. 3-5 students attend Highland P.S.
	Gr. 7-8 students attend St. Andrew's P.S.	Gr. 7-8 students attend St. Andrew's P.S.	Gr. 7-8 students attend St. Andrew's P.S.
2015/16	Gr. 1-3 students attend Tait Street P.S.	Gr. 1-5 students attend Highland P.S.	Gr. 1 students apply as out of boundary
	Gr. 4-5 students attend Highland P.S.	Gr. 6-8 students attend St. Andrew's P.S.	Gr. 4-5 students attend Highland P.S.
2016/17	Gr. 1-4 students attend Tait Street P.S.	Gr. 1-5 students attend Highland P.S.	Gr. 1 students apply as out of boundary
	Gr. 5 students attend Highland P.S.	Gr. 6-8 students attend St. Andrew's P.S.	Gr. 5 students attend Highland P.S.
2017/18	Gr. 1-5 students attend Tait Street P.S.	Gr. 1-5 students attend Highland P.S.	Gr. 1 students apply as out of boundary
		Gr. 6-8 students attend St. Andrew's P.S.	
2018/19	Gr. 1-6 students attend Tait Street P.S.	Gr. 1-6 students attend Highland P.S.	Gr. 1 students apply as out of boundary
		Gr. 7-8 students attend St. Andrew's P.S.	

Transportation extension provided based on Board Policy 4009 - Student Transportation up to July 1, 2015. Refer to Administrative Procedure 1000 - Partial French Immersion for siblings.

## Other Options

- **Alternative timing of Dickson P.S. closure**
  - Revised solution delays closure by 1 school year
  - Further delay could result in enrolment decline and programming issues
- **ARC Scenario # 11**
  - Did not meet review objectives
  - Does not address over-crowding issues at Highland P.S.
  - Dickson P.S. could not accommodate the additional students
  - Small enrolments at 3 schools not addressed



## **Tait Street P.S. Addition**

- **6 classroom addition proposed – est. \$2.7M**
  - 4 FDK classrooms (\$1.8M)
  - 2 Regular classrooms (\$0.9M)
- **Approval requirements**
  - No demolition permit for 204 West River Rd until there is an approved site plan from City
  - No zoning by-law amendment required for a school board use
  - Must complete a detailed vegetation management plan and transportation plan
  - Must conduct a neighbourhood meeting prior to site plan approval



# Student Movement

**Table 4: Movement of current students in 2014 under Scenario B1 (by gr. in 14/15)<sup>1</sup>**

<b>Movement</b>	<b>Gr. 1</b>	<b>Gr. 2</b>	<b>Gr. 3</b>	<b>Gr. 4</b>	<b>Gr. 5</b>	<b>Total</b>
From Highland P.S. to Blair Road P.S. (Areas E & G2)	8	7	3	6	1	25
From Highland P.S. to Tait Street P.S. (Area J)	25	31	13	17	16	102
<b><i>Total Leaving Highland P.S.<sup>2</sup></i></b>	<b>33</b>	<b>38</b>	<b>16</b>	<b>23</b>	<b>17</b>	<b>127</b>
From Dickson P.S. to Highland P.S. (All Areas)	19	17	16	15	16	83
<b><i>Total Entering Highland P.S.</i></b>	<b>19</b>	<b>17</b>	<b>16</b>	<b>15</b>	<b>16</b>	<b>83</b>
From Blair Road P.S. to Tait Street P.S. (Area D2)	1	1	4	1	1	8
<b><i>Total Leaving Blair Road P.S.</i></b>	<b>1</b>	<b>1</b>	<b>4</b>	<b>1</b>	<b>1</b>	<b>8</b>
<b>Total Student Moves</b>	<b>53</b>	<b>56</b>	<b>36</b>	<b>39</b>	<b>34</b>	<b>218</b>

<sup>1</sup> Using student position data as of November 1, 2012

<sup>2</sup> Excludes students with option to remain for Partial French Immersion



Waterloo Region  
District School Board

## **10 Reasons to Approve Scenario B, Option 1 (revised)?**

- 1. Provides time-sensitive solution**
- 2. Addresses 5/6 of the ARC's recommendations**
- 3. Moves fewer pupils out of current schools as compared to ARC Scenario 23**
- 4. Provides an additional PFI site in Cambridge**
- 5. Leverages FDK funding for Tait Street P.S. addition and improvements**
- 6. Meets MOE directions to deliver services more efficiently**
- 7. Saves infrastructure costs and capital**
- 8. Provides more equitable learning spaces for all students in review area**
- 9. Improves Board's accessibility objectives**
- 10. Meets the overall objectives as set out by the ARC**

## **Recommendations**

- 1. Close Dickson P.S. at the end of the 2013/14 school year**
- 2. Construct a 6 classroom addition at Tait Street P.S. to be completed for September 2014**
- 3. Fund balance of the Tait Street P.S. addition out of Proceeds of Disposition reserve**
- 4. Implementation of Scenario B, Option 1 (revised) effective September 2013**
- 5. Boundary changes for Blair Road, Highland and Tait Street Public Schools effective September 2013**
- 6. Grandfathering**
- 7. Transportation for grandfathered students (2 years)**
- 8. Add Gr. 6 to Highland P.S. in 2018**
- 9. Gr. 6 boundary**