



Waterloo Region
District School Board

Preston Area Elementary Schools

Boundary Study

Working Group Meeting #1

Jan. 13, 2009

Parkway Public School



1. Welcome/Introductions
2. Background/Why a Boundary Study
3. Role of the Boundary Study Working Group
4. Process
 - Issues
 - Objectives
 - Scenarios
5. Future Meeting Dates



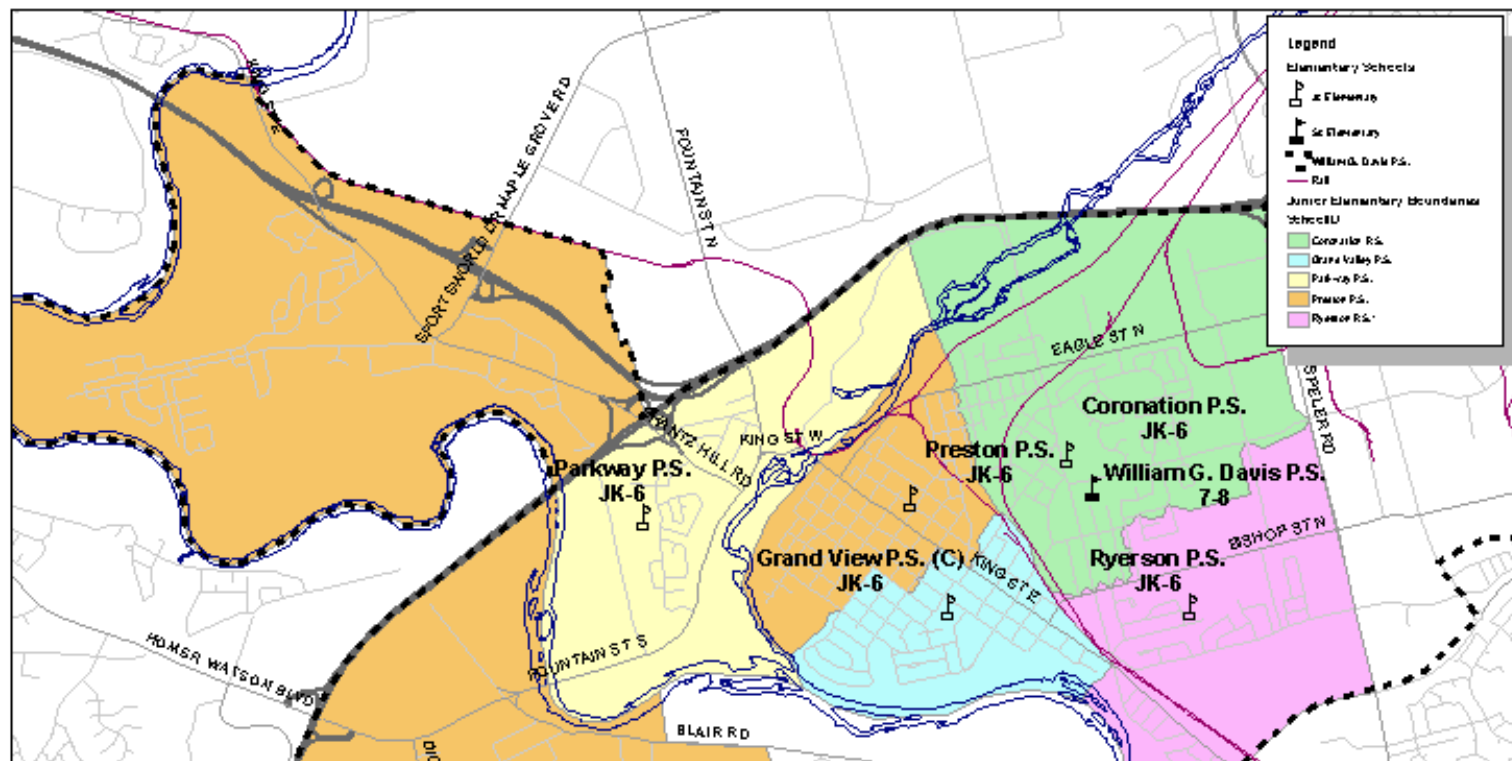
“The Waterloo Region District School Board considers a School Boundary Study when considering a change to one or more school catchment areas.”

There can be a number of reasons for a study:

- opening of a new school and establishing the new boundary and adjusting the boundaries of the existing schools in the area;
- changing the grade structure of an elementary school – this would include changing an elementary school from a junior kindergarten (JK) to grade 6 format to a composite school with JK to grade 8 format.
- balancing enrolment and facilities - one school may have too many students for its capacity and another may have too few;
- after municipalities approve new residential development, the area needs to be assigned to a school where capacity exists.



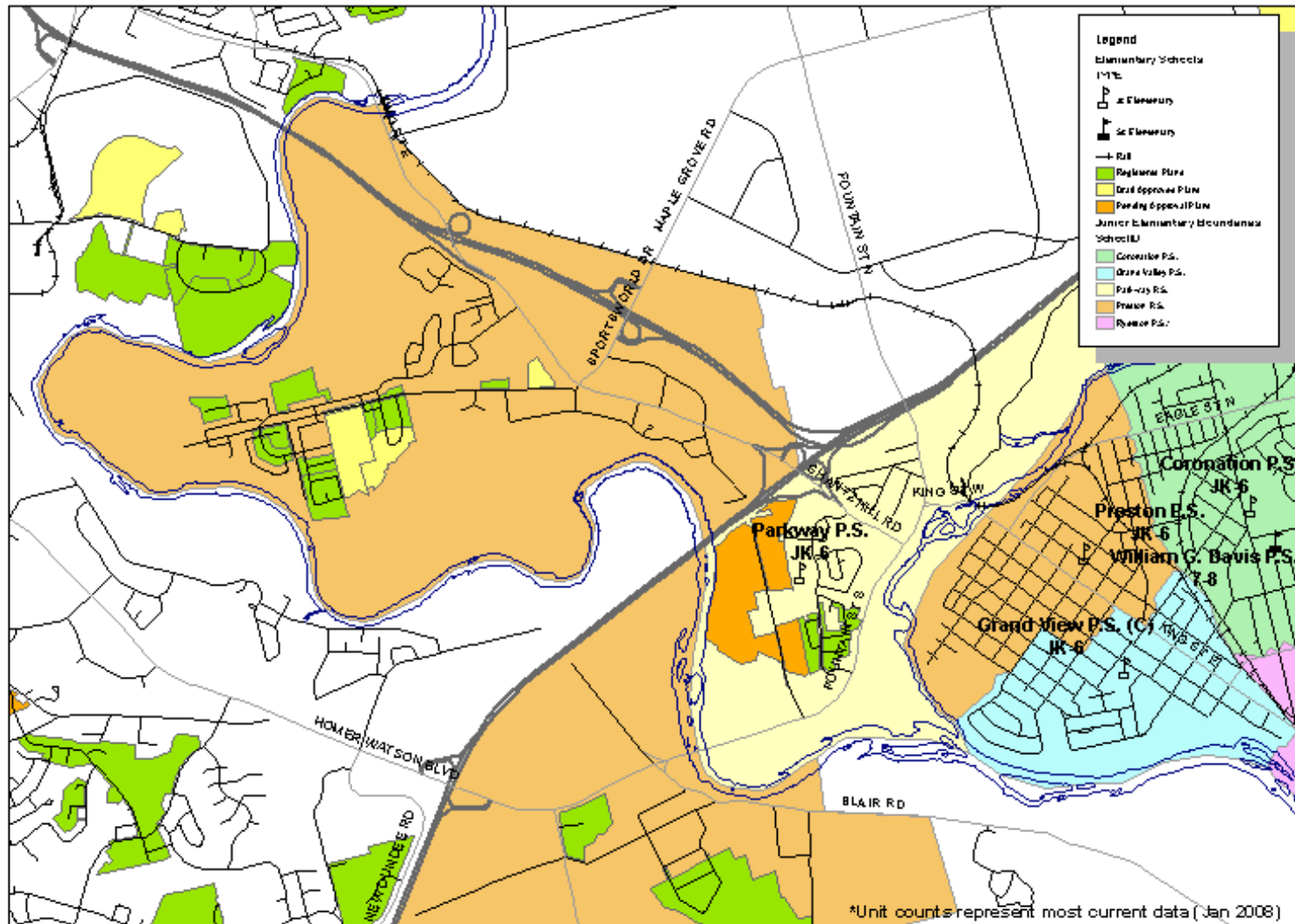
Preston Area Boundary Study

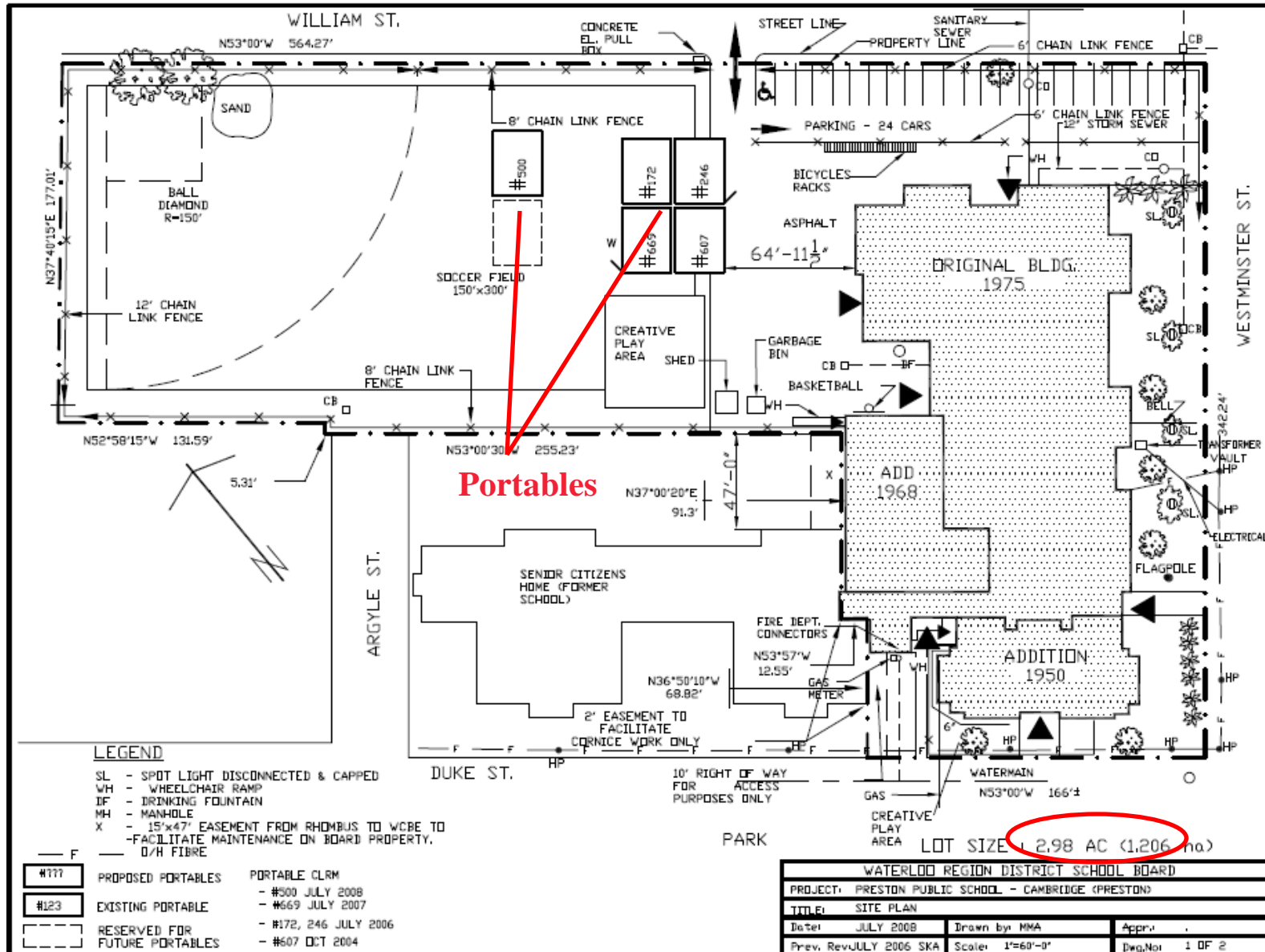


School	Grades	JK	SK	one	two	three	four	five	six	seven	eight	Total Students	Total FTE	Capacity	Capacity w/ppk	Portables
Coronation P.S.	JK-6	52	56	53	55	54	58	47	62	-	-	437	383	357	357	2
Grand View P.S. (C)	JK-6	8	16	23	31	25	22	22	20	-	-	167	155	216	216	0
Parkway P.S.	JK-6	23	24	24	25	29	28	31	20	-	-	204	180.5	236	236	1
Preston P.S.	JK-6	49	57	46	41	53	51	50	49	-	-	396	343	259	259	5
Ryerson P.S.**	JK-6	11	11	12	5	12	17	13	18	-	-	99	88	135	135	2
William G. Davis P.S.	7-8	-	-	-	-	-	-	-	-	179	192	371	371	446	446	0
Totals		143	164	158	157	173	176	163	169	179	192	1674	1520.5	1649	1649	10



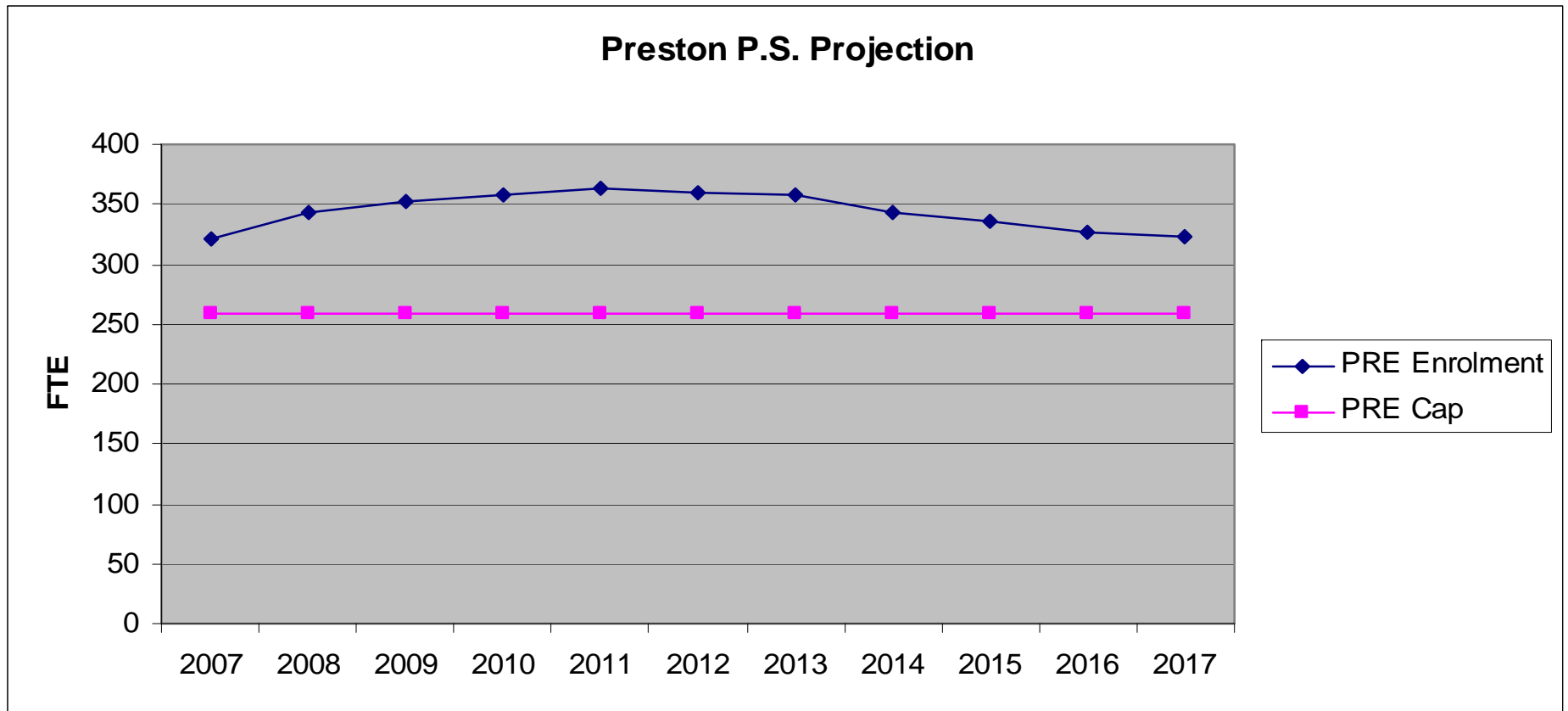
Preston P.S. Boundary Study: Development Outlook*





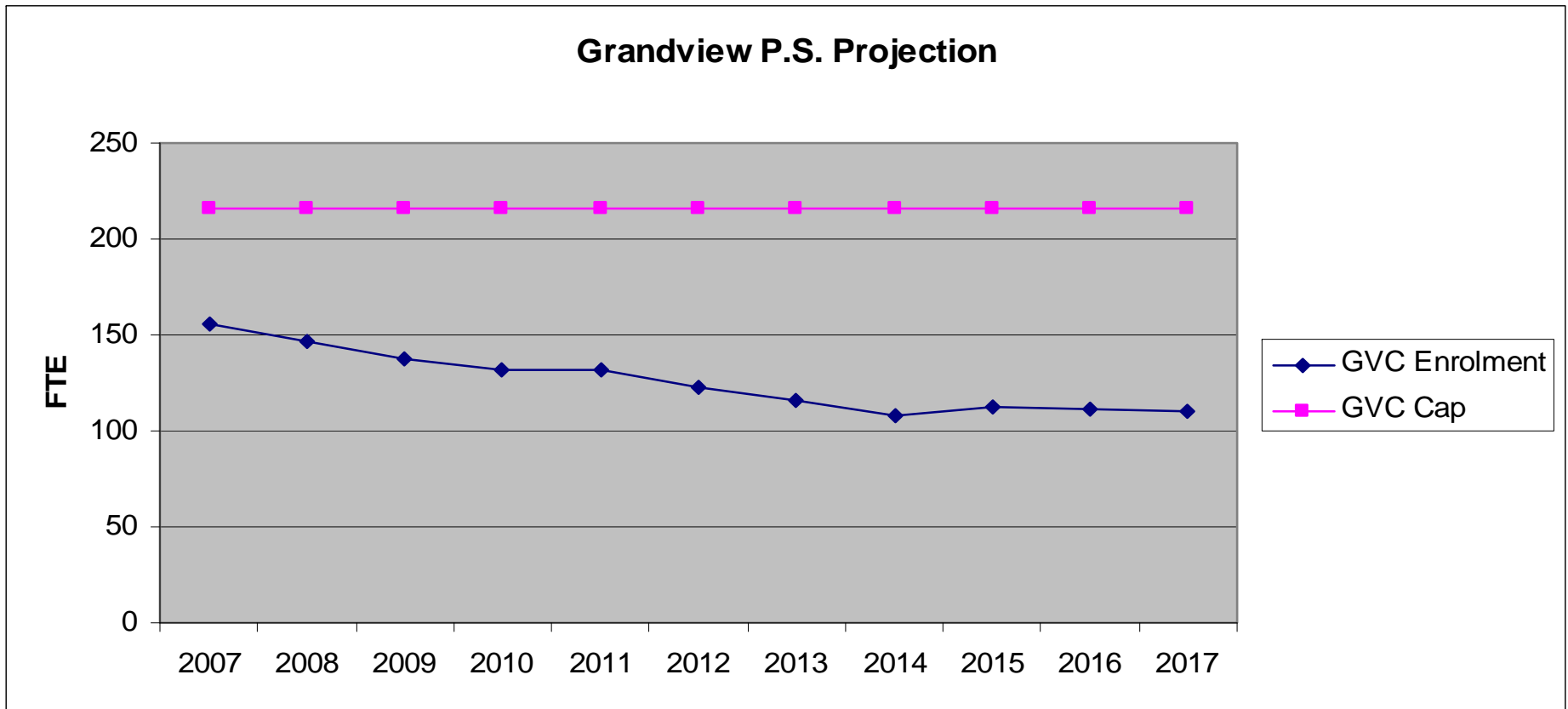


Status Quo Enrolment Projections



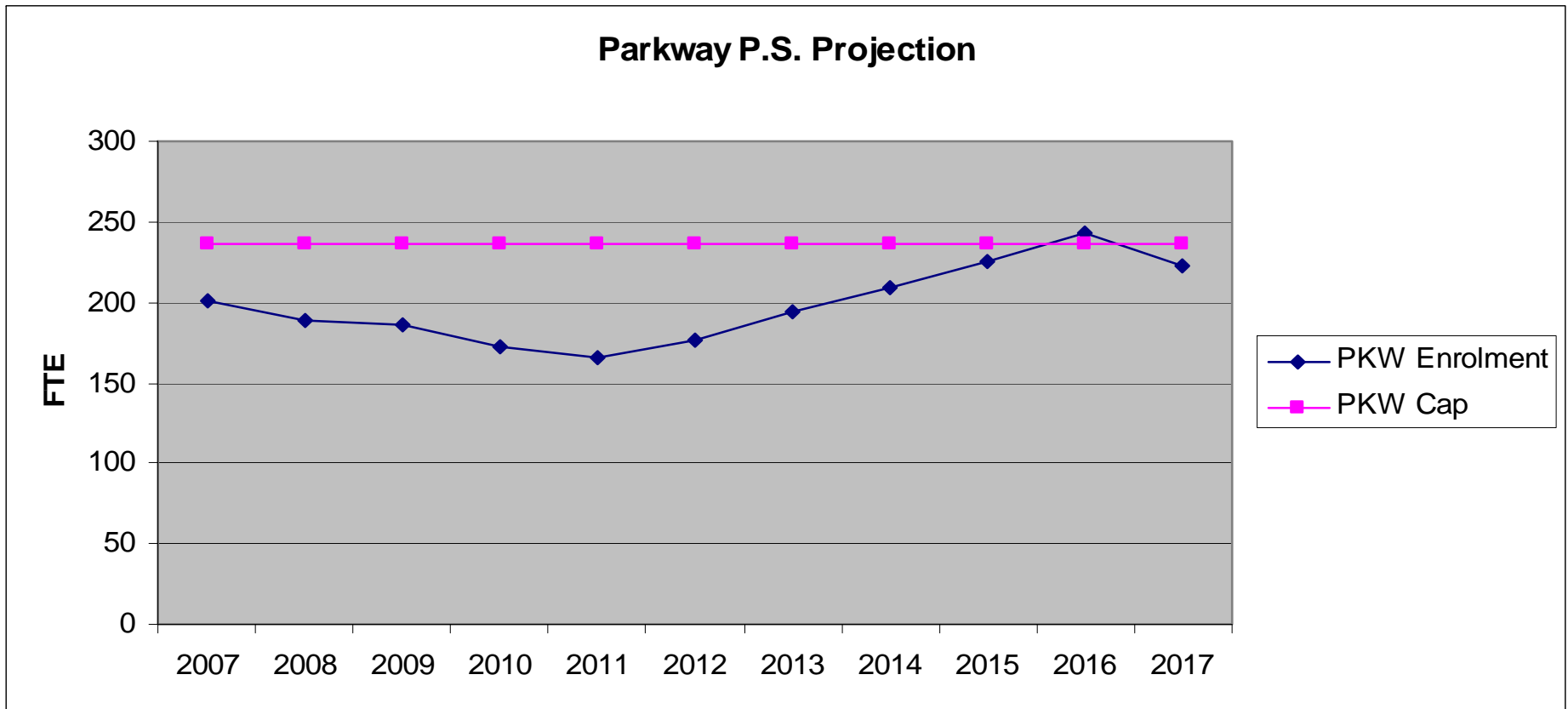


Status Quo Enrolment Projections



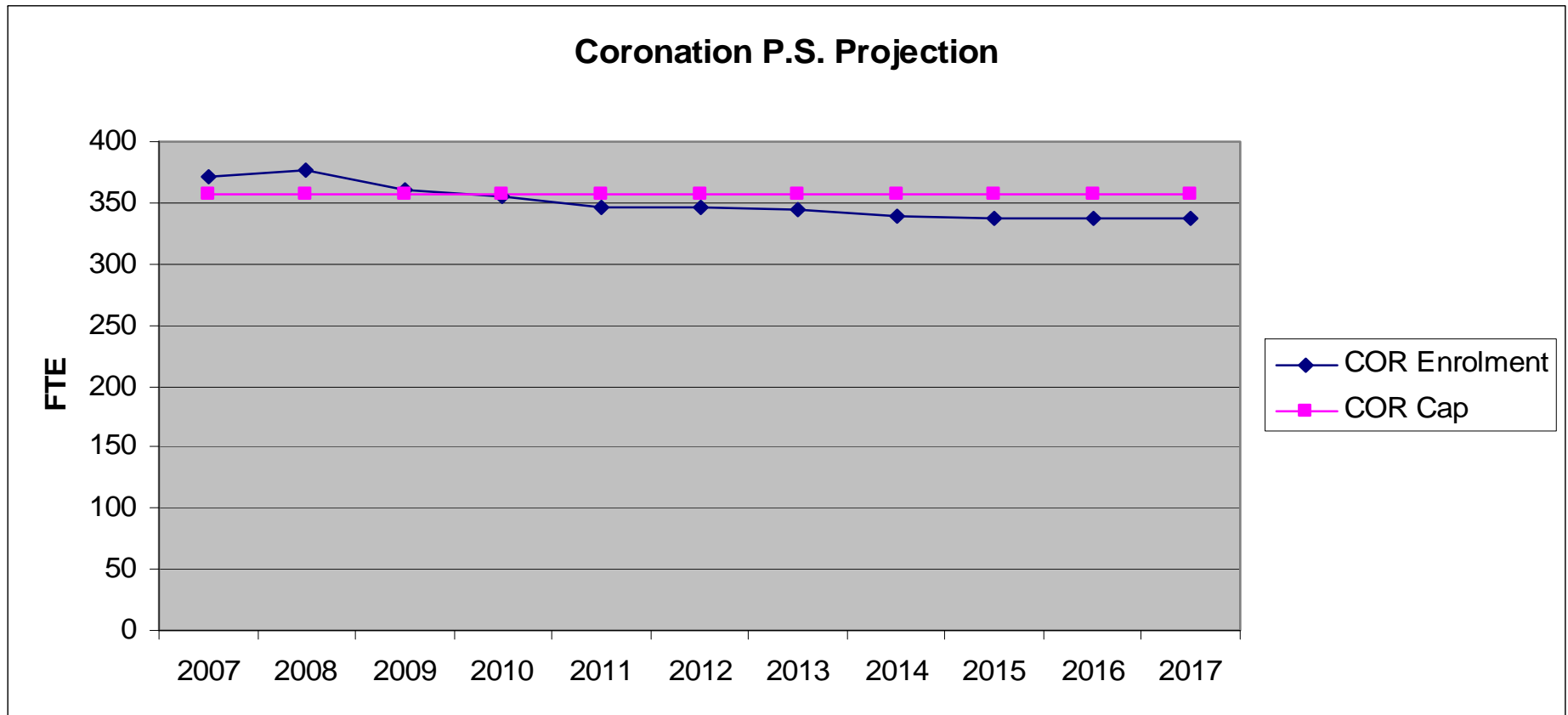


Status Quo Enrolment Projections





Status Quo Enrolment Projections



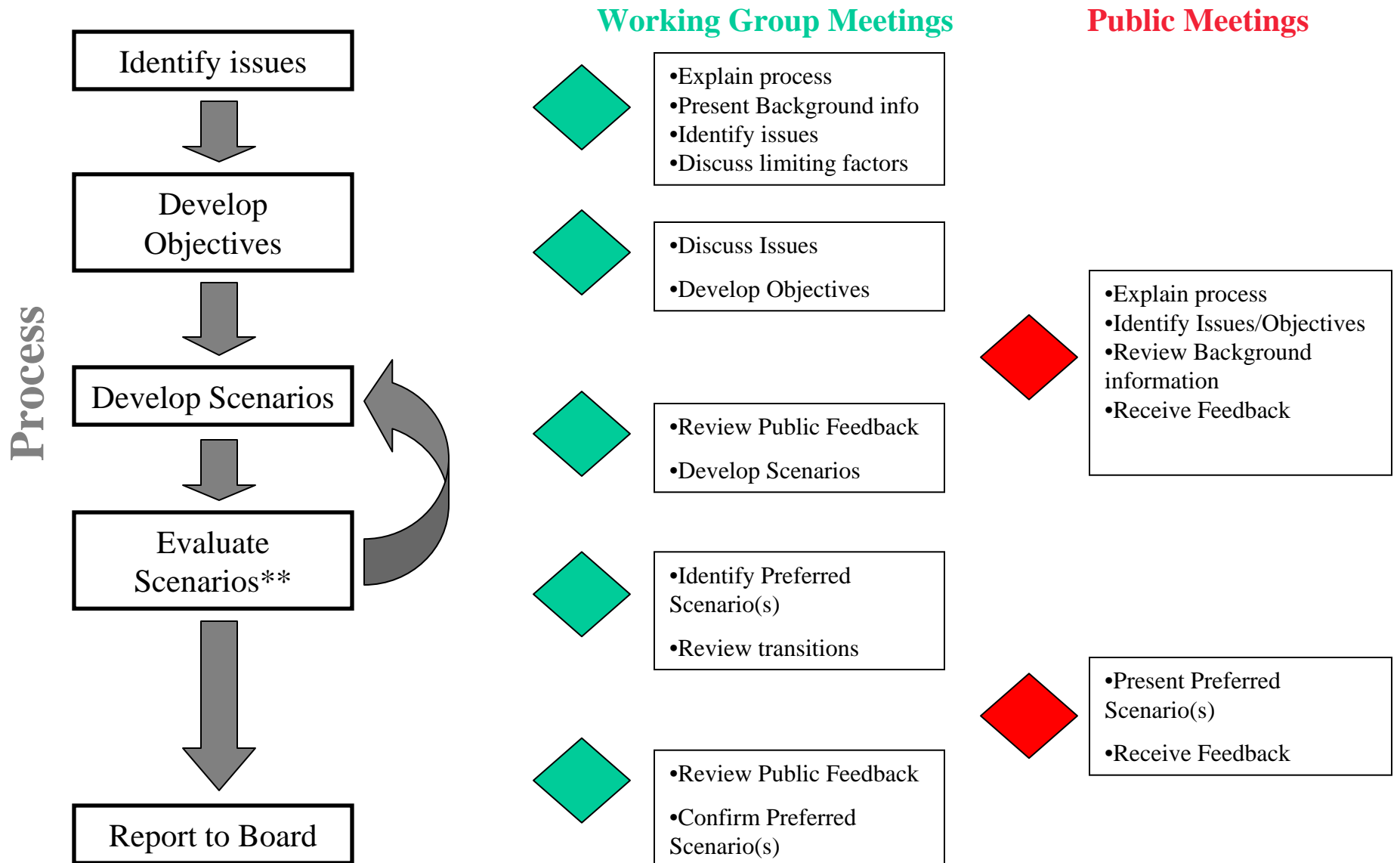


Role of the Working Group

- Bring forth and discuss the issues and opportunities of the individual school communities
- Provide input and develop the objectives of the Boundary Study
- Develop and evaluate student accommodation scenarios against the Boundary Study objectives
- Act as liason between the working group and your school communities



Boundary Study Process



**Scenario development and evaluation may go through multiple iterations as scenarios are evaluated , and new ideas result from the evaluation.



- Website: www.wrdsb.on.ca
 - » Boundary Studies and Accommodation Reviews
 - » Preston Area Elementary Schools Boundary Study
- E-mail: boundaryfeedback@wrdsb.on.ca
- Phone: 519-570-0003 ext. 4419