

WEST GALT

Elementary Schools Pupil Accommodation Review

Recommendations

November 12, 2012

Presentation to the Committee of the Whole



November 12, 2012

Waterloo Region
District School Board

2011



2012



Existing Situation

Table 1

School	Capacity (on-the-ground)	Total Enrolment	JK-6	JK-5	6-8	Spec. Ed.	FI	FDK
Blair Road P.S.	294	222	•			•		•
Dickson P.S.	161	114		•				•
Highland P.S.	461	565		•			•	•
St. Andrew's P.S.	401	445			•		•	
Tait Street P.S.	348	303	•					
TOTAL	1665	1649						



West Galt ARC Recommendations

1. To close Dickson Public School
2. To construct a new JK-6 facility
3. To modify the boundary for Blair Road Public School
4. To modify the boundary and add Gr. 6 to Highland Public School
5. To modify the boundary for Tait Street Public School
6. To offer only Gr. 7-8 at St Andrew's Public School



Administrative Accommodation Options

Scenario A: Addition and PFI at Blair Road P.S.

Scenario B: Addition and PFI at Tait Street P.S.

Scenario C: 7-12 school at SSS site

Scenario D: JK-6/9-12 school at SSS site

Scenario E: JK-12 school at SSS site

Scenario B, Option 1

1. Close Dickson P.S.
2. Add additional classrooms to Tait Street P.S.
3. Modify the boundary for Blair Road P.S.
4. Modify the boundary and add Gr. 6 to Highland P.S.
5. Modify the boundary for Tait Street P.S.
6. Offer only Gr. 7-8 at St. Andrew's P.S.
7. Offer Partial French Immersion at Tait Street P.S.



Scenario B, Option 1 Boundary

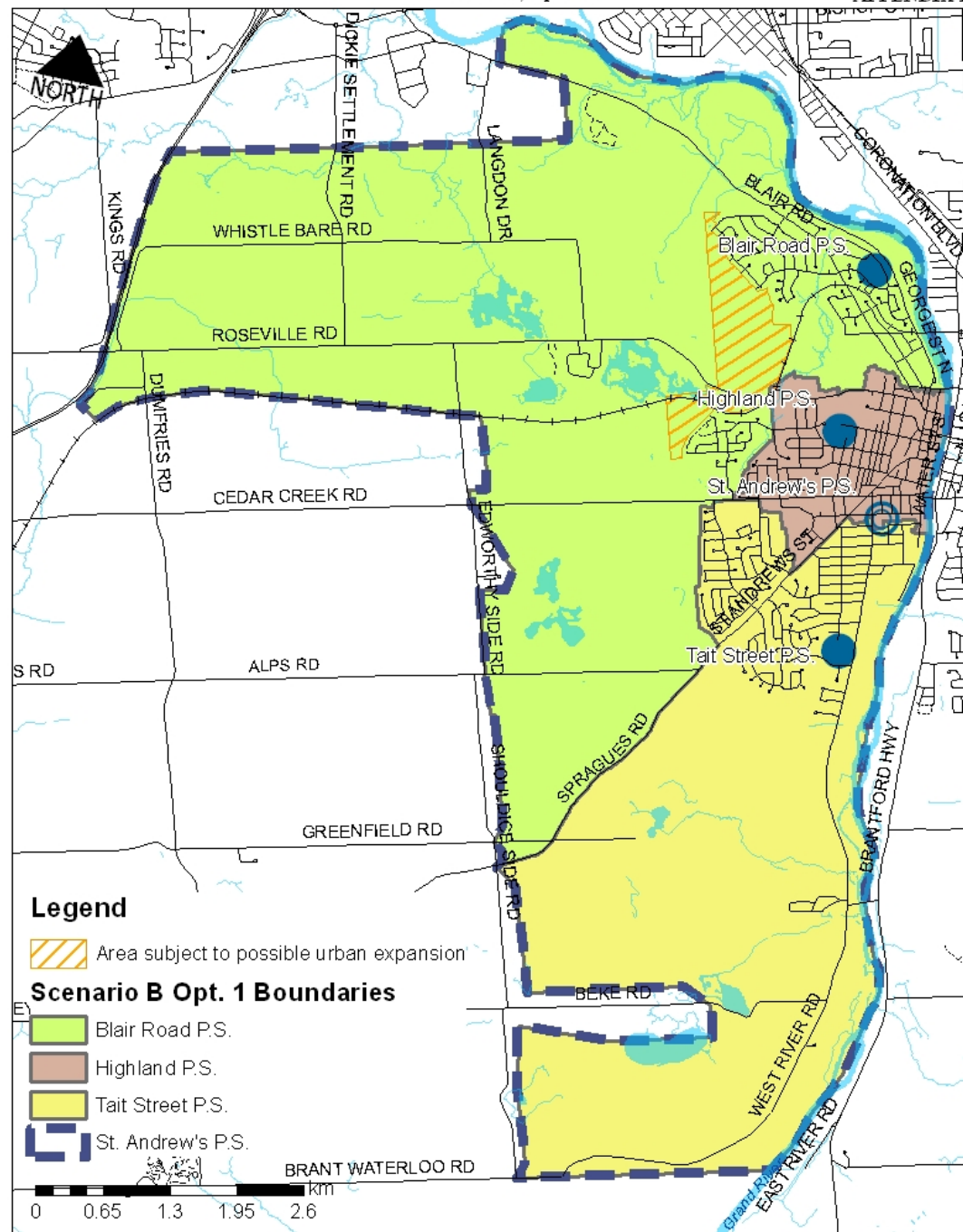
November 12, 2012



Waterloo Region
District School Board

Scenario B, Option 1

APPENDIX B



Scenario B, Option 1 Projected Enrolment

Table 3

School	Capacity	2013	2014	2015	2016	2017	2018
Blair Road P.S.	294	259	282	297	324	337	343
Highland P.S.	464	469	456	440	503	511	506
St. Andrew's P.S.	401	430	377	370	308	314	346
Tait Street P.S.	507	472	500	507	525	513	507
TOTAL	1666	1630	1615	1614	1660	1678	1702

Implementation and Timing

Scenario B	2012/13	2013/14	2014/15	2015/16	2016/17
Recommendation #1: Close Dickson P.S.	June 27, 2013 Last day of classes	September 2013 - June 2020 Option to attend Highland P.S. instead of Tait Street P.S. or Blair Road P.S. (Areas K2, M2 & N2)			
Recommendation #2: Construct an addition to Tait Street P.S.	August 2013 Construction of 6 classroom addition complete	September 2013 Implementation of Full-Day Kindergarten program			
Recommendation #3: Modify Blair Road P.S. Boundary		September 2013 Areas E & G2 to attend Blair Road PS September – June Gr. 6 option to stay at Blair Road P.S.			
Recommendation #4: Modify Highland P.S. Boundary and add Gr. 6		September 2013 Areas K1, L, M1, N1 & N3 attend Highland PS			September 2016 Gr. 6 classes begin
Recommendation #5: Modify Tait Street P.S. Boundary		September 2013 Areas D2, J, M2 & N2 attend Tait Street PS			
Recommendation #6: Offer only Gr. 7-8 at St. Andrew's P.S.		September – June Gr. 6 option to attend St. Andrew's PS (from Highland PS & Dickson PS)		June 2016 Last day of Gr. 6 classes	September 2016 Gr. 7 & 8 only at St. Andrew's PS
Recommendation #7: Offer Partial French Immersion at Tait Street P.S.		September – June Grades 1 – 3 PFI Gr. 4-5 option to stay at Highland PS (+ siblings)	September – June Grades 1 – 4 PFI Gr. 5 option to stay at Highland PS (+ siblings)	September – June Grades 1 – 5 PFI	September – June Grades 1 – 6 PFI

Tait Street P.S. addition



Tait Street P.S. addition

Room Type	Benchmark Funding Allocation			
	4 Rooms	3 Rooms	2 Rooms	1 Room
FDK (1200 ft ²)	\$1,863,788	\$1,397,841	\$931,894	\$465,947
Regular (750 ft ²)	\$1,745,620	\$1,309,215	\$872,810	\$436,405

	FDK Capital Grants	Proceeds of Disposition	Total Project Cost
Funding Possibility #1	\$1,397,841	\$1,338,757	\$2,736,598
Funding Possibility #2	\$931,894	\$1,804,704	\$2,736,598

Partial French Immersion

Table 4: Count of 2012/13 Partial French Immersion Students

Grade in 2012/13	Gr. 1	Gr. 2	Gr. 3	Gr. 4	Total
Grade in 2013/14	Gr. 2	Gr. 3	Gr. 4	Gr. 5	
New Highland P.S. Boundary	23	13	17	21	74
Out of Boundary (north)	18	6	10	11	45
Highland P.S. Total	41	19	27	32	119
New Tait Street P.S. Boundary	10	13	14	10	47
Out of Boundary (south)	4	6	6	1	17
Tait Street P.S. Total	14	19	20	11	64



Waterloo Region
District School Board

33 Gr. 2-3 Students at Tait Street P.S. in 2013/14

Partial French Immersion

2012/13 HIG students	JK	SK	Gr. 1	Gr. 2	Total
OOB North (REG)	1	4	2	1	8
OOB North (PFI)			11	1	12
OOB South (REG)	3	6			9
OOB South (PFI)			4	6	10

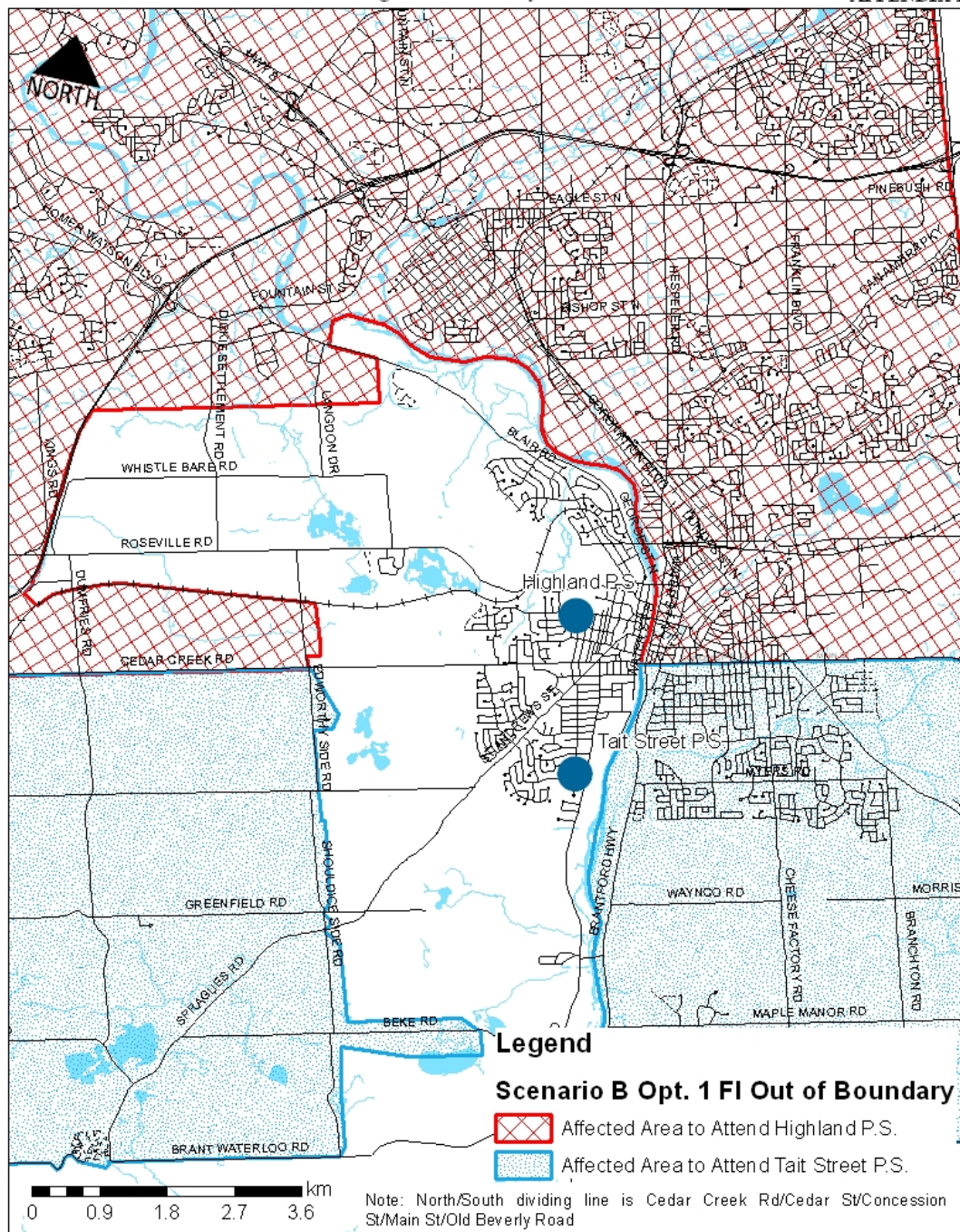


November 12, 2012

Waterloo Region
District School Board

French Immersion Boundaries for Existing Out of Boundary Students

APPENDIX E



Affected Students by Area

Area	JK	SK	Gr. 1	Gr. 2	Gr. 3	Gr. 4	Gr. 5	Gr. 6	Total
D2	1	1	4	1	1	0			8
E & G2	7	6	3	5	0	3			24
J	23	28	18	23	14	12			118
K2	0	0	0	0	0	0			0
K1, L, M1, N1 & N3	13	14	8	11	11	11			68
M2 & N2	6	3	8	3	5	3			28
OOB South	1	3	4	6					14
Total	51	55	45	49	31	29			260

Financial Implications

School	Est. Capacity (pupil places)			Est. Gross Floor Area (m ²)		
	Status Quo	Scenario 23	Scenario B1	Status Quo	Scenario 23	Scenario B1
Blair Road P.S.	294	294	294	2620	2620	2620
Dickson P.S.	161	0	0	1512		
Highland P.S.	464	464	464	3525	3525	3525
St. Andrew's P.S.	401	401	401	4880	4880	4880
Tait Street P.S.	406	406	507	3360	3360	4025
Beechwood Rd		350			3322	
Total	1,726	1,915	1,666	15,655	17,707	15,050

Capacity reduced by 60 pupil places

GFA reduced by 605 m²



Waterloo Region
District School Board

Financial Implications

Staffing (staffing allocations estimated using projected enrolment for 2016/17)

School	Principal/VP			Custodian			Secretary			Enrolment		
	Status Quo	Scenario 23	Scenario B1	Status Quo	Scenario 23	Scenario B1	Status Quo	Scenario 23	Scenario B1	Status Quo	Scenario 23	Scenario B1
Blair Road P.S.	1.0	1.0	1.0	1.6	1.6	1.6	0.8	0.8	1.0	626	240	324
Dickson P.S.	1.0			1.0			0.4			118		
Highland P.S.	1.5	1.5	1.5	3.0	3.0	3.0	1.8	1.6	1.6	582	505	503
St. Andrew's P.S.	2.0	1.5	1.5	1.75	1.75	1.75	1.2	1.0	1.0	407	317	308
Tait Street P.S.	1.0	1.0	1.5	3.0	3.0	3.0	1.0	1.0	1.6	291	297	525
Beechwood Rd		1.0			1.75			1.0			314	
Total	6.5	6.0	5.5	10.35	11.1	9.35	5.2	5.4	5.2	1660	1660	1660

Reduction of 1
Principal/VP

Reduction of 1
Custodian

No net change



Waterloo Region
District School Board

Financial Implications

Maintenance/Renewal (Renewal Needs identified in Fall 2011)

School	5 Yr. Renewal Needs			FDK (\$000,000)			Other (\$000,000)			Total (\$000,000)		
	Status Quo	Scenario 23	Scenario BI	Status Quo	Scenario 23	Scenario BI	Status Quo	Scenario 23	Scenario BI	Status Quo	Scenario 23	Scenario BI
BLR	\$0.7M	\$0.7M	\$0.7M							\$0.7M	\$0.7M	\$0.7M
DKS	\$1.3M									\$1.3M		
HIG	\$1.7M	\$1.7M	\$1.7M							\$1.7M	\$1.7M	\$1.7M
STA	\$1.7M	\$1.7M	\$1.7M							\$1.7M	\$1.7M	\$1.7M
TAI	\$2.1M	\$2.1M	\$2.1M	\$0.9M	\$0.9M	\$1.9M			\$0.9M	\$3.0M	\$3.0M	\$4.9M
NEW								\$6.5M			6.5	
Total	\$7.5M	\$6.1M	\$6.1M	\$0.9M	\$0.9M	\$1.9M		\$6.5M		\$8.4M	\$13.6M	\$8.9M

Net difference = \$491,000

Recommendations

1. Close Dickson P.S.
2. Addition at Tait Street P.S.
3. Cost of addition at Tait Street P.S.
4. Implementation of Scenario B1
5. Boundaries for Scenario B1
6. Grandfathering
7. Partial French Immersion boundary
8. Grade 6 at Highland P.S.
9. Highland P.S. boundary with Gr. 6