

East Kitchener-Waterloo

Elementary Schools Pupil Accommodation Review

Accommodation Review Committee Meeting #8

March 9, 2010

Margaret Avenue P.S. Library

4:30 – 6:00 pm



Waterloo Region
District School Board

Agenda

1. Welcome
2. Meeting #7 – Draft Minutes Approval
3. Review Objectives
 - Revised objectives
4. Scenario Costing Discussion
5. Public Meeting #3
 - Scenarios to bring forward
6. Roundtable
7. Future Meeting Dates
 - Public Meeting #3 Open House, March 23, 2010 @ Lexington P.S. from 7-9 pm



Revised Review Objectives

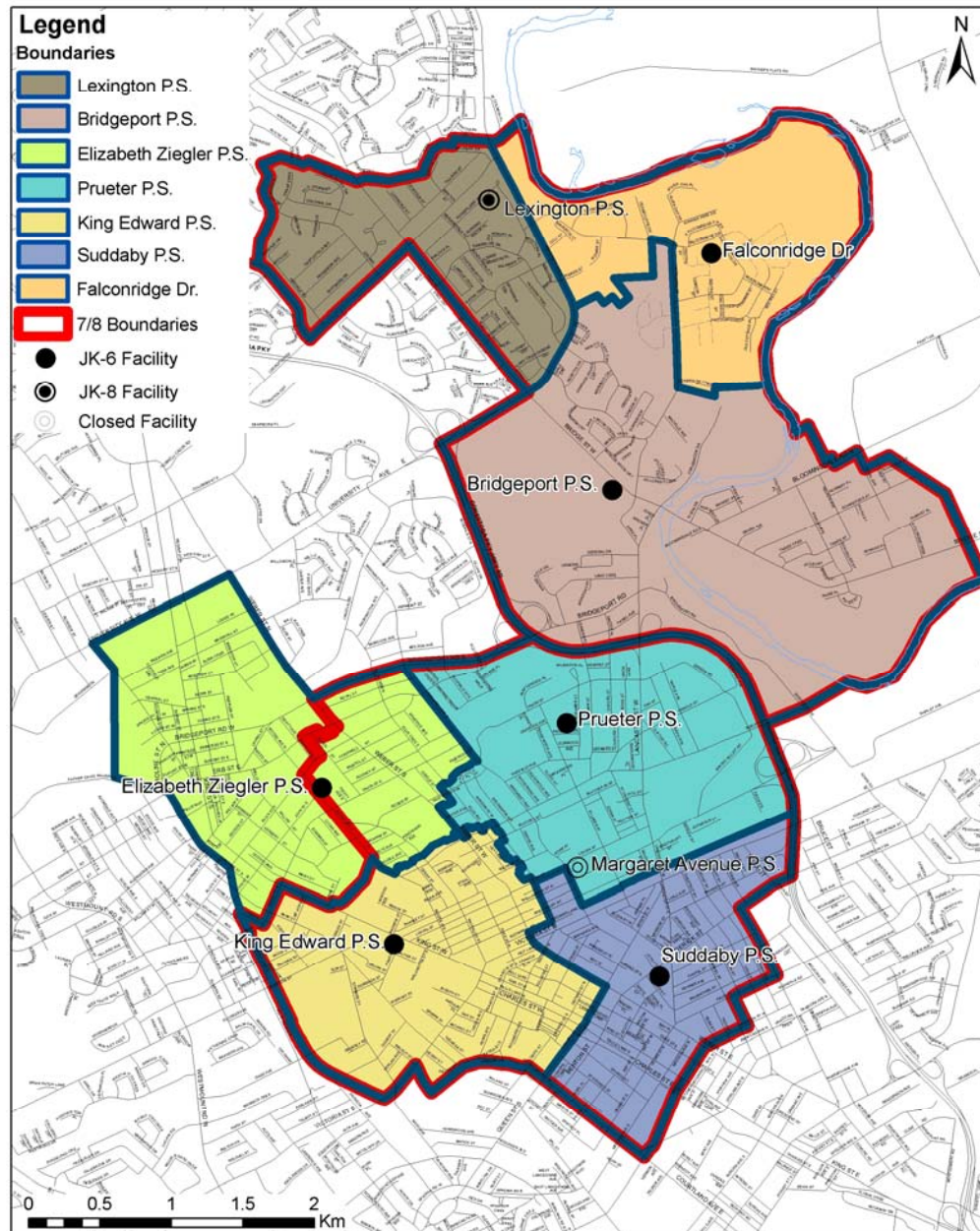
- To determine long-term boundaries for schools in the Review area, which will include:
 - a permanent solution for Lexington P.S.
 - determine need to keep/utilize the 410 Falconridge Drive, Kitchener property
- To determine viability of a JK-8 school in the Review area
- To have regard for community schools:
 - which recognize the relationship/identity of community to local elementary school
 - which minimize transportation costs in the long-term
- To support optimal use of facilities, capital and operating costs.
 - Consider priorities for physical accessibility of facilities by the Accessibility Committee
- To provide current and future students in the review area with equitable program opportunities to ensure their success by having regard for policies, directions or statements of the Ministry of Education and the WRDSB:
 - the Good Schools Standing Committee guiding principles on school size and configuration
 - distribution and accessibility of Special Education, French Immersion and English as a Second Language (ESL) programs.
 - plans with respect to curriculum and program changes (e.g. Early Learning Program, class sizes, etc.)
- To address student transitions where changes are proposed

Scenario 11 (NEW)

New JK-8 at Lexington, New JK-6 at Falconridge Dr, Margaret Ave gets all of SUD and KED

East KW Accommodation Review

Scenario 11



School	JK-6	JK-8	7-8	Areas
Bridgeport	•			G,H,J,K,L
Elizabeth Ziegler	•			M,N,O
King Edward	•			T,U,V,W
Lexington		•		A,B,C,D (7/8 add) E,F,G,H, J,K,L
Margaret Ave			•	P,Q,R,S, T,U,V,X, Y, V, Z
Prueter	•			P,Q,R,S
Suddaby	•			X,Y,Z
Falconridge Dr	•			E,F



Scenario 11 (NEW)

New JK-8 at Lexington, New JK-6 at Falconridge Dr, Margaret Ave gets all of SUD and KED

Facilities		Program					Draft Enrolment Projections (Total Students by Year)		
School	OTG Capacity	JK-6	JK-8	7-8	FI	SpecEd	2013	2016	2019
Bridgeport	471	•					394	434	421
Elizabeth Ziegler	405	•			•	•	360	344	330
King Edward	357	•				•	341	336	321
Lexington	500		•				472	484	518
Margaret Avenue	435			•		•	226	232	233
Prueter	346	•				•	212	231	236
Suddaby	493	•			•		414	415	420
Falconridge Dr	375	•					266	345	335
TOTAL	3382	6	1	1	2	4	2685	2821	2814

School	2013		2016		2019	
	JK-6	7-8	JK-6	7-8	JK-6	7-8
Lexington	263	209	267	217	284	234
Margaret Avenue		226		232		233

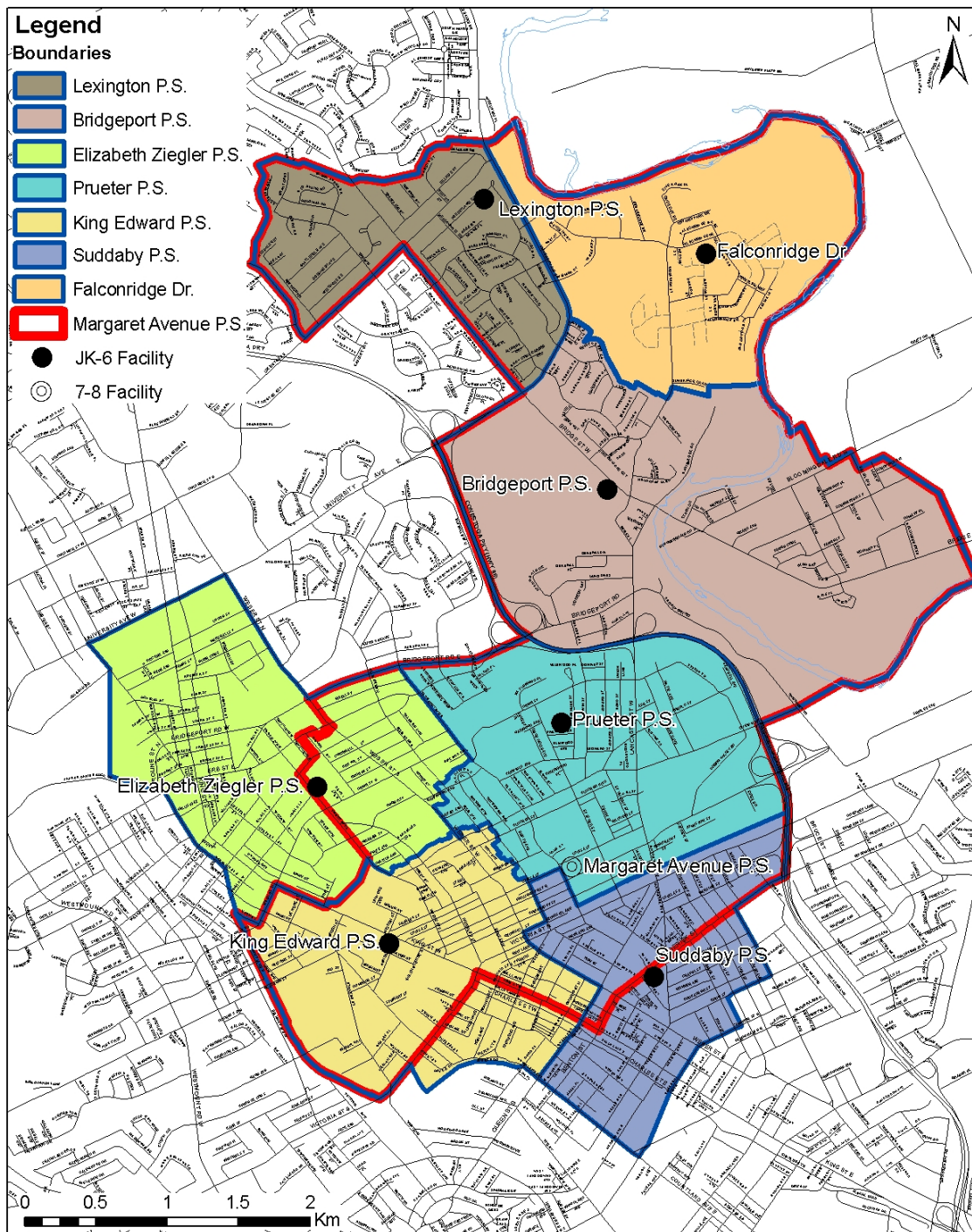
March 9, 2010



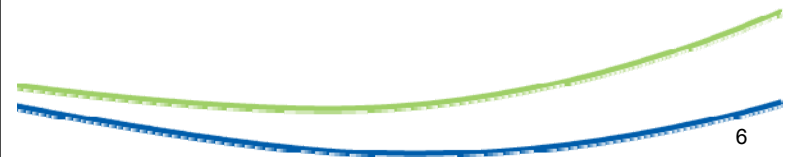
Waterloo Region
District School Board

Scenario 1

**Two new JK-6 facilities
(Lexington & Falconridge), 7-8
program remains at Margaret
Ave**



School	JK-6	7-8	Areas
Bridgeport	●		H,J,K,L
Elizabeth Ziegler	●		M,N,O
King Edward	●		T,U,V,W
Lexington	●		A,B,C,D
Margaret Avenue		●	All but M,V, Z
Prueter	●		P,Q,R,S
Suddaby	●		X,Y,Z
Falconridge Dr	●		E,F,G



Scenario 1

Two new JK-6 facilities
(Lexington & Falconridge), 7-8
program remains at Margaret
Ave

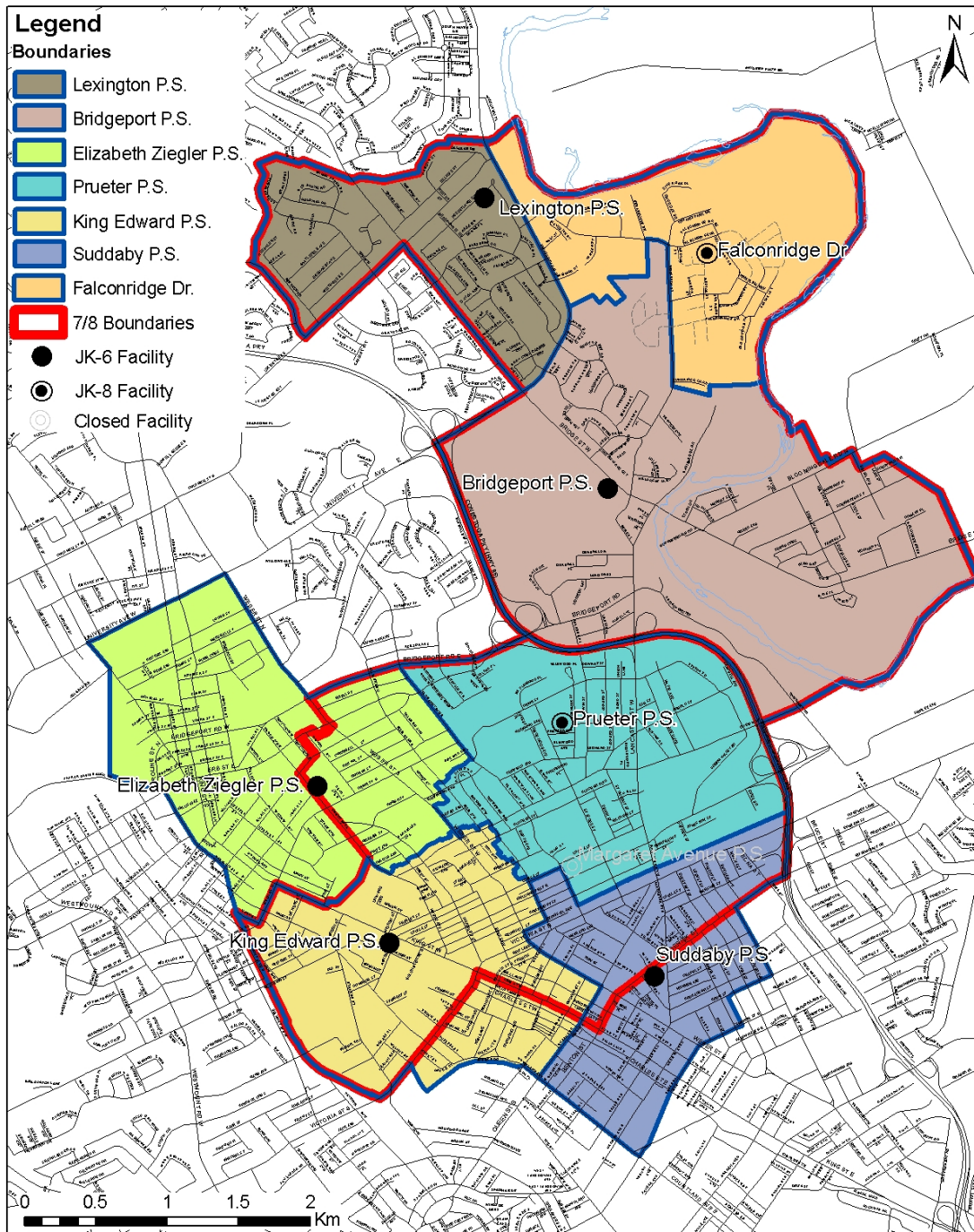
Facilities		Program				Draft Enrolment Projections (Total Students by Year)		
School	OTG Capacity	JK-6	7-8	FI	SpecEd	2013	2016	2019
Bridgeport	471	•				327	338	324
Elizabeth Ziegler	405	•		•	•	360	344	330
King Edward	357	•			•	341	336	321
Lexington	275	•				263	267	284
Margaret Avenue	435		•		•	367	372	400
Prueter	346	•			•	212	231	236
Suddaby	493	•		•		414	415	420
Falconridge Dr	350	•				291	399	389
TOTAL	3136	7	1	2	4	2575	2702	2704



Waterloo Region
District School Board

March 9, 2010

* Includes out of boundary ins and outs



Scenario 2

Two JK-8 facilities (Falconridge and Prueter), Margaret Ave closes

School	JK-6	JK-8	Areas
Bridgeport	●		G,H,J,K,L
Elizabeth Ziegler	●		M,N,O
King Edward	●		T,U,V,W
Lexington	●		A,B,C,D
Prueter		●	P,Q,R,S (7/8) N,O,P,Q, R,S,U,X, Y
Suddaby	●		X,Y,Z
Falconridge Dr		●	E,F (7/8) A,B,C,D, E,F,G,H, J,K,L

Scenario 2

Two JK-8 facilities (Falconridge and Prueter), Margaret Ave closes

Facilities		Program				Draft Enrolment Projections (Total Students by Year)		
School	OTG Capacity	JK-6	JK-8	FI	SpecEd	2013	2016	2019
Bridgeport	471	•				352	392	378
Elizabeth Ziegler	405	•		•	•	360	344	330
King Edward	357	•			•	341	336	321
Lexington	275	•				263	267	284
Margaret Avenue	CLOSED							
Prueter	400		•		•	370	386	402
Suddaby	493	•		•		414	415	420
Falconridge Dr	575		•			475	562	569
TOTAL	2980	5	2	2	3	2575	2702	2704

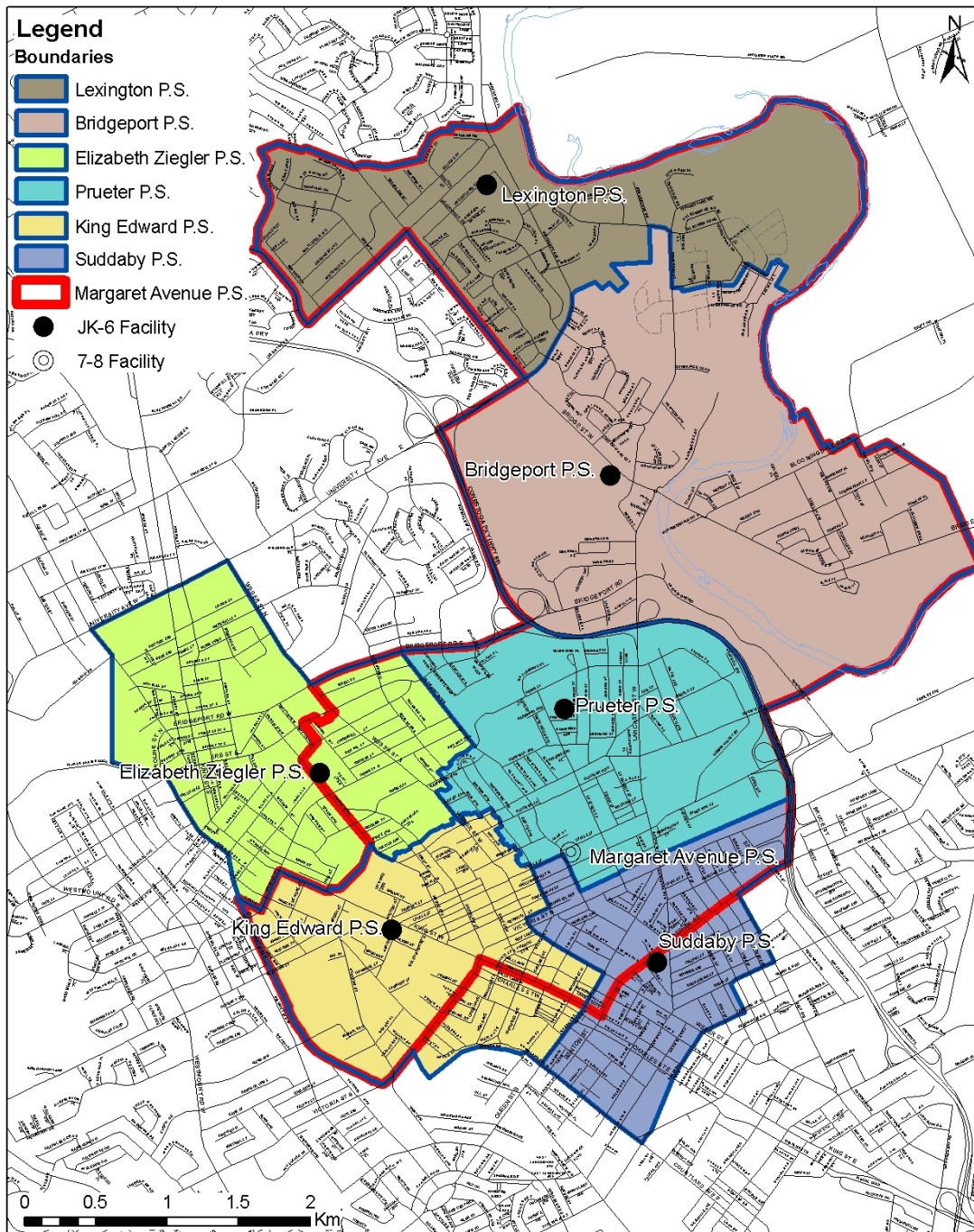
* Includes out of boundary ins and outs

School	2013		2016		2019	
	JK-6	7-8	JK-6	7-8	JK-6	7-8
Falconridge Dr	266	209	345	217	335	234
Prueter	212	158	231	155	236	166

March 9, 2010



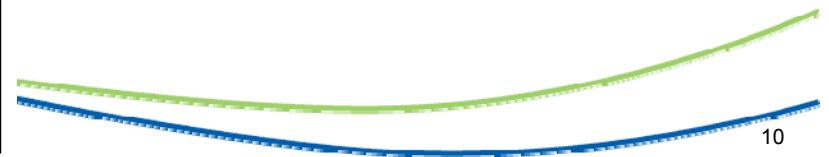
Waterloo Region
District School Board



Scenario 8

Reconstruct Lexington (with new boundary)

School	JK-6	7-8	Areas
Bridgeport	●		F(1/2), G, H, J, K, L
Elizabeth Ziegler	●		M, N, O
King Edward	●		T, U, V, W
Lexington	●		A, B, C, D, E, F(1/2)
Margaret Avenue		●	All but M, V, Z
Prueter	●		P, Q, R, S
Suddaby	●		X, Y, Z

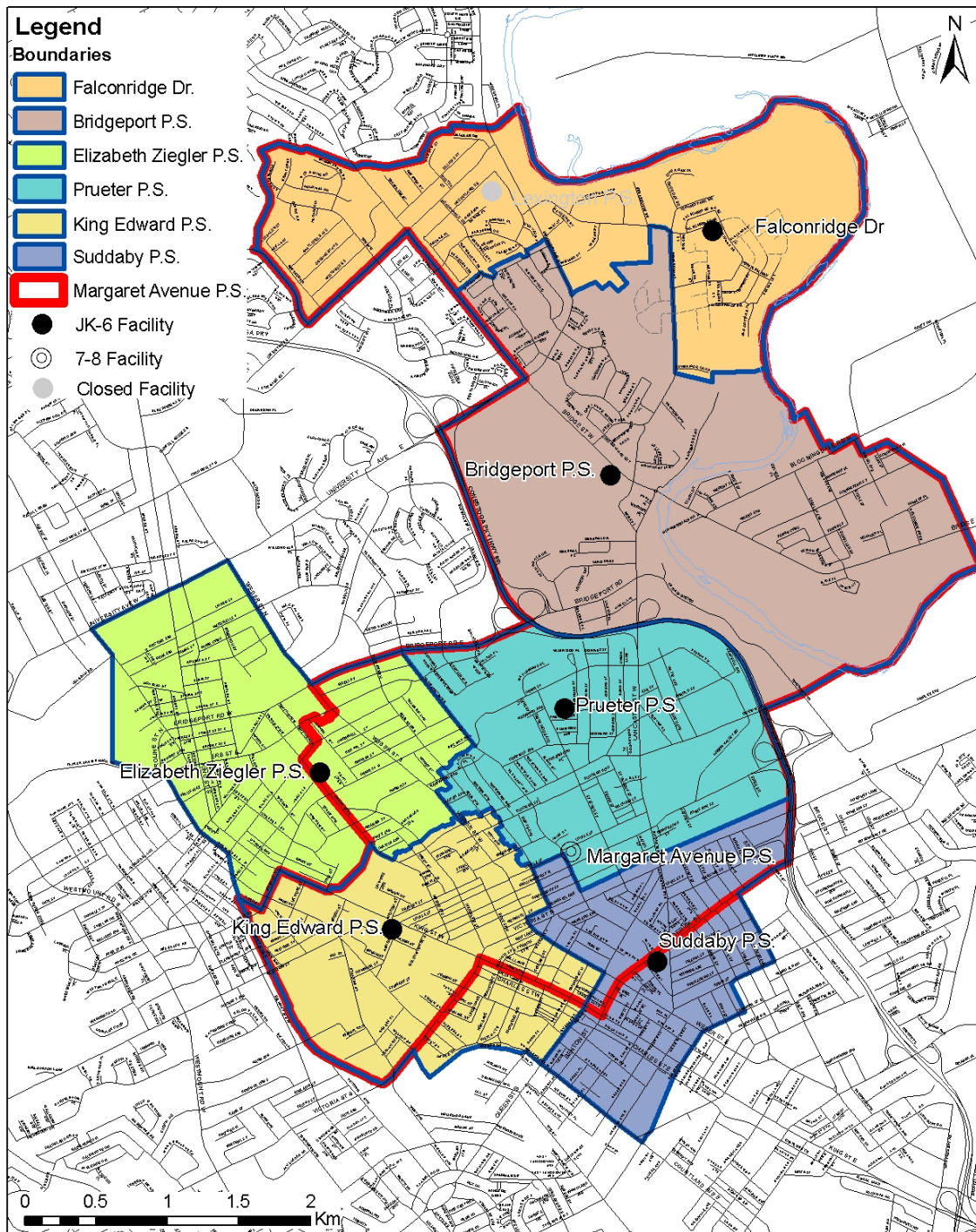


Scenario 8

Reconstruct Lexington (with new boundary)

Facilities		Program				Draft Enrolment Projections (Total Students by Year)		
School	OTG Capacity	JK-6	7-8	FI	SpecEd	2013	2016	2019
Bridgeport	471	•				428	497	490
Elizabeth Ziegler	405	•		•	•	360	344	330
King Edward	357	•			•	341	336	321
Lexington	500	•				453	507	507
Margaret Avenue	435		•		•	367	372	400
Prueter	346	•			•	212	231	236
Suddaby	493	•		•		414	415	420
TOTAL	3011	6	1	2	4	2575	2702	2704

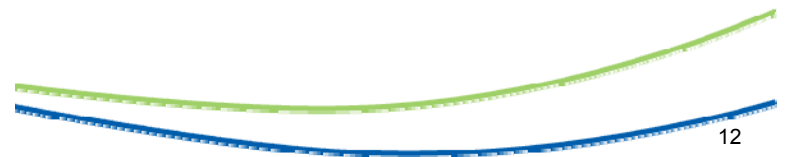
* Includes out of boundary ins and outs



Scenario 9

Construct New JK-6 at Falconridge Dr

School	JK-6	7-8	Areas
Bridgeport	•		D,G,H,J, K,L
Elizabeth Ziegler	•		M,N,O
King Edward	•		T,U,V,W
Lexington	CLOSED		
Margaret Avenue		•	All but M,V,Z
Prueter	•		P,Q,R,S
Suddaby	•		X,Y,Z
Falconridge Dr	•		A,B,C, E, F



Scenario 9

Construct New JK-6 at Falconridge Dr

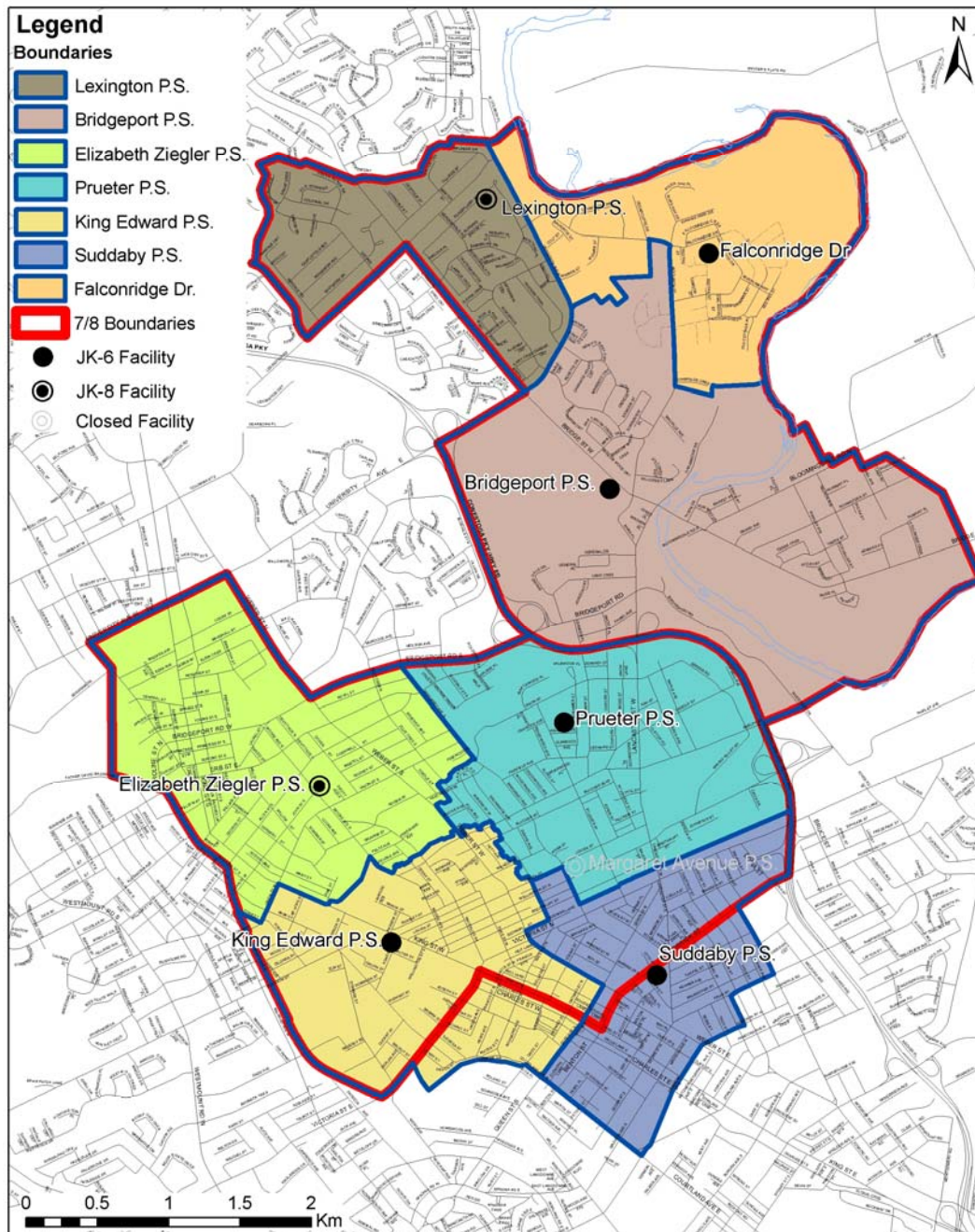
Facilities		Program				Draft Enrolment Projections (Total Students by Year)		
School	OTG Capacity	JK-6	7-8	FI	SpecEd	2013	2016	2019
Bridgeport	471	•				432	471	460
Elizabeth Ziegler	405	•		•	•	360	344	330
King Edward	357	•			•	341	336	321
Lexington	CLOSED							
Margaret Avenue	435		•		•	367	372	400
Prueter	346	•			•	212	231	236
Suddaby	493	•		•		414	415	420
Falconridge Dr	525	•				449	533	537
TOTAL	3036	6	1	2	4	2575	2702	2704

* Includes out of boundary ins and outs



Scenario 10

**New JK-8 at Lexington, New
JK-6 at Falconridge Dr, convert
Elizabeth Ziegler to JK-8**



School	JK-6	JK-8	Areas
Bridgeport	•		G,H,J,K,L
Elizabeth Ziegler		•	M,N,O (7/8 add) P,Q,R,S, T,U,V,X, Y
King Edward	•		T,U,V,W
Lexington		•	A,B,C,D (7/8 add) E,F,G,H, J,K,L
Prueter	•		P,Q,R,S
Suddaby	•		X,Y,Z
Falconridge Dr	•		E,F

Scenario 10

**New JK-8 at Lexington, New
JK-6 at Falconridge Dr, convert
Elizabeth Ziegler to JK-8**

Facilities		Program				Draft Enrolment Projections (Total Students by Year)		
School	OTG Capacity	JK-6	JK-8	FI	SpecEd	2013	2016	2019
Bridgeport	471	•				352	392	378
Elizabeth Ziegler	550		•	•	•	549	546	540
King Edward	357	•			•	341	336	321
Lexington	500		•			472	484	518
Margaret Avenue	CLOSED							
Prueter	346	•			•	212	231	236
Suddaby	493	•		•		414	415	420
Falconridge Dr	375	•				266	345	335
TOTAL	3092	5	2	2	3	2606	2749	2748

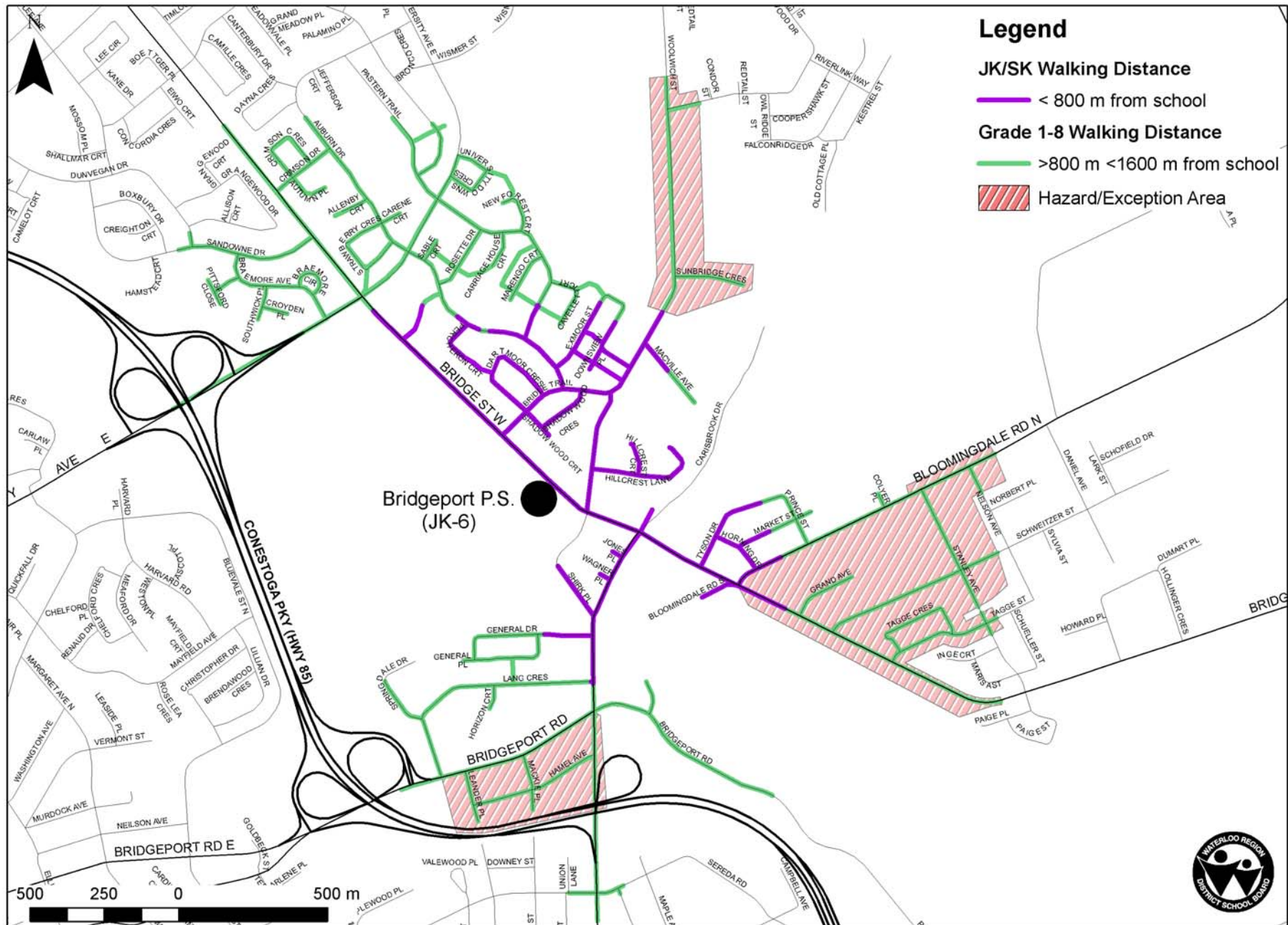
School	2013		2016		2019	
	JK-6	7-8	JK-6	7-8	JK-6	7-8
Lexington	242	217	267	217	284	234
Elizabeth Ziegler	360	189	344	202	330	210

March 9, 2010

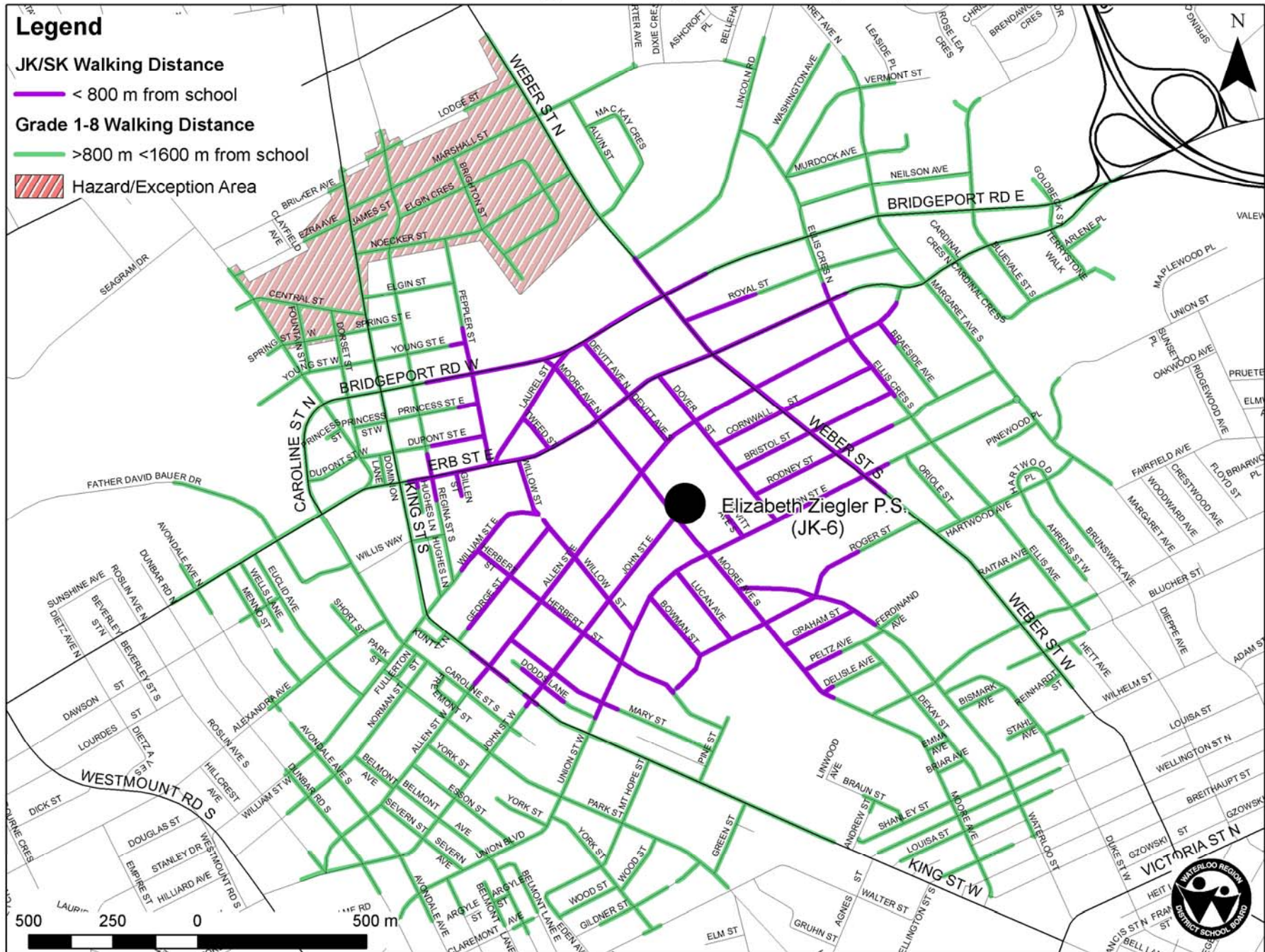


**Waterloo Region
District School Board**

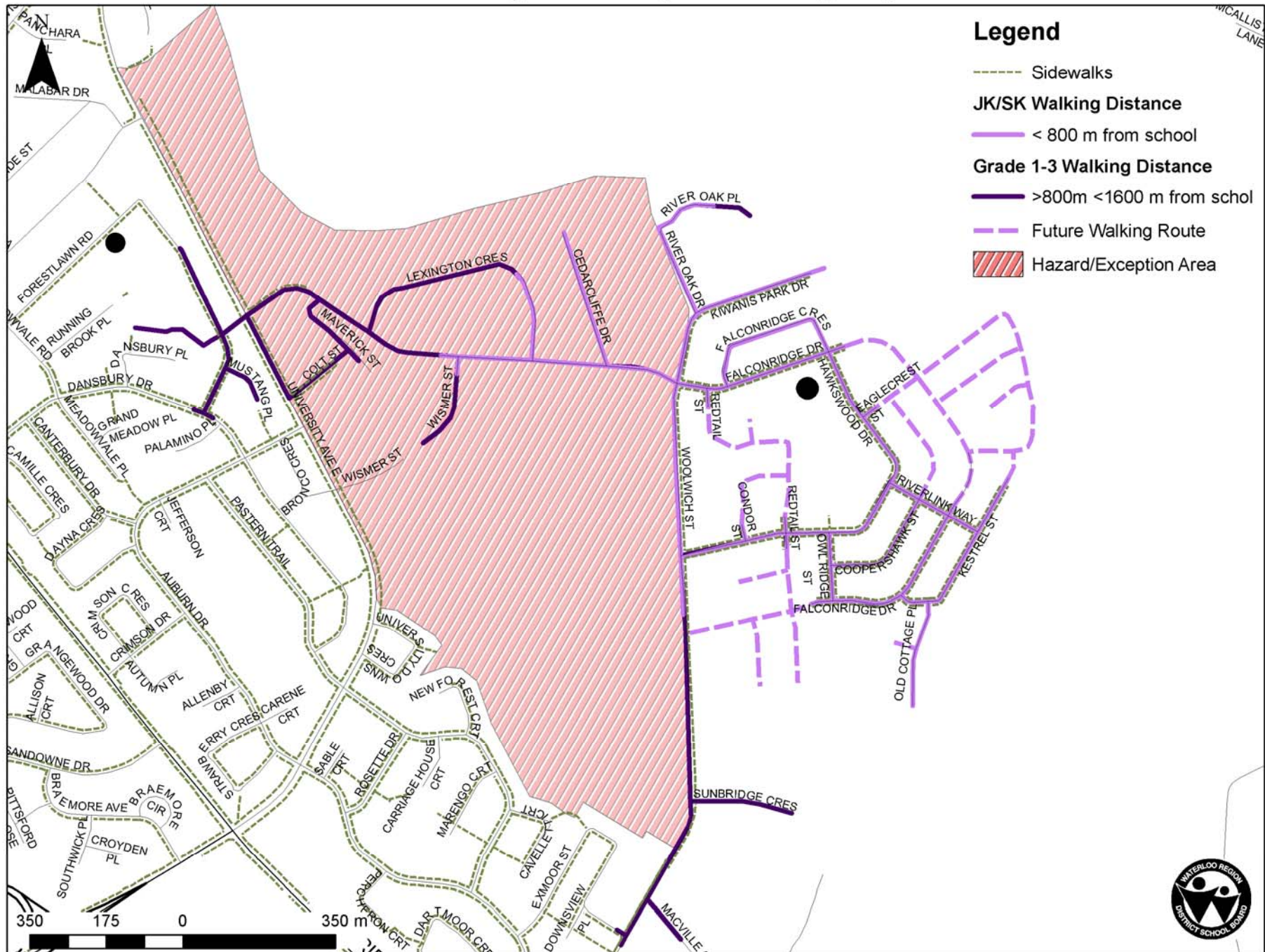
Bridgeport P.S. Transportation Eligibility



Elizabeth Ziegler Transportation Eligibility



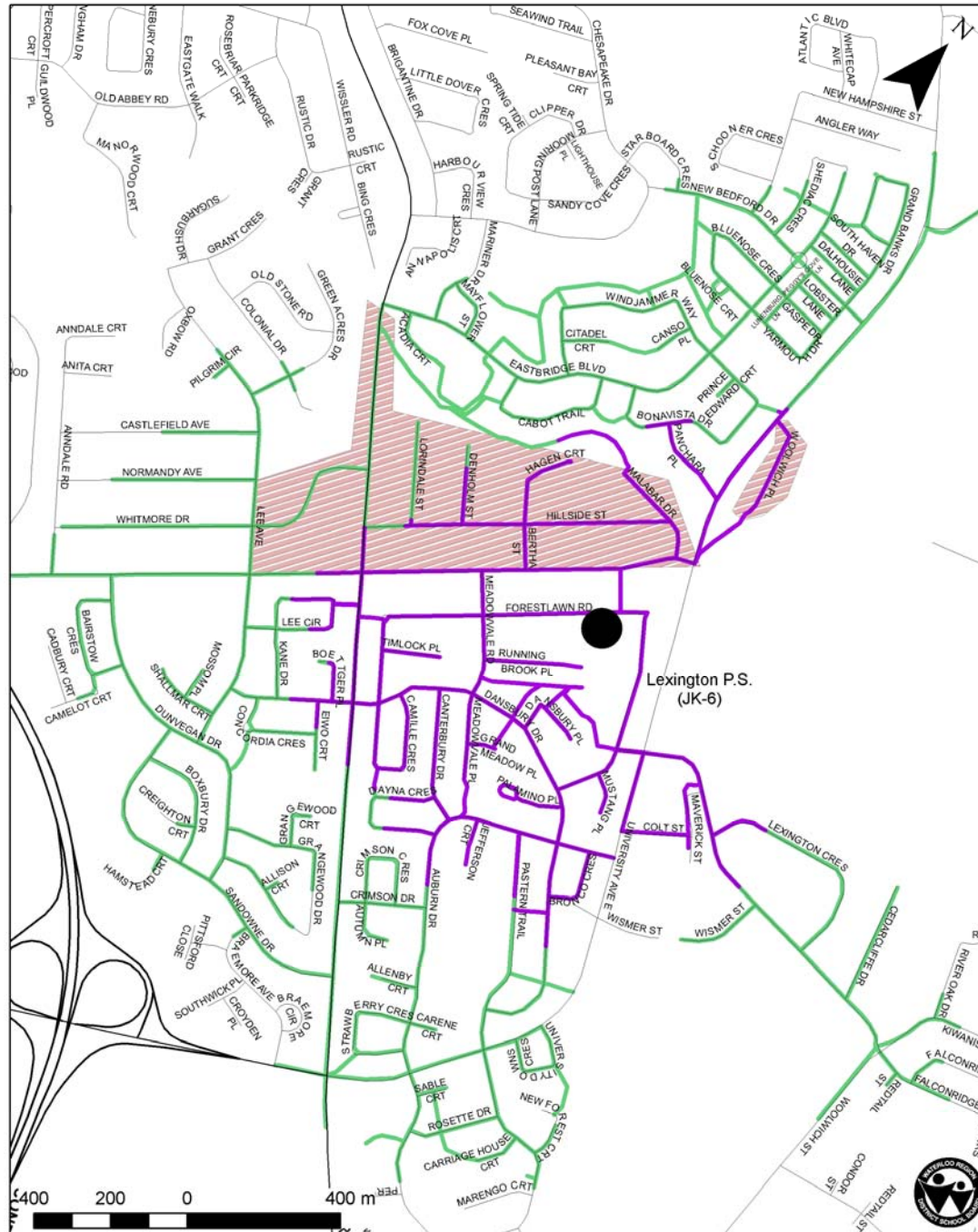
Falconridge Dr Transportation Eligibility



King Edward P.S. Transportation Eligibility

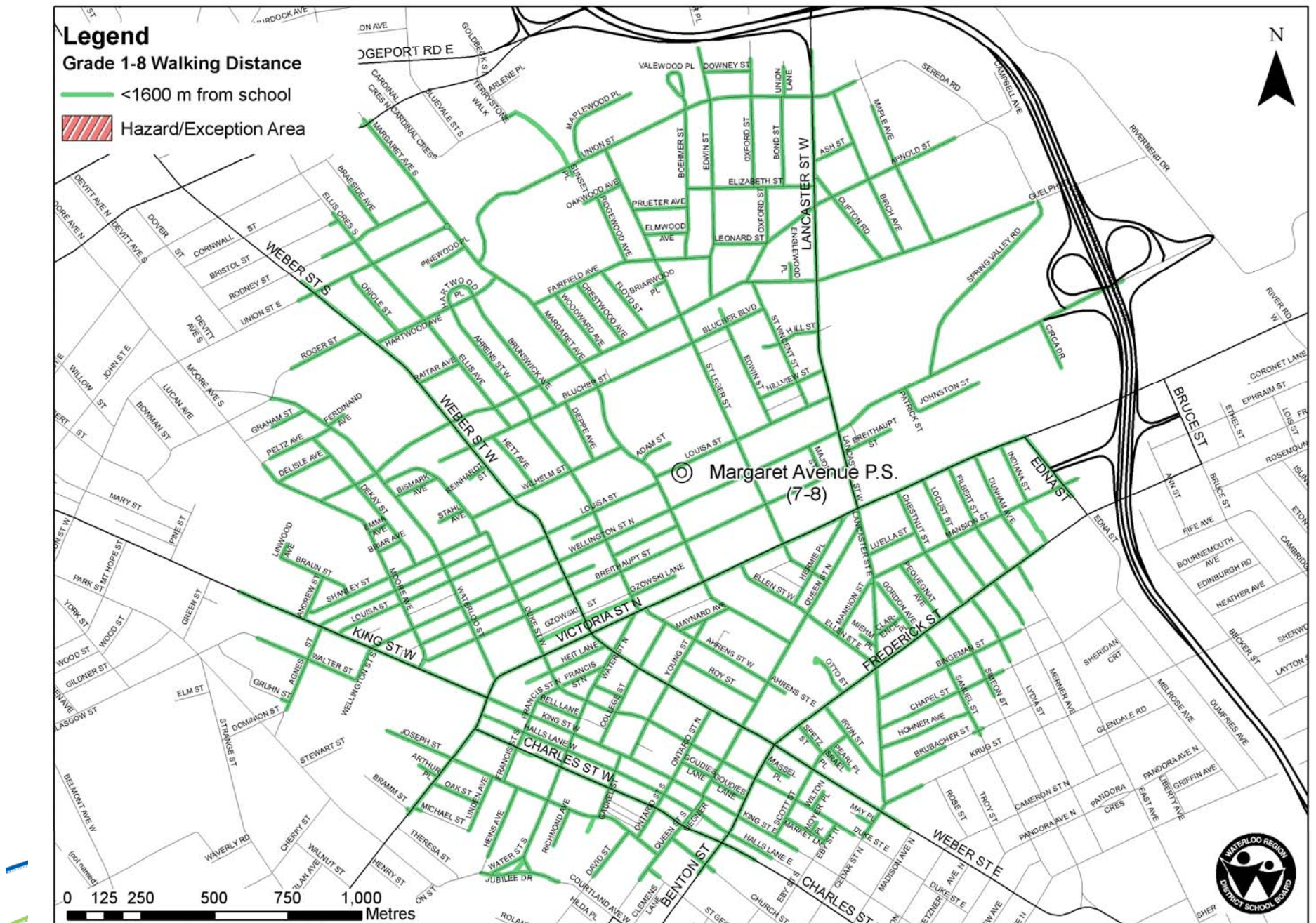


Lexington P.S. Transportation Eligibility

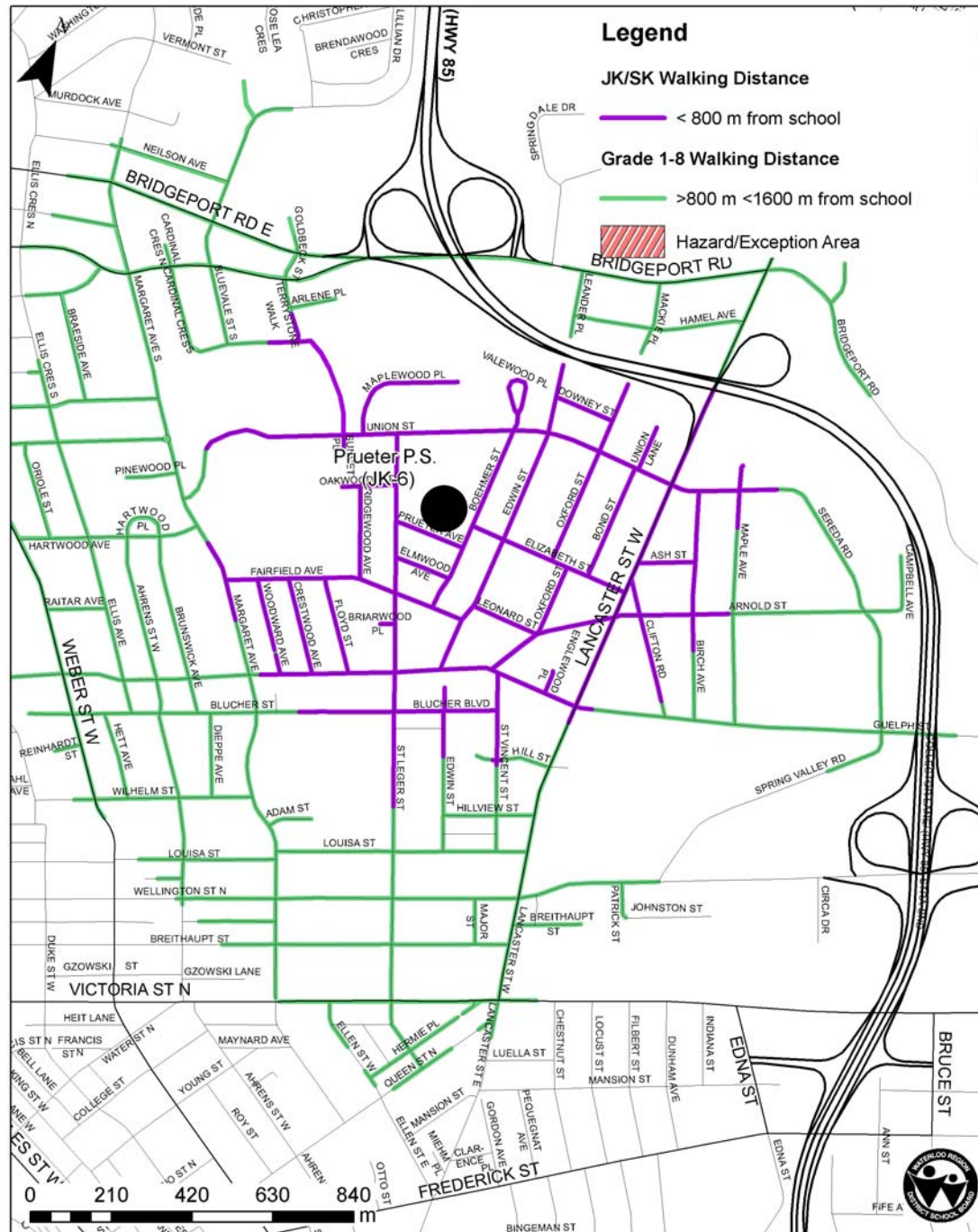


March 9, 2010

Margaret Ave P.S. Transportation Eligibility



Prueter P.S. Transportation Eligibility



March 9, 2010

Suddaby P.S. Transportation Eligibility

