



Waterloo Region
District School Board

Preston Area Elementary Schools

Boundary Study

Working Group Meeting # 7
Apr. 9, 2009

Parkway Public School



- 1. Welcome**
- 2. Draft Objectives**
- 3. Scenario Discussion/Evaluation**
 - New Scenario (8)
- 4. Round Table**
- 5. Future Meeting Dates**



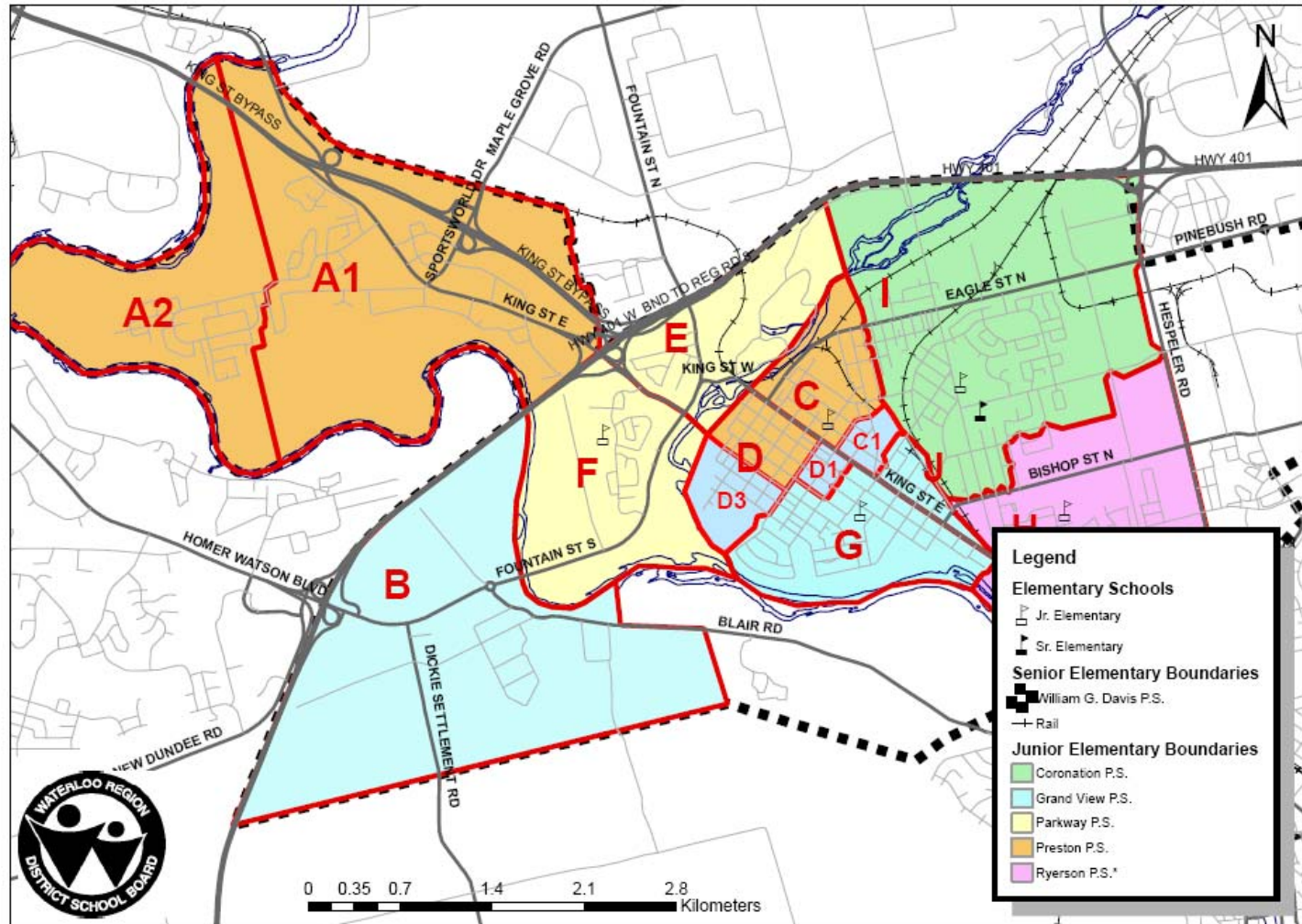
- Address over and declining enrolment issues, aligning facilities and enrolment in the longer term
- Have regard for some organizational and class objectives of the Good Schools Committee Report.
- Be financially feasible
- Address any resulting student transitions, and avoid fragmentation of communities
- Determine any facility issues or upgrades that would facilitate boundary changes, enhance program delivery, and address accessibility concerns.



Scenario 8

- Grand View gets Area B and Areas D1, D3, and C1 from Preston

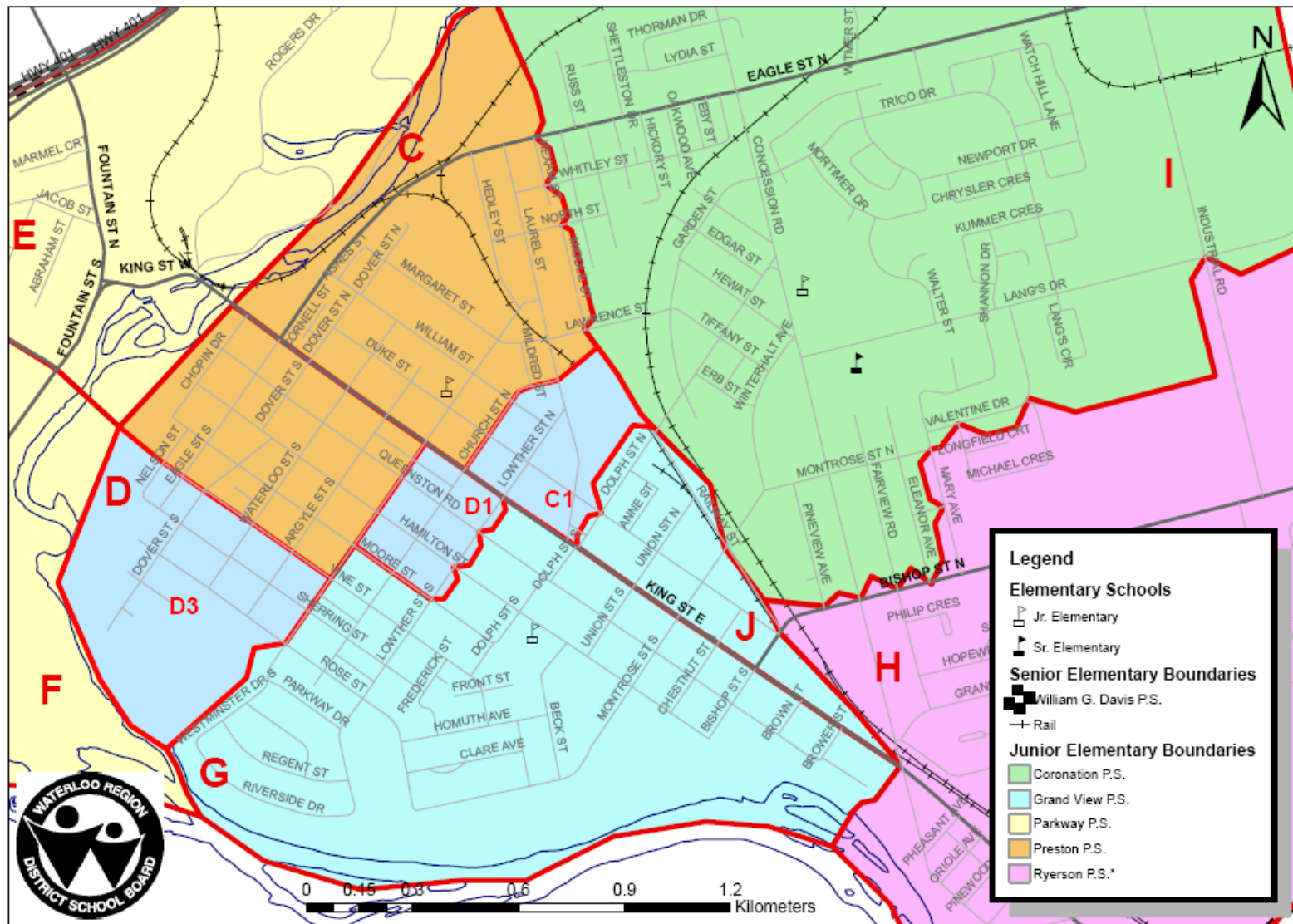
Preston Boundary Study: Scenario 8





Scenario 8 – Downtown Preston detail

Preston Boundary Study: Scenario 8





Scenario 8: Grand View gets Area B and portions of C and D

School	Built Capacity	2010		2014		2018	
		FTE	% Capacity	Total Students	% Capacity	Total Students	% Capacity
PRE	259	284	110%	359	139%	312	120%
PKW	236	186.5	79%	240	102%	255	108%
GVC	216	201.5	93%	190	88%	193	89%
Total	711	672	95%	789	111%	760	107%

- Preston P.S. reduced enrolment, peaks in mid term (back up to 5 portables), decreases longer term.
- Parkway P.S. decreases in short term, enrolment increases as development within boundary occurs
- Grand View P.S. slightly increases enrolment remains below capacity



Scenario 8

Objective	Meets	Doesn't meet
Align facility/enrolment over longer term	Parkway enrolment increases in long term	Preston enrolment/portables back to current state in the midterm. Grand View remains under capacity.
Regard for Good Schools Standing Committee Report	Preston at 2 classes/grade recommendation.	Grand View and Parkway below 2 classes/grade recommendation.
Financially feasible	Yes	
Address student transitions, avoid community fragmentation	4 Areas (B, D1, D3, C1) experience transition to a new school (73 students 2010 JK-6). Avoids some crossing of King St.	Fragmentation of Areas C and D. More student crossings at streets with no stoplights.
Facility upgrades, accessibility concerns	Recommendation Grand View given consideration for priority on accessibility project list. Possible small addition at Preston.	



Scenario 1- Area D to Grand View

Scenario 6 - Area A2 to Grand View

Scenario 7- Area A2 to Grand View, Area A1to Parkway

Scenario 3c - Area A1 and A2 to Grand View, Area J to Preston

Scenario 3a - Area A1 and A2 to Grand View

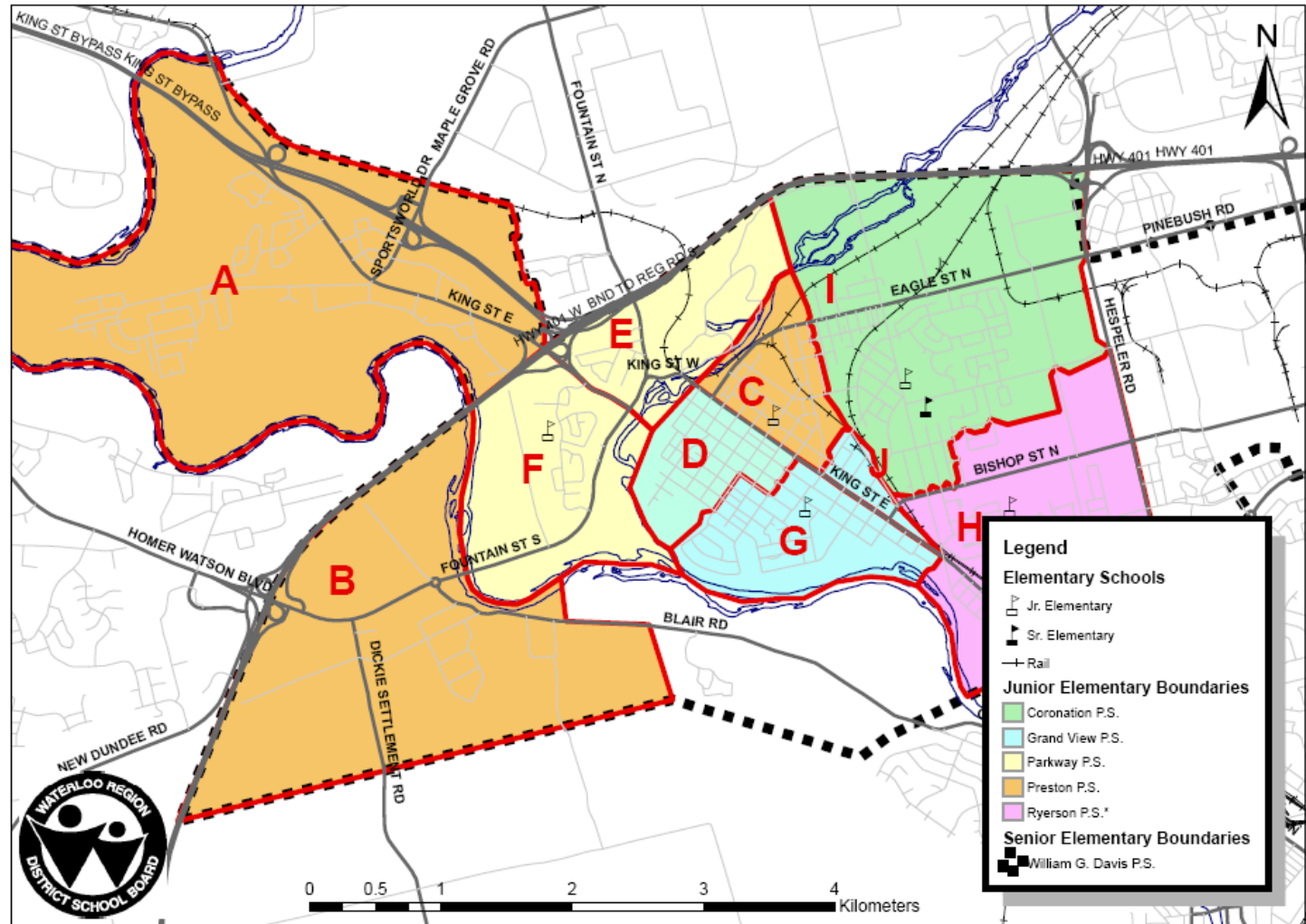
Scenario 8 – Subdivision of Area's C and D, take Areas B, D1, D3, and C1 to Grand View



Scenario 1

- Grand View gets Area D from Preston

Preston Boundary Study: Scenario 1





Scenario 1: Grandview gets Area D from Preston

School	Built Capacity	2010		2014		2018	
		FTE	% Capacity	Total Students	% Capacity	Total Students	% Capacity
PRE	259	272.5	105%	332	128%	281	108%
PKW	236	186.5	79%	240	102%	255	108%
GVC	216	213	99%	217	100%	224	104%
Total	711	672	95%	789	111%	760	107%

- Preston P.S. reduced enrolment, peaks in mid term (approx. 4 portables), decreases longer term.
- Parkway P.S. decreases in short term, enrolment increases as development within boundary occurs
- Grand View P.S. increases enrolment remains at or about capacity



Scenario 1

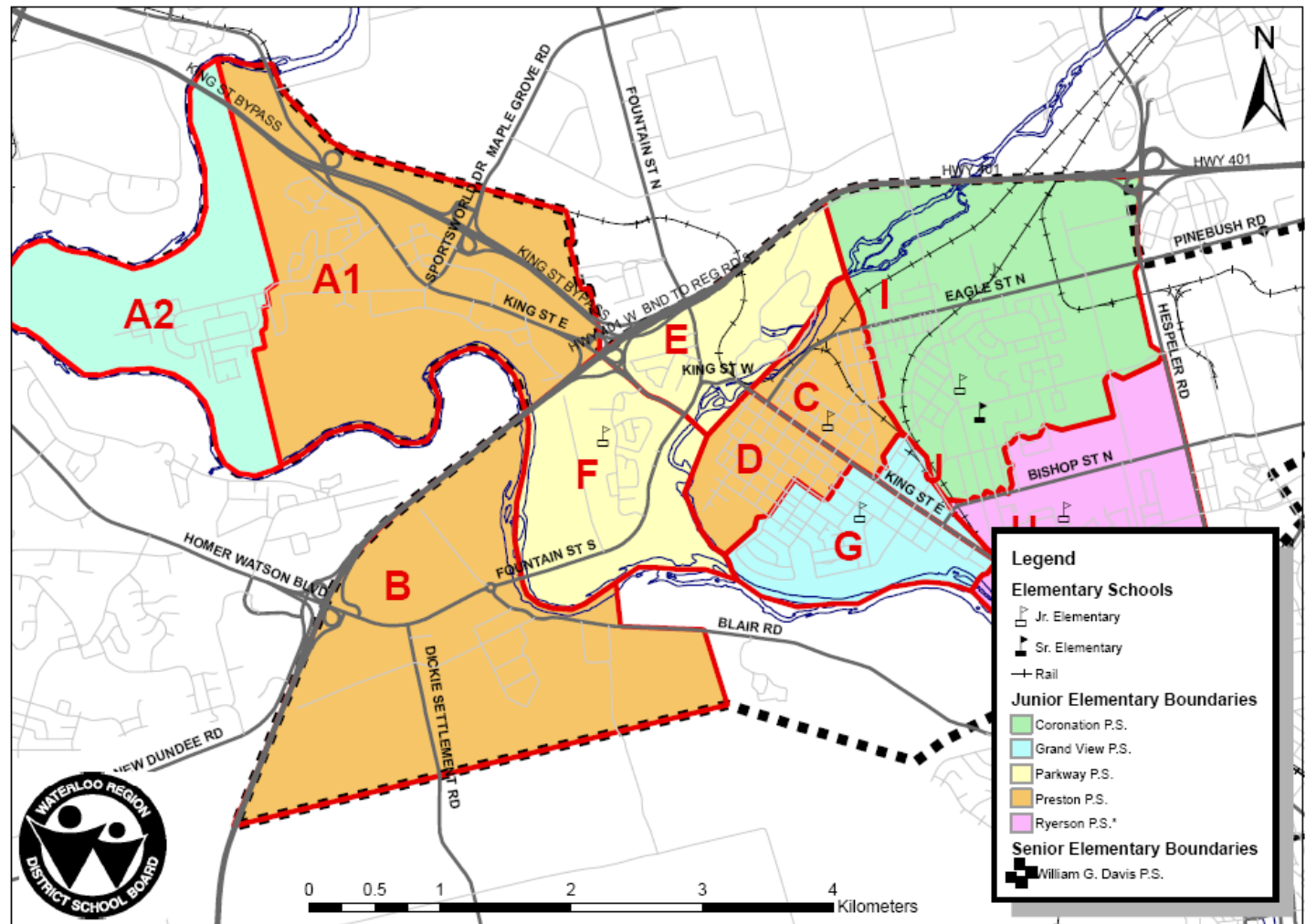
Objective	Meets	Doesn't meet
Align facility/enrolment over longer term	Preston enrolment/portables reduced. Grand View enrolment increased. Parkway enrolment increases in long term	
Regard for Good Schools Standing Committee Report	Preston slightly below 2 classes/grade recommendation. More equitable programming b/w facilities.	Grand View and Parkway below 2 classes/grade recommendation.
Financially feasible	Yes	
Address student transitions, avoid community fragmentation	1 area (D) experiences transition to a new school (101 students 2010 JK-6). Avoids some crossing of King St. Addresses fragmentation b/w D/G.	Fragmentation b/w C/D. More student crossings at streets with no stoplights.
Facility upgrades, accessibility concerns	Recommendation Grand View given consideration for priority on accessibility project list. Grand View likely to require upgrades to Learning Resource Centre	



Scenario 6

- Grand View gets Area A2 from Preston

Preston Boundary Study: Scenario 6





Scenario 6: Grand View gets Area A2 from Preston.

School	Built Capacity	2010		2014		2018	
		FTE	% Capacity	Total Students	% Capacity	Total Students	% Capacity
PRE	259	292	113%	332	128%	298	115%
PKW	236	186.5	79%	240	102%	255	108%
GVC	216	193.5	90%	217	100%	205	95%
Total	711	672	95%	789	111%	758	107%

- Preston P.S. reduced enrolment in short term, peaks in midterm (approx. four portables), decreases longer term
- Parkway P.S. decreases in short term, enrolment increases as development within boundary occurs
- Grand View P.S. increases enrolment, remains at or just below capacity



Scenario 6

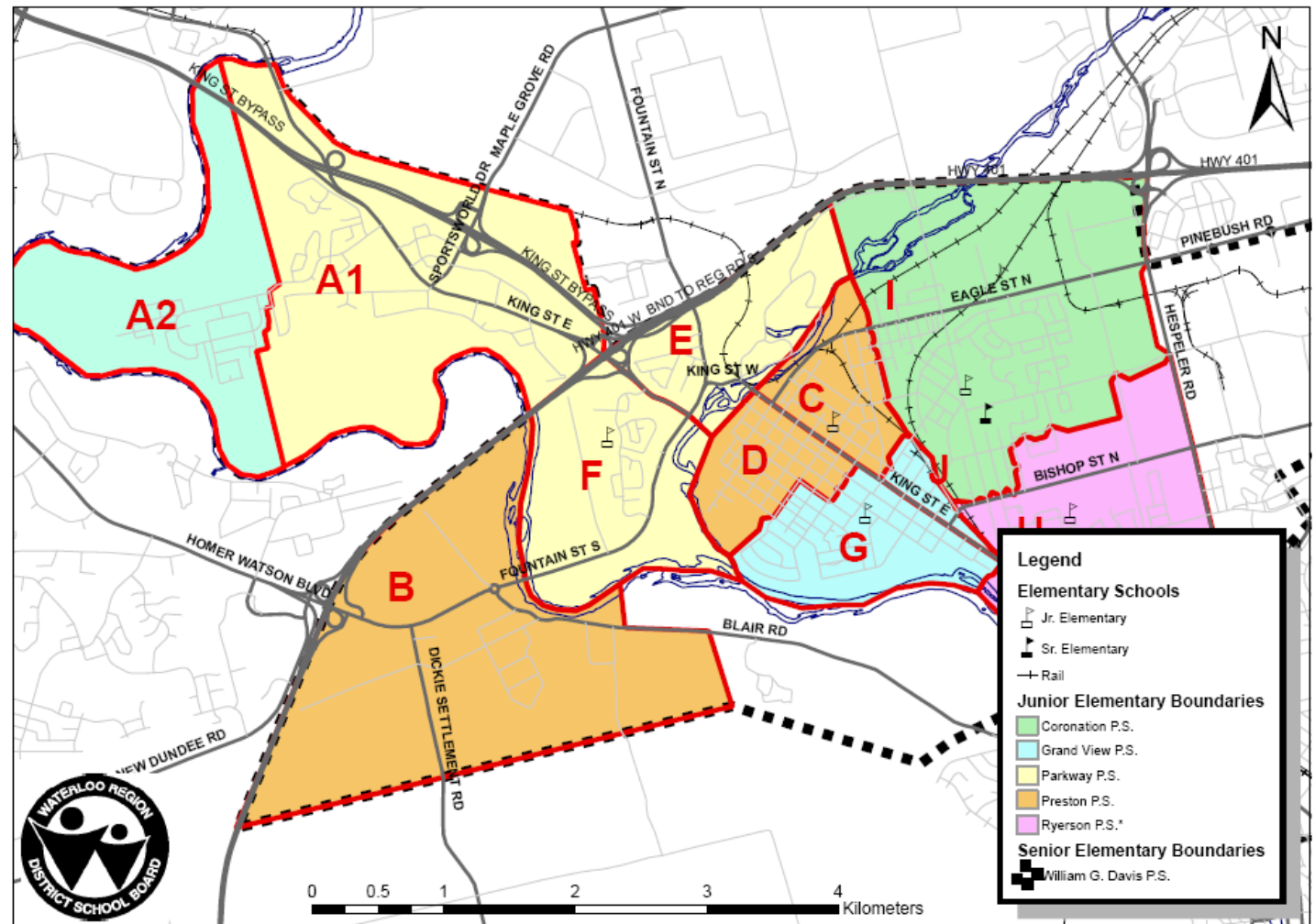
Objective	Meets	Doesn't meet
Align facility/enrolment over longer term	Preston enrolment/portables reduced. Grand View enrolment increased. Parkway enrolment increases in long term	
Regard for Good Schools Standing Committee Report	Preston slightly below 2 classes/grade recommendation. More equitable programming b/w facilities.	Grand View and Parkway below 2 classes/grade recommendation
Financially feasible	Yes	
Address student transitions, avoid community fragmentation	1 area (A2) experiences transition to a new school (78 students 2010 JK-6).	Fragmentation of Area A
Facility upgrades, accessibility concerns	Recommendation Grand View given consideration for priority on accessibility project list. Grand View likely to require upgrades to Learning Resource Centre	



Scenario 7

- Grand View gets Area A2 from Preston. Parkway gets Area A1 from Preston.

Preston Boundary Study: Scenario 7





Scenario 7: Grand View gets Area A2 from Preston. Parkway gets Area A1 from Preston

School	Built Capacity	2010		2014		2018	
		FTE	% Capacity	Total Students	% Capacity	Total Students	% Capacity
PRE	259	235.5	91%	271	105%	247	95%
PKW	236	243	103%	301	128%	306	130%
GVC	216	193.5	90%	217	100%	205	95%
Total	711	672	95%	789	111%	758	107%

- Preston P.S. reduced enrolment, at or just below capacity
- Parkway P.S. at capacity in short term, enrolment above capacity as development within boundary occurs.
- Grand View P.S. increases enrolment, remains at or just below capacity



Scenario 7

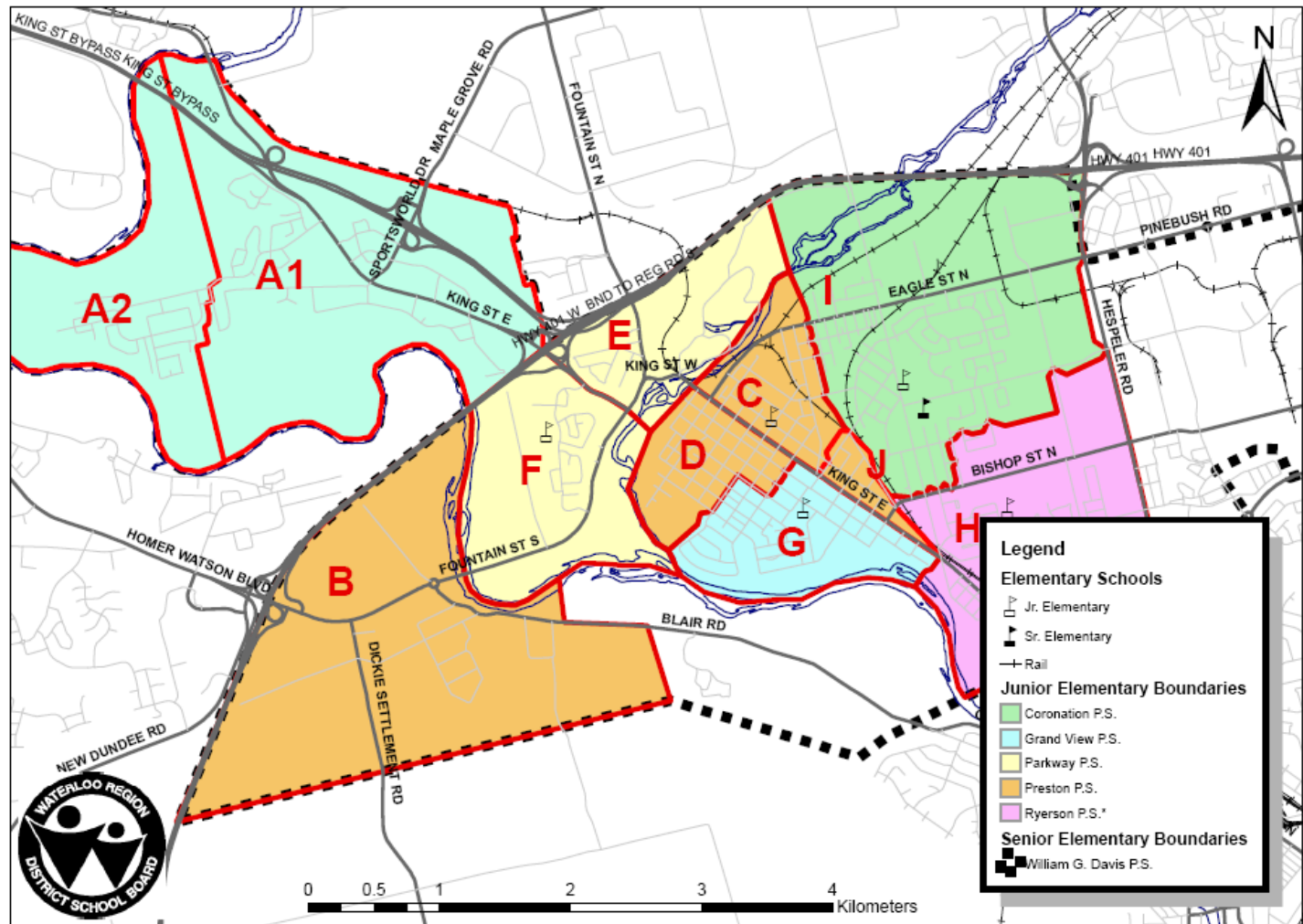
Objective	Meets	Doesn't meet
Align facility/enrolment over longer term	Preston enrolment, portables likely eliminated. Grand View enrolment increased.	Parkway enrolment increases significantly in long term.
Regard for Good Schools Standing Committee Report	More equitable programming b/w facilities. Parkway closer to 2 classes/grade recommendation.	Grand View, Preston below 2 classes/grade recommendation
Financially feasible	Yes	
Address student transitions, avoid community fragmentation	2 areas (A2, A1) experience transition to a new school (149 students 2010 JK-6).	Fragmentation of Area A
Facility upgrades, accessibility concerns	Recommendation Grand View given consideration for priority on accessibility project list. Grand View likely to require upgrades to Learning Resource Centre. Possible addition/portapak at Parkway.	



Scenario 3c

- Grand View gets Area A1 and A2 from Preston.
- Preston gets Area J from Grand View.

Preston Boundary Study: Scenario 3c





Scenario 3c: Grand View gets Area A2 and A1 from Preston. Preston gets Area J from Grand View.

School	Built Capacity	2010		2014		2018	
		FTE	% Capacity	Total Students	% Capacity	Total Students	% Capacity
PRE	259	269.5	104%	308	119%	287	111%
PKW	236	186.5	79%	240	102%	255	108%
GVC	216	216	100%	241	112%	216	100%
Total	711	672	95%	789	111%	758	107%

- Preston P.S. reduced enrolment, just above capacity in short term, peak in mid term (approx three portables)
- Parkway P.S. decreases in short term, enrolment increases as development within boundary occurs
- Grand View P.S. increases enrolment, at capacity in short term, above capacity in midterm (approx two portables)



Scenario 3c

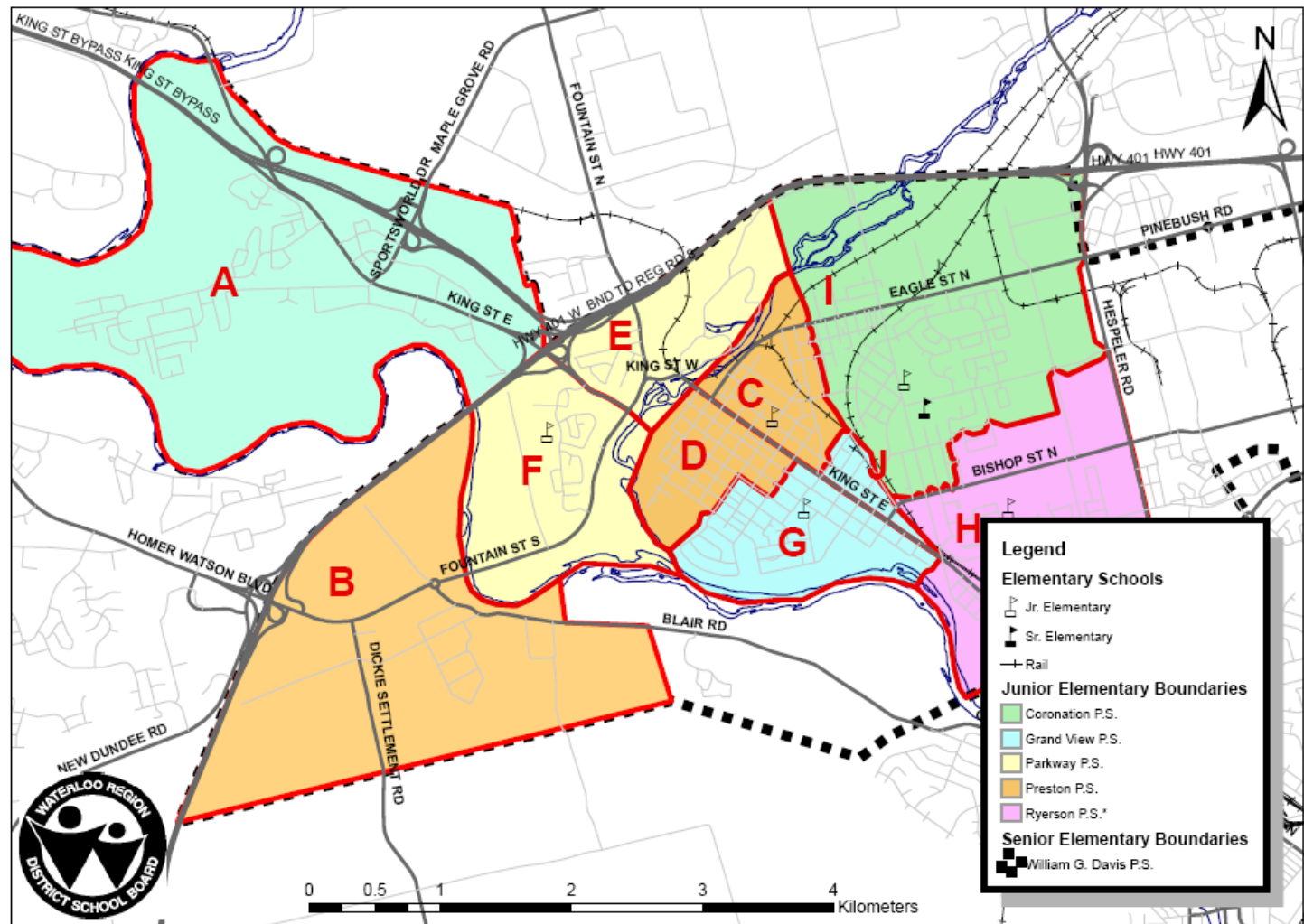
Objective	Meets	Doesn't meet
Align facility/enrolment over longer term	Preston enrolment/portables reduced. Grand View enrolment increased. Parkway enrolment increases in long term	
Regard for Good Schools Standing Committee Report	More equitable programming b/w facilities.	All schools below 2 classes/grade recommendation
Financially feasible	Yes	
Address student transitions, avoid community fragmentation	3 areas (A2, A1, J) experience transition to a new school (188 students 2010 JK-6).	Fragmentation b/w G/J
Facility upgrades, accessibility concerns	Recommendation Grand View given consideration for priority on accessibility project list. Grand View likely to require upgrades to Learning Resource Centre	



Scenario 3a

- Grand View gets Area A from Preston

Preston Boundary Study: Scenario 3a





Scenario 3a: Grand View gets Area A from Preston

School	Built Capacity	2010		2014		2018	
		FTE	% Capacity	Total Students	% Capacity	Total Students	% Capacity
PRE	259	235.5	91%	271	105%	247	95%
PKW	236	186.5	79%	240	102%	255	108%
GVC	216	250	116%	278	129%	258	119%
Total	711	672	95%	789	111%	760	107%

- Preston P.S. reduced enrolment stays at or about capacity
- Parkway P.S. decreases in short term, enrolment increases as development within boundary occurs
- Grand View P.S. increases enrolment, remains over capacity



Scenario 3a

Objective	Meets	Doesn't meet
Align facility/enrolment over longer term	Preston enrolment/portables reduced. Grand View enrolment increased. Parkway enrolment increases in long term	Grand View enrolment significantly increased above capacity.
Regard for Good Schools Standing Committee Report	More equitable programming b/w facilities.	No schools meet 2 class/grade recommendation.
Financially feasible	Yes	
Address student transitions, avoid community fragmentation	2 areas (A1,A2) experience transition to a new school (149 students 2010 JK-6). Avoids community fragmentation (Lowther piece excepted)	
Facility upgrades, accessibility concerns	Recommendation Grand View given consideration for priority on accessibility project list. Grand View likely to require upgrades to Learning Resource Centre. Also possibly a small addition.	



Public Meeting

- Wednesday April 29, 2009 at Preston High School, 7:00-9:00 pm

Next Working Group meeting

- Tuesday May 5, 2009 at Preston P.S. 4:30 – 6:00 pm.



- Website: www.wrdsb.on.ca
 - » Boundary Studies and Accommodation Reviews
 - » Preston Area Elementary Schools Boundary Study
- E-mail: boundaryfeedback@wrdsb.on.ca
- Phone: 519-570-0003 ext. 4419