

Forest Hill/Trillium
Boundary Study
Working Group Meeting #6

November 8, 2011

Forest Hill P.S. Staff Room

5:00 – 6:00 pm



Waterloo Region
District School Board

Agenda

1. Approval of Minutes
2. Forest Hill P.S. and Trillium P.S. Capacity
3. Scenario 11
4. Requested Information:
 - Enrolment by grade summary
 - Transiency data
5. Discussion of next steps
6. Roundtable
7. Future Meeting Dates



Forest Hill P.S. Capacity



Room Type (pu)	Ministry Loading	# Rooms
Kindergarten	20	7
Classroom	23	14
Spec. Ed	9	1
Resource	12	1

Forest Hill P.S. Capacity 2011/12

Room Type	Ministry Loading	Actual Loading	# Rooms	Ministry Capacity	Functional Capacity
Kindergarten	20	26	7	140	179***
Classroom	23	23	14	322	276*
Spec. Ed	9	0	1	9	0
Resource	12	0	1**	12	0
Total			23	483	455

*One classroom used for ABLE class - 12 students, 2 rooms used for other purposes, 0 loading

**Used as computer lab

***One room used for regular class, not kindergarten, 23 loading



Forest Hill P.S. Possible Future Capacity – Without office/library relocation

Room Type	Ministry Loading	Actual Loading	# Rooms	Ministry Capacity	Functional Capacity
Kindergarten	20	26	7	140	179***
Classroom	23	23	15	345	299*
Spec. Ed	9	0	1	9	0
Resource	12	0	1**	12	0
Total			24	506	478

*One classroom used for ABLE class - 12 students, 2 rooms used for other purposes, 0 loading

**Used as computer lab

***One room used for regular class, not kindergarten, 23 loading

Forest Hill P.S. Possible Future Capacity – With office/library relocation

Room Type	Ministry Loading	Actual Loading	# Rooms	Ministry Capacity	Functional Capacity
Kindergarten	20	26	7	140	179**
Classroom	23	23	16	368	322*
Spec. Ed	9	0	1	9	0
Resource	12	0	1	12	0
Total			25	529	501

*One classroom used for ABLE class - 12 students, 2 rooms used for other purposes, 0 loading

**One room used for regular class, not kindergarten, 23 loading

The floor plan of the Trillium P.S. Classroom Wing is divided into several functional areas. The central section contains a large General Purpose Room (W3) with a fold-down tier and an operable wall stage, surrounded by classrooms (E1-E8, W1-W8) and work rooms. The bottom section includes a Library Resource Centre (F16), Kindergarten rooms (F20, F24), and administrative offices (F2, F4). A legend on the right identifies room types by color: Kindergarten (pink), Classroom (blue), Spec. Ed (yellow), and Resource (orange).

Room Type Legend:

- Kindergarten (Pink)
- Classroom (Blue)
- Spec. Ed (Yellow)
- Resource (Orange)

7

Trillium P.S. Capacity 2011/12

Room Type	Ministry Loading	Actual Loading	# Rooms	Ministry Capacity	Functional Capacity
Kindergarten	20	20	1	20	20
Classroom	23	23	9	207	184*
Spec. Ed	9	20	1	9	20**
Resource	0	0	1	0	0
Total				236	224

*One classroom used as a computer lab

**Used as kindergarten classroom



Trillium P.S. Proposed Capacity 2012/13



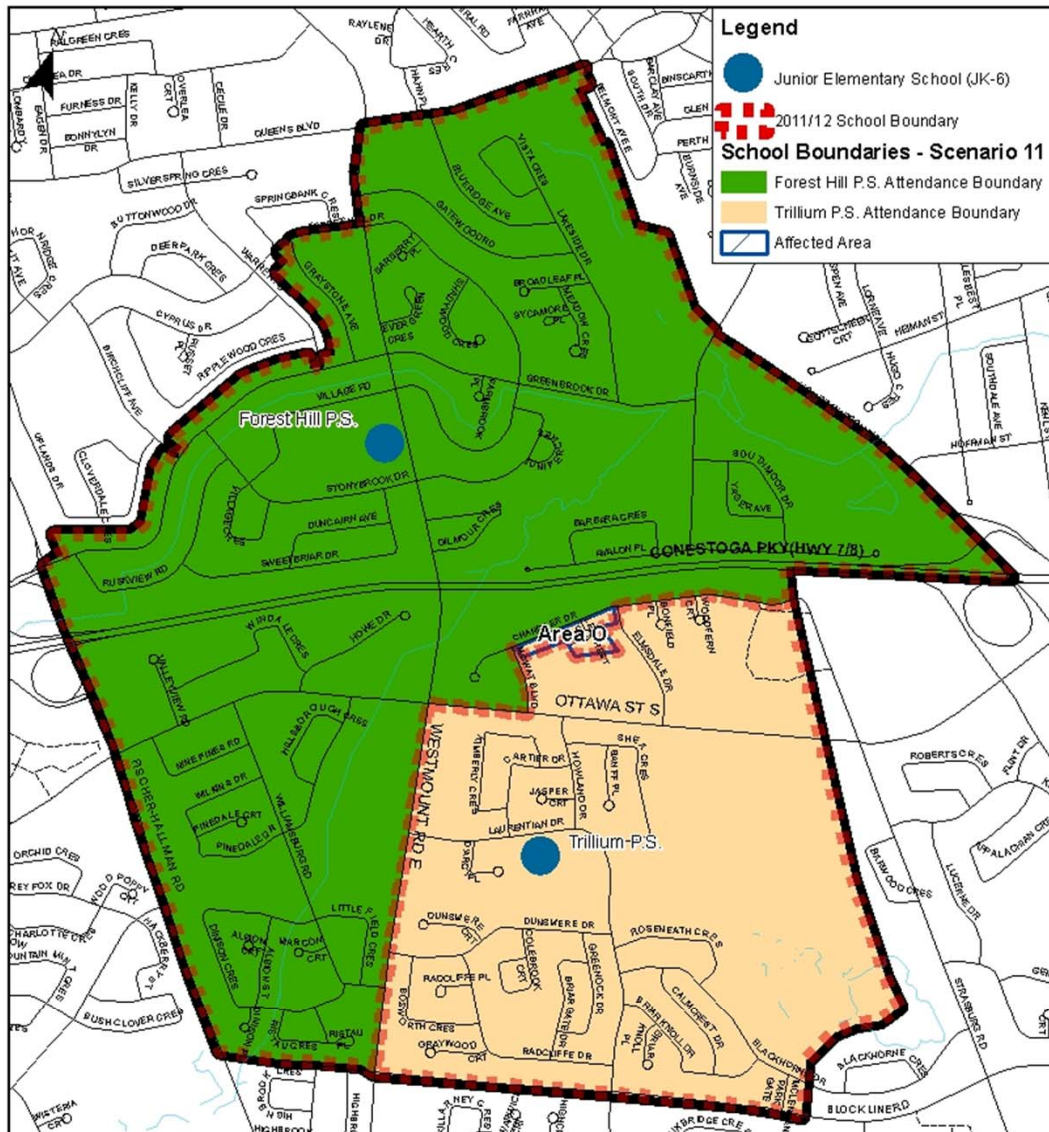
November 8, 2011

Trillium P.S. Proposed Capacity 2012/13 with FDK alterations

Room Type	Ministry Loading	Actual Loading	# Rooms	Ministry Capacity	Functional Capacity
Kindergarten	20	26	3	60	78
Classroom	23	23	7	161	138*
Spec. Ed	9	23	1	9	23
Resource	0	0	1	0	0
Total				230	239

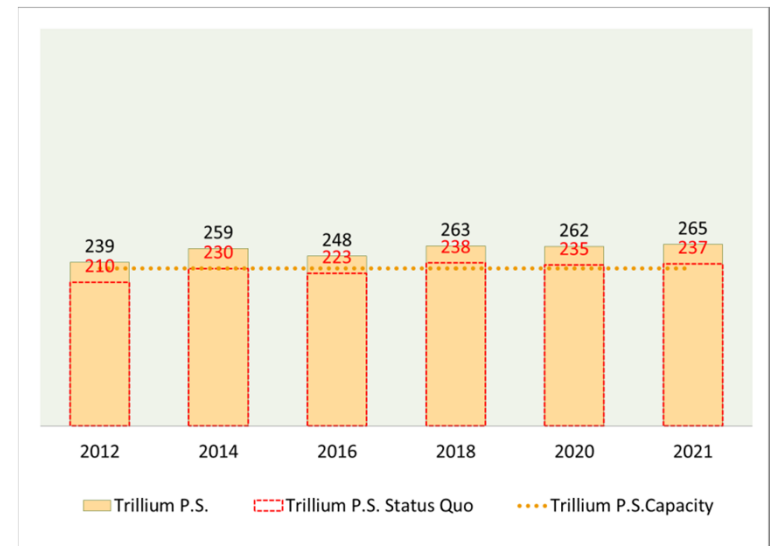
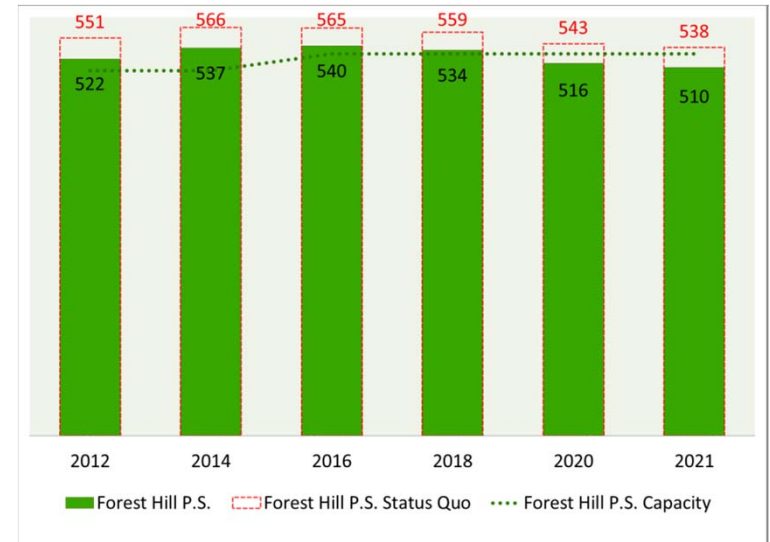
*One classroom used as a computer lab

Forest Hill/Trillium - Scenario 11



School	Capacity	2012	2014	2016	2018	2020	2021
Forest Hill P.S.	506-529	522	537	540	534	516	510
Trillium P.S.	230	239	259	248	263	262	265
Total	736-759	761	796	788	797	778	775

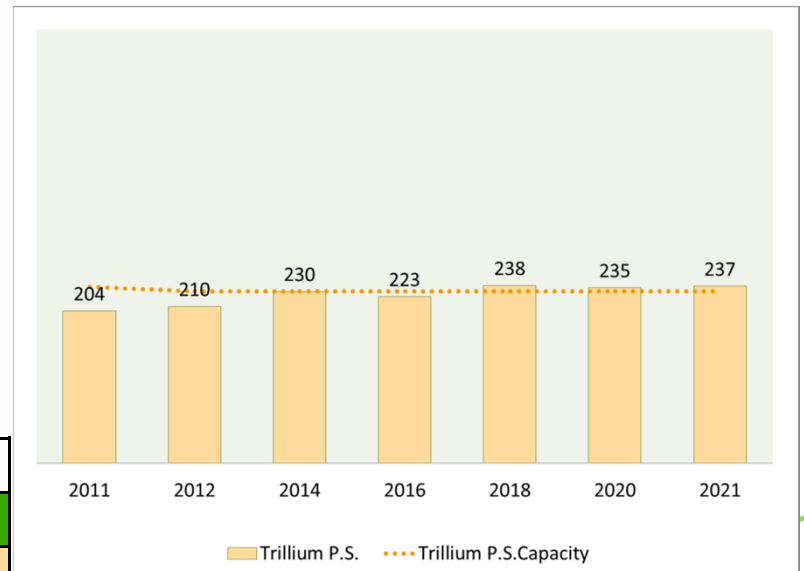
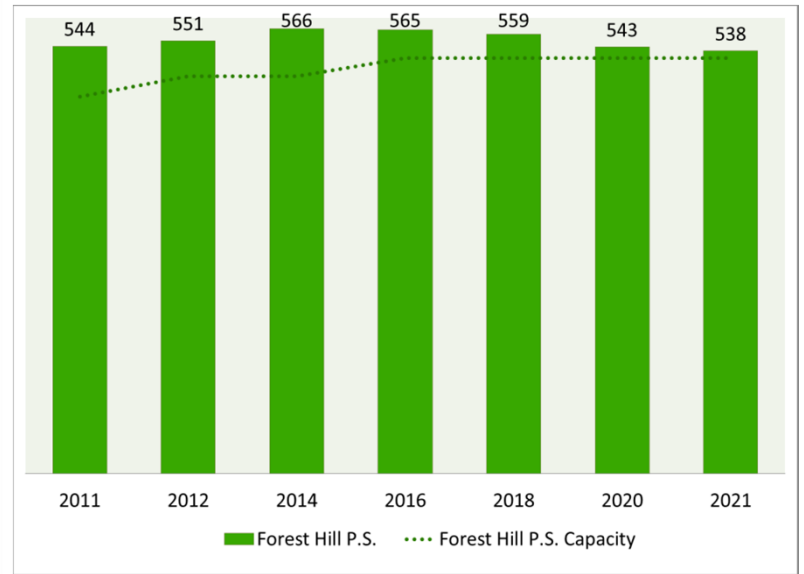
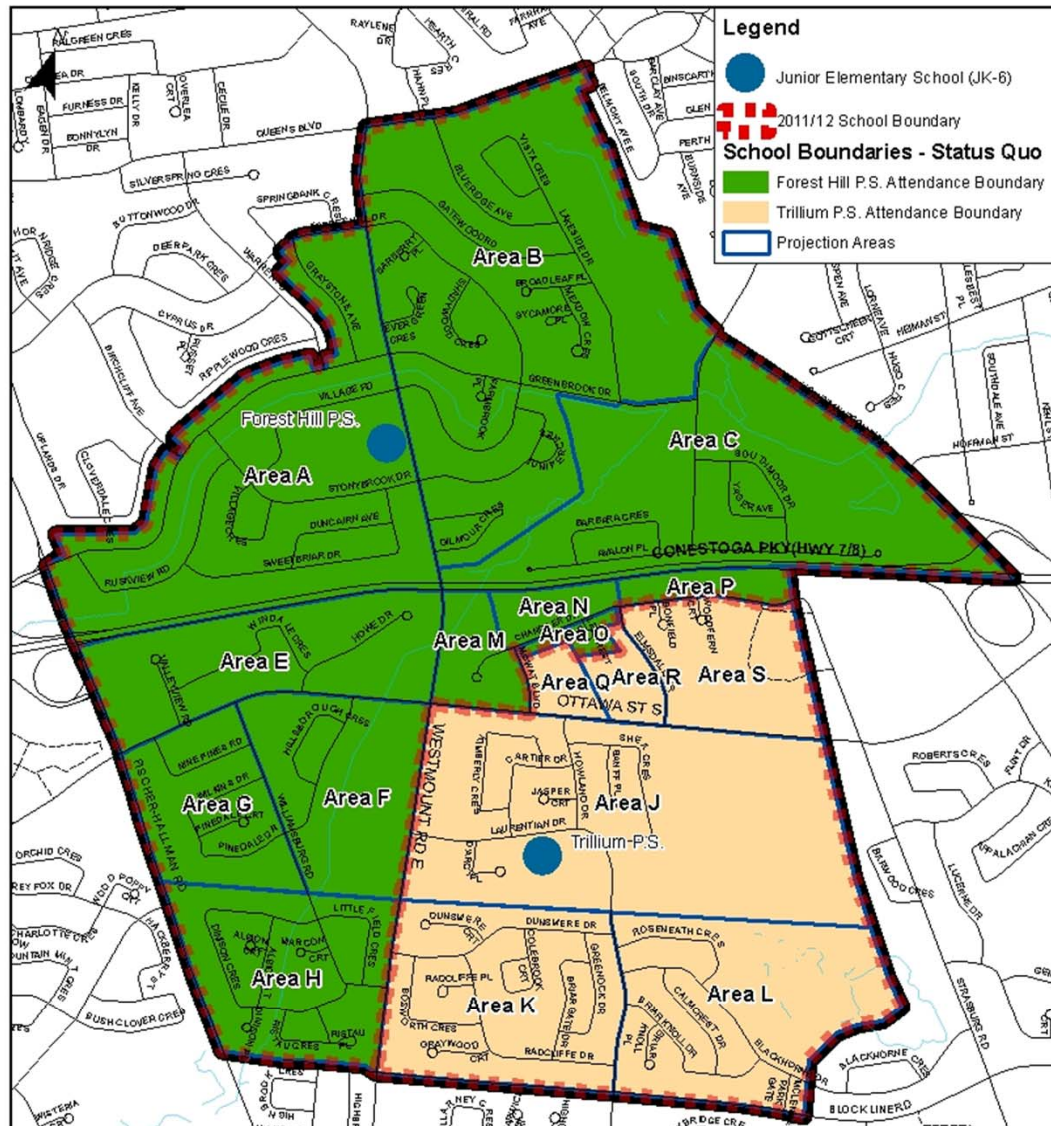
Scenario 11



Scenario 11

Objective	Meets?	Doesn't Meet?
Address future development plans and demographic shifts		
Balance enrolment to capacity using Board Policy 3002 – Elementary School Size and Configuration, as a guideline for school size		
Address the diverse needs of all students by creating a balance of enrolment that recognizes these needs		
Increase the number of students within a 'safe' walking distance to school		
Keep in mind the impact on the senior elementary and secondary school boundaries		
Minimize the impact on students where transitions are proposed		

Forest Hill/Trillium - Status Quo

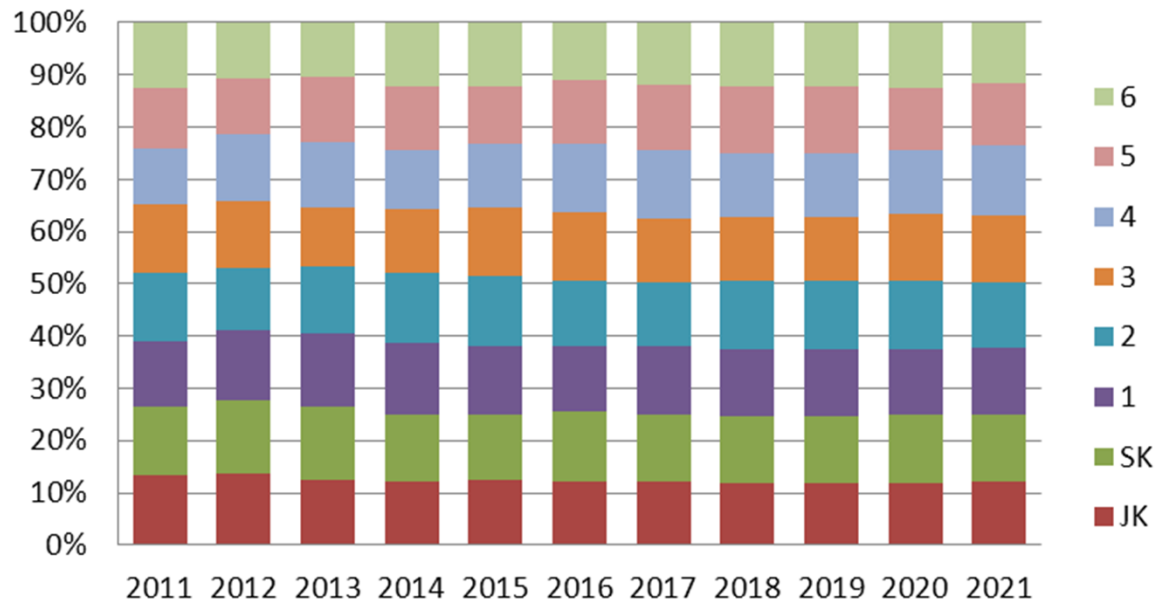


School	Capacity	2012	2014	2016	2018	2020	2021
Forest Hill P.S.	506-529	551	566	565	559	543	538
Trillium P.S.	230	210	230	223	238	235	237
Total	736-759	761	796	788	797	778	775

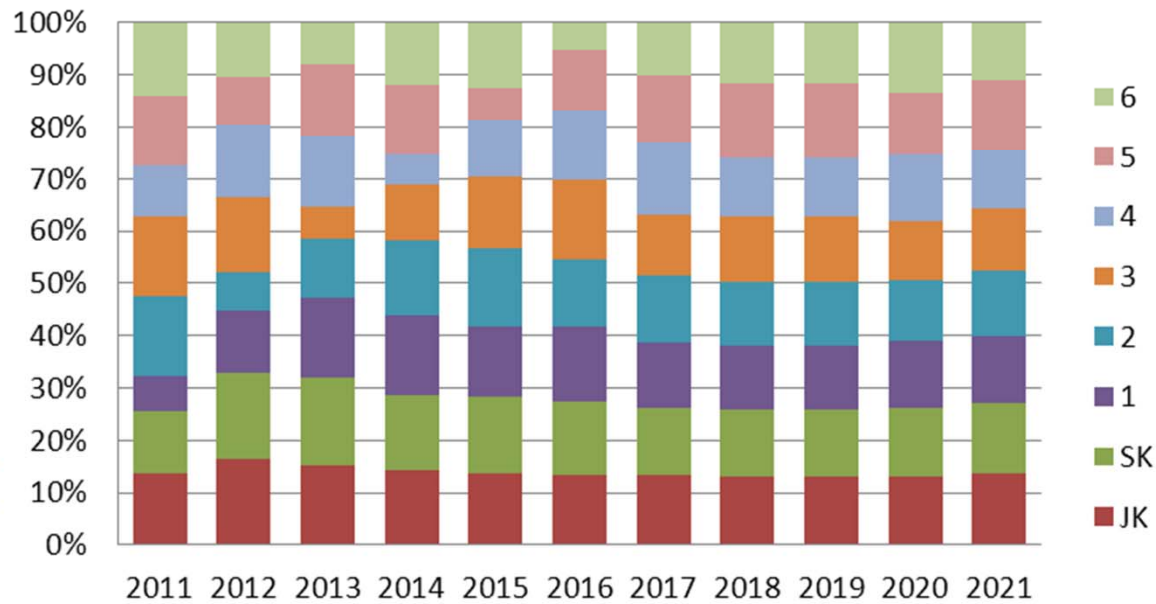
Status Quo

Status Quo

Forest Hill P.S. Status Quo Grade Profile Projections



Trillium P.S. Status Quo Grade Profile Projections



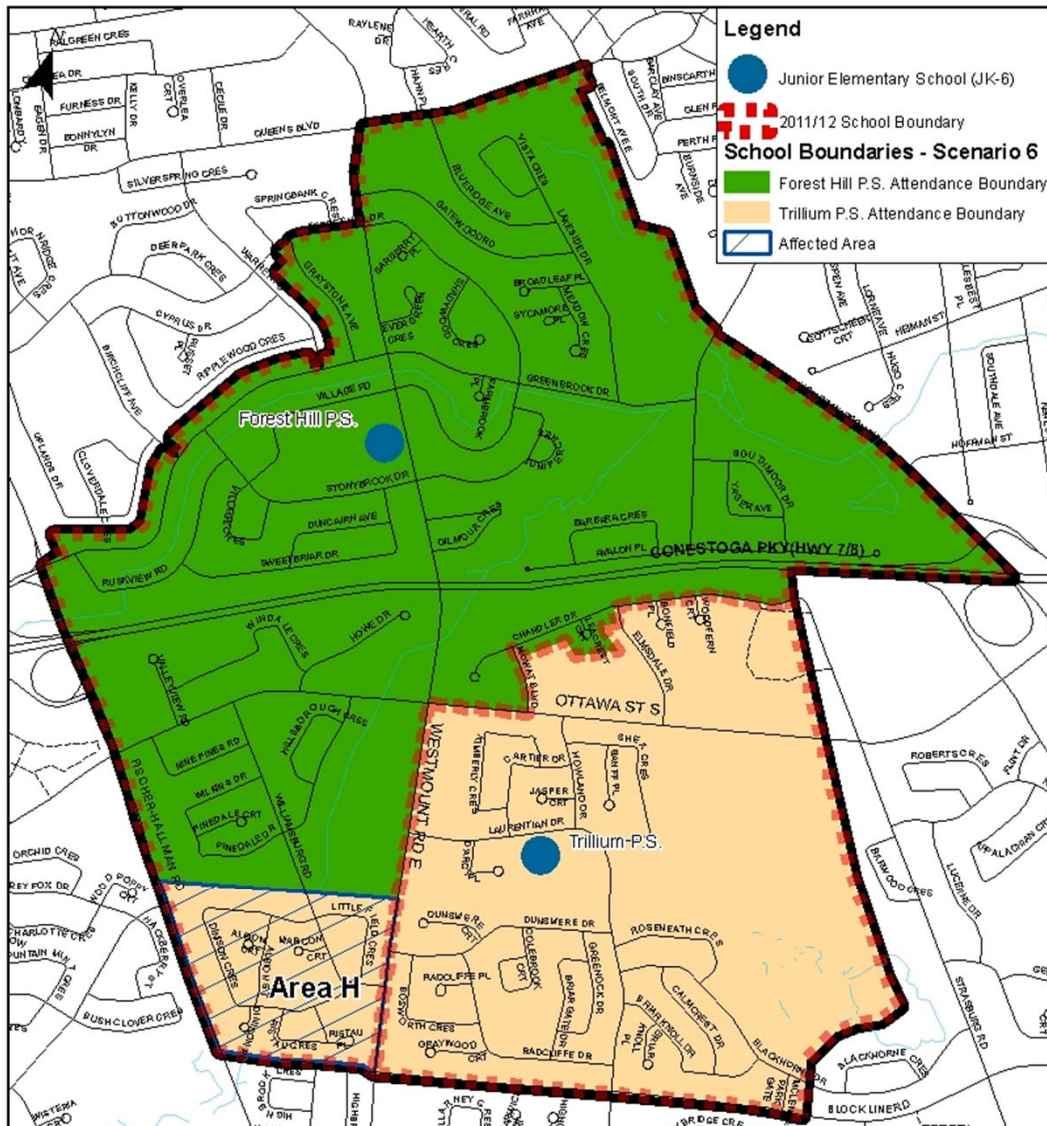
November 8, 2011

Status Quo

Objective	Meets?	Doesn't Meet?
Address future development plans and demographic shifts	N/A	N/A
Balance enrolment to capacity using Board Policy 3002 – Elementary School Size and Configuration, as a guideline for school size		X
Address the diverse needs of all students by creating a balance of enrolment that recognizes these needs		X
Increase the number of students within a 'safe' walking distance to school		X
Keep in mind the impact on the senior elementary and secondary school boundaries		X
Minimize the impact on students where transitions are proposed	X	

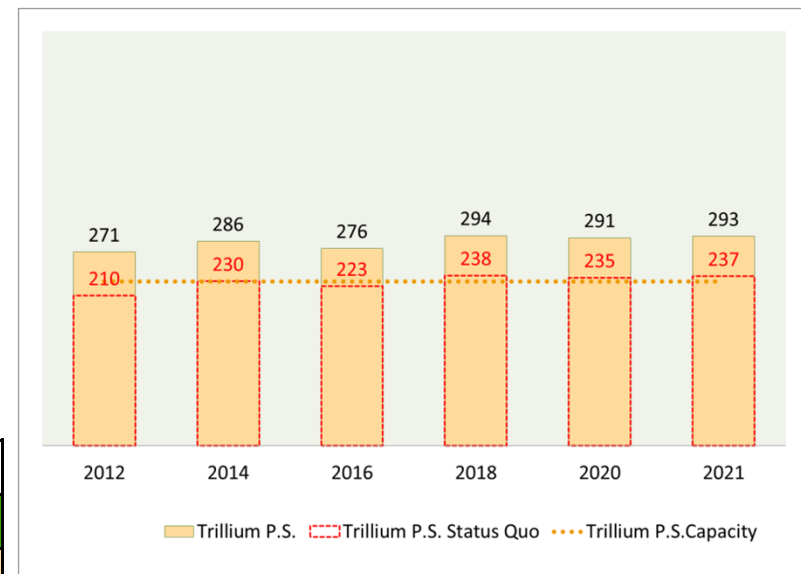
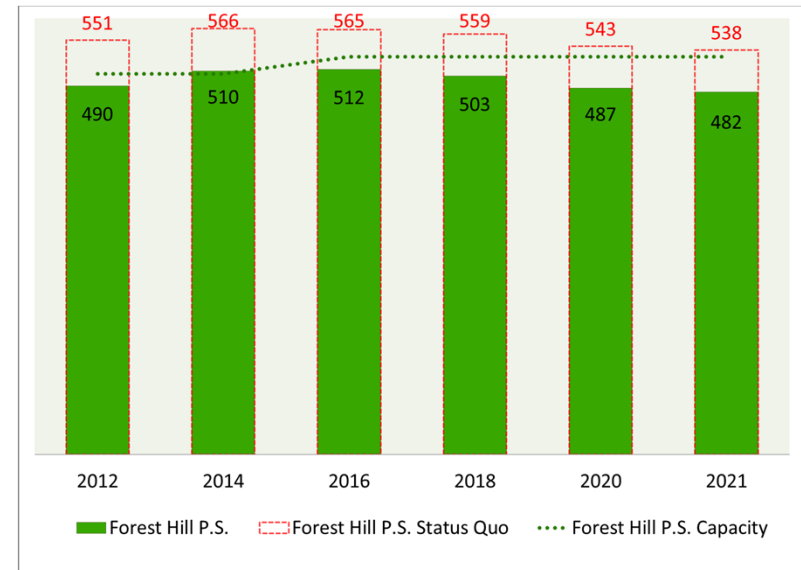


Forest Hill/Trillium - Scenario 6



School	Capacity	2012	2014	2016	2018	2020	2021
Forest Hill P.S.	506-529	490	510	512	503	487	482
Trillium P.S.	230	271	286	276	294	291	293
Total	736-759	761	796	788	797	778	775

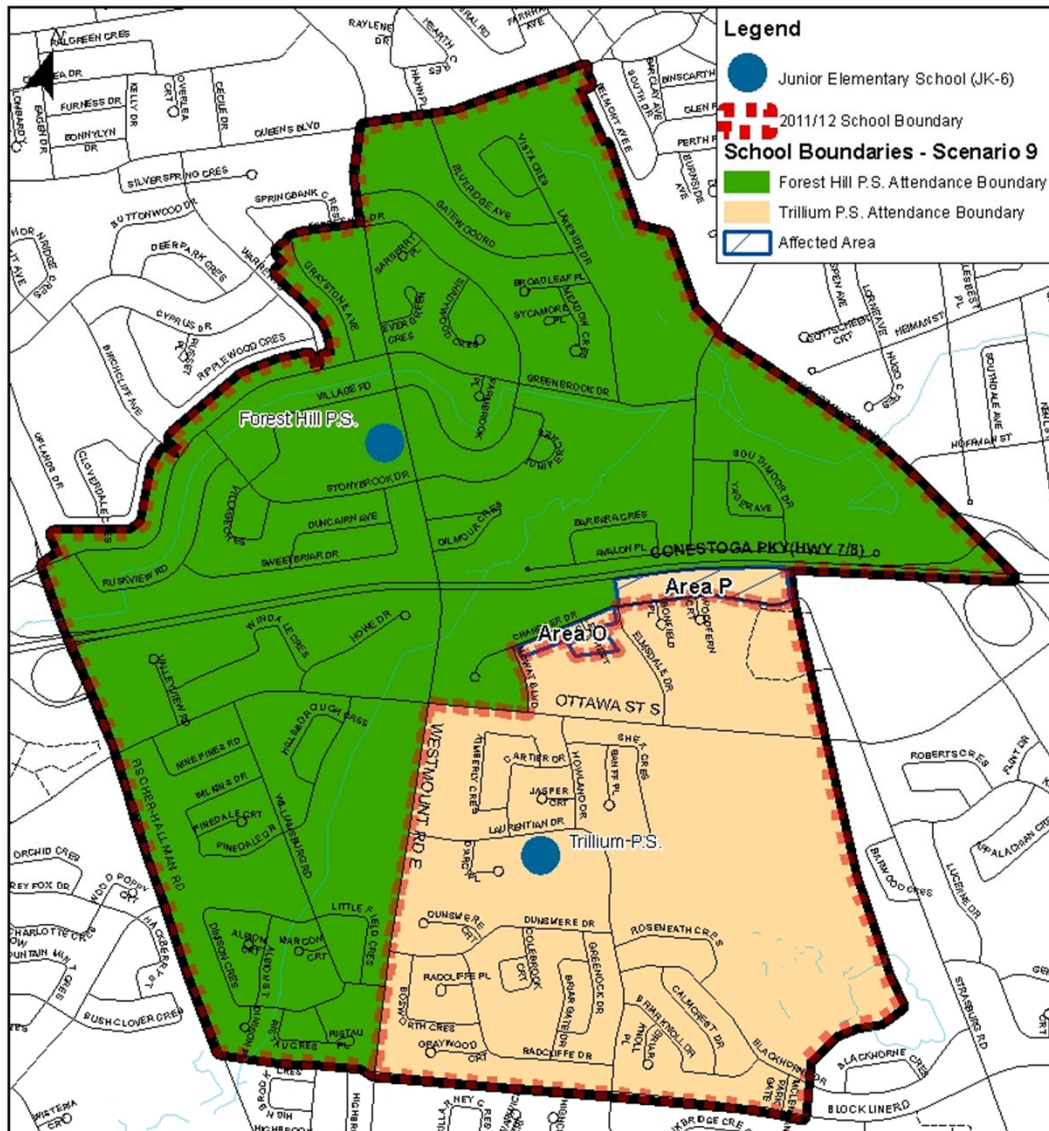
Scenario 6



Scenario 6

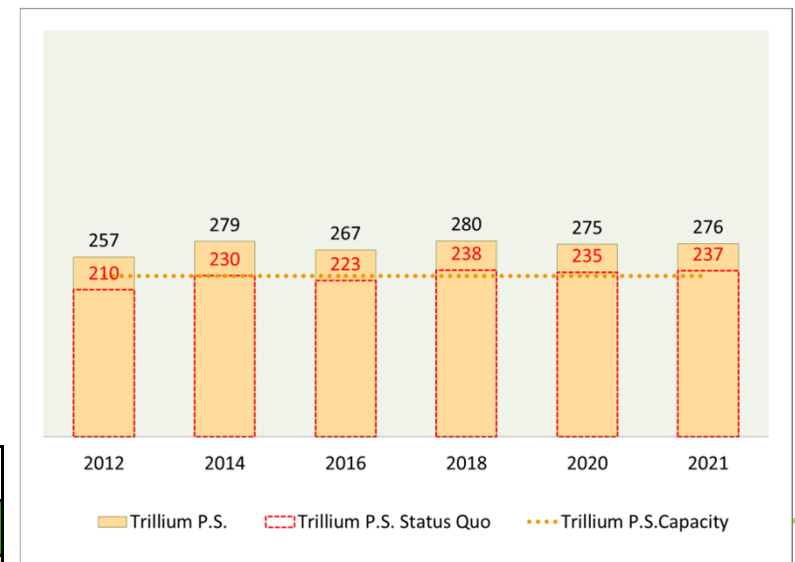
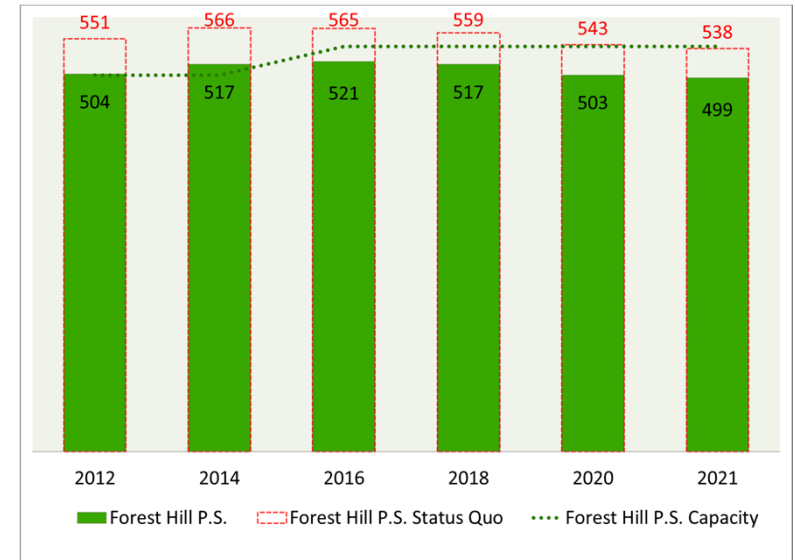
Objective	Meets?	Doesn't Meet?
Address future development plans and demographic shifts	N/A	N/A
Balance enrolment to capacity using Board Policy 3002 – Elementary School Size and Configuration, as a guideline for school size	X	X
Address the diverse needs of all students by creating a balance of enrolment that recognizes these needs	X	X
Increase the number of students within a 'safe' walking distance to school	X	
Keep in mind the impact on the senior elementary and secondary school boundaries	X	
Minimize the impact on students where transitions are proposed		X

Forest Hill/Trillium - Scenario 9



School	Capacity	2012	2014	2016	2018	2020	2021
Forest Hill P.S.	506-529	504	517	521	517	503	499
Trillium P.S.	230	257	279	267	280	275	276
Total	736-759	761	796	788	797	778	775

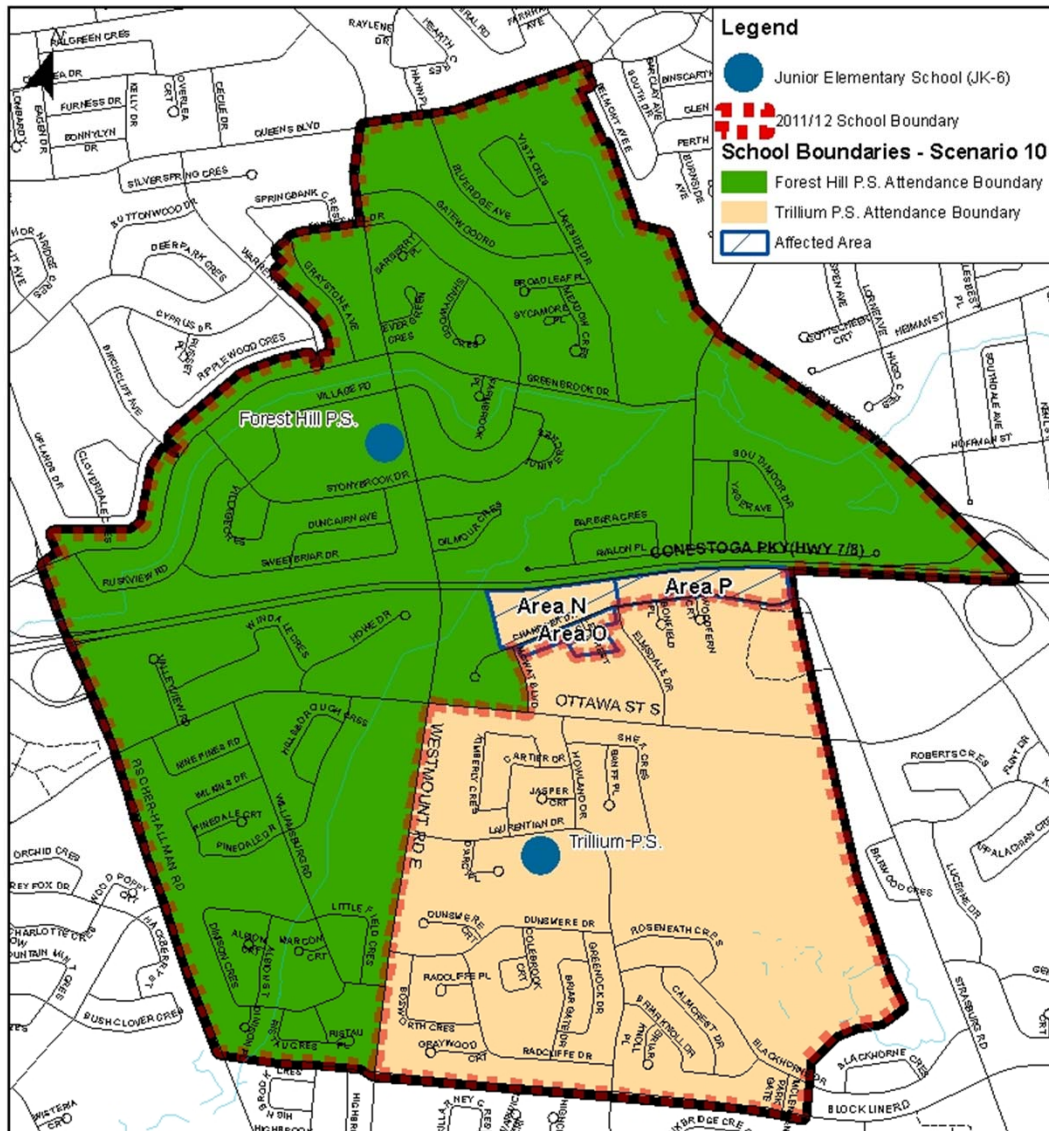
Scenario 9



Scenario 9

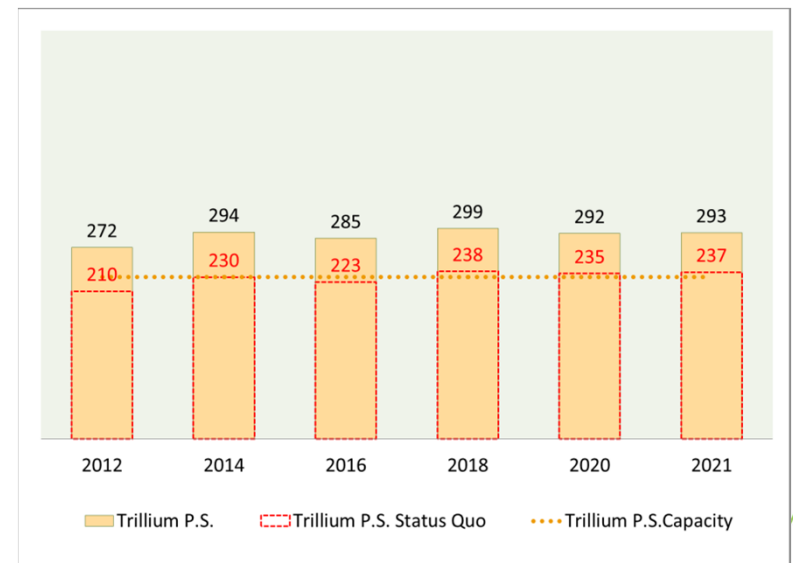
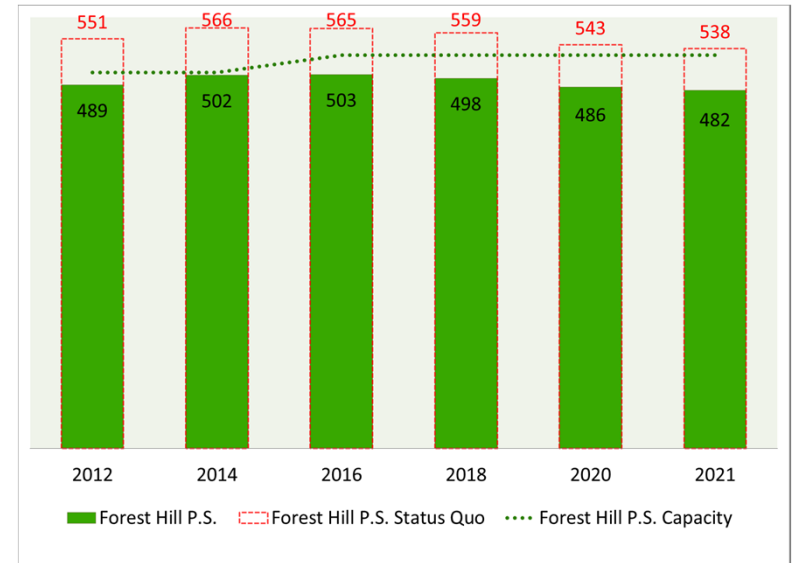
Objective	Meets?	Doesn't Meet?
Address future development plans and demographic shifts	N/A	N/A
Balance enrolment to capacity using Board Policy 3002 – Elementary School Size and Configuration, as a guideline for school size	X	X
Address the diverse needs of all students by creating a balance of enrolment that recognizes these needs	X	
Increase the number of students within a 'safe' walking distance to school	X	
Keep in mind the impact on the senior elementary and secondary school boundaries	X	
Minimize the impact on students where transitions are proposed	X	

Forest Hill/Trillium - Scenario 10



School	Capacity	2012	2014	2016	2018	2020	2021
Forest Hill P.S.	506-529	489	502	503	498	486	482
Trillium P.S.	230	272	294	285	299	292	293
Total	736-759	761	796	788	797	778	775

Scenario 10



Scenario 10

Objective	Meets?	Doesn't Meet?
Address future development plans and demographic shifts	N/A	N/A
Balance enrolment to capacity using Board Policy 3002 – Elementary School Size and Configuration, as a guideline for school size		X
Address the diverse needs of all students by creating a balance of enrolment that recognizes these needs	X	
Increase the number of students within a 'safe' walking distance to school	X	
Keep in mind the impact on the senior elementary and secondary school boundaries	X	
Minimize the impact on students where transitions are proposed		X

Forest Hill P.S. Admissions

Admission Type	# Students 2009/10	# Students 2010/11	# Students 2011/12
Beginner (JK/SK)	78	57	71
From a Private School in Ontario	3	1	2
From Country outside of Canada	12	29	21
From Home Schooling			2
From Other School Board	25	18	17
From Province outside of Ontario	1	6	2
From This School Board	48	45	45
Re-entering student after a period of non-attendance	8	6	
<i>Total (without Beginner)</i>	97	105	89
Grand Total	175	162	160



Forest Hill P.S. Enrolment Register 2010/11

Month	Admissions		Transfers		Retirements	Net Last Day
	Internal	External	Internal	External		
September	392	111	0	1	2	500
October	1	7	0	4	0	504
November	0	6	0	3	0	507
December	0	5	0	2	0	510
January	0	12	0	10	2	510
February	0	6	0	0	3	513
March	0	5	0	4	1	513
April	0	2	0	0	0	515
May	0	3	0	5	1	512
June	0	5	0	0	1	516
Total	393	162	0	29	10	

Note: All transfers were recorded as external; however, some may be internal



Forest Hill P.S. Enrolment Register 2011/12

Month	Admissions		Transfers		Retirements	Net Last Day
	Internal	External	Internal	External		
September	408	139	0	0	0	547
October	0	10	3	0	2	552
November	0	10	4	0	1	557
Total	408	159	7	0	3	



Trillium P.S. Admissions

Admission Type	# Students 2009/10	# Students 2010/11	# Students 2011/12
Beginner (JK/SK)	15	22	29
From a Private School in Ontario			
From Country outside of Canada	2		4
From Home Schooling			
From Other School Board	2	11	10
From Province outside of Ontario	1	1	
From This School Board	11	9	10
Re-entering student after a period of non-attendance	3		
Total (without Beginner)	19	21	24
Grand Total	34	43	53

Trillium P.S. Enrolment Register 2010/11

Month	Admissions		Transfers		Retirements	Net Last Day
	Internal	External	Internal	External		
September	154	33	0	0	0	187
October	0	0	0	1	0	186
November	0	4	0	1	0	189
December	0	0	0	0	0	189
January	0	1	0	0	0	190
February	0	1	0	1	0	190
March	0	3	0	0	1	192
April	0	0	0	0	0	192
May	0	0	0	0	1	191
June	0	1	0	0	0	192
Total	154	43	0	3	2	

Note: All transfers were recorded as external; however, some may be internal



Trillium P.S. Enrolment Register 2011/12

Month	Admissions		Transfers		Retirements	Net Last Day
	Internal	External	Internal	External		
September	153	49				202
October		2				203
November		2		1		205
Total	86	44		1		



Future Meeting Dates

- **Working Group Meeting #6**
 - Wednesday November 16, 2011
 - 5:00 – 6:30 pm, Forest Hill P.S. Library
- **Public Meeting #2 (TENTATIVE)**
 - Wednesday November 30, 2011
 - 7:00 pm, Forest Hill P.S. Gymnasium
- **Working Group Meeting #7**
 - Tuesday December 6, 2011
 - 5:00 – 6:30 pm, Trillium P.S. Library



Contact Information

- Website: www.wrdsb.ca
 - » About Us>Planning Department>Boundary Studies
 - » Forest Hill-Trillium Elementary Schools Boundary Study
- E-mail: boundaryfeedback@wrdsb.on.ca
- Phone: 519-570-0003 ext. 4419

