

Woolwich/Wellesley Townships

Elementary Schools Pupil Accommodation Review **Accommodation Review Committee Meeting #10**

March 6, 2012

Three Bridges P.S. Library 6:30 – 8:00
pm



Waterloo Region
District School Board

Agenda

- 1. Welcome**
- 2. ARC Meeting # 9 – Draft Minutes**
- 3. Draft Issues/Objectives**
- 4. Additional Requested Information**
- 5. Scenario Discussion**
- 6. Future Meeting Dates/Times**



3. Draft Objectives

1. **Ensure equitable student access to a community school by having defined attendance area boundaries that relate geographically to the community it is located in.**
2. **Where possible organize school attendance boundaries to minimize distance to school (time on bus).**
3. **Address student transitions where changes proposed.**
4. **Have regard for Board policy 3002; Elementary School Size and Configuration, recognizing the challenges of rural areas.**



3. Draft Objectives

5. **Support the efficient use of capital and operating resources through the consideration of facility condition, accessibility, and equitable access to educational amenities.**
6. **Maximize the number of students accommodated in permanent capacity**
7. **Maximize the use of existing capacity within facilities**
8. **Recognize the unique needs of communities served by different schools through the reasonable accommodation of cultural differences.**



4. Additional Information - Facilities

Gym space benchmarking

School	OTG Capacity	Portapak Capacity	Enrolment (2010)	Gym ft2	Gym ft2/OTG	Ranking (ft2/OTG)	Gym ft2/Enrolment	Ranking (ft2/Enrolment)
Empire PS	279	115	491	1923	6.89	15	3.92	1
Wilson Ave. PS	422	-	412	2013	4.89	1	4.98	3
St. Jacobs PS	348	-	319	2376	6.83	14	7.45	29
Linwood PS	469	-	510	3712	7.28	17	7.91	33
Floradale PS	322	-	251	2818	8.75	33	11.23	68
Three Bridges PS	92	-	83	1659	9.61	96	18.03	100
Cedar Creek PS	256	138	422	6268	24.48	100	14.85	88



4. Additional Information

Gym space benchmarking JK-8 schools

SCHOOL NAME	ORGANIZATION	Oct 2010 Enrolment	OTG	GYM (ft2)	Gym Programming spaces	Gym ft2 / Student Enrolment	Gym ft2/OTG	Gym ft2/ Student Enrolment (All Schools)	Gym ft2/OTG Ranking (All Schools)	Gym ft2/ Student Enrolment Ranking (JK-8)	Gym ft2/OTG Ranking (JK-8)
CLEMENS MILL	JK-8	796	472	4622	2	5.81	9.79	8.00	37	1	9
LESTER B. PEARSON	JK-8	736	607	4830	2	6.56	7.96	16.00	23	2	4
LAURELWOOD	JK-8	717	366	4848	2	6.76	13.25	19.00	83	3	16
CONESTOGO	JK-8	338	224	2415	1	7.14	10.78	26.00	53	4	13
EDNA STAEBLER	JK-8	714	639	5286	2	7.40	8.27	28.00	29	5	7
ST. JACOBS	JK-8	319	348	2376	1	7.45	6.83	29.00	14	6	1
LINWOOD	JK-8	469	510	3712	2	7.91	7.28	33.00	17	7	2
WELLESLEY	JK-8	643	635	5232	2	8.14	8.24	37.00	28	8	6
BADEN	JK-8	579	575	4724	2	8.16	8.22	38.00	27	9	5
WOODLAND PARK	JK-8	563	463	4644	2	8.25	10.03	39.00	41	10	11
STEWART AVENUE	JK-8	571	483	4909	2	8.60	10.16	42.00	45	11	12
HESPELER	JK-8	579	686	5024	2	8.68	7.32	44.00	18	12	3
FOREST GLEN	JK-8	543	443	4817	2	8.87	10.87	48.00	56	13	14
SILVERHEIGHTS	JK-8	649	418	6634	2	10.22	15.87	54.00	90	14	18
NORTHLAKE WOODS	JK-8	477	492	4900	2	10.27	9.96	55.00	39	15	10
FLORADALE	JK-8	251	322	2818	1	11.23	8.75	68.00	33	16	8
A. R. KAUFMAN	JK-8	438	440	5085	2	11.61	11.56	72.00	67	17	15
BRESLAU	JK-8	483	325	5800	2	12.01	17.85	73.00	95	18	19
CEDAR CREEK	JK-8	422	256	6268	2	14.85	24.48	88.00	100	19	21
LINCOLN HEIGHTS	JK-8	330	409	5601	2	16.97	13.69	97.00	85	20	17
THREE BRIDGES	01-8	83	92	1659	1	19.99	18.03	100.00	96	21	20



4. Additional Information - Facilities

Library Assessments

Based on criteria from *Information Studies: Standards for School Library Programs in Canada*. (Canadian Association for School Libraries, 2003)

- Overall space
- Instructional Areas
- Instructional Computers
- Staff Work Areas
- Seminar rooms
- Shelving
- Summary



4. Additional Information

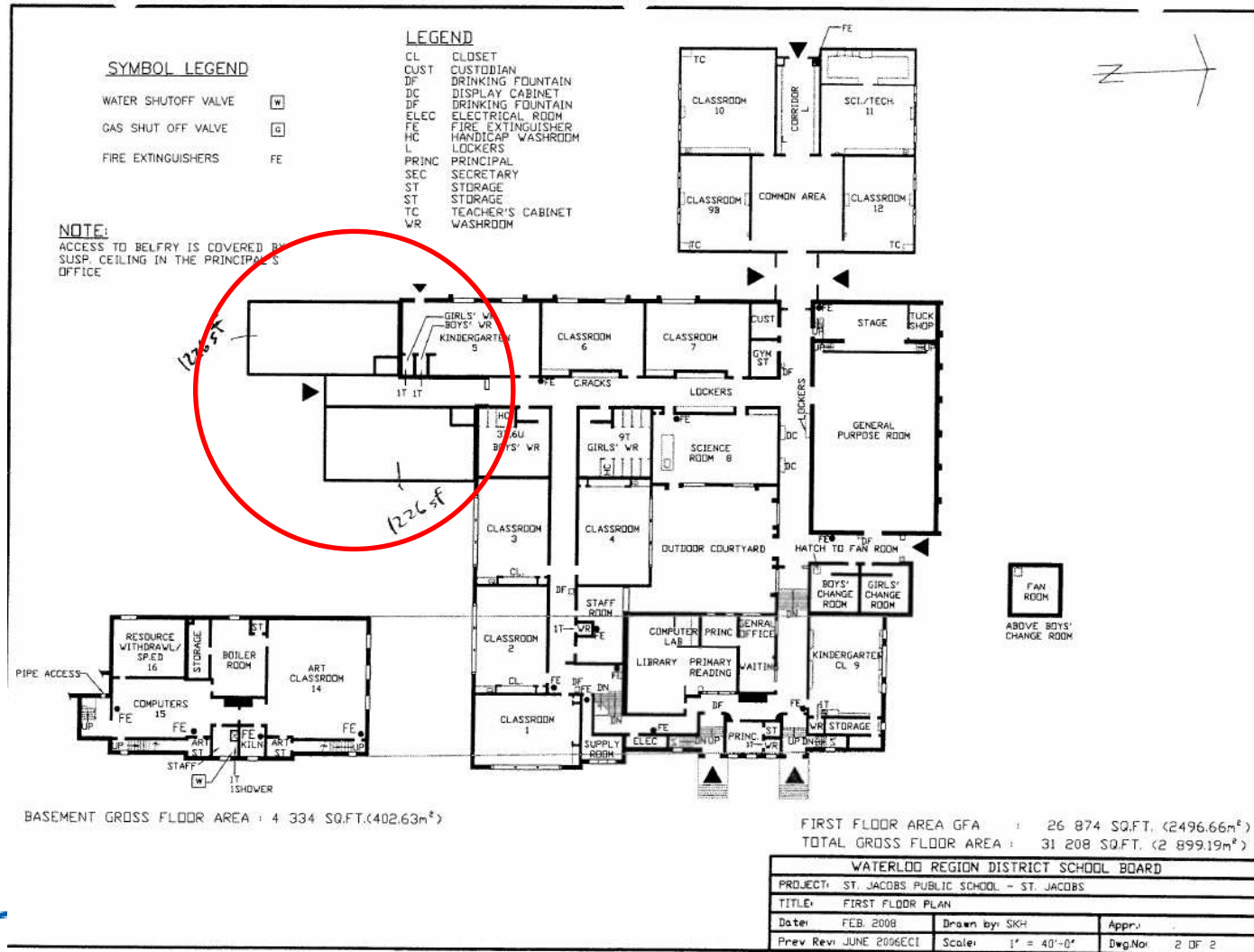
Library Assessments

School	Score (2006)	Subsequent Significant Changes
Alison Park	12	School in temporary location, closing 2012
Ayr	13	
Blair Road	18	
Bridgeport	12	Library moved to new, renovated location. – significant improvement
Chalmers	17	
Conestogo	17	
Courtland	17	Some minor renovations have improved the facility
Crestview	18	
Dickson	12	
Floradale	15	Old school closed – new school and library.
Grand View C	17	Old school will close June 2012 – new school and library.
Grandview NH	12	Library has been renovated – significant improvement.
Hillcrest	19	

Hillcrest	19	
JF Carmichael	17	
John Mahood	19	
MacKenzie King	17	
Manchester	14	
Meadowlane	19	
New Dundee	14	
Prueter	19	
Queen Elizabeth	16	
Riverside	13	
Rockway	17	
Ryerson	16	Old school closed New school and library.
	19	
St. Jacob's	18	
Three Bridges	13	Library moved to new location in school. Some improvement.
Westmount	13	Computer lab moving out of library & some renos, March 2012.
Wilson Ave	19	Some renovations have improved facility.
Winston Churchill	18	

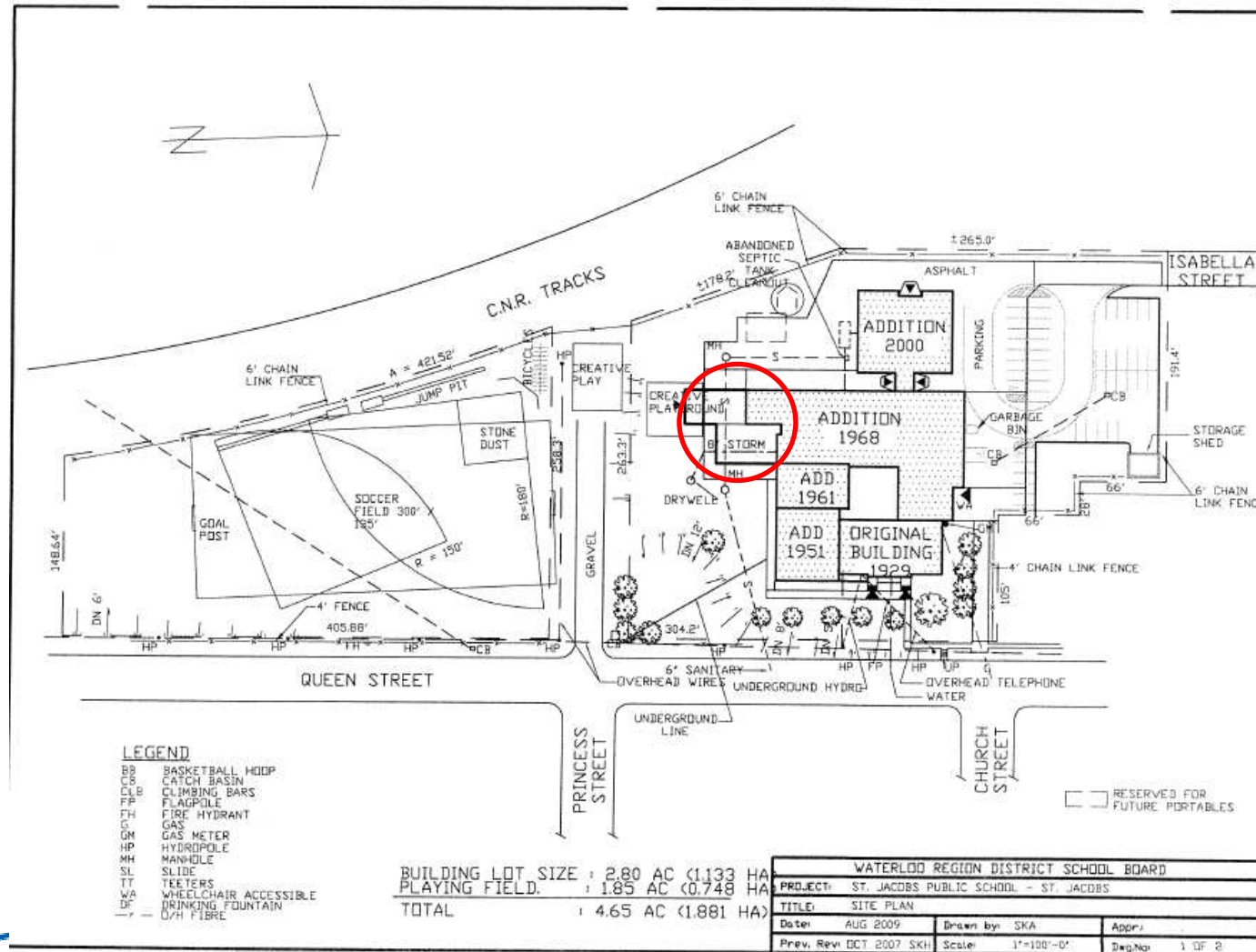
4. Additional Information

St. Jacobs PS, and construction



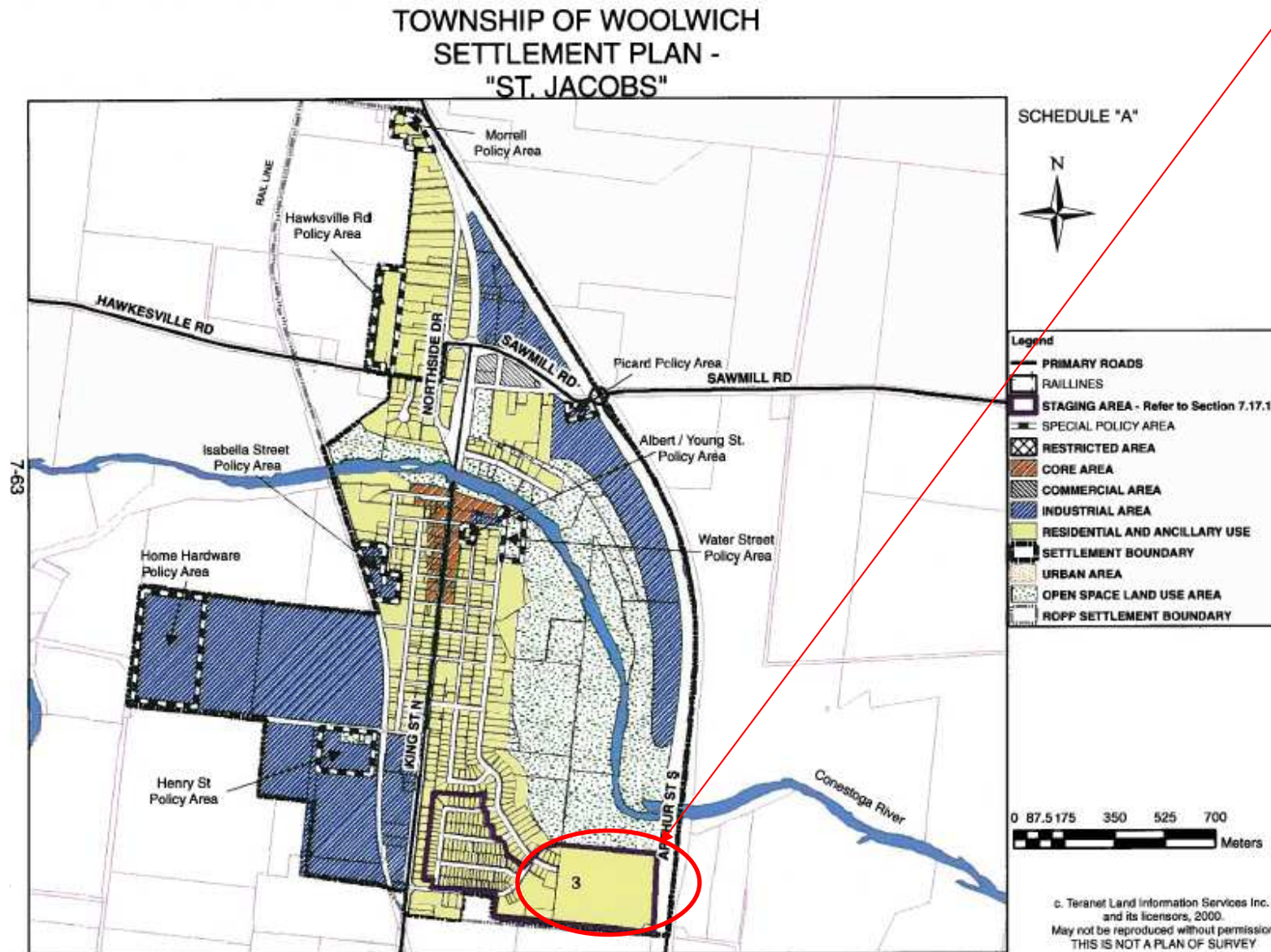
4. Additional Information

St. Jacobs PS, and construction



4. Additional Information

St. Jacobs additional development



ValleyView lands

- 144-154 residential units proposed
- Last remaining greenfield development in St. Jacobs Settlement area
- Timing unclear
- Approximate student yield 45 students (JK-8)

4. Additional Information

Revised projections – Area K(S)

Woolwich/Wellesley Townships Total Enrolment Projections By Area Summary

AREA	2011			2012			2013			2014			2015			2016			2017			2018			2019			2020		
	JK-6 Total	7-8 Total	Total JK-8	JK-6 Total	7-8 Total	Total JK-8	JK-6 Total	7-8 Total	Total JK-8	JK-6 Total	7-8 Total	Total JK-8	JK-6 Total	7-8 Total	Total JK-8	JK-6 Total	7-8 Total	Total JK-8	JK-6 Total	7-8 Total	Total JK-8	JK-6 Total	7-8 Total	Total JK-8	JK-6 Total	7-8 Total	Total JK-8			
A	48	13	59	47	13	60	47	14	61	43	14	57	43	14	57	43	16	59	47	14	61	47	13	60	48	15	63	45	15	60
B	44	13	57	44	9	53	39	14	53	40	14	54	38	13	51	39	13	52	38	12	50	43	10	53	46	6	52	50	7	57
C	22	4	26	22	5	27	21	7	28	24	5	29	23	6	29	23	8	31	22	7	29	23	6	29	23	5	28	23	6	29
D	169	50	219	168	47	215	173	42	215	177	40	217	184	41	225	187	40	227	193	39	232	193	42	235	193	48	241	194	47	241
E	80	31	111	81	28	109	83	21	104	84	21	105	81	26	107	84	25	109	89	19	108	93	18	111	92	21	113	90	25	115
E1*	28	11	37	29	8	37	31	5	36	33	6	39	34	7	41	35	8	43	37	7	44	37	8	45	37	10	47	37	10	47
F	119	26	145	117	23	140	112	29	141	108	32	138	105	28	133	103	28	131	105	28	133	102	28	130	103	30	133	109	25	134
F1*	29	11	40	33	9	42	33	7	40	36	10	46	41	6	47	40	7	47	41	8	49	39	9	48	40	9	49	38	9	47
G(S)	8	1	9	9	0	9	8	1	9	7	2	9	7	1	8	6	1	7	6	3	9	5	4	9	4	3	7	6	1	7
G(T)	14	5	19	15	5	20	14	6	20	14	6	20	16	4	20	17	4	21	18	4	22	16	5	21	15	6	21	17	5	22
H(S)	64	21	85	59	23	82	59	19	78	59	14	73	55	19	74	57	18	75	53	19	72	55	19	74	58	13	71	60	15	75
H(T)	2	0	2	3	0	3	2	1	3	2	1	3	3	0	3	2	1	3	2	1	3	2	1	3	2	1	3	2	0	2
I(S)	5	2	7	6	2	8	4	3	7	3	3	6	5	2	7	5	2	7	1	4	5	1	4	5	1	3	4	1	2	3
I(T)	12	7	19	13	8	21	16	5	21	15	6	21	16	8	24	17	6	23	17	5	22	17	7	24	15	10	25	14	8	22
J(S)	8	0	8	9	0	9	8	2	10	8	2	10	6	1	7	5	2	7	4	3	7	4	3	7	4	1	5	3	1	4
J(T)	14	6	20	14	8	22	17	3	20	17	3	20	17	4	21	16	6	22	15	7	22	18	5	23	16	6	22	16	6	22
K(S)	151	28	177	151	32	183	143	46	189	156	48	204	162	47	209	171	52	223	177	39	216	173	41	214	171	51	222	169	50	219
K(T)	2	1	3	2	1	3	3	0	3	3	0	3	2	1	3	2	2	4	2	1	3	2	0	2	2	1	3	2	1	3
L(S)	24	8	32	24	4	28	23	5	28	21	7	28	22	5	27	22	3	25	22	6	28	22	8	30	26	4	30	25	4	29
L(T)	5	2	7	4	3	7	4	2	6	4	2	6	2	3	5	3	2	5	3	0	3	4	0	4	3	1	4	2	2	4
FLO OOB	84	28	112	80	31	111	77	31	108	79	25	104	78	23	101	73	30	103	81	22	103	89	13	101	91	20	111	94	24	118
LIN OOB	11	3	14	12	3	15	9	5	14	10	4	14	10	1	11	11	1	12	10	2	12	9	4	13	8	4	12	7	4	11
STJ OOB	8	1	9	9	1	10	7	3	10	7	4	11	7	2	9	8	2	10	10	1	11	10	1	11	10	2	12	9	2	11
TBR OOB	6	4	10	7	4	11	10	1	11	12	1	13	12	2	14	12	1	13	11	3	14	11	5	16	11	5	16	9	6	15

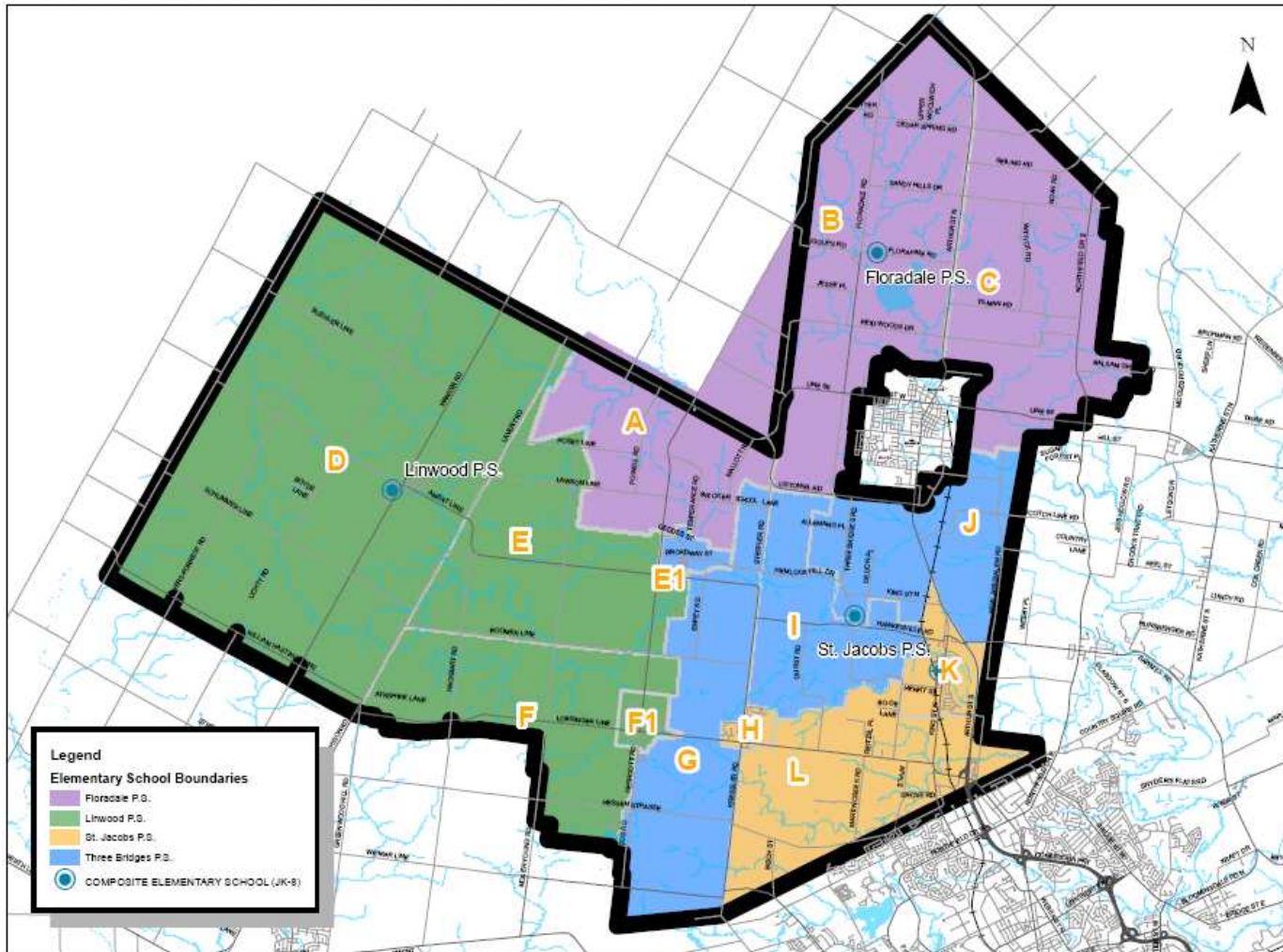
* Areas E1, F1 are subsets of Areas E, F

modified Mar 6/2012



4. New Scenario Discussion

Woolwich and Wellesley Townships Review: Scenario 8



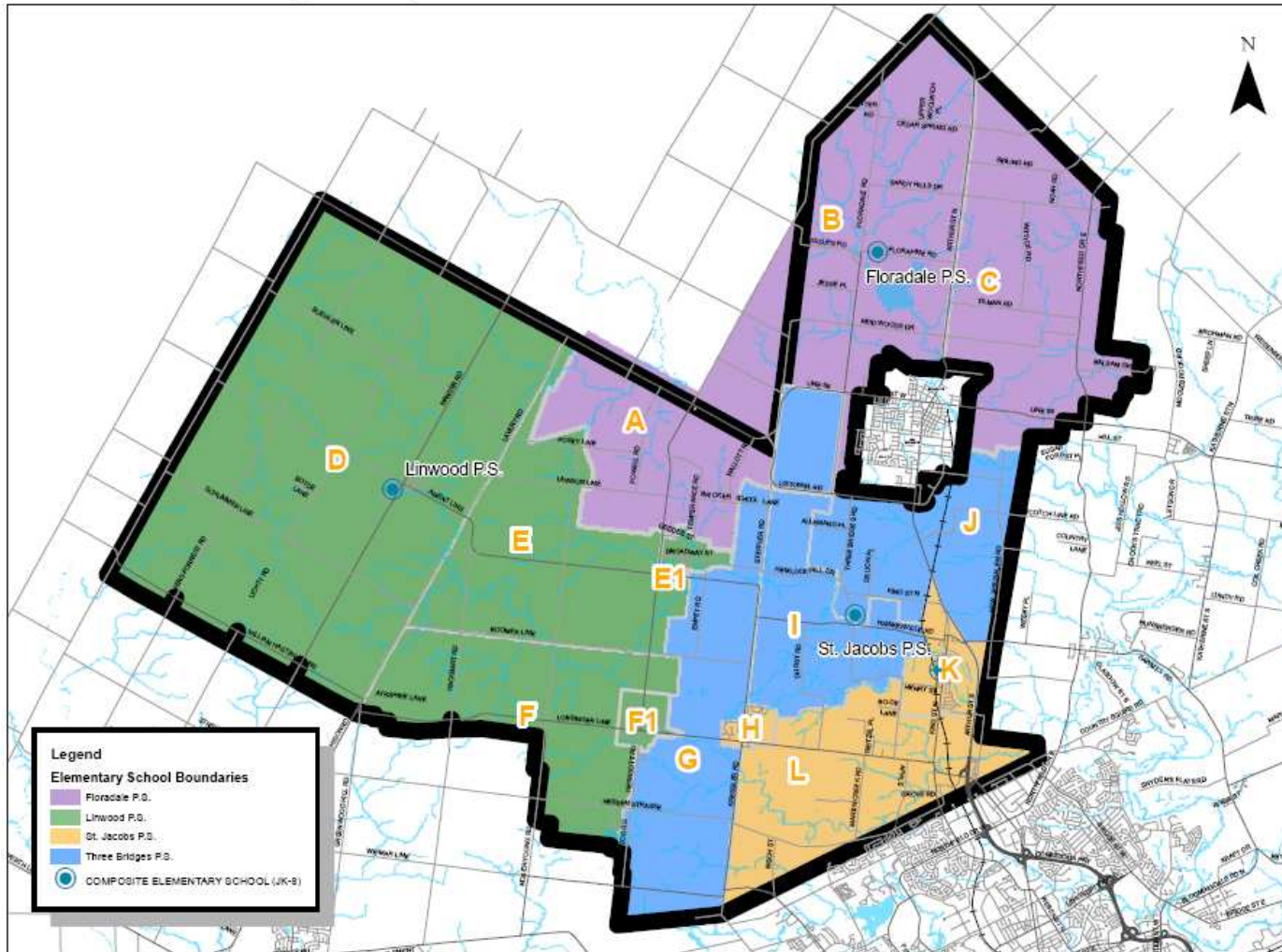
- Details
- Defined Boundary for Three Bridges PS (gets Areas G, I, J, E1)
- St. Jacobs PS gets Areas H, K, L.
- All else remains same

Scenario 8

School	Built Capacity	Capacity with FDK	2012			2014			2016			2018			2020		
			JK-6	7-8	Total	JK-6	7-8	Total	JK-6	7-8	Total	JK-6	7-8	Total	JK-6	7-8	Total
Floradale P.S.	322	322	189	56	245	182	58	240	177	65	242	201	41	242	212	52	264
Linwood P.S.	510	519	333	89	422	337	83	420	347	83	430	360	81	441	363	91	454
St. Jacobs P.S.	348	?	235	57	292	247	71	318	267	76	343	280	69	349	289	74	363
Three Bridges P.S.	92	92	97	33	130	108	25	133	112	30	142	109	40	149	103	39	142
Total	1180		854	235	1089	874	237	1111	903	254	1157	950	231	1181	967	256	1223

4. New Scenario Discussion

Woolwich and Wellesley Townships Review: Scenario 9



- Details
- Defined Boundary for Three Bridges PS (gets Areas G, I, J, E1, and part of B)
- St. Jacobs PS gets Areas H, K, L.
- All else remains same

Scenario 9

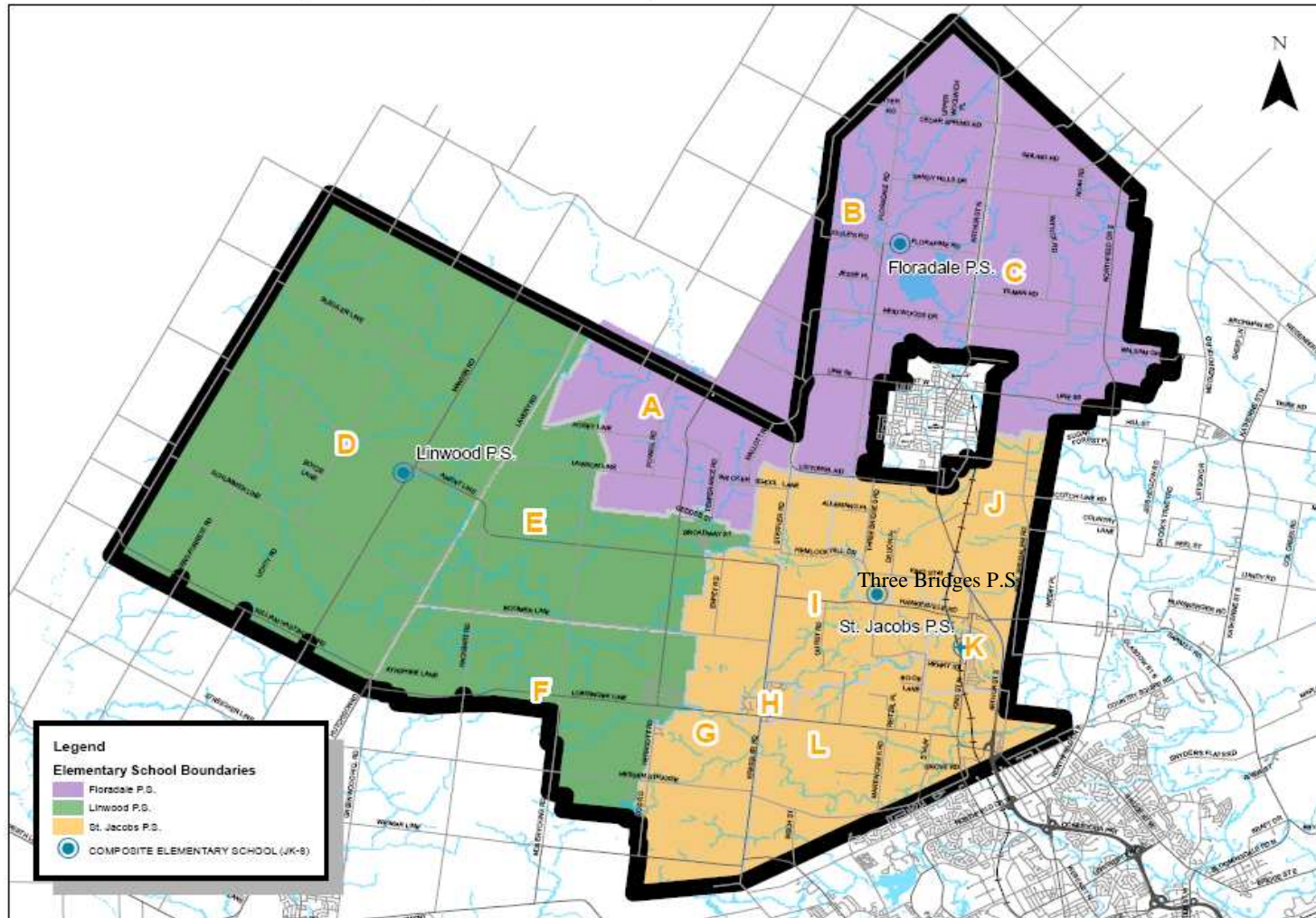
School	Built Capacity	Capacity with FDK	2012			2014			2016			2018			2020		
			JK-6	7-8	Total	JK-6	7-8	Total	JK-6	7-8	Total	JK-6	7-8	Total	JK-6	7-8	Total
Floradale P.S.	322	322	189	56	240	182	58	235	177	65	237	201	41	237	212	52	259
Linwood P.S.	510	519	359	96	455	369	87	456	381	91	472	397	88	485	400	101	501
St. Jacobs P.S.	348	?	235	57	292	247	71	318	267	76	343	280	69	349	289	74	363
Three Bridges P.S.	92	92	71	26	102	76	21	102	78	22	105	72	33	110	66	29	100
Total	1180		854	235	1089	874	237	1111	903	254	1157	950	231	1181	967	256	1223

Scenario Review



4. Scenario Review

Woolwich and Wellesley Townships Review: Status Quo



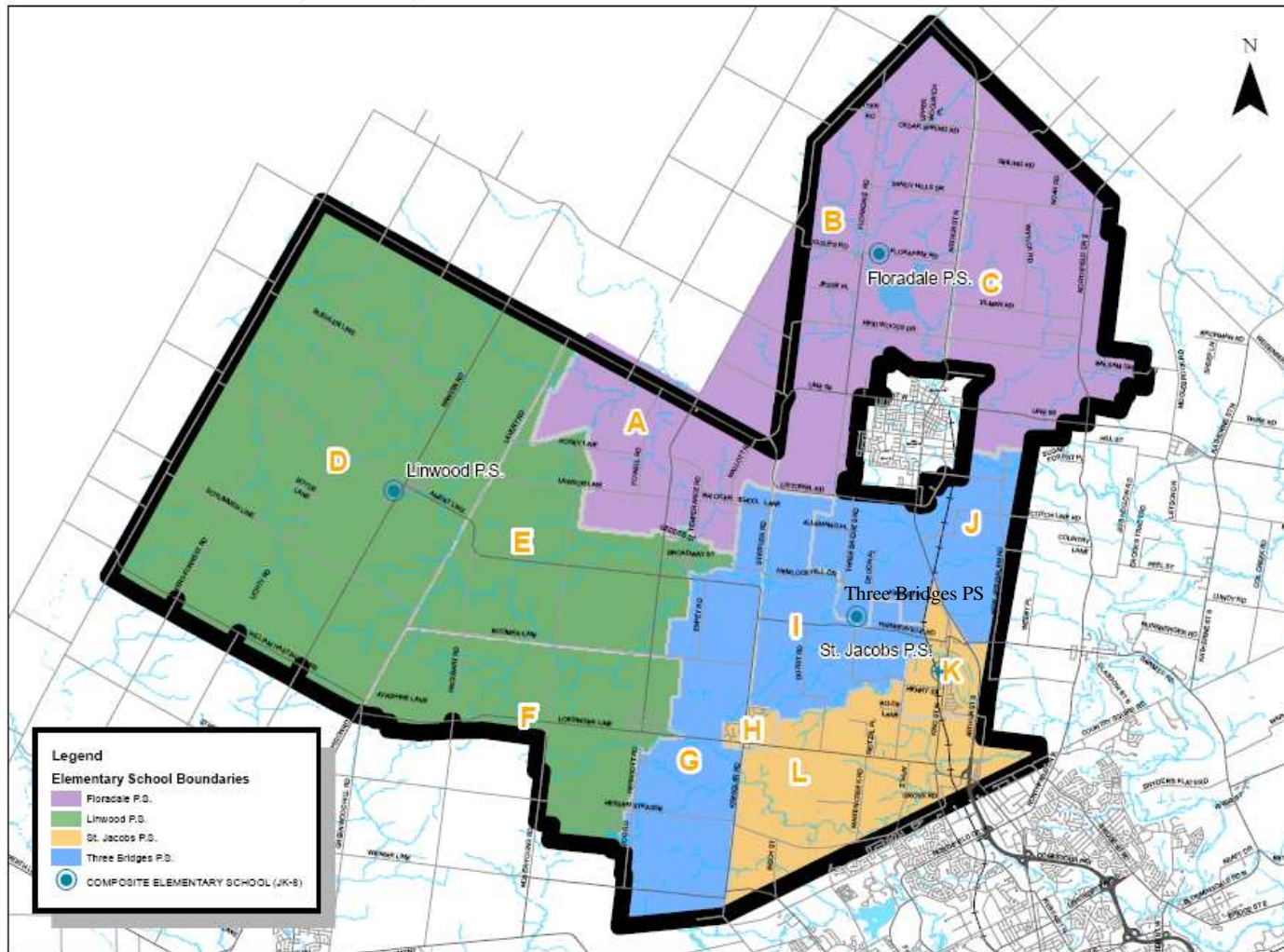
Details
No change to existing situation

STATUS QUO

School	Built Capacity	Capacity with FDK	2012			2014			2016			2018			2020		
			JK-6	7-8	Total	JK-6	7-8	Total	JK-6	7-8	Total	JK-6	7-8	Total	JK-6	7-8	Total
Floradale P.S.	322	322	189	56	245	182	58	240	177	65	242	201	41	242	212	52	264
Linwood P.S.	510	519	359	96	455	369	87	456	381	91	472	397	88	485	400	101	501
St. Jacobs P.S.	348	?	255	58	313	256	73	329	276	76	352	282	79	361	293	75	368
Three Bridges P.S.	92	92	51	25	76	67	19	86	69	22	91	70	23	93	62	28	90
Total	1272		854	235	1089	874	237	1111	903	254	1157	950	231	1181	967	256	1223

4. Scenario Review

Woolwich and Wellesley Townships Review: Scenario 1



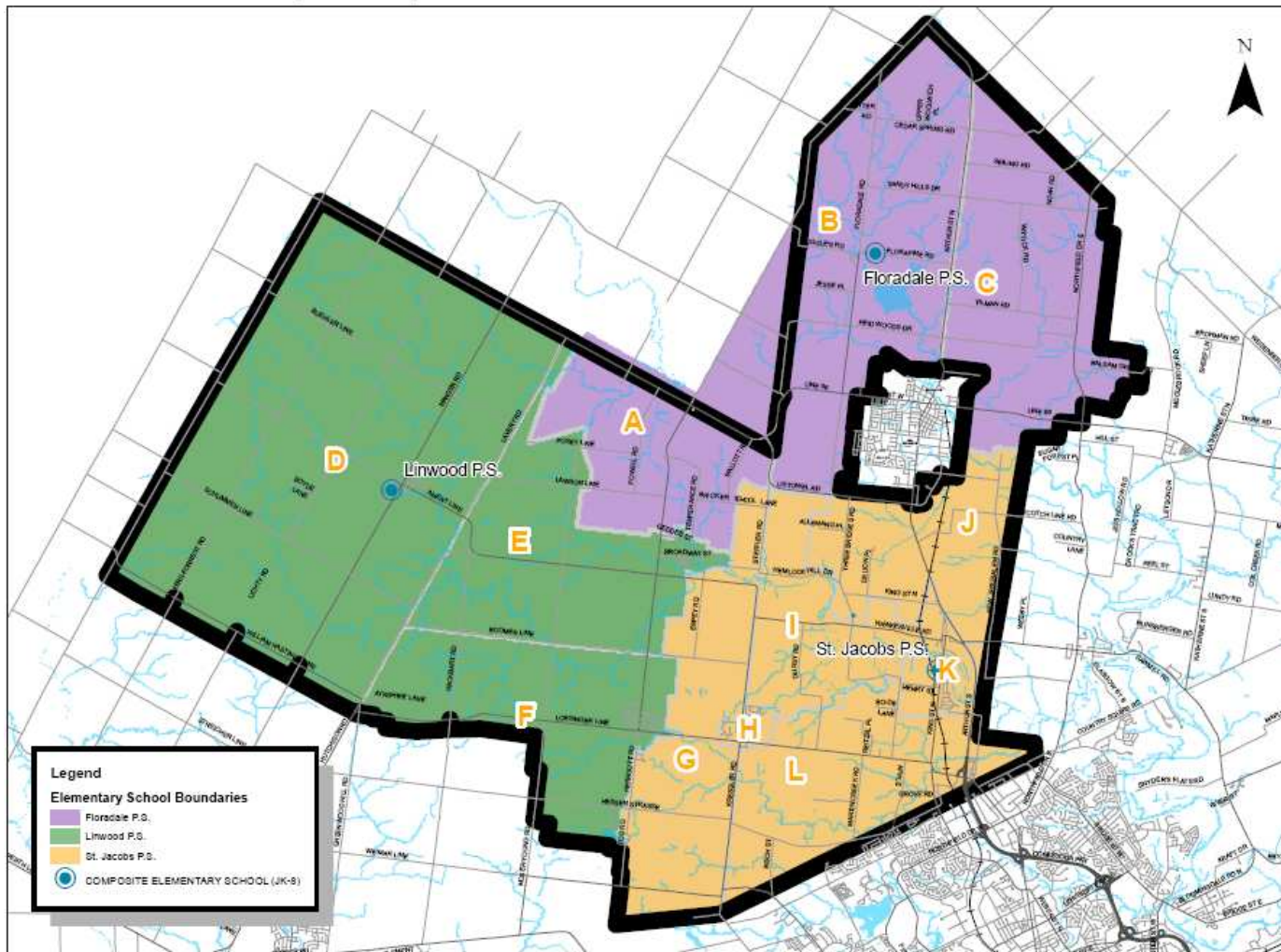
- Details
- Defined Boundary for Three Bridges PS (gets Areas G, I, J)
- St. Jacobs PS gets Areas H, K, L.
- All else remains same

Scenario 1

School	Built Capacity	Capacity with FDK	2012			2014			2016			2018			2020		
			JK-6	7-8	Total	JK-6	7-8	Total	JK-6	7-8	Total	JK-6	7-8	Total	JK-6	7-8	Total
Floradale P.S.	322	322	189	56	245	182	58	240	177	65	242	201	41	242	212	52	264
Linwood P.S.	510	519	359	96	455	369	87	456	381	91	472	397	88	485	400	101	501
St. Jacobs P.S.	348	?	235	57	292	247	71	318	267	76	343	280	69	349	289	74	363
Three Bridges P.S.	92	?	71	26	97	76	21	97	78	22	100	72	33	105	66	29	95
Total	1272		854	235	1089	874	237	1111	903	254	1157	950	231	1181	967	256	1223

4. Scenario Review

Woolwich and Wellesley Townships Review: Scenario 2



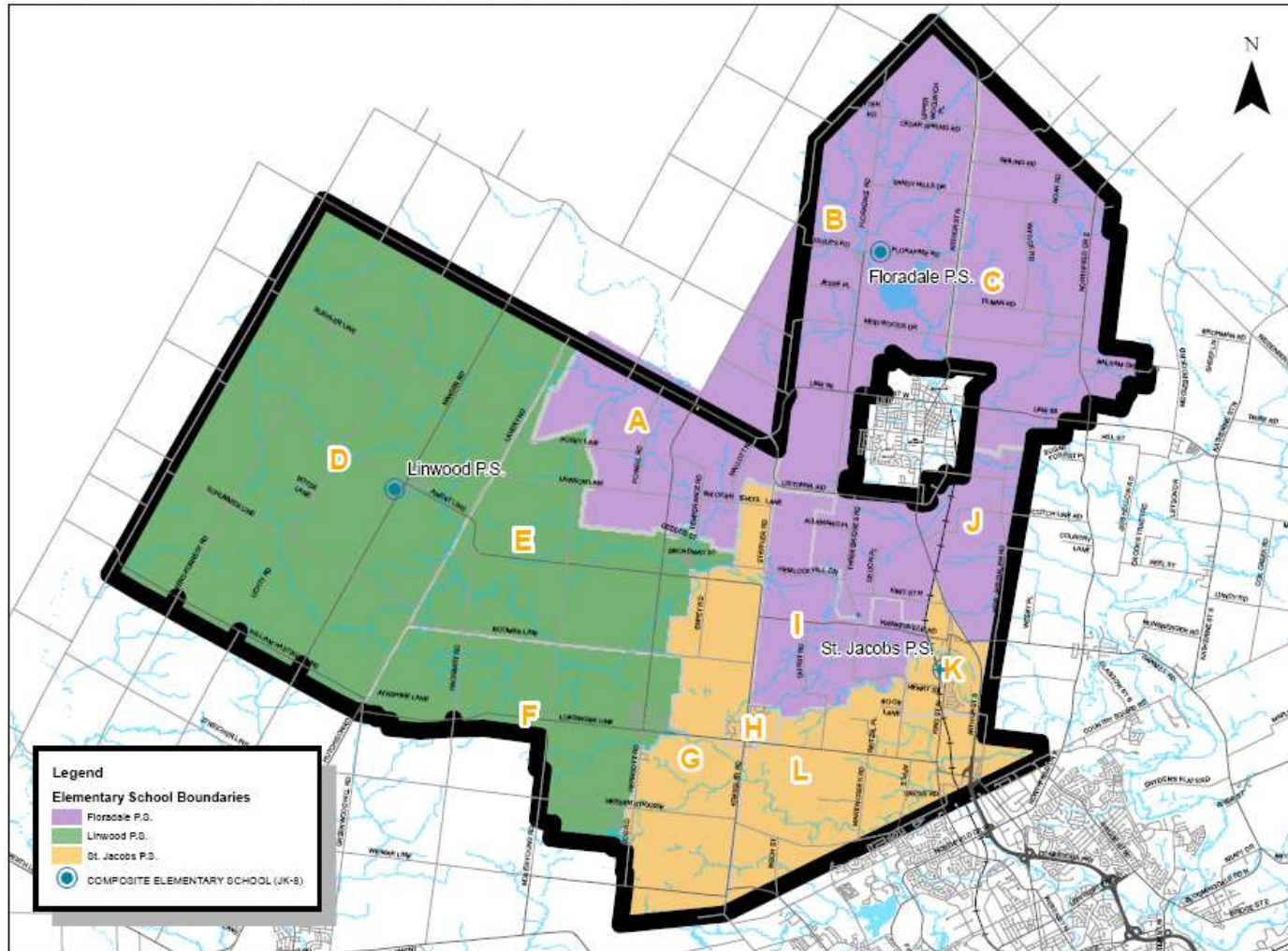
- Details
- Three Bridges PS closed. Students directed to St. Jacobs PS
- All else remains same

Scenario 2

School	Built Capacity	Capacity with FDK	2012			2014			2016			2018			2020		
			JK-6	7-8	Total	JK-6	7-8	Total	JK-6	7-8	Total	JK-6	7-8	Total	JK-6	7-8	Total
Floradale P.S.	322	322	189	56	245	182	58	240	177	65	242	201	41	242	212	52	264
Linwood P.S.	510	519	359	96	455	369	87	456	381	91	472	397	88	485	400	101	501
St. Jacobs P.S.	348	?	306	83	389	323	92	415	345	98	443	352	102	454	355	103	458
Three Bridges P.S.	92	92	0	0	0	0	0	0	0	0	0	0	0	0	0	0	0
Total	1180		854	235	1089	874	237	1111	903	254	1157	950	231	1181	967	256	1223

4. Scenario Review

Woolwich and Wellesley Townships Review: Scenario 3



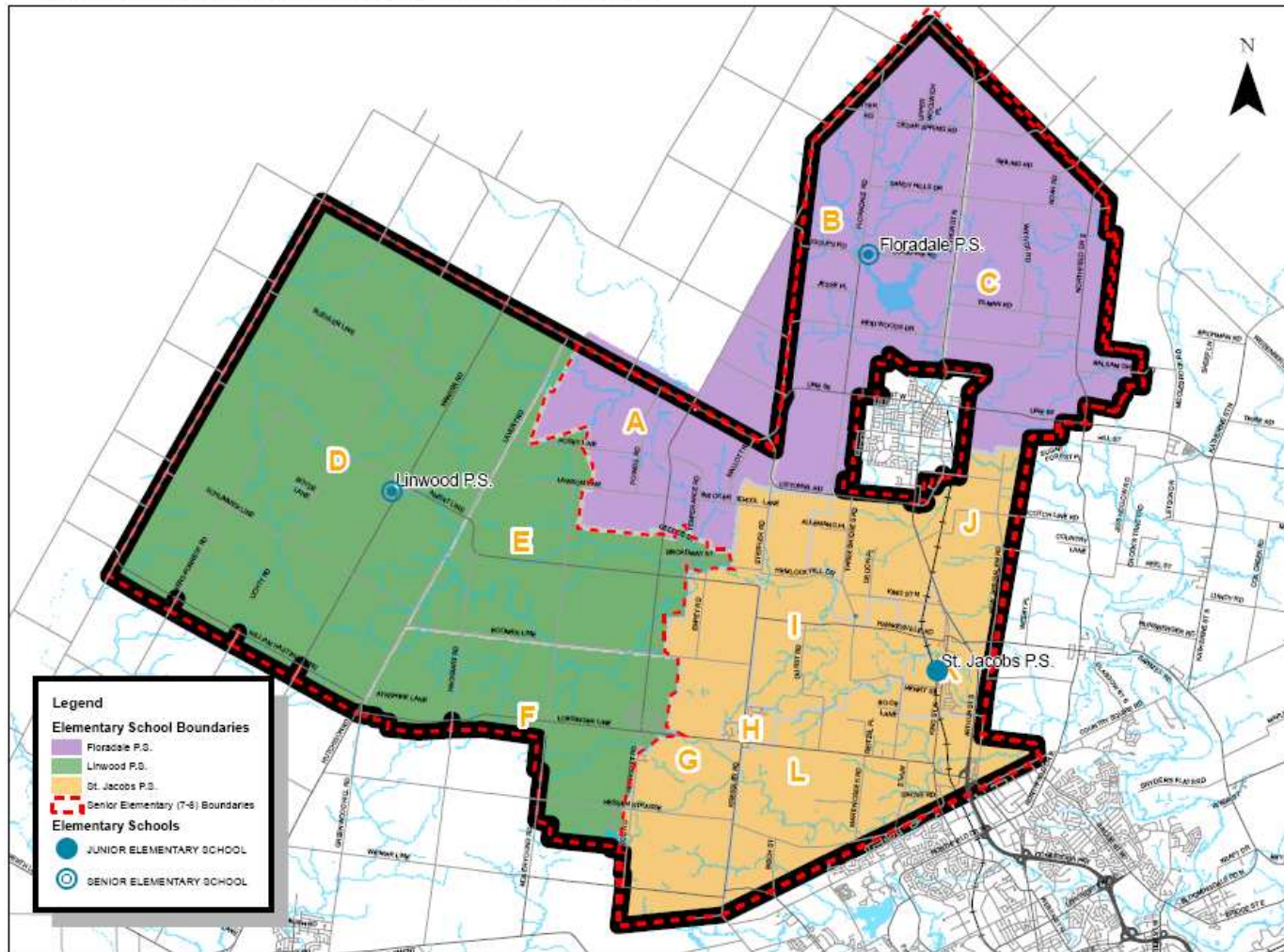
- Details
- Three Bridges PS closed. Students directed to St. Jacobs PS and Floradale PS.
- St. Jacobs PS gets Areas G, H, K, L.
- Floradale PS gets Areas I, J from St. Jacobs PS.

Scenario 3

School	Built Capacity	Capacity with FDK	2012			2014			2016			2018			2020		
			JK-6	7-8	Total	JK-6	7-8	Total	JK-6	7-8	Total	JK-6	7-8	Total	JK-6	7-8	Total
Floradale P.S.	322	322	231	74	305	225	72	297	220	81	301	241	60	301	246	69	315
Linwood P.S.	510	519	359	96	455	369	87	456	381	91	472	397	88	485	400	101	501
St. Jacobs P.S.	348	?	264	65	329	280	78	358	302	82	384	312	83	395	321	86	407
Three Bridges P.S.	92	92	0	0	0	0	0	0	0	0	0	0	0	0	0	0	0
Total	1180		854	235	1089	874	237	1111	903	254	1157	950	231	1181	967	256	1223

4. Scenario Review

Woolwich and Wellesley Townships Review: Scenario 5



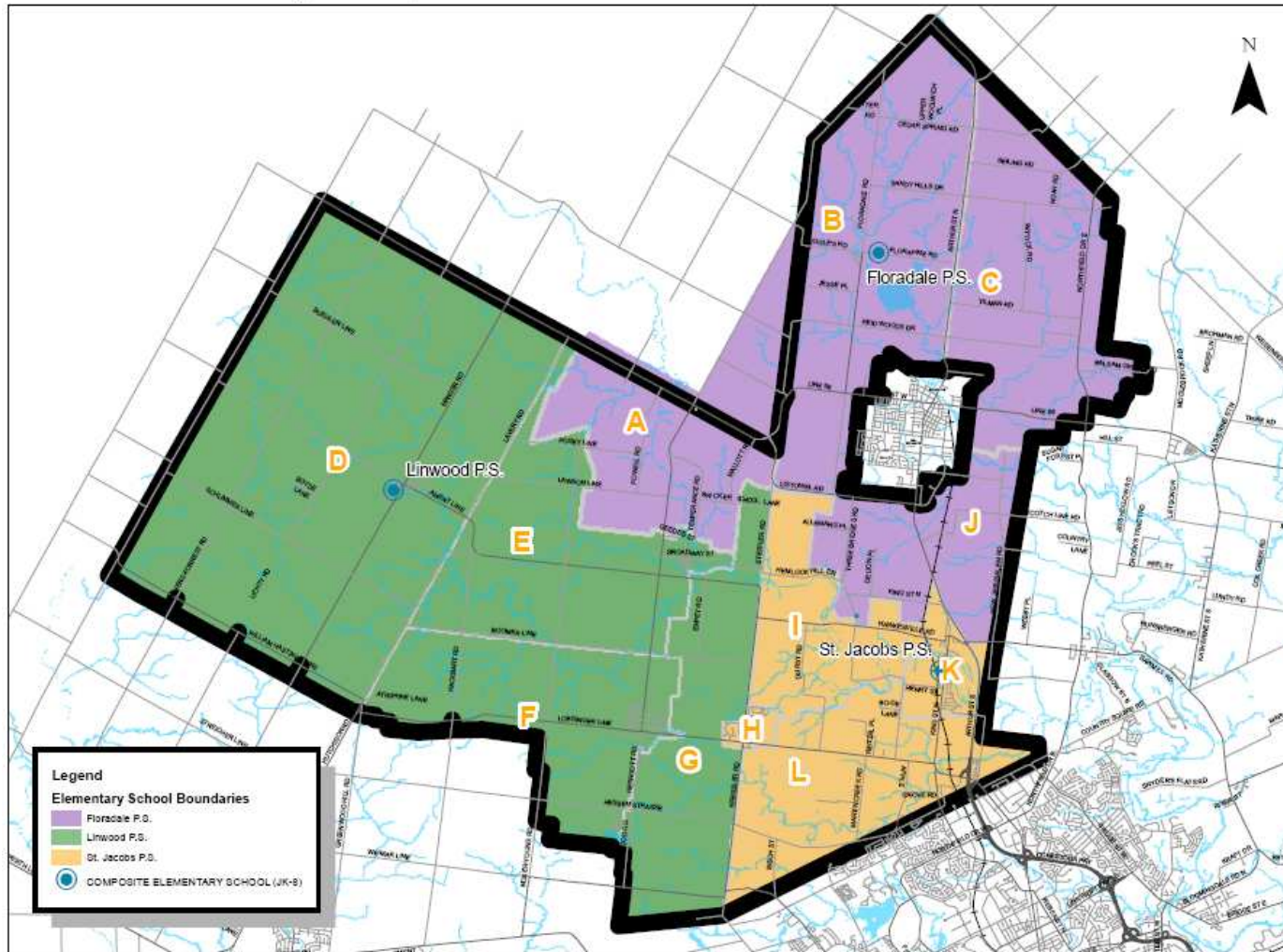
- Details
- Three Bridges PS closed. JK-6 students directed to St. Jacobs PS. 7-8 students directed to Floradale PS.
- St. Jacobs converts to JK-6. 7-8 students directed to Floradale PS.
- Linwood PS, no change

Scenario 5

School	Built Capacity	Capacity with FDK	2012			2014			2016			2018			2020		
			JK-6	7-8	Total	JK-6	7-8	Total	JK-6	7-8	Total	JK-6	7-8	Total	JK-6	7-8	Total
Floradale P.S.	322	322	170	139	309	177	150	327	176	163	339	201	143	344	212	155	367
Linwood P.S.	510	519	359	96	455	369	87	456	381	91	472	397	88	485	400	101	501
St. Jacobs P.S.	348	?	325	0	325	328	0	328	346	0	346	352	0	352	355	0	355
Three Bridges P.S.	92	92	0	0	0	0	0	0	0	0	0	0	0	0	0	0	0
Total	1180		854	235	1089	874	237	1111	903	254	1157	950	231	1181	967	256	1223

4. Scenario Review

Woolwich and Wellesley Townships Review: Scenario 6



•Details

•Three Bridges PS closed. Students directed to St. Jacobs PS except Area J which is directed to Floradale.

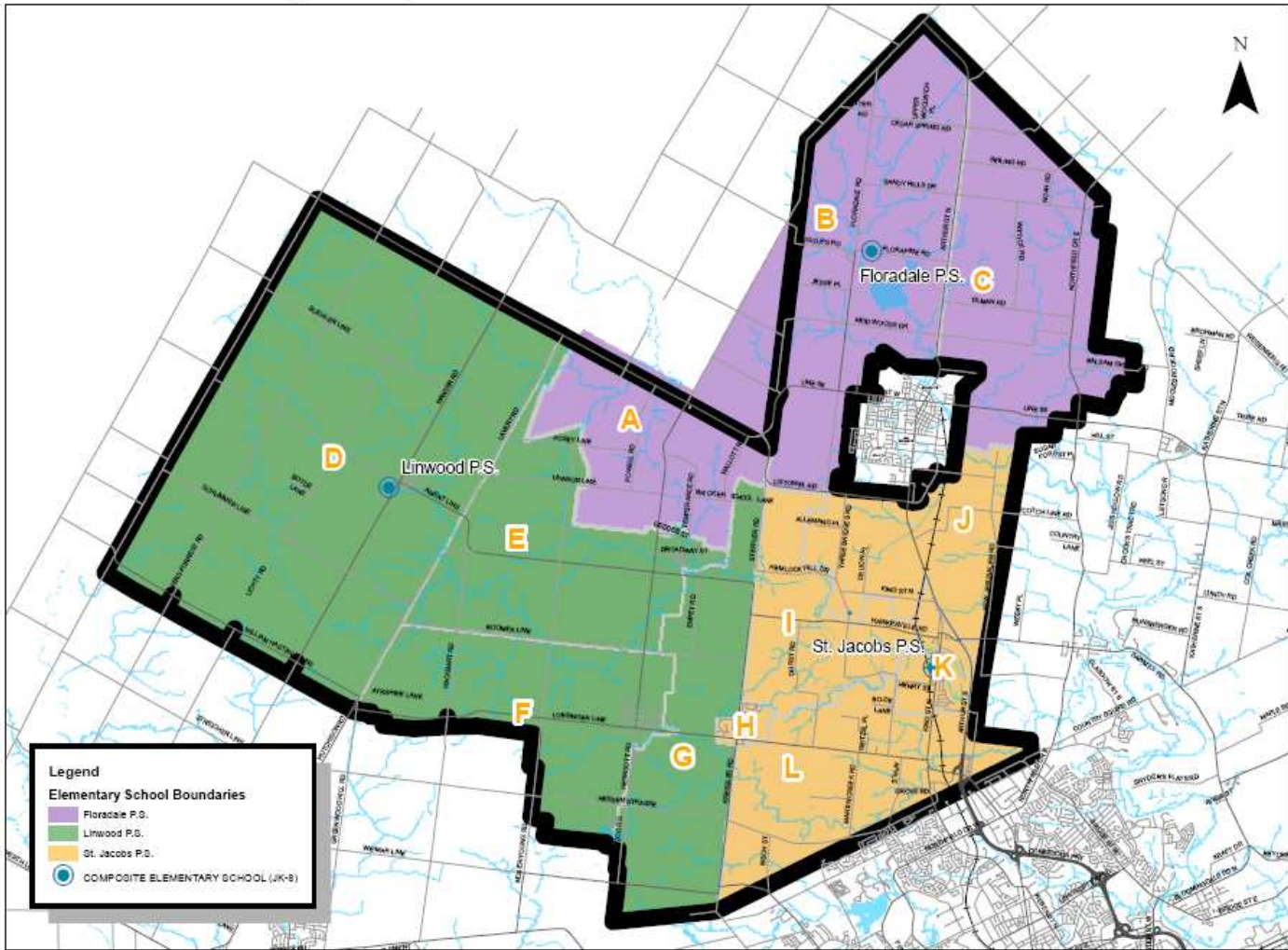
•Steffler Rd. Area (not shown b/w Area A,J directed to Floradale)

Scenario 6

School	Built Capacity	Capacity with FDK	2012			2014			2016			2018			2020		
			JK-6	7-8	Total	JK-6	7-8	Total	JK-6	7-8	Total	JK-6	7-8	Total	JK-6	7-8	Total
Floradale P.S.	322	322	212	64	291	207	63	285	198	73	286	223	49	287	231	59	305
Linwood P.S.	510	519	381	100	481	390	93	483	404	96	500	418	97	515	423	107	530
St. Jacobs P.S.	348	?	261	71	317	277	81	343	301	85	371	309	85	379	313	90	388
Three Bridges P.S.	92	92	0	0	0	0	0	0	0	0	0	0	0	0	0	0	0
Total	1180		854	235	1089	874	237	1111	903	254	1157	950	231	1181	967	256	1223

4. Scenario Review

Woolwich and Wellesley Townships Review: Scenario 7



•Details

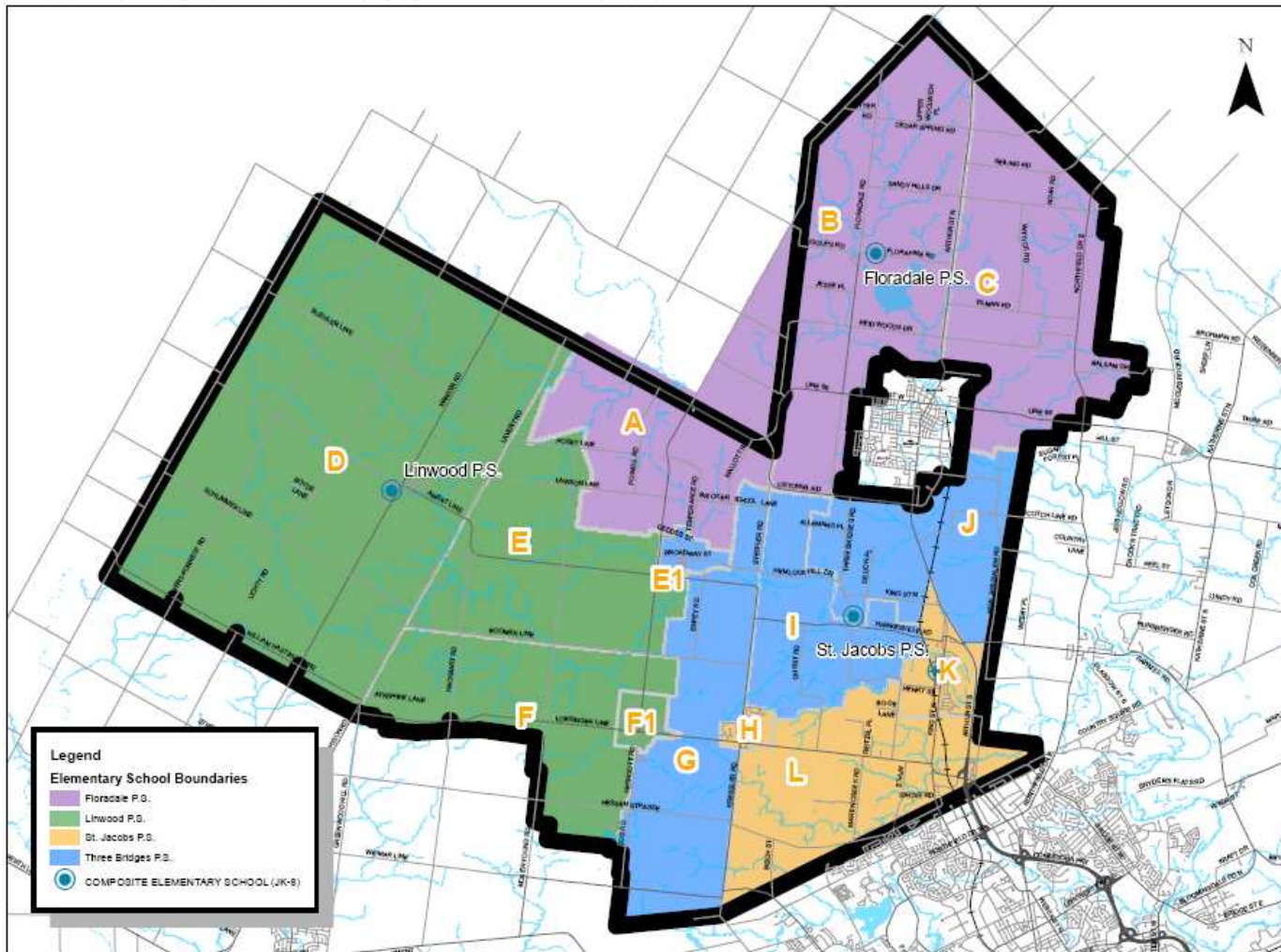
•Three Bridges PS closed. Students directed to St. Jacobs PS except Area G which is directed to Linwood.

Scenario 7

School	Built Capacity	Capacity with FDK	2012			2014			2016			2018			2020		
			JK-6	7-8	Total	JK-6	7-8	Total	JK-6	7-8	Total	JK-6	7-8	Total	JK-6	7-8	Total
Floradale P.S.	322	322	189	56	245	182	58	240	177	65	242	201	41	242	212	52	264
Linwood P.S.	510	519	381	100	481	390	93	483	404	96	500	418	97	515	423	107	530
St. Jacobs P.S.	348	?	284	79	363	302	86	388	322	93	415	331	93	424	332	97	429
Three Bridges P.S.	92	92	0	0	0	0	0	0	0	0	0	0	0	0	0	0	0
Total	1180		854	235	1089	874	237	1111	903	254	1157	950	231	1181	967	256	1223

4. Scenario Review

Woolwich and Wellesley Townships Review: Scenario 8



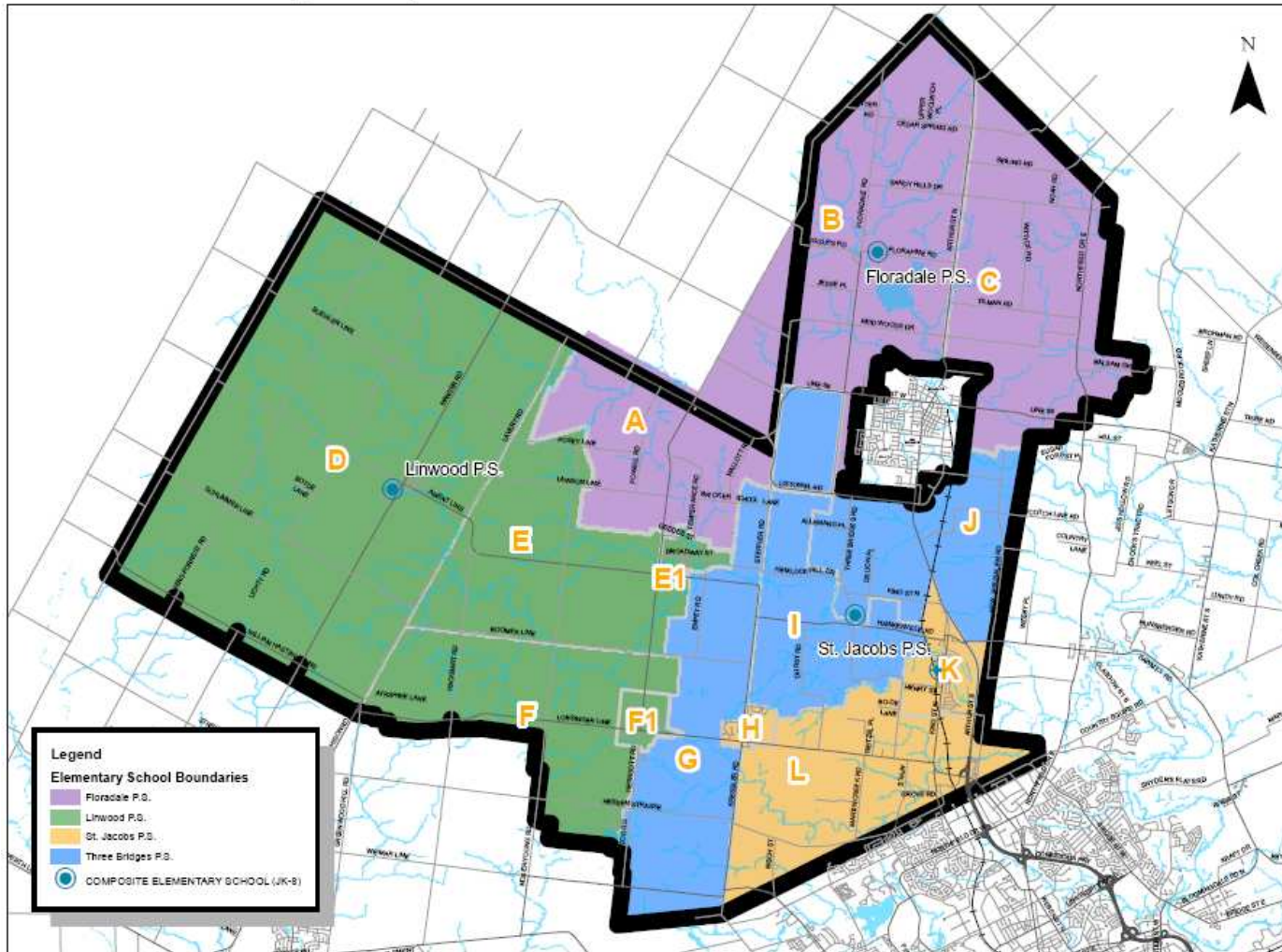
- Details
- Defined Boundary for Three Bridges PS (gets Areas G, I, J, E1)
- St. Jacobs PS gets Areas H, K, L.
- All else remains same

Scenario 8

School	Built Capacity	Capacity with FDK	2012			2014			2016			2018			2020		
			JK-6	7-8	Total	JK-6	7-8	Total	JK-6	7-8	Total	JK-6	7-8	Total	JK-6	7-8	Total
Floradale P.S.	322	322	189	56	245	182	58	240	177	65	242	201	41	242	212	52	264
Linwood P.S.	510	519	333	89	422	337	83	420	347	83	430	360	81	441	363	91	454
St. Jacobs P.S.	348	?	235	57	292	247	71	318	267	76	343	280	69	349	289	74	363
Three Bridges P.S.	92	92	97	33	130	108	25	133	112	30	142	109	40	149	103	39	142
Total	1180		854	235	1089	874	237	1111	903	254	1157	950	231	1181	967	256	1223

4. Scenario Review

Woolwich and Wellesley Townships Review: Scenario 9



- Details
- Defined Boundary for Three Bridges PS (gets Areas G, I, J, and part of B)
- St. Jacobs PS gets Areas H, K, L.
- All else remains same

Scenario 9

School	Built Capacity	Capacity with FDK	2012			2014			2016			2018			2020		
			JK-6	7-8	Total	JK-6	7-8	Total	JK-6	7-8	Total	JK-6	7-8	Total	JK-6	7-8	Total
Floradale P.S.	322	322	189	56	240	182	58	235	177	65	237	201	41	237	212	52	259
Linwood P.S.	510	519	359	96	455	369	87	456	381	91	472	397	88	485	400	101	501
St. Jacobs P.S.	348	?	235	57	292	247	71	318	267	76	343	280	69	349	289	74	363
Three Bridges P.S.	92	92	71	26	102	76	21	102	78	22	105	72	33	110	66	29	100
Total	1180		854	235	1089	874	237	1111	903	254	1157	950	231	1181	967	256	1223

4. Scenario Review

Scenario Groupings

1. Status Quo
2. Three Bridges Open with defined attendance area boundary
 - Scenario 1
 - Scenario 8
 - Scenario 9
3. Three Bridges closed
 - Scenario 2
 - Scenario 3
 - Scenario 5
 - Scenario 6
 - Scenario 7

Woolwich & Wellesley Townships Accommodation Review

ARC # 11

- **Wednesday, March 21, 2012: 6:30- 8:00 p.m.**

Public Meeting # 2

- **Wednesday, April 4, 2012: 7:00 - 8:30 p.m.**



Contact Information

- Website: www.wrdsb.ca
 - » About>Planning>Accommodation Reviews
 - » Woolwich Wellesley Townships Accommodation Review
- E-mail: boundaryfeedback@wrdsb.on.ca
- Phone: 519-570-0003 ext. 4419

