

Review Objectives

- **To determine long-term boundaries for schools in the Review area, which include:**
 - a permanent solution for Lexington P.S.
 - determine need to utilize the 410 Falconridge Drive, Kitchener property.
- **To determine viability of a JK-8 school in the Review area.**
- **To have regard for community schools:**
 - which recognize the relationship/identity of community to local elementary school.
 - which minimize transportation costs in the long-term.
- **To support optimal use of facilities, capital and operating costs.**
 - Consider priorities for physical accessibility of facilities by the Accessibility Committee.
- **To provide current and future students in the review area with equitable program opportunities to ensure their success by having regard for policies, directions or statements of the Ministry of Education and the WRDSB:**
 - the Good Schools Standing Committee guiding principles on school size and configuration.
 - distribution and accessibility of Special Education, French Immersion and English as a Second Language programs.
 - plans with respect to curriculum and program changes (i.e. Early Learning Program, class sizes, etc).
- **To address student transitions where changes are proposed.**

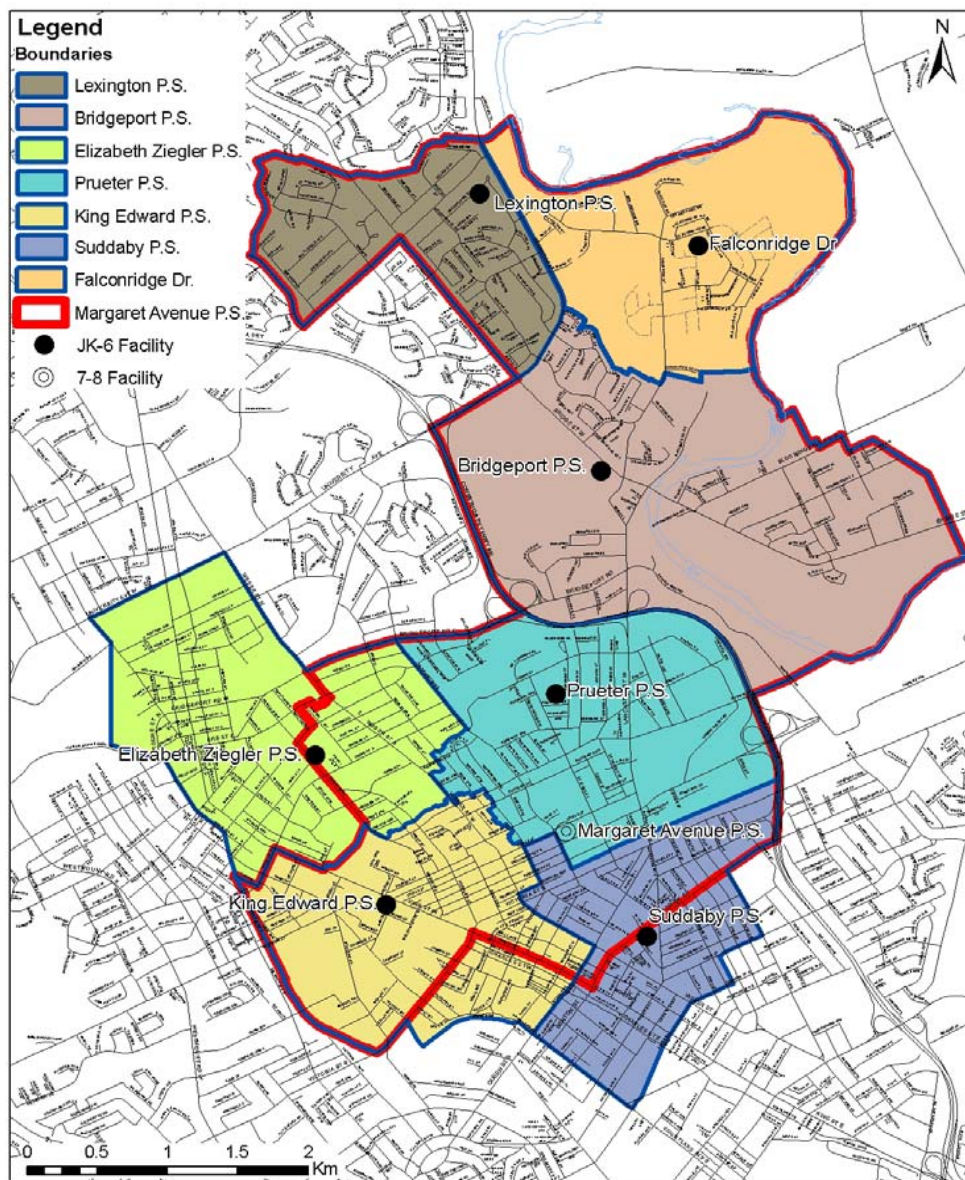
2009/10 Ride Times for Regular Transportation Runs to Margaret Avenue P.S.

Run	Type	Min. Ride Time (mins.)	Max. Ride Time (mins.)	Average Ride Time (mins.)	# students
MRG001	Pick up	3	16	10.6	29
MRG002	Pick up	9	25	17.4	44
MRG003	Pick up	2	20	12.5	50
MRG004	Pick up	11	23	18.3	41
MRG101	Drop off	7	19	14.8	29
MRG102	Drop off	12	32	22.1	43
MRG103	Drop off	10	29	20.9	50
MRG104	Drop off	9	21	12.7	41

NOTE: Runs MRG002 and MRG102 include students from the Kraus Dr/Kingscourt Dr area which will be attending Lincoln Avenue for grades 7/8 as of September 2010



Scenario 1



ENROLMENT PROJECTIONS

Facilities		Program				Enrolment Projections		
School	OTG Capacity	JK-6	7-8	FI	Spec Ed	2013	2016	2019
Bridgeport	471	•				327	338	324
Elizabeth Ziegler	419	•		•	•	360	344	330
King Edward	357	•			•	341	336	321
Lexington	322	•				263	267	284
Margaret Avenue	435		•		•	367	372	400
Prueter	346	•			•	212	231	236
Suddaby	493	•		•		414	415	420
Falconridge Dr	400	•				291	399	389
TOTAL	3243	7	1	2	4	2575	2702	2704

ESTIMATED CONSTRUCTION COSTS

Location	Description	Estimated Cost
Lexington P.S.	Portapack demolition and replacement (12 classrooms), Gym replacement/upgrades	\$ 4.5 M
410 Falconridge Dr	JK-6 school, 400 Capacity	\$ 8.2 M
Total		\$ 12.7 M

TRANSPORTATION

- Net decrease in JK-6 transportation eligibility
- No net change to 7-8 transportation eligibility

Notes:

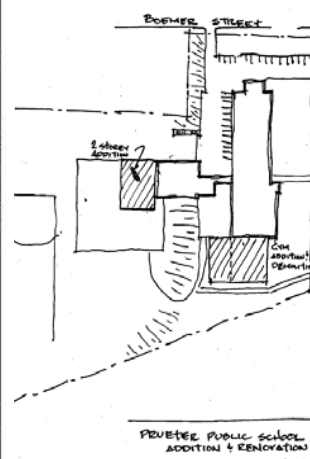
OTG Capacity = On the Ground Capacity – Ministry of Education assigned loading of students in permanent space in a facility
 A factor has been applied to each school's enrolment to account for out of boundary student gains and loses due to magnet programs such as French Immersion (FI) and Special Education (SpecEd)
 Enrolment projections are approximations calculated based on the most current information available
 Cost estimates are preliminary based on a specific scope of work



Scenario 2

ENROLMENT PROJECTIONS

Facilities		Program				Enrolment Projections		
School	OTG Capacity	JK-6	JK-8	FI	Spec Ed	2013	2016	2019
Bridgeport	471	•				352	392	378
Elizabeth Ziegler	419	•		•	•	360	344	330
King Edward	357	•			•	341	336	321
Lexington	322	•				263	267	284
Margaret Avenue	CLOSED							
Prueter	389		•		•	370	386	402
Suddaby	493	•		•		414	415	420
Falconridge Dr	575		•			475	562	569
TOTAL	3026	5	2	2	3	2575	2702	2704



ESTIMATED CONSTRUCTION COSTS

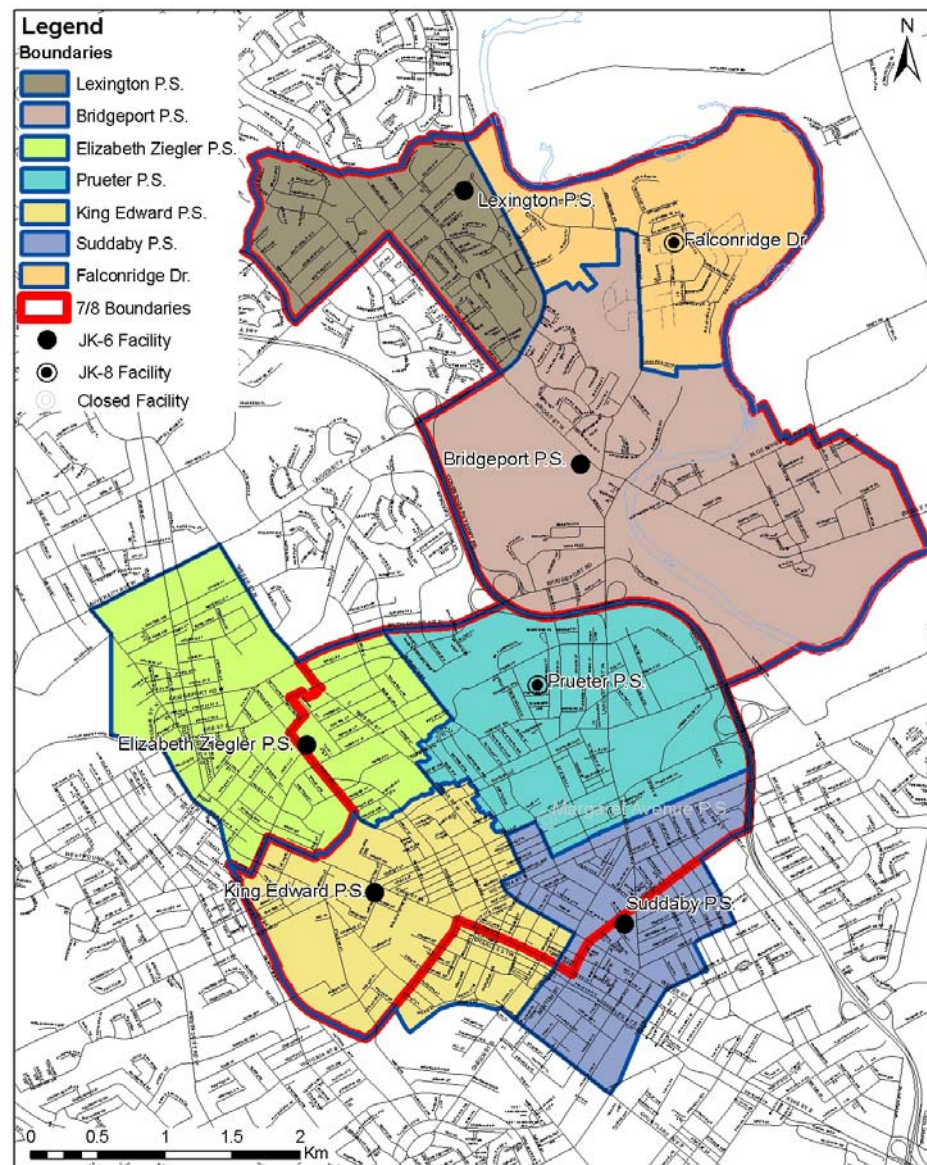
Location	Description	Estimated Cost
Lexington P.S.	Portapack demolition and replacement (12 classrooms), Gym replacement	\$ 4.5 M
Prueter P.S.	2 storey addition (5 classrooms and Elevator), Double gym, office renovations, conversion of existing gym to library	\$ 3.8 M
410 Falconridge Dr	JK-8 school, 575 Capacity	\$ 11.3 M
Total		\$ 19.6 M

TRANSPORTATION

- Net decrease in JK-6 transportation eligibility
- Net decrease in 7-8 transportation eligibility (long-term)

Notes:

OTG Capacity = On the Ground Capacity – Ministry of Education assigned loading of students in permanent space in a facility
 A factor has been applied to each school's enrolment to account for out of boundary student gains and losses due to magnet programs such as French Immersion (FI) and Special Education (SpecEd)
 Enrolment projections are approximations calculated based on the most current information available
 Cost estimates are preliminary based on a specific scope of work

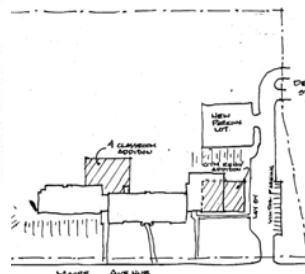




ENROLMENT PROJECTIONS

Facilities		Program				Enrolment Projections		
School	OTG Capacity	JK-6	JK-8	FI	SpecEd	2013	2016	2019
Bridgeport	471	•				352	392	378
Elizabeth Ziegler	517		•	•	•	549	546	540
King Edward	357	•			•	341	336	321
Lexington	500		•			472	484	518
Margaret Avenue	CLOSED							
Prueter	346	•			•	212	231	236
Suddaby	493	•		•		414	415	420
Falconridge Dr	375	•				266	345	335
TOTAL	3059	5	2	2	3	2606	2749	2748

ESTIMATED CONSTRUCTION COSTS



Location	Description	Estimated Cost
Lexington P.S.	JK-8 school, approx. 500 capacity, demolition of existing school	\$ 10.0 M
Elizabeth Ziegler P.S.	Addition (6 classrooms), double gym, new parking lot/site access	\$ 3.35 M
410 Falconridge Dr	JK-6 school, 375 Capacity	\$ 8.0 M
Total		\$ 21.35 M

TRANSPORTATION

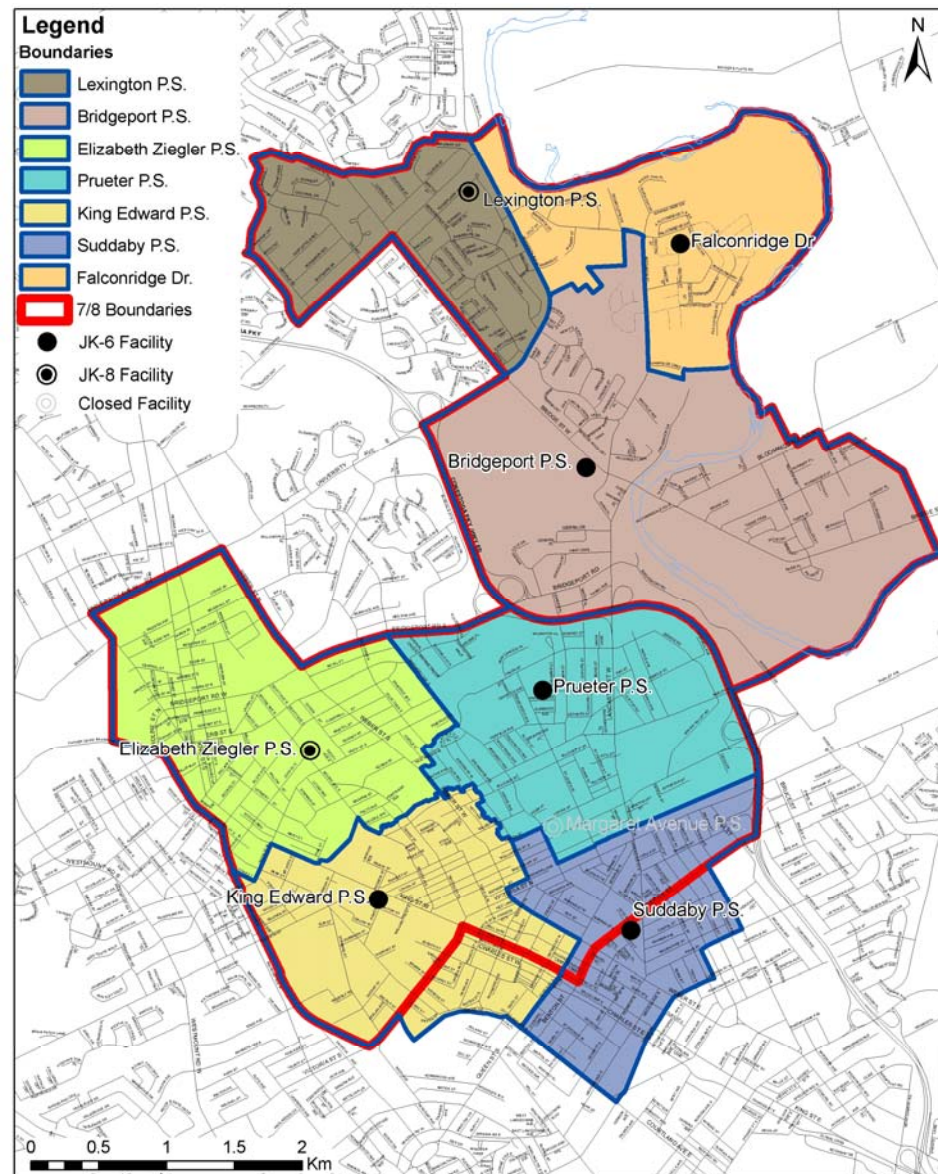
- Net decrease in JK-6 transportation eligibility
- No change in 7-8 transportation eligibility

Notes:

OTG Capacity = On the Ground Capacity – Ministry of Education assigned loading of students in permanent space in a facility
A factor has been applied to each school's enrolment to account for out of boundary student gains and losses due to magnet programs such as French Immersion (FI) and Special Education (SpecEd)

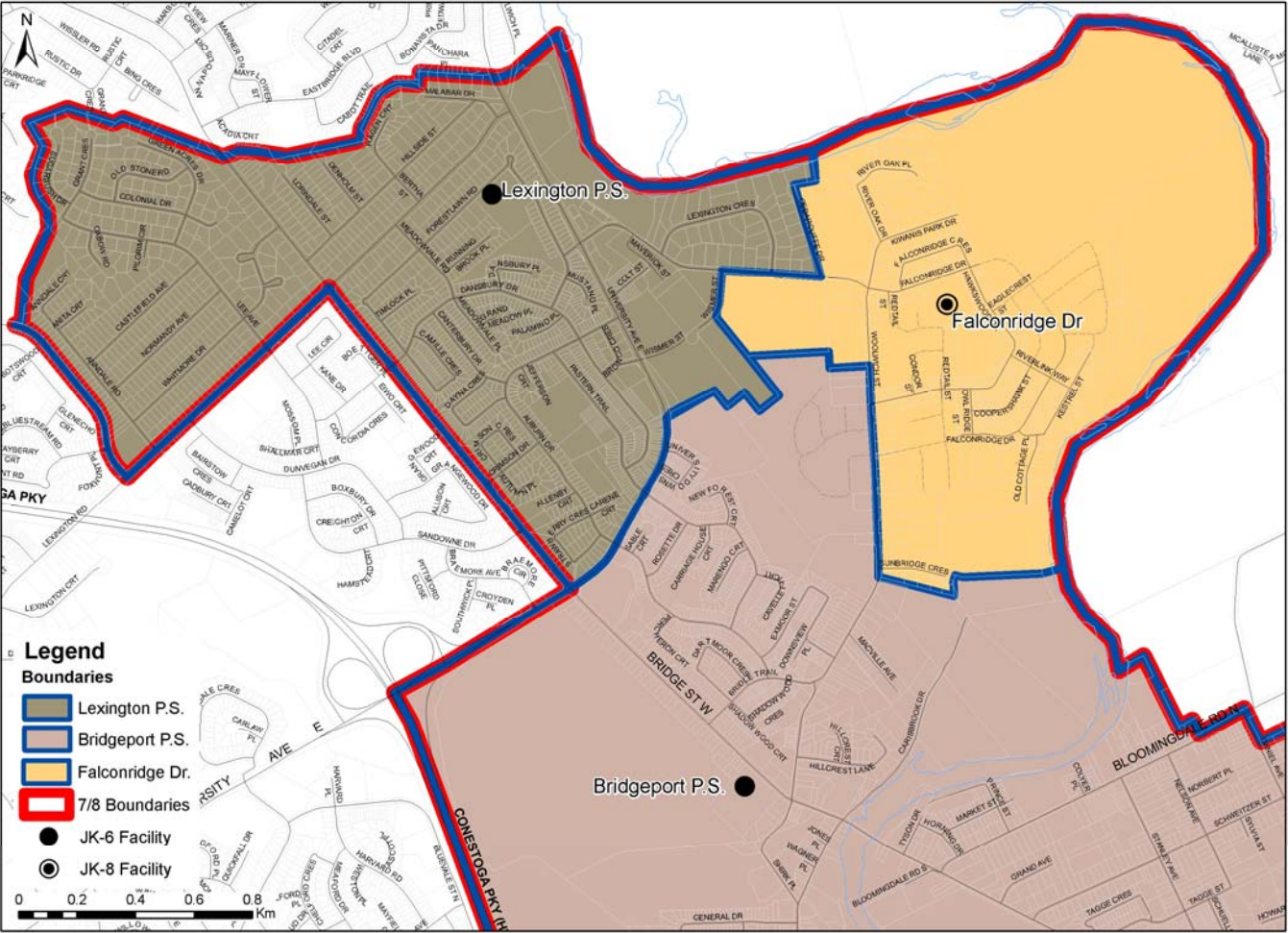
Enrolment projections are approximations calculated based on the most current information available

Cost estimates are preliminary based on a specific scope of work



East KW Accommodation Review

Scenario 2 - Boundary Variation



Scenario 2 Variation – Enrolment Breakdown

School	Built Capacity	2013	2016	2019
Bridgeport	471	352	392	378
Lexington	322	322	336	359
Falconridge	500	416	496	500
TOTAL	1293	1090	1224	1237

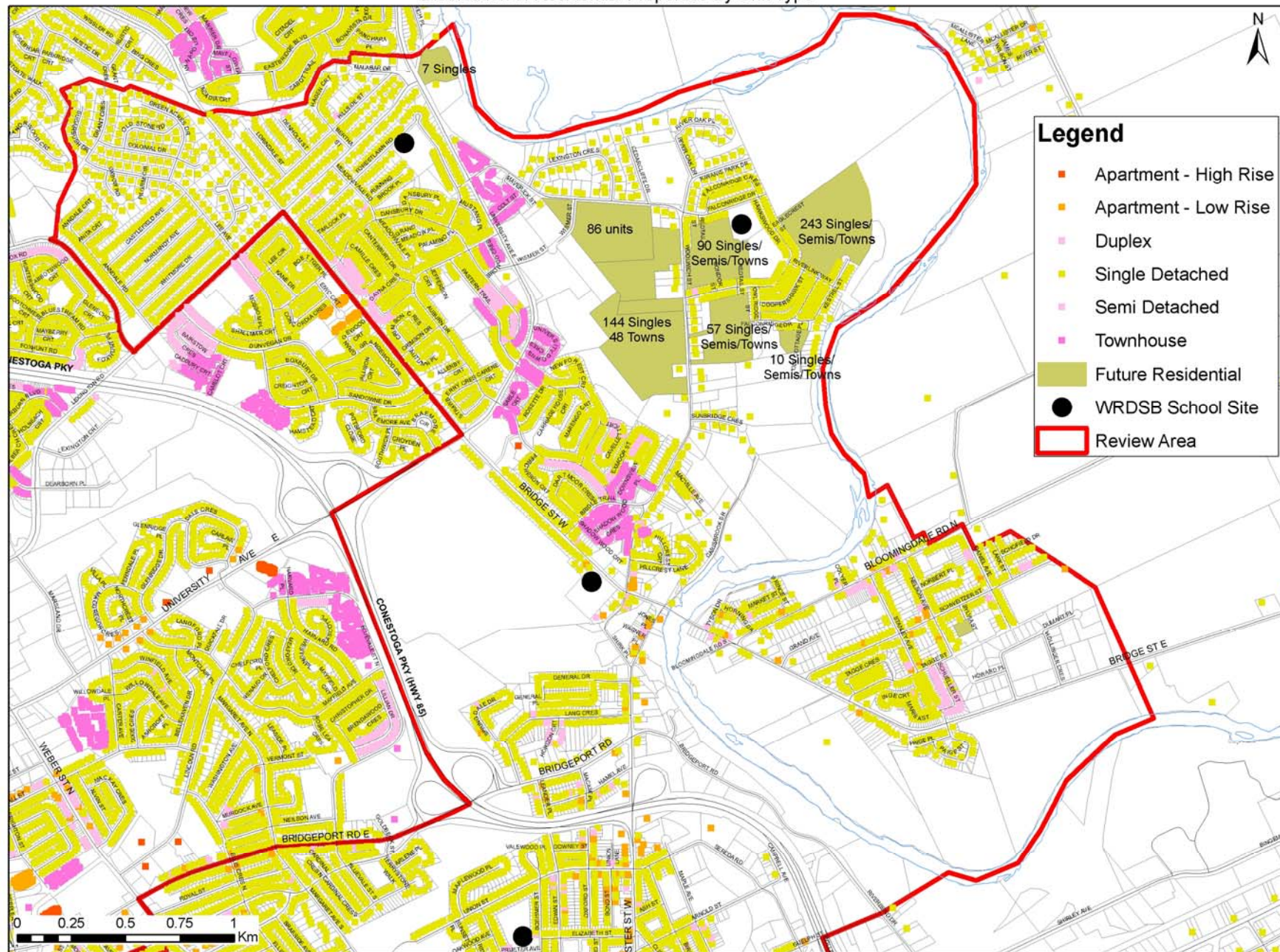
School	2013		2016		2019	
	JK-6	7-8	JK-6	7-8	JK-6	7-8
Falconridge Dr	207	209	276	220	260	240
Prueter	212	158	231	155	236	166

Scenario 10 Variation – Enrolment Breakdown

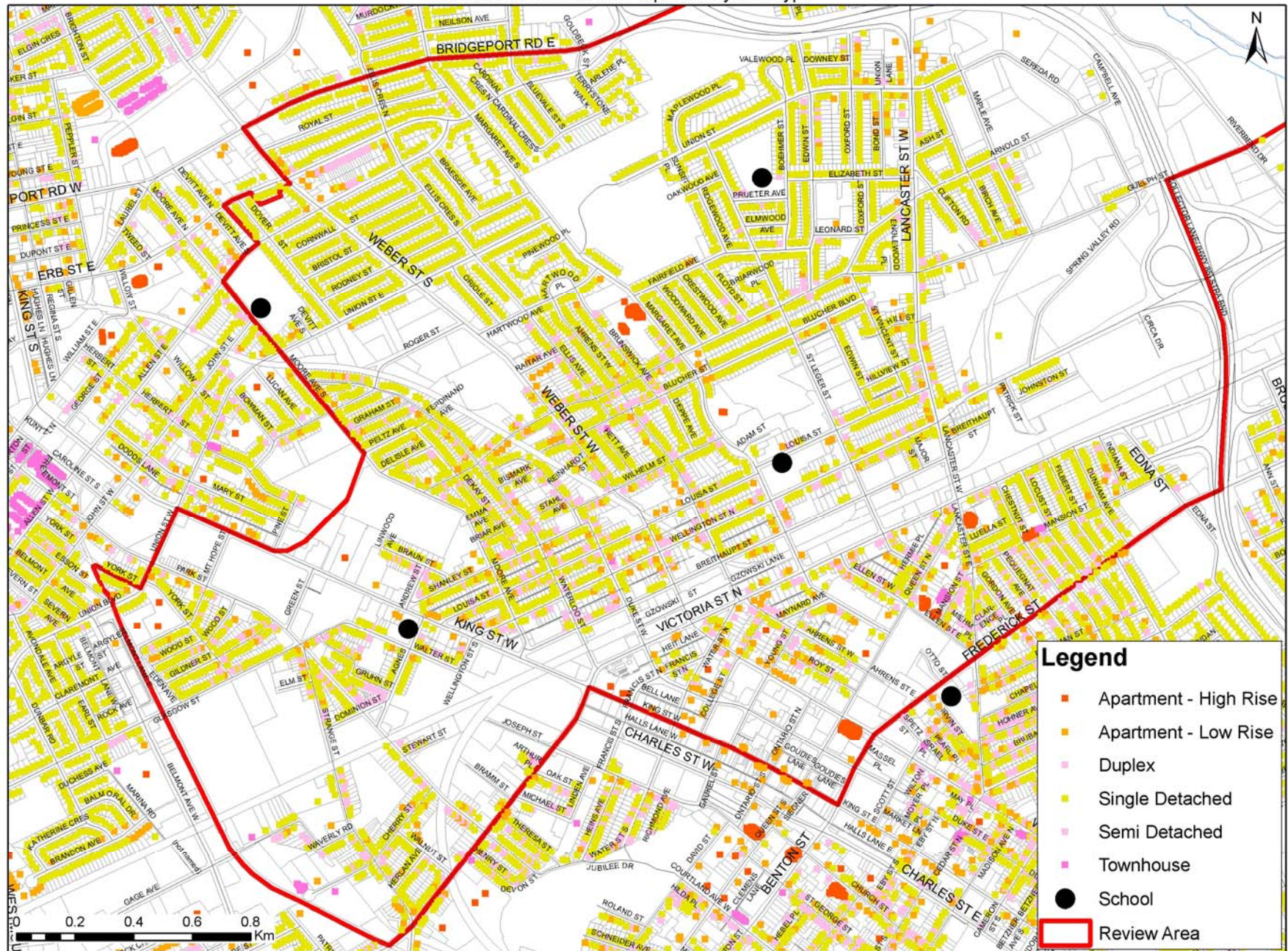
School	Built Capacity	2013	2016	2019
Bridgeport	471	352	392	378
Lexington	550	531	556	599
Falconridge	300	207	276	260
Total	1321	1090	1224	1237

School	2013		2016		2019	
	JK-6	7-8	JK-6	7-8	JK-6	7-8
Lexington	322	209	336	220	359	240
Elizabeth Ziegler	360	189	344	202	330	210

East Kitchener-Waterloo Accommodation Review Distribution of Residential Properties By Unit Type

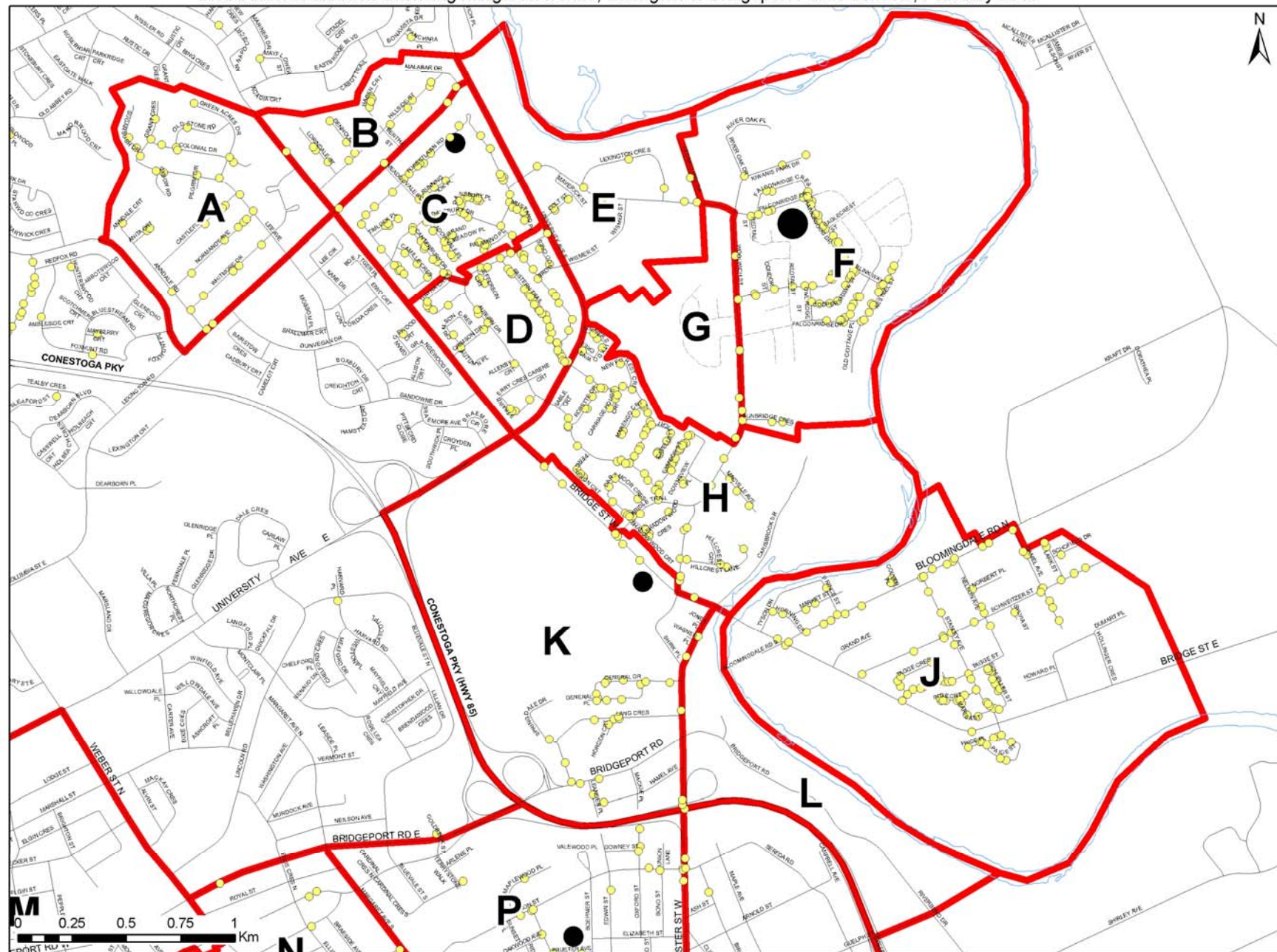


East Kitchener-Waterloo Accommodation Review Distribution of Residential Properties By Unit Type



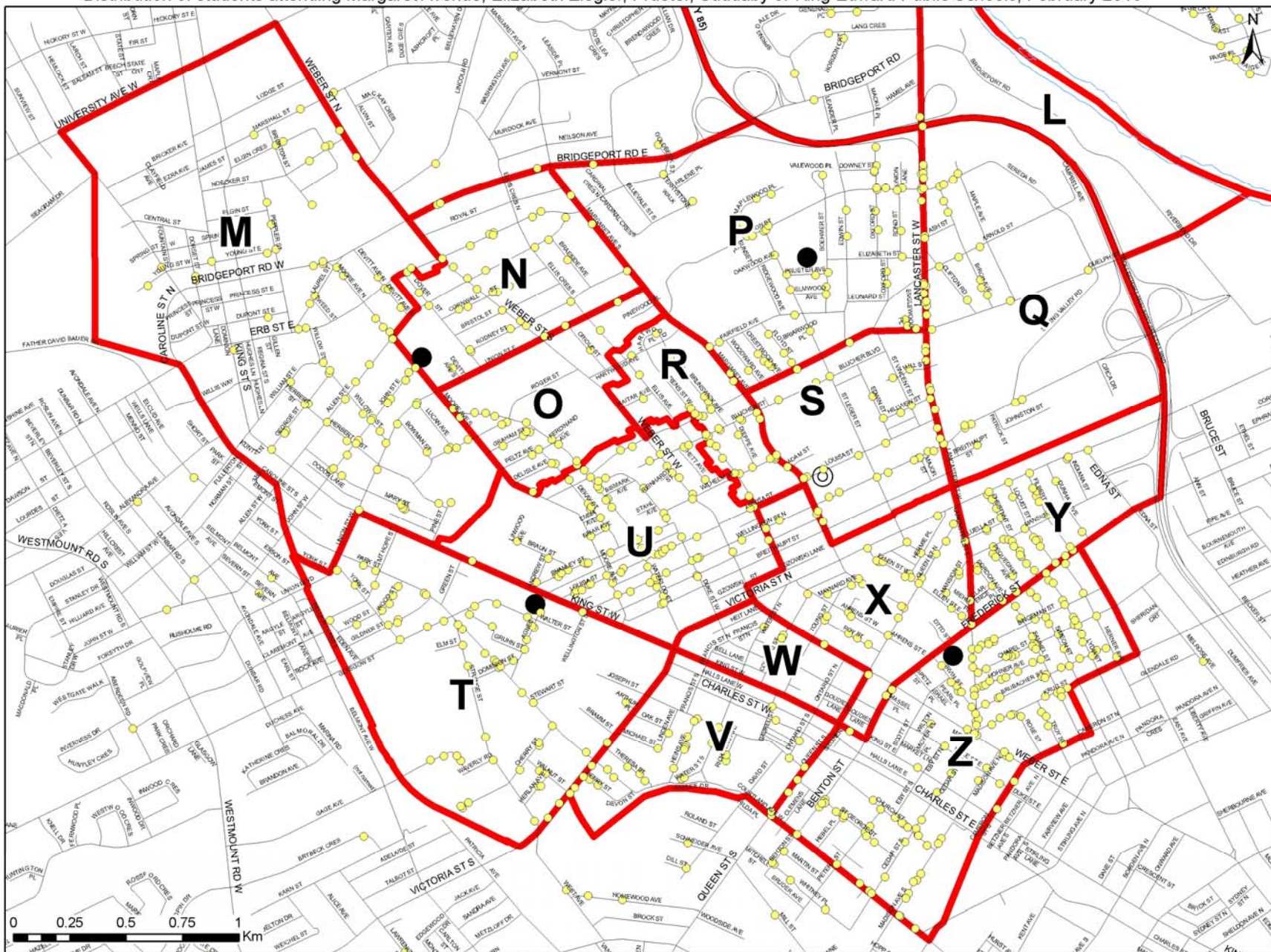
East Kitchener-Waterloo Accommodation Review

Distribution of students attending Margaret Avenue, Lexington or Bridgeport Public Schools, February 2010



Area	Average JK-8 student yield/100 units
A	0.17
B	0.18
C	0.27
D	0.19
E	0.13
F	0.37
G	0.33
H	0.20
J	0.27
K	0.16

East Kitchener-Waterloo Accommodation Review
Distribution of students attending Margaret Avenue, Elizabeth Ziegler, Prueter, Suddaby or King Edward Public Schools, February 2010



Area	Average JK-8 student yield/100 units
M	0.20
N	0.11
O	0.13
P	0.13
Q	0.12
R	0.11
S	0.13
T	0.14
U	0.14
V	0.17
W	0.05
X	0.11
Y	0.15
Z	0.15

410 Falconridge Drive Property



Lexington Public School

