

Woolwich/Wellesley Townships

Elementary Schools Pupil Accommodation Review **Accommodation Review Committee Meeting #13**

June 6, 2012

Linwood P.S. Library 6:30 – 8:00 pm



Waterloo Region
District School Board

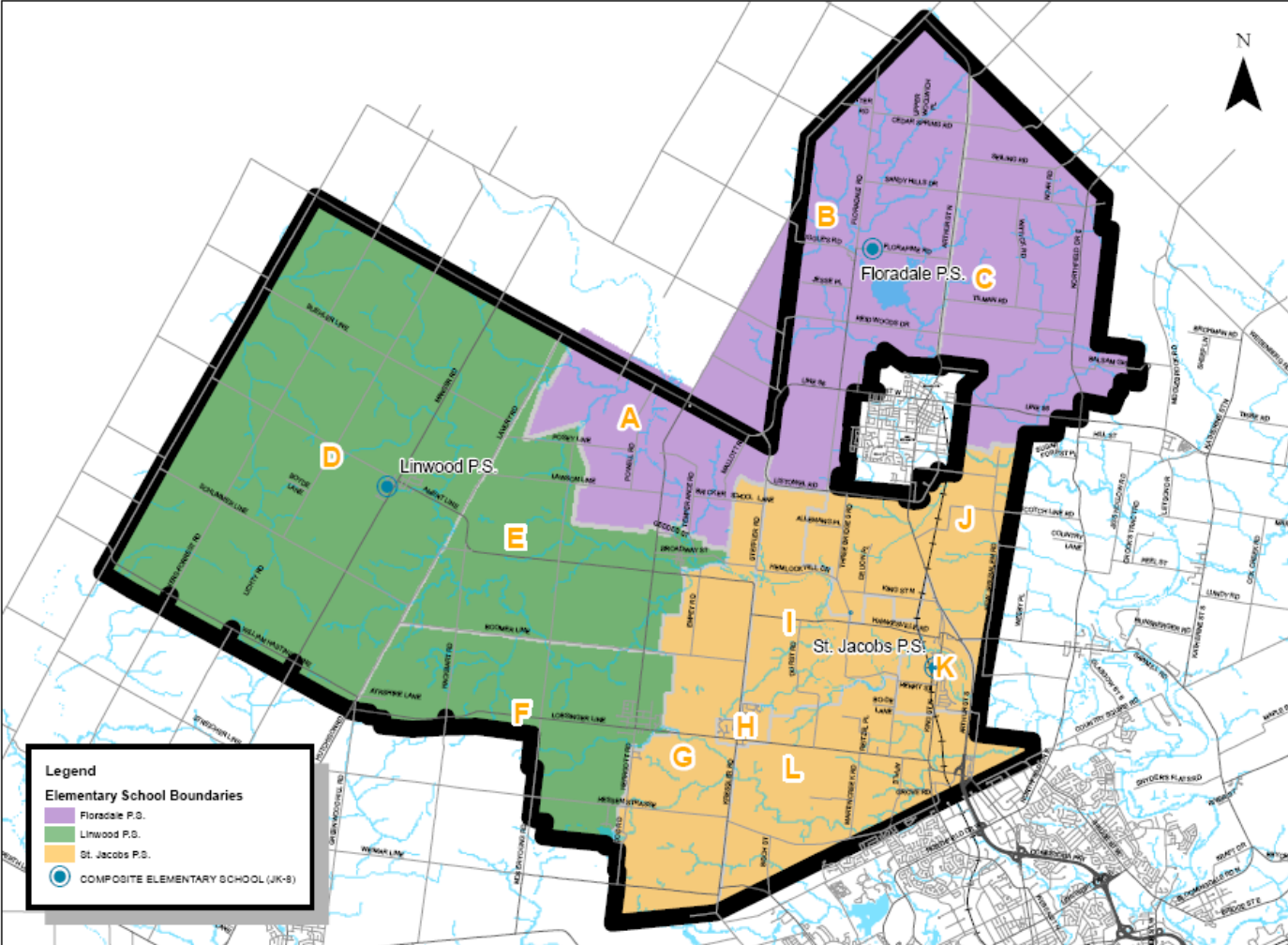
Agenda

- 1. Welcome**
- 2. ARC Meeting # 12 – Draft Minutes**
- 3. Scenario Evaluation (Scenarios 2, 3, 6, 7)**
- 4. Scenario Capital Requirements**
- 5. Future Meeting Dates/Times**



3. Scenario Evaluation – Scenario 2

Woolwich and Wellesley Townships Review: Scenario 2



- Details
- Three Bridges PS closed. Students directed to St. Jacobs PS
- All else remains same

Scenario 2

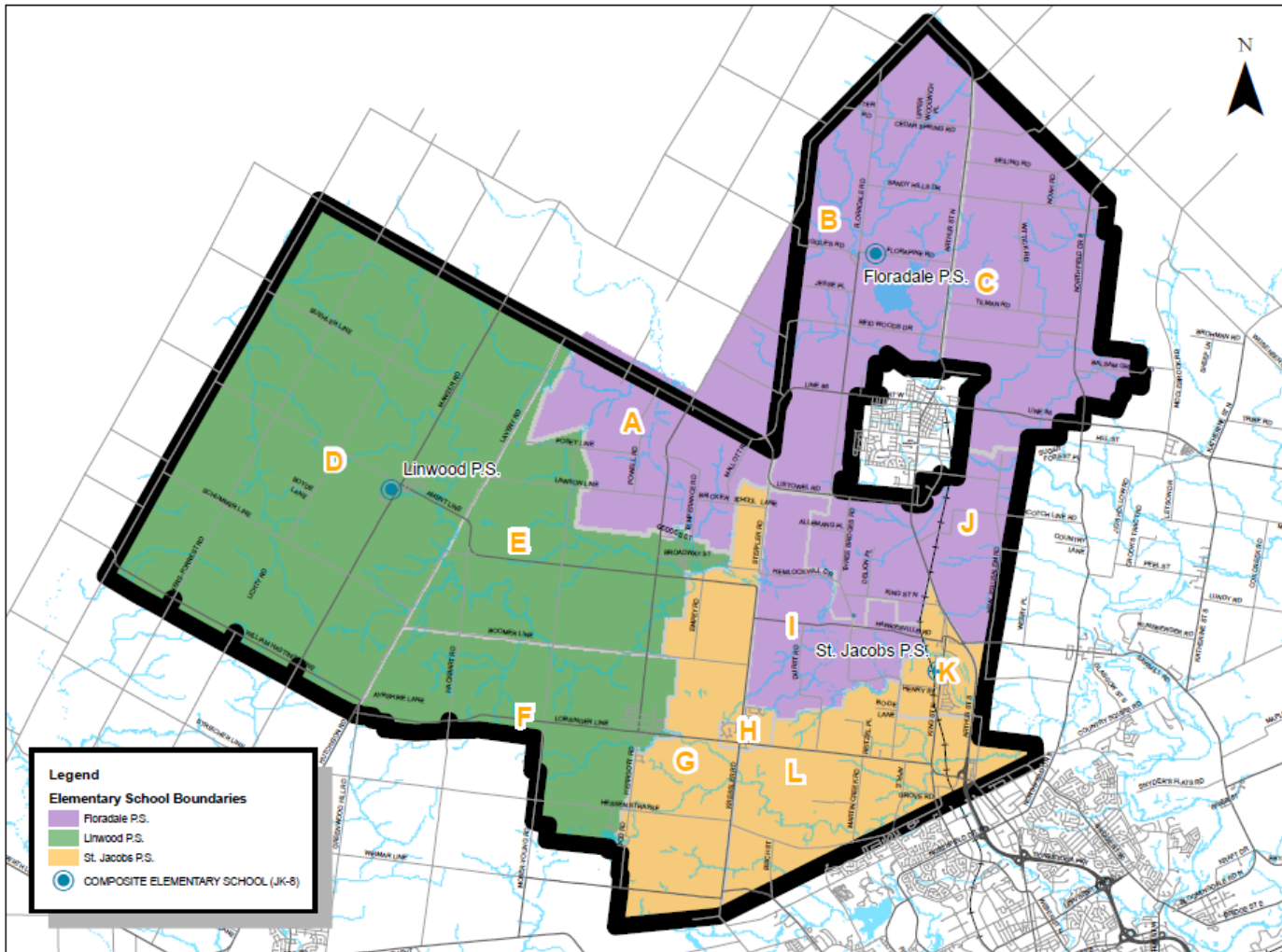
School	Built Capacity	Capacity with FDK	2012			2014			2016			2018			2020		
			JK-6	7-8	Total	JK-6	7-8	Total	JK-6	7-8	Total	JK-6	7-8	Total	JK-6	7-8	Total
Floradale P.S.	322	322	189	56	245	182	58	240	177	65	242	201	41	242	212	52	264
Linwood P.S.	510	519	359	96	455	369	87	456	381	91	472	397	88	485	400	101	501
St. Jacobs P.S.	348	403	271	67	338	278	78	356	298	83	381	303	87	390	313	84	397
Three Bridges P.S.	92	95	0	0	0	0	0	0	0	0	0	0	0	0	0	0	0
Total	1180	1244	819	219	1038	829	223	1052	856	239	1095	901	216	1117	925	237	1162

3. Scenario Evaluation – Scenario 2

Objective	Objective Met?	Comments
Ensure equitable student access to a community school by having defined attendance area boundaries that relate geographically to the community it is located in.	<input checked="" type="checkbox"/>	In general boundaries relate geographically to communities, except for Area A (in Floradale boundary but closer to Linwood)
Where possible organize school attendance boundaries to minimize distance to school (time on bus)	<input checked="" type="checkbox"/>	In general boundaries minimize distance to school except for Area A (in Floradale boundary but closer to Linwood)
Address student transitions where changes proposed.	TBD	Transitions not yet discussed
Have regard for Board policy 3002; Elementary School Size and Configuration, recognizing the challenges of rural areas.	<input type="checkbox"/>	Does not seem to meet objective. Floradale enrolment significantly less than Linwood, St, Jacobs.
Support the efficient use of capital and operating resources through the consideration of facility condition, accessibility, and equitable access to educational amenities.	TBD	Three Bridges PS closed, removes maintenance/operations costs at that facility. Capital needed to implement Scenario 2 not discussed yet.
Maximize the number of students accommodated in permanent capacity	<input type="checkbox"/>	St. Jacobs PS likely require 1 or 2 portables in the longer term
Maximize the use of existing capacity within facilities	<input type="checkbox"/>	Three Bridges closed (existing capacity) Floradale PS underutilized
Recognize the unique needs of communities served by different schools through the reasonable accommodation of cultural differences.	TBD	Directed Three Bridges community to St. Jacobs. No discussions thus far as to how to accommodate within the existing school organization. Undetermined at this time?

3. Scenario Evaluation – Scenario 3

Woolwich and Wellesley Townships Review: Scenario 3








•Details

- Three Bridges PS closed. Students directed to St. Jacobs PS and Floradale PS.
- St. Jacobs PS gets Areas G, H, K, L.
- Floradale PS gets Areas I, J from St. Jacobs PS.

Scenario 3

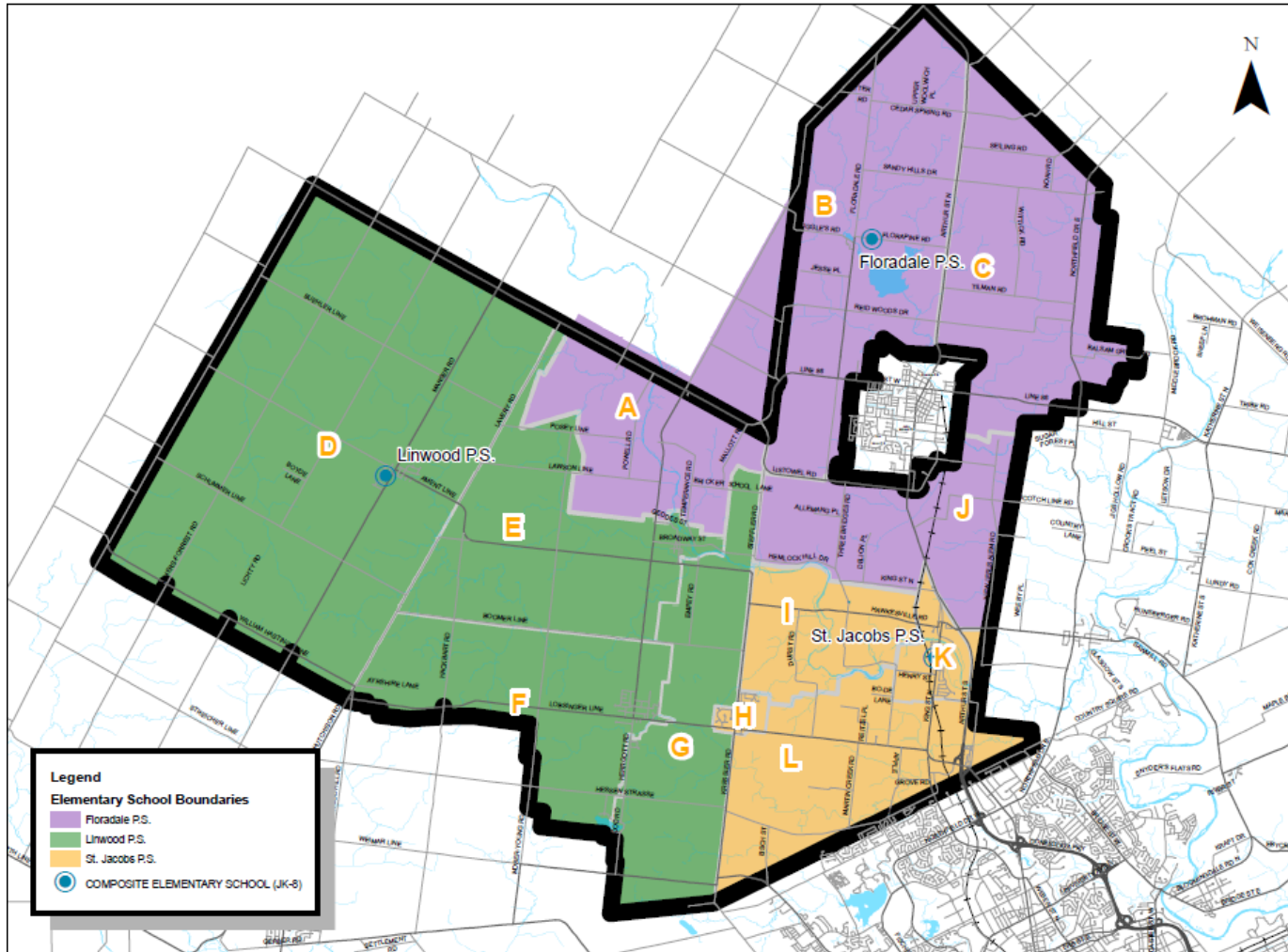
School	Built Capacity	Capacity with FDK	2012			2014			2016			2018			2020		
			JK-6	7-8	Total	JK-6	7-8	Total	JK-6	7-8	Total	JK-6	7-8	Total	JK-6	7-8	Total
Floradale P.S.	322	322	217	66	283	209	67	276	203	75	278	223	53	276	230	62	292
Linwood P.S.	510	519	359	96	455	369	87	456	381	91	472	397	88	485	400	101	501
St. Jacobs P.S.	348	403	247	59	307	256	70	326	276	75	351	285	76	361	297	76	373
Three Bridges P.S.	92	95	0	0	0	0	0	0	0	0	0	0	0	0	0	0	0
Total	1180	1244	823	221	1045	834	224	1058	860	241	1101	905	217	1122	927	239	1166

3. Scenario Evaluation – Scenario 3

Objective	Objective Met?	Comments
Ensure equitable student access to a community school by having defined attendance area boundaries that relate geographically to the community it is located in.		Defined boundaries however, do not relate geographically to communities. Portions of Floradale P S boundary closer to Linwood and St. Jacobs communities.
Where possible organize school attendance boundaries to minimize distance to school (time on bus)		Portion of Floradale boundary closer to Linwood PS and St. Jacobs PS.
Address student transitions where changes proposed.	TBD	Transitions not yet discussed
Have regard for Board policy 3002; Elementary School Size and Configuration, recognizing the challenges of rural areas.		Larger enrolment at Floradale PS creating more equitable distribution of enrolment between Floradale/St. Jacobs
Support the efficient use of capital and operating resources through the consideration of facility condition, accessibility, and equitable access to educational amenities.	TBD	Three Bridges PS closed, remove maintenance/operations costs at that facility. Capital needed to implement Scenario 3 not discussed yet.
Maximize the number of students accommodated in permanent capacity		All students housed in permanent capacity. (1 portable possible at St. Jacobs PS in the long term)
Maximize the use of existing capacity within facilities		Three Bridges closed (existing capacity) Retained facilities fully utilized .
Recognize the unique needs of communities served by different schools through the reasonable accommodation of cultural differences.	TBD	Directed Three Bridges community to St. Jacobs/Floradale. No discussions thus far as to how to accommodate within the existing school organizations. Some of Three Bridges population may be more comfortable attending Floradale PS than St. Jacobs PS

3. Scenario Evaluation – Scenario 6

Woolwich and Wellesley Townships Review: Scenario 6



• Details






• Three Bridges PS closed. Students directed to St. Jacobs PS except Area J which is directed to Floradale. Area G directed to Linwood PS.

• Steffler Rd. Area (b/w Area A, J directed to Floradale)

Scenario 6

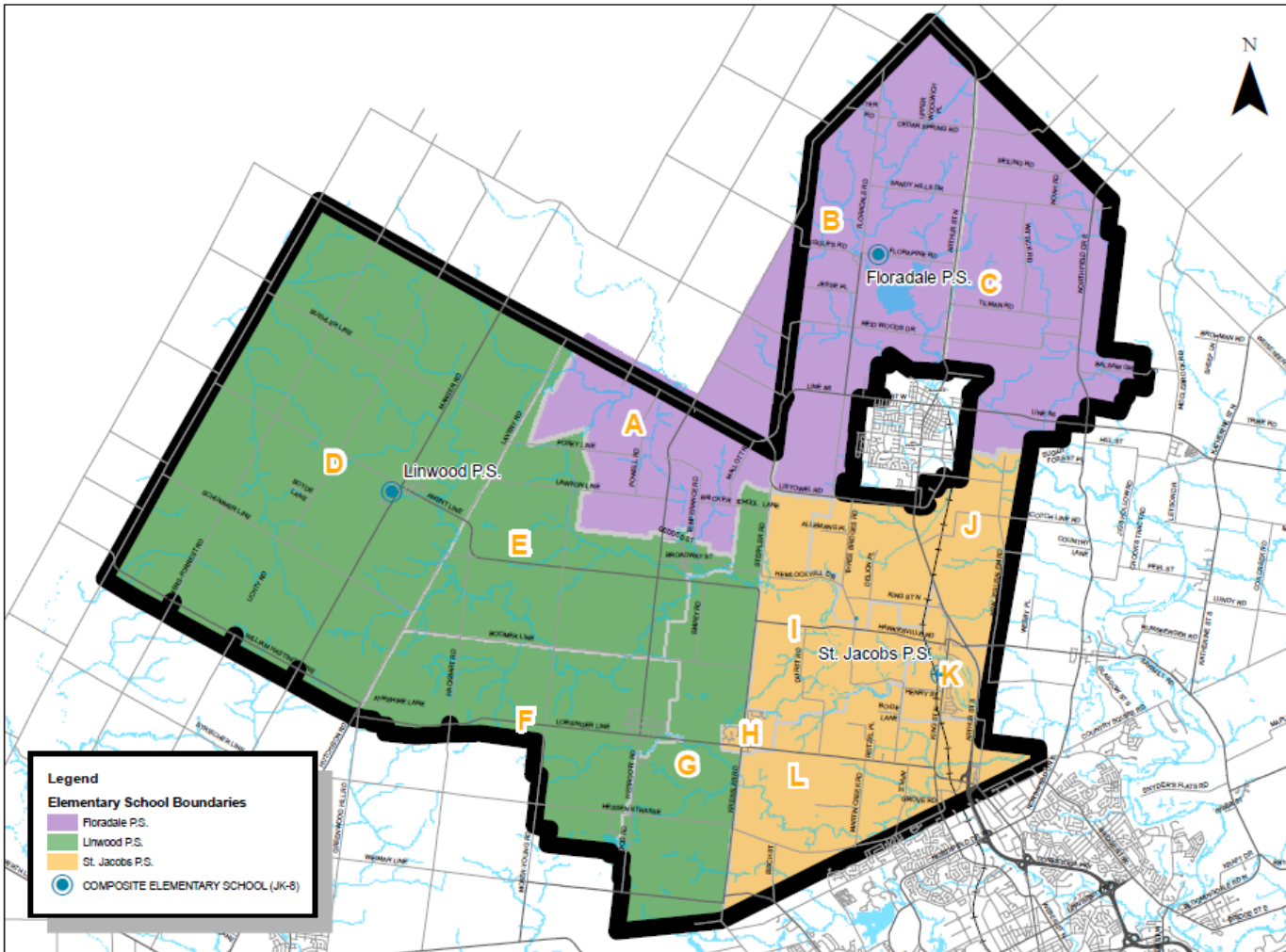
School	Built Capacity	Capacity with FDK	2012			2014			2016			2018			2020		
			JK-6	7-8	Total	JK-6	7-8	Total	JK-6	7-8	Total	JK-6	7-8	Total	JK-6	7-8	Total
Floradale P.S.	322	322	213	64	277	206	66	272	198	74	272	222	51	273	232	60	292
Linwood P.S.	510	519	372	97	469	382	89	471	393	94	487	407	94	501	411	104	515
St. Jacobs P.S.	348	403	237	58	295	247	70	317	270	74	344	278	71	349	286	76	362
Three Bridges P.S.	92	95	0	0	0	0	0	0	0	0	0	0	0	0	0	0	0
Total	1180	1244	822	219	1041	835	225	1060	861	242	1103	907	216	1123	929	240	1169

3. Scenario Evaluation – Scenario 6

Objective	Objective Met?	Comments
Ensure equitable student access to a community school by having defined attendance area boundaries that relate geographically to the community it is located in.		Defined boundaries however do not relate geographically to communities. Portions of Floradale P S boundary closer to Linwood and St. Jacobs communities.
Where possible organize school attendance boundaries to minimize distance to school (time on bus)		Portion of Floradale boundary closer to Linwood PS and St. Jacobs PS.
Address student transitions where changes proposed.	TBD	Transitions not yet discussed
Have regard for Board policy 3002; Elementary School Size and Configuration, recognizing the challenges of rural areas.		Larger enrolment at Floradale PS creating more equitable distribution of enrolment between Floradale/St. Jacobs
Support the efficient use of capital and operating resources through the consideration of facility condition, accessibility, and equitable access to educational amenities.	TBD	Three Bridges PS closed, remove maintenance/operations costs at that facility. Capital needed to implement Scenario 6 not discussed yet.
Maximize the number of students accommodated in permanent capacity		All students housed in permanent capacity.
Maximize the use of existing capacity within facilities		Three Bridges closed (existing capacity) Retained facilities fully utilized
Recognize the unique needs of communities served by different schools through the reasonable accommodation of cultural differences.	TBD	Directed Three Bridges community to St. Jacobs/Floradale/Linwood No discussions thus far as to how to accommodate within the existing school organizations. Some of Three Bridges population may be more comfortable attending Floradale PS than St. Jacobs PS

3. Scenario Evaluation – Scenario 7

Woolwich and Wellesley Townships Review: Scenario 7








•Details

•Three Bridges PS closed. Students directed to St. Jacobs PS except Area G which is directed to Linwood.

Scenario 7

School	Built Capacity	Capacity with FDK	2012			2014			2016			2018			2020		
			JK-6	7-8	Total	JK-6	7-8	Total	JK-6	7-8	Total	JK-6	7-8	Total	JK-6	7-8	Total
Floradale P.S.	322	322	189	56	245	182	58	240	177	65	242	201	41	242	212	52	264
Linwood P.S.	510	519	372	97	469	382	89	471	393	94	487	407	94	501	411	104	515
St. Jacobs P.S.	348	403	258	66	325	265	76	341	286	80	366	293	81	374	302	81	383
Three Bridges P.S.	92	95	0	0	0	0	0	0	0	0	0	0	0	0	0	0	0
Total	1180	1244	819	219	1039	829	223	1052	856	239	1095	901	216	1117	925	237	1162

3. Scenario Evaluation – Scenario 7

Objective	Objective Met?	Comments
Ensure equitable student access to a community school by having defined attendance area boundaries that relate geographically to the community it is located in.		Defined boundaries however do not relate geographically to communities. Portions of Floradale P S boundary closer to Linwood and portions of Linwood closer to St. Jacobs communities
Where possible organize school attendance boundaries to minimize distance to school (time on bus)		Boundaries do not relate geographically to schools. Portions of Floradale P S boundary closer to Linwood and St. Jacobs communities.
Address student transitions where changes proposed.		Transitions not yet discussed
Have regard for Board policy 3002; Elementary School Size and Configuration, recognizing the challenges of rural areas.		Does not seem to meet objective. Floradale enrolment significantly less than Linwood, St, Jacobs.
Support the efficient use of capital and operating resources through the consideration of facility condition, accessibility, and equitable access to educational amenities.		Three Bridges PS closed, remove maintenance/operations costs at that facility. Capital needed to implement Scenario 7 not discussed yet.
Maximize the number of students accommodated in permanent capacity		All students housed in permanent capacity. (1 portable possible at St. Jacobs PS in the long term)
Maximize the use of existing capacity within facilities		Three Bridges closed (existing capacity) Floradale PS underutilized
Recognize the unique needs of communities served by different schools through the reasonable accommodation of cultural differences.		Three Bridges community directed to St. Jacobs/Linwood . No discussions thus far as to how to accommodate within the existing school organizations.



4. Scenario Capital (and operating) Requirements

Gym space benchmarking JK-8 schools

SCHOOL NAME	ORGANIZATION	Oct 2010 Enrolment	OTG	GYM (ft2)	Gym Programming spaces	Gym ft2 / Student Enrolment	Gym ft2/OTG	Gym ft2/ Student Enrolment (All Schools)	Gym ft2/OTG Ranking (All Schools)	Gym ft2/ Student Enrolment Ranking (JK-8)	Gym ft2/OTG Ranking (JK-8)
CLEMENS MILL	JK-8	796	472	4622	2	5.81	9.79	8.00	37	1	9
LESTER B. PEARSON	JK-8	736	607	4830	2	6.56	7.96	16.00	23	2	4
LAURELWOOD	JK-8	717	366	4848	2	6.76	13.25	19.00	83	3	16
CONESTOGO	JK-8	338	224	2415	1	7.14	10.78	26.00	53	4	13
EDNA STAEBLER	JK-8	714	639	5286	2	7.40	8.27	28.00	29	5	7
ST. JACOBS	JK-8	319	348	2376	1	7.45	6.83	29.00	14	6	1
LINWOOD	JK-8	469	510	3712	2	7.91	7.28	33.00	17	7	2
WELLESLEY	JK-8	643	635	5232	2	8.14	8.24	37.00	28	8	6
BADEN	JK-8	579	575	4724	2	8.16	8.22	38.00	27	9	5
WOODLAND PARK	JK-8	563	463	4644	2	8.25	10.03	39.00	41	10	11
STEWART AVENUE	JK-8	571	483	4909	2	8.60	10.16	42.00	45	11	12
HESPELER	JK-8	579	686	5024	2	8.68	7.32	44.00	18	12	3
FOREST GLEN	JK-8	543	443	4817	2	8.87	10.87	48.00	56	13	14
SILVERHEIGHTS	JK-8	649	418	6634	2	10.22	15.87	54.00	90	14	18
NORTHLAKE WOODS	JK-8	477	492	4900	2	10.27	9.96	55.00	39	15	10
FLORADALE	JK-8	251	322	2818	1	11.23	8.75	68.00	33	16	8
A. R. KAUFMAN	JK-8	438	440	5085	2	11.61	11.56	72.00	67	17	15
BRESLAU	JK-8	483	325	5800	2	12.01	17.85	73.00	95	18	19
CEDAR CREEK	JK-8	422	256	6268	2	14.85	24.48	88.00	100	19	21
LINCOLN HEIGHTS	JK-8	330	409	5601	2	16.97	13.69	97.00	85	20	17
THREE BRIDGES	01-8	83	92	1659	1	19.99	18.03	100.00	96	21	20



4. Scenario Capital (and operating) Requirements

Library Assessments

School	Score (2006)	Subsequent Significant Changes
Alison Park	12	School in temporary location, closing 2012
Ayr	13	
Blair Road	18	
Bridgeport	12	Library moved to new, renovated location. – significant improvement
Chalmers	17	
Conestogo	17	
Courtland	17	Some minor renovations have improved the facility
Crestview	18	
Dickson	12	
Floradale	15	Old school closed – new school and library.
Grand View C	17	Old school will close June 2012 – new school and library.
Grandview NH	12	Library has been renovated – significant improvement.
Hillcrest	19	

Hillcrest	19	
JF Carmichael	17	
John Mahood	19	
MacKenzie King	17	
Manchester	14	
Meadowlane	19	
New Dundee	14	
Prueter	19	
Queen Elizabeth	16	
Riverside	13	
Rockway	17	
Ryerson	16	Old school closed New school and library.
	19	
St. Jacob's	18	
Three Bridges	13	Library moved to new location in school. Some improvement.
Westmount	13	Computer lab moving out of library & some renos, March 2012.
Wilson Ave	19	Some renovations have improved facility.
Winston Churchill	18	

4. Scenario Capital (and operating) Requirements

Status Quo

School	Gym	Library	Spec. Ed	Accessibility	Maintenance
Floradale PS	<input type="checkbox"/>	<input type="checkbox"/>		<input type="checkbox"/>	<input checked="" type="checkbox"/>
Linwood PS	<input type="checkbox"/>	<input type="checkbox"/>		<input checked="" type="checkbox"/>	<input checked="" type="checkbox"/>
St. Jacobs PS	<input checked="" type="checkbox"/>	<input checked="" type="checkbox"/>		<input checked="" type="checkbox"/>	<input checked="" type="checkbox"/>
Three Bridges	<input type="checkbox"/>	<input type="checkbox"/>		<input checked="" type="checkbox"/>	<input checked="" type="checkbox"/>



4. Scenario Capital Requirements

Scenario 2, 3, 6, 7

School	Gym	Library	Spec. Ed	Accessibility	Maintenance
Floradale PS	<input type="checkbox"/>	<input type="checkbox"/>		<input type="checkbox"/>	<input checked="" type="checkbox"/>
Linwood PS	<input type="checkbox"/>	<input type="checkbox"/>		<input checked="" type="checkbox"/>	<input checked="" type="checkbox"/>
St. Jacobs PS	<input checked="" type="checkbox"/>	<input checked="" type="checkbox"/>		<input checked="" type="checkbox"/>	<input checked="" type="checkbox"/>
Three Bridges PS (closed)	<input type="checkbox"/>	<input type="checkbox"/>	<input type="checkbox"/>	<input type="checkbox"/>	<input type="checkbox"/>



Woolwich & Wellesley Townships Accommodation Review

Summer Break

- **July – August – no meetings**



ARC # 14

- **Thursday September 20, 2012 : 6:30- 8:00 p.m. Floradale PS**