

# **Grand River South/Sunnyside**

## **Elementary Schools Pupil Accommodation Review**

### **Accommodation Review Committee Meeting #6**

May 4, 2010

Edna Staebler P.S. Library 4:30 – 6:00  
pm



Waterloo Region  
District School Board

# Agenda

- 1. Welcome/Introductions**
- 3. Tour of Edna Staebler P.S.**
- 2. ARC Meeting # 5 – Draft Minutes approval**
- 3. Draft Review Objectives**
- 4. School Information Profiles**
- 5. Scenario Development**
- 7. Roundtable**
- 8. Future Meeting Dates**



## Draft Objectives

- Provide current and future students in the review area with equitable program opportunities to ensure their success by:
  - Having regard for the Good Schools Standing Committee guiding principles on school size
  - Reviewing elementary school organizations (i.e. JK-6, 7-8, JK-8)
  - Recognizing the distribution of Special Education, French Immersion and English as a Second Language programs
- Support the optimal use of facilities, capital and operating resources through the consideration of:
  - School location
    - Recognize the relationship/identity of community to local elementary school
    - Minimize transportation costs in the long-term by maximizing the number of students within walking distance of a school
  - Facility amenities and condition
    - Priorities for physical accessibility of facilities by the Accessibility Committee
    - Site
    - Safety and security
- Develop a solution that is long-term (approximately 10 years) by taking into consideration:
  - Consistency of feeds to senior elementary and secondary school programs
  - Future development plans and demographic shifts
- Consider student transitions

# School Information Profiles



## School Information Profile

Date: **January/2010**  
Month/Year

SCHOOL PROFILE		
School: <b>Franklin Public School</b>		
Address: <b>371 Franklin Street North, Kitchener, ON N2A 1Y9</b>		
Grade Configuration	JK-6	
Age of Facility	47 years	
Site Size	6.3 ac	2,549 ha
Building Size – GFA	43645 sq ft	4054.75 m <sup>2</sup>
School Capacity (building only, Ministry recognized)	582	
School Capacity (building and porta-pak)	582	
Number of portables	6	
Current enrolment (Total/FTE)	608/545	
Utilization (% Accommodation)	94%	
Historic FTE Enrolment (past 5 years) Based on October 31 Enrolment	Year: 2008	Enrolment: 541.5
	Year: 2007	Enrolment: 527.5
	Year: 2006	Enrolment: 553.5
	Year: 2005	Enrolment: 564.5
	Year: 2004	Enrolment: 545.5
Enrolment FTE Projection (next 5 years)	Year: 2010	Enrolment: 555
	Year: 2011	Enrolment: 540
	Year: 2012	Enrolment: 550
	Year: 2013	Enrolment: 543
	Year: 2014	Enrolment: 532
Feeder Schools:	Grades:	
Number of Out of Boundary Students	132	
Number of Split Grades		
Is there a French Immersion Program?	Yes <input checked="" type="checkbox"/> No <input type="checkbox"/>	

Attachments: Site and Floor Plans with date of original building and any subsequent additions

The ARC may customize the Board's generic School Information Profile to the schools under review. The School Information Profile must include the four considerations:

**Section 1: Value to the Student**

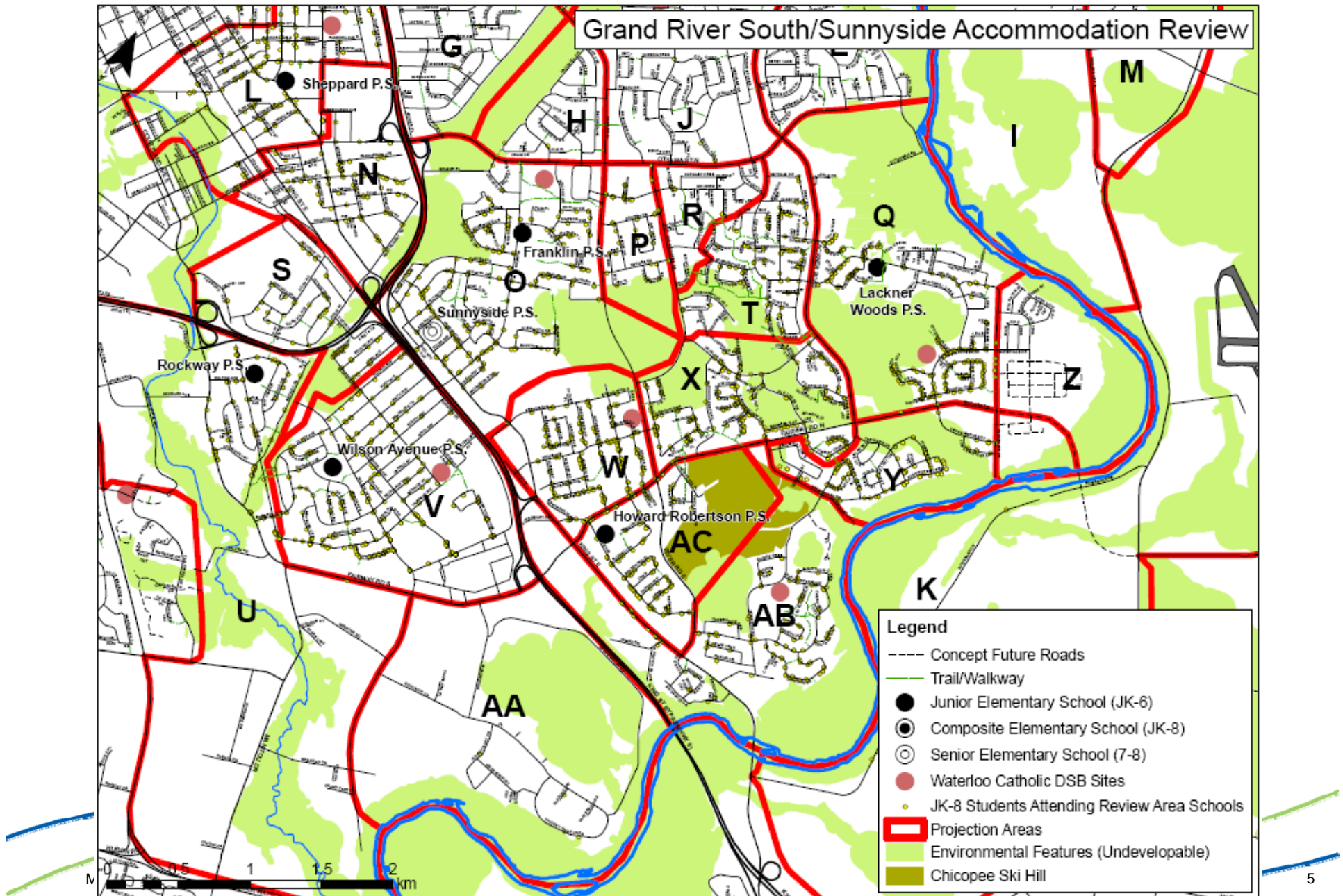
**Section 2: Value to the Board**

**Section 3: Value to the Community**

**Section 4: Value to the Local Economy**

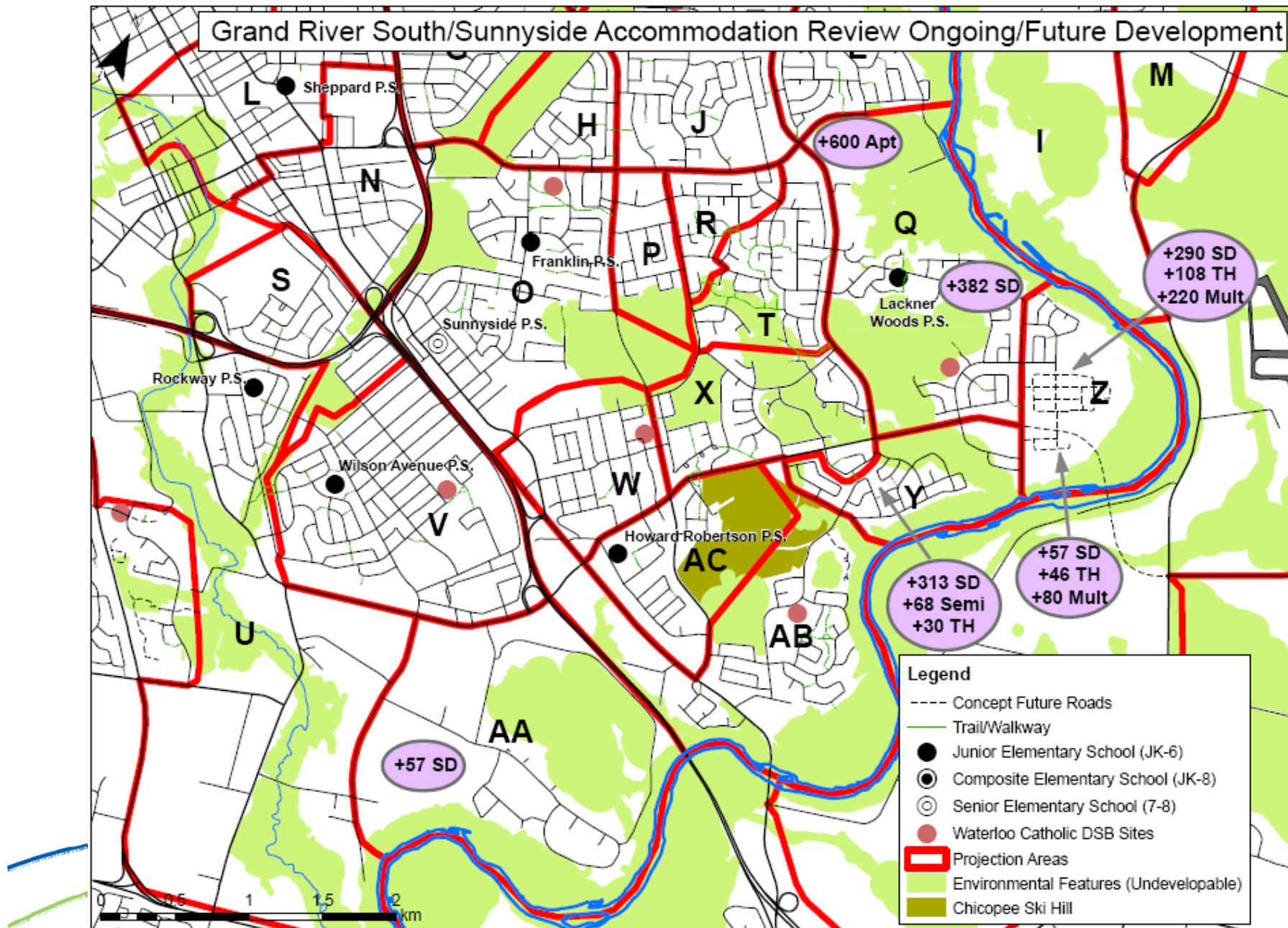


## Additional Resources (context map)

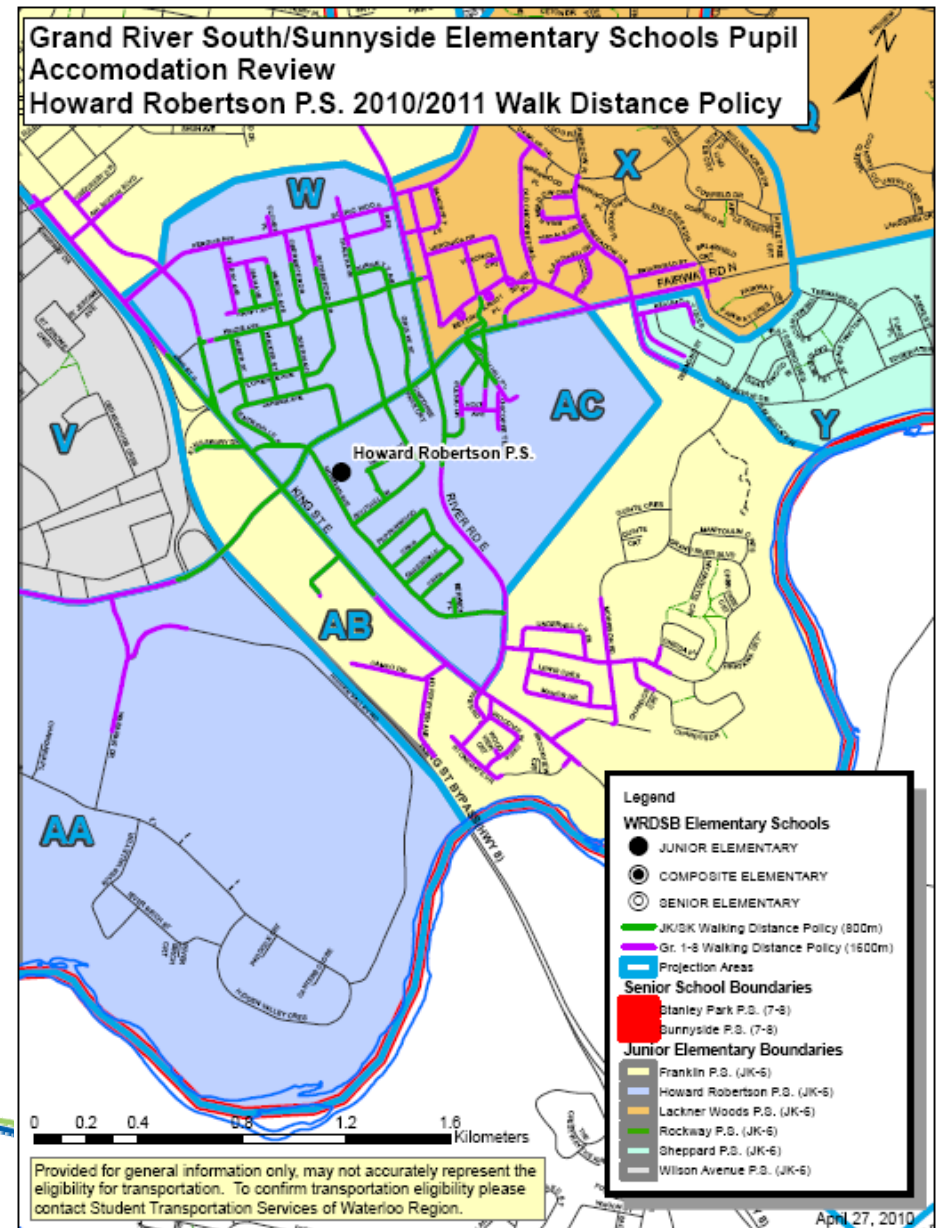
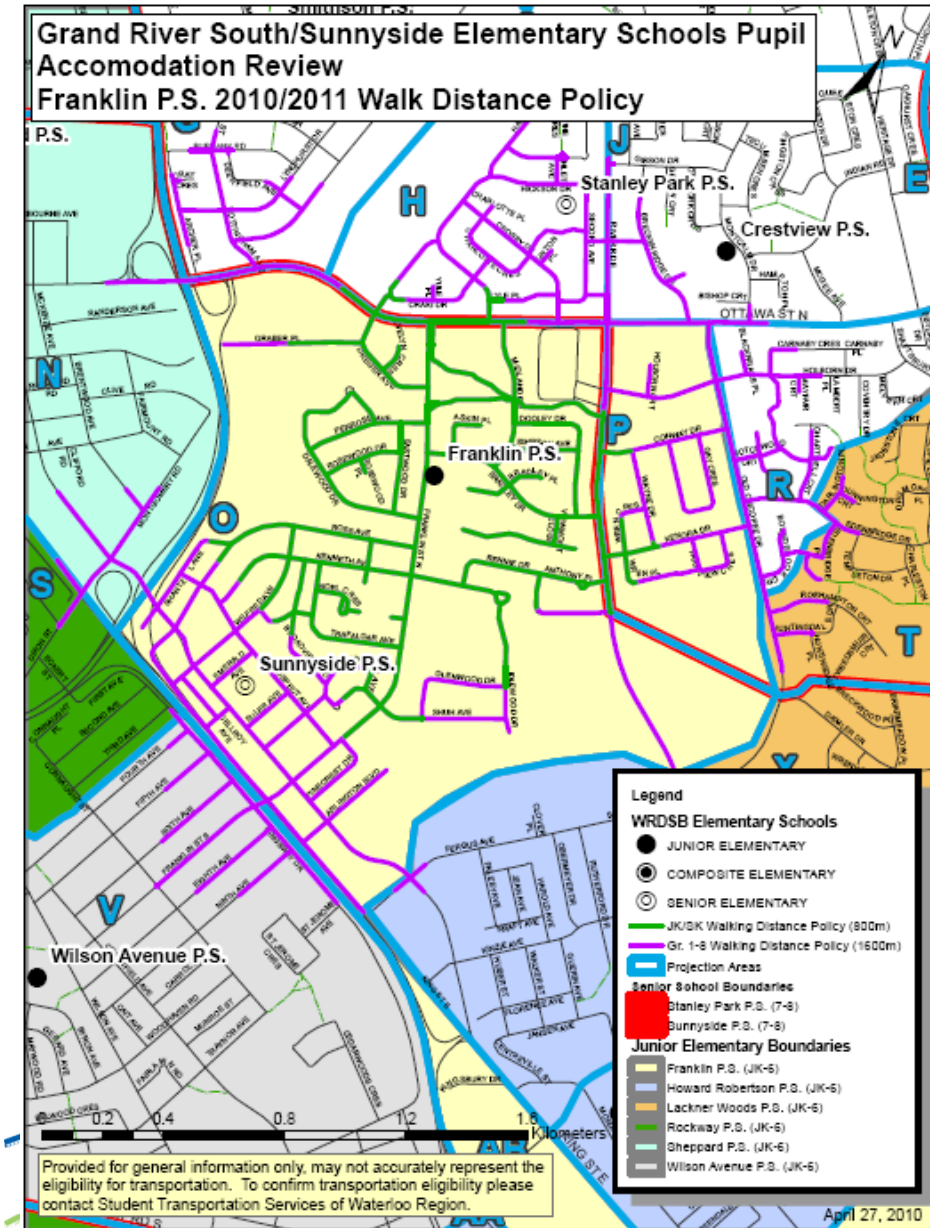




## Additional Resources (development context map)

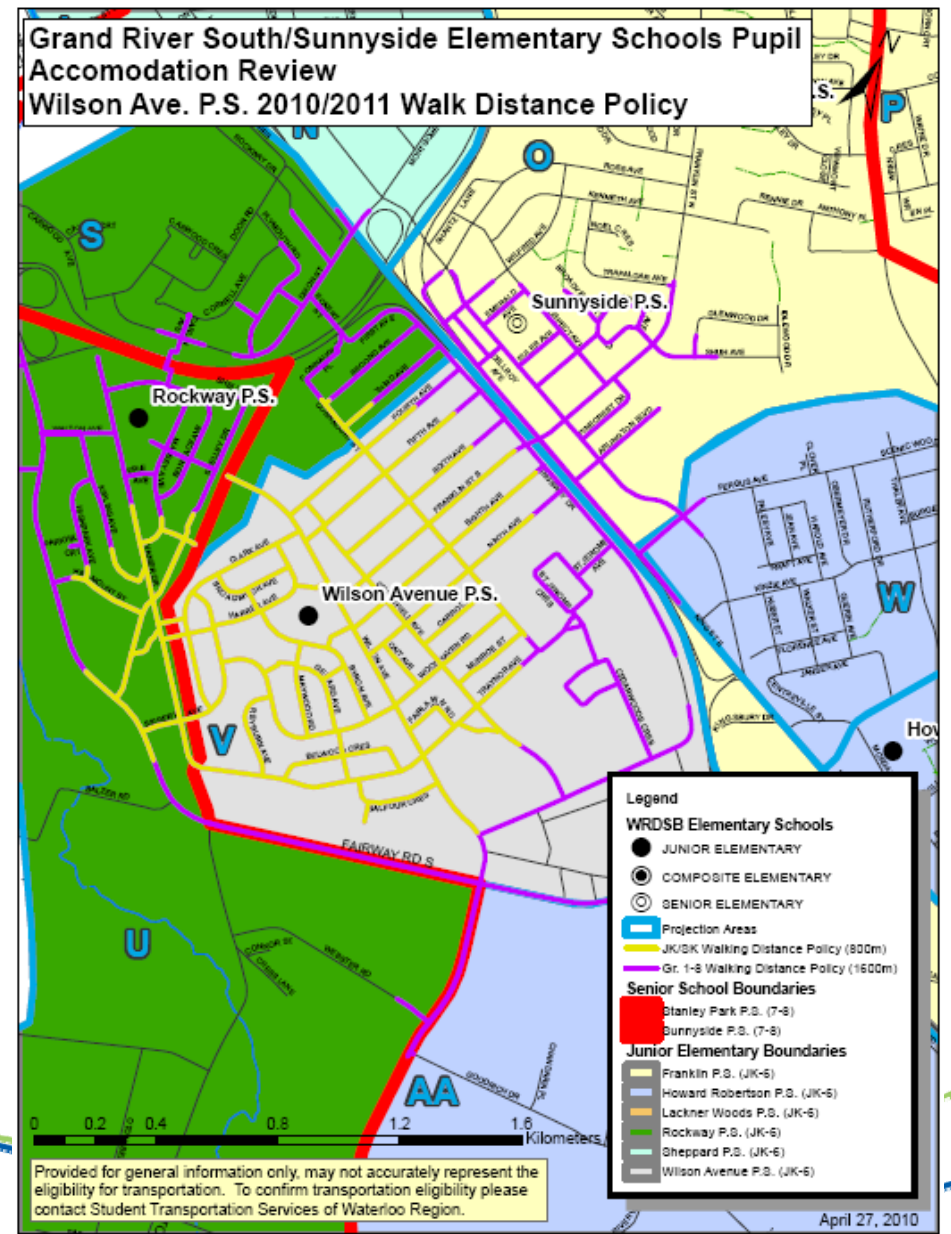
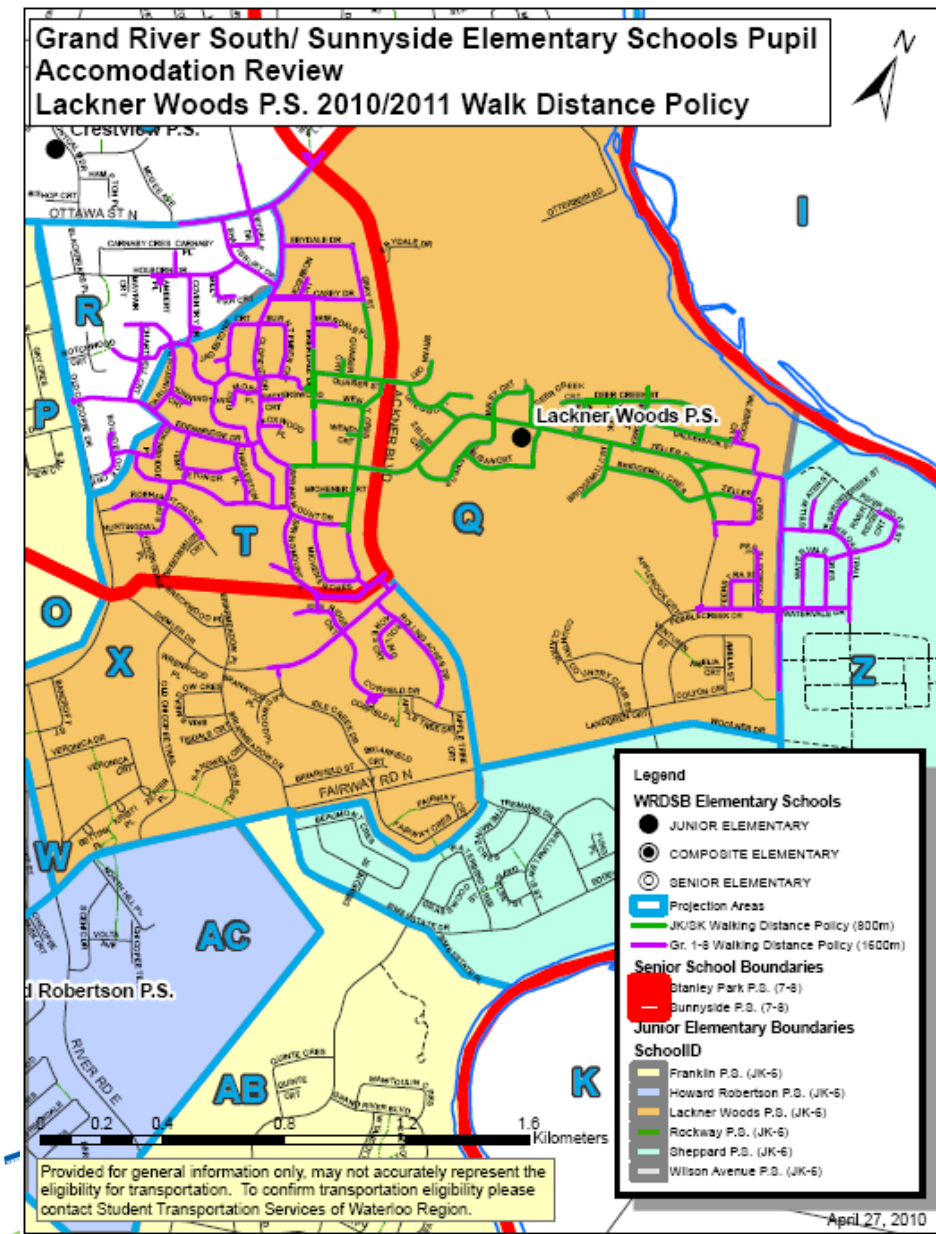


# Additional Resources (walk distance maps)



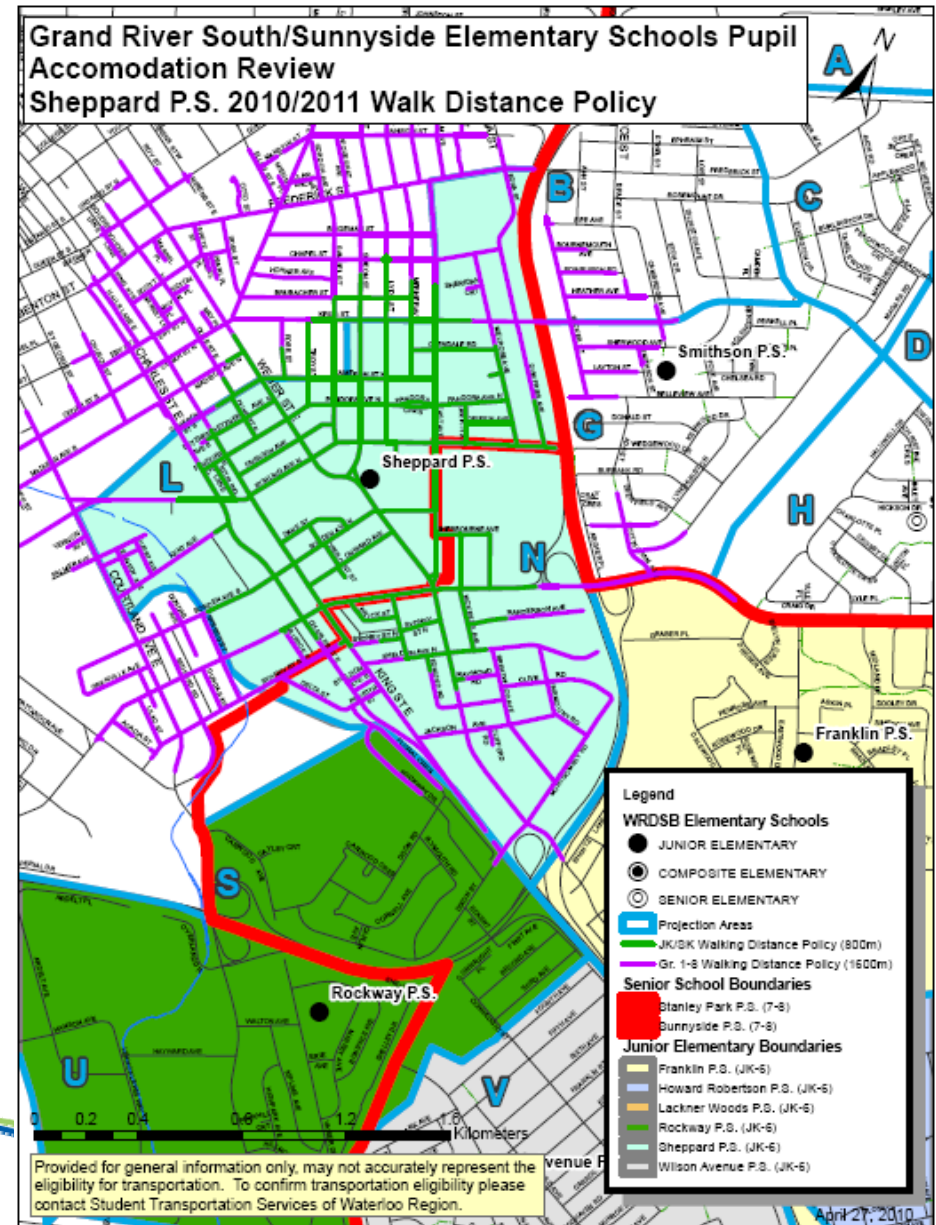
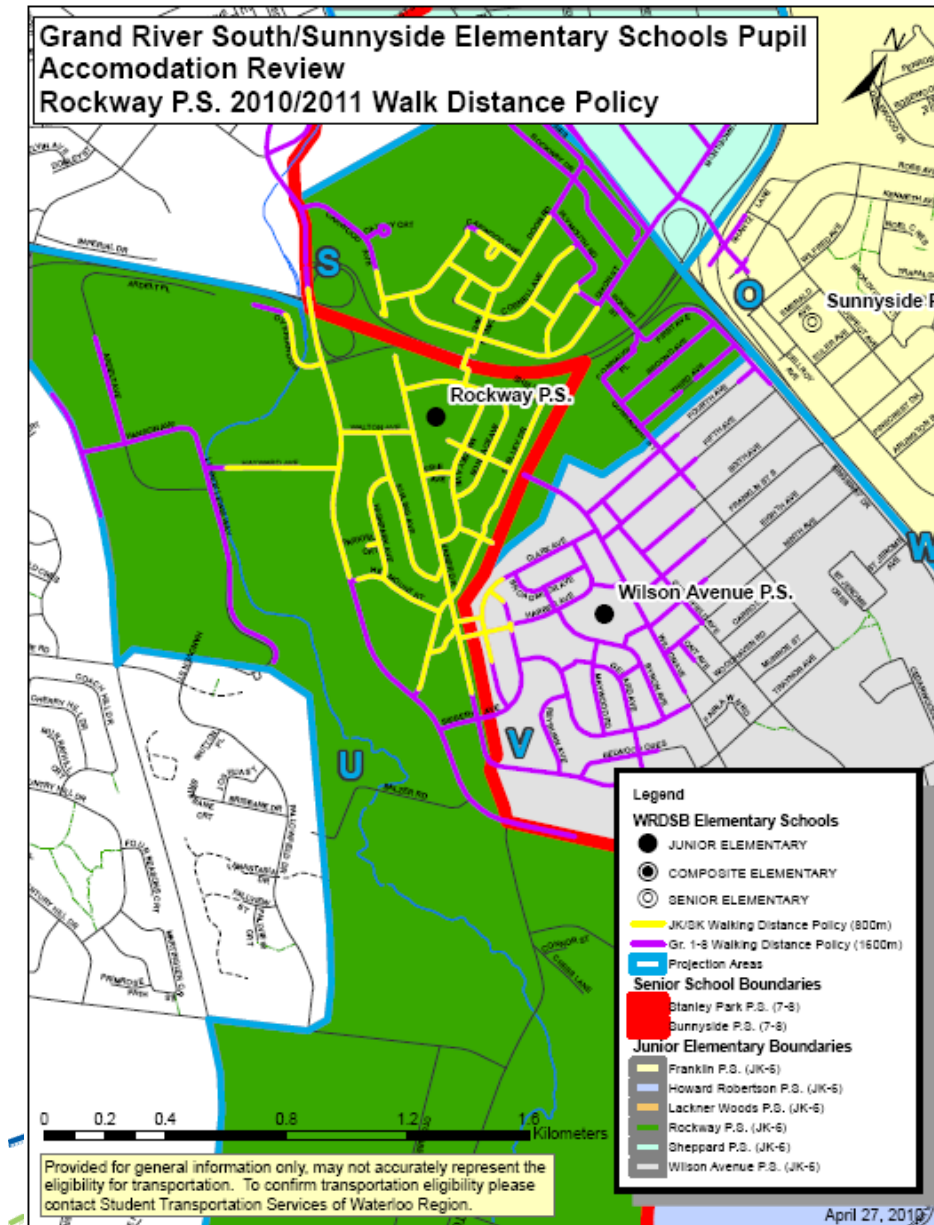


# Additional Resources (walk distance maps)

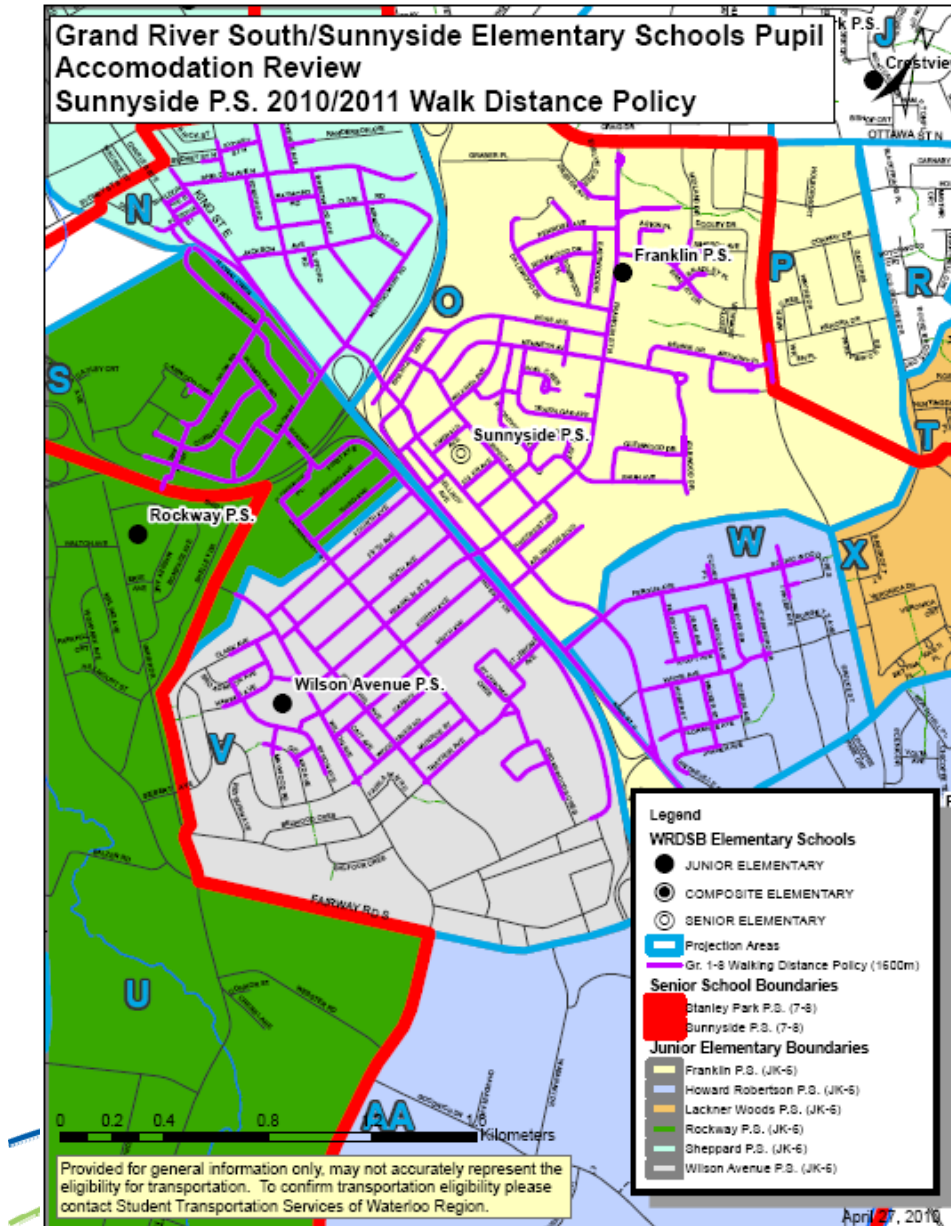




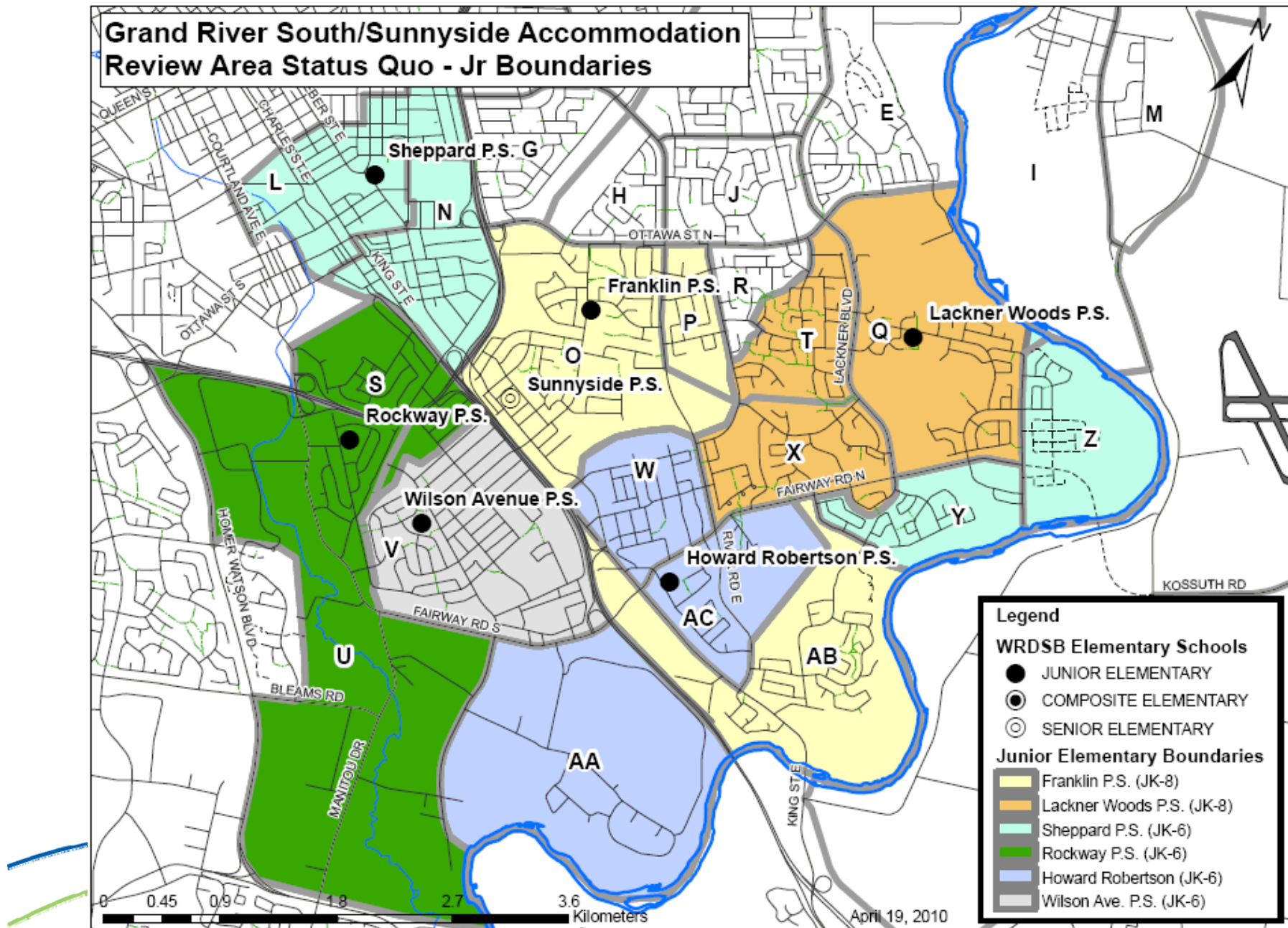
# Additional Resources (walk distance maps)



# Additional Resources (walk distance maps)

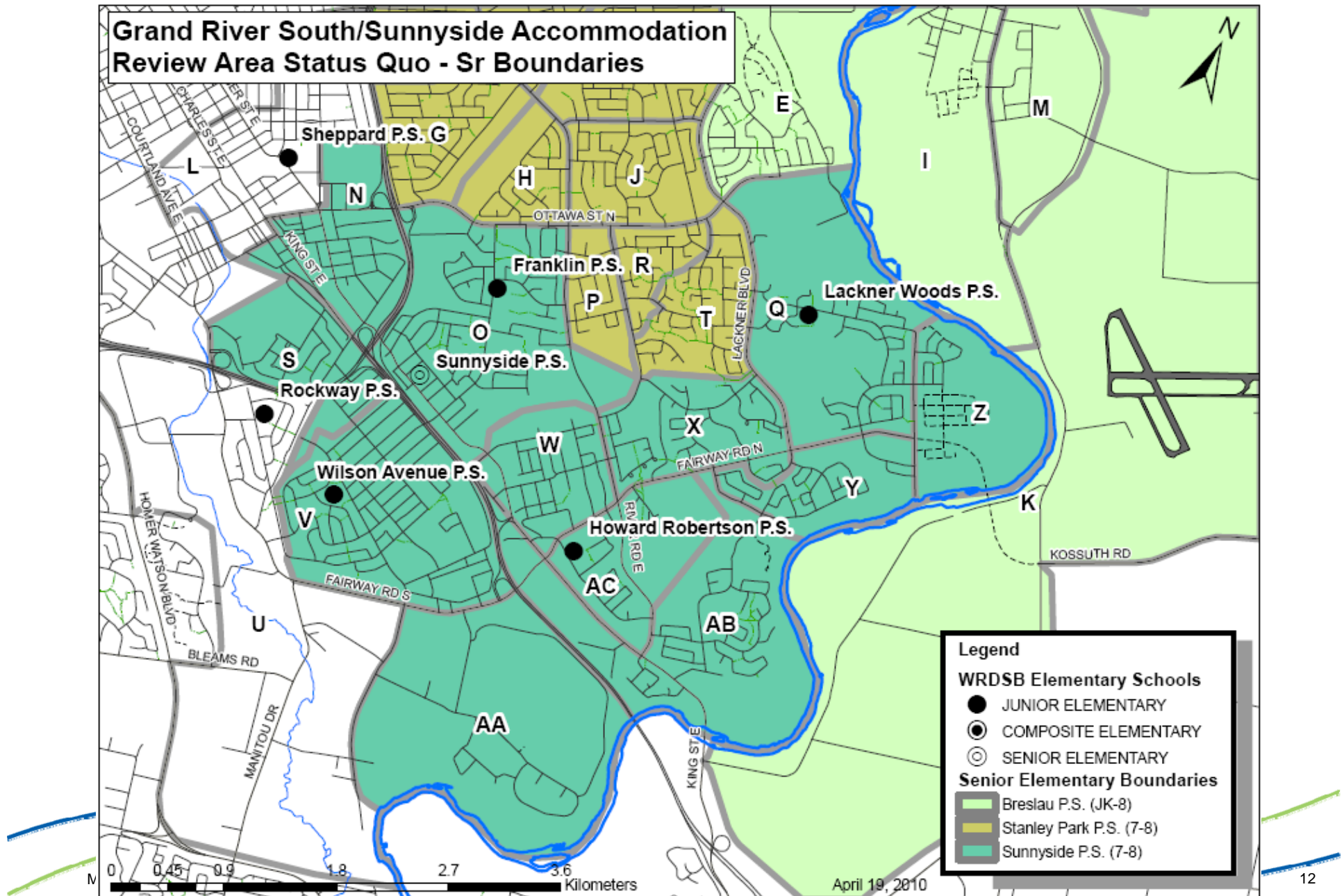


## Scenarios – Status Quo (revised)





## Scenarios – Status Quo (revised)





## Scenarios – Status Quo (revised)

### Description

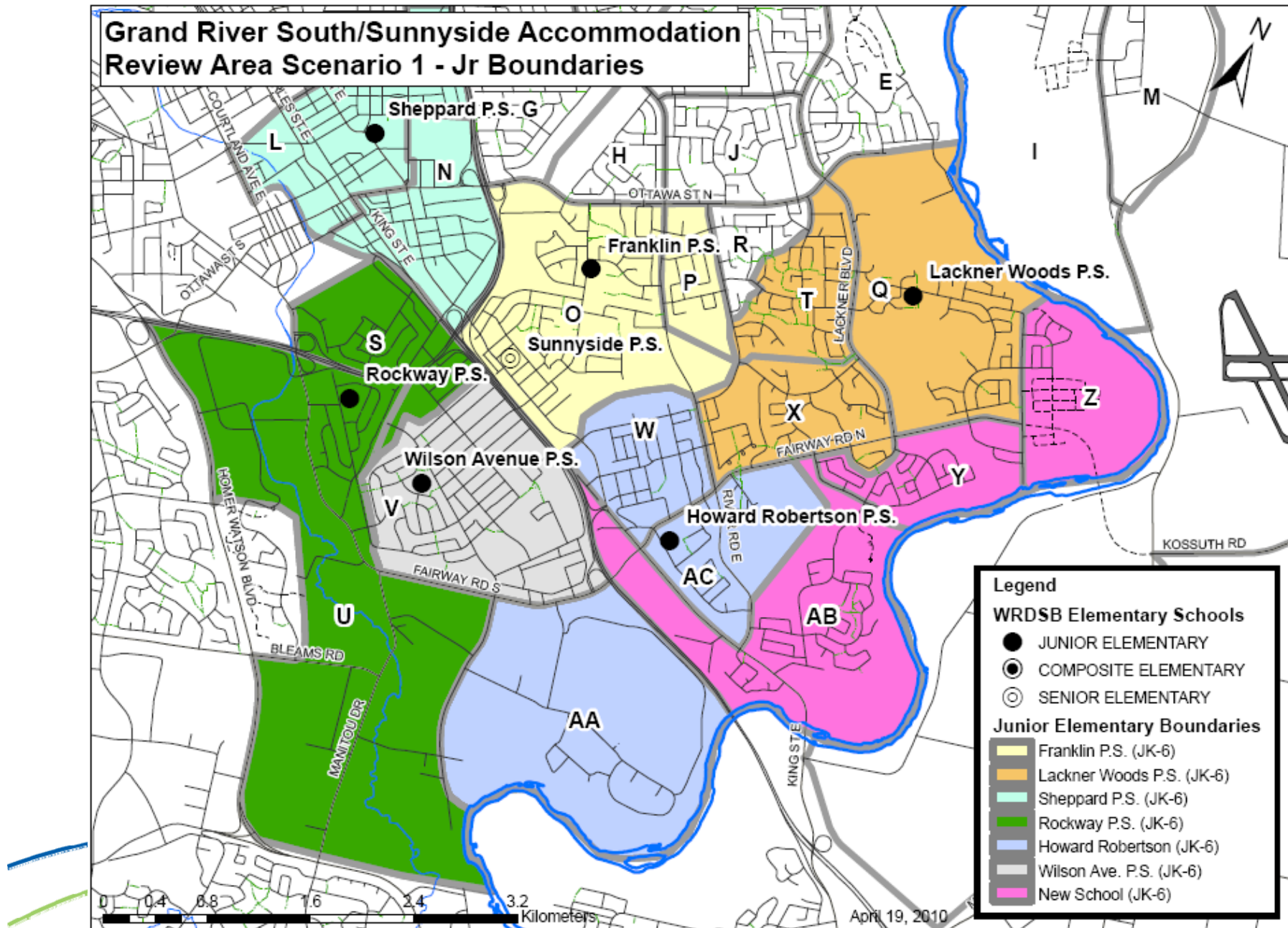
- New development in the area around Lackner Woods P.S. continues to put pressure on the facility as well as at Sheppard in the long term. Sunnyside P.S. also experiences some enrolment pressure as the congregated 7-8 school for the whole area
- Lackner Woods P.S. and Franklin P.S. continue to feed both Stanley Park P.S. and Sunnyside P.S. for the 7-8 program.

School	Built Capacity	2010				2015			2019		
		Total	FTE	%	SR	Total	%	SR	Total	%	SR
Breslau P.S.	325	460	417	128	93	669	206	133	744	229	177
Mackenzie King P.S.	199	200	173	87		194	97		184	92	
Smithson P.S.	299	211	188	63		205	69		198	66	
Crestview P.S.	507	408	357	70		437	86		471	93	
Stanley Park P.S.	441	408	408	93	408	321	73	321	344	78	344
Lackner Woods P.S.	368	588	503	137		691	188		624	170	
Franklin P.S.	582	594	594	102		559	96		536	92	
Sheppard P.S.	429	384	331	77		645	150		564	131	
Howard Robertson P.S.	526	382	382	73		403	77		423	80	
Sunnyside P.S.	423	500	500	118	500	516	122	516	602	142	602
Wilson Ave. P.S.	391	437	385	98		443	113		439	112	
Rockway P.S.	254	238	210	83		247	97		243	96	
<b>Total</b>	<b>4744</b>	<b>4810</b>	<b>4445</b>		<b>1001</b>	<b>5330</b>		<b>970</b>	<b>5372</b>		<b>1123</b>

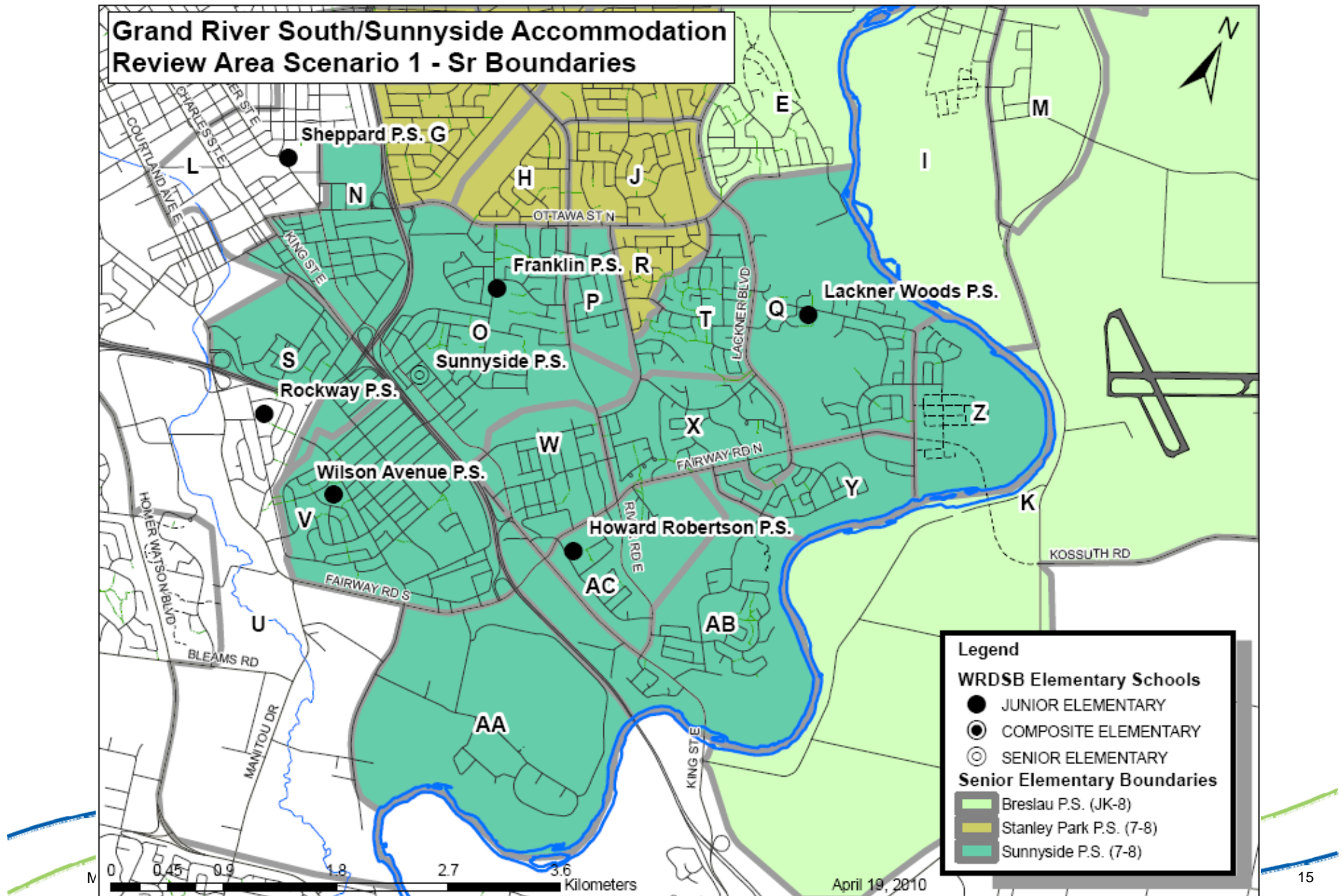
% refers to percentage capacity (Total bodies/capacity)

SR refers to total enrolment of the senior elementary program (7-8)

## Scenarios – Scenario 1 (revised)



## Scenarios – Scenario 1 (revised)





## Scenarios – Scenario 1 (revised)

### Description

- Additional JK-6 accommodation constructed in the southern portion of the review area on a site to be determined. Receives Areas Y and Z from Sheppard P.S., and Area AB from Franklin P.S.
- Sunnyside P.S. receives Areas P and T (for grades 7-8) from Stanley Park P.S., eliminating the split feeds from Lackner Woods P.S. and Franklin P.S.

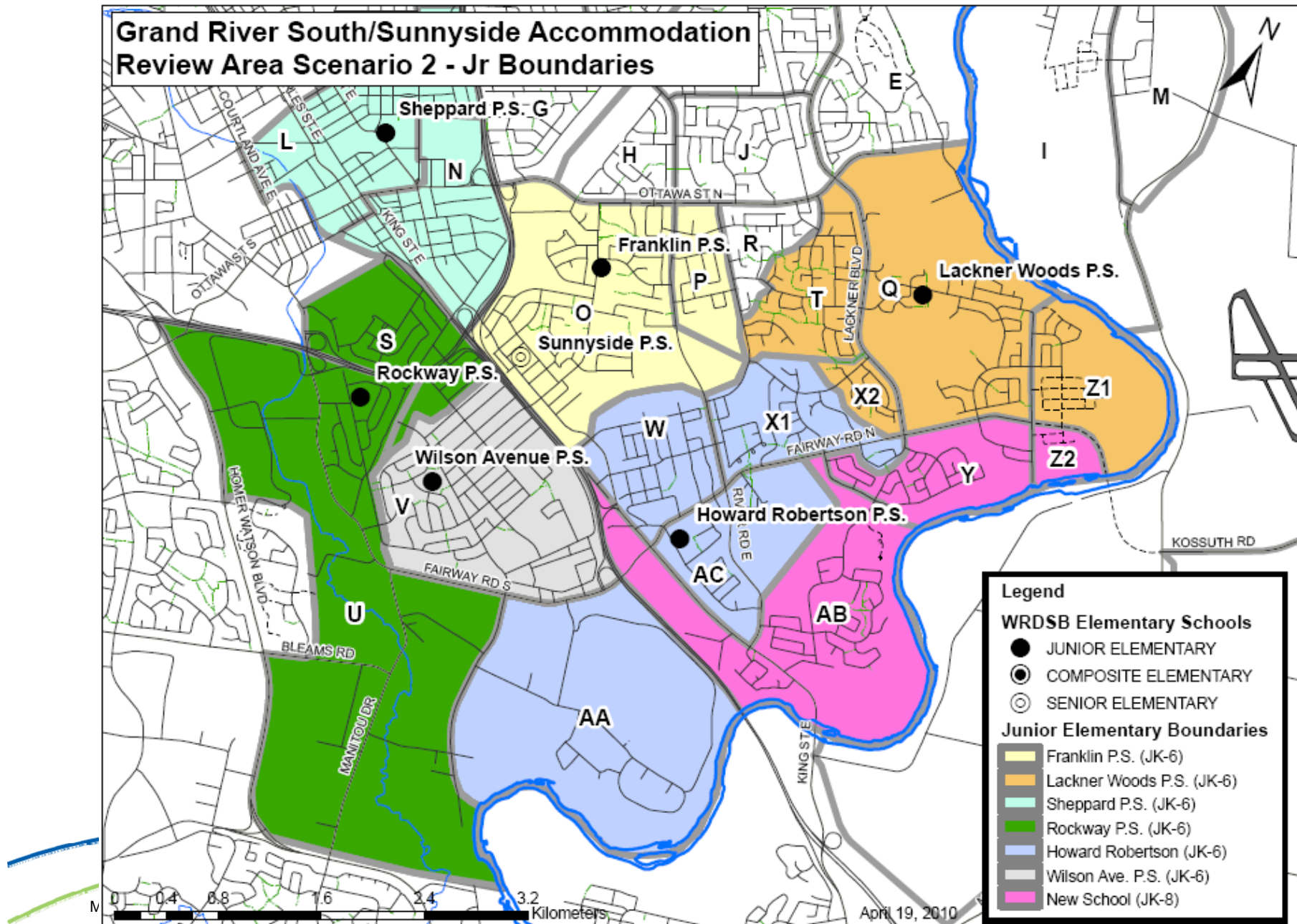
School	Built Capacity	2010				2015			2019		
		Total	FTE	%	SR	Total	%	SR	Total	%	SR
Breslau P.S.	325	460	417	142	93	669	206	133	744	229	177
Mackenzie King P.S.	199	200	173	101		194	97		184	92	
Smithson P.S.	299	174	151	58		170	57		163	55	
Crestview P.S.	507	408	357	80		437	86		471	93	
Stanley Park P.S.	429	398	398	92.8	398	323		323	348		348
Lackner Woods P.S.	368	524	449	142		635	173		590	160	
Franklin P.S.	581	454	410	78		440	76		428	74	
Sheppard P.S.	429	306	271	71		295	69		270	63	
Howard Robertson P.S.	526	382	339	73		403	77		423	80	
Sunnyside P.S.	423	554	554	131	554	566	134	566	653	154	653
Wilson Ave. P.S.	428	437	385	102		443	104		439	103	
Rockway P.S.	254	238	210	94		247	97		243	96	
New School		282	239			525			436		
<b>Total</b>	<b>4768</b>	<b>4817</b>	<b>4350</b>		<b>1045</b>	<b>5347</b>		<b>1022</b>	<b>5392</b>		<b>1178</b>

% refers to percentage capacity (Total bodies/capacity)

SR refers to total enrolment of the senior elementary program (7-8)



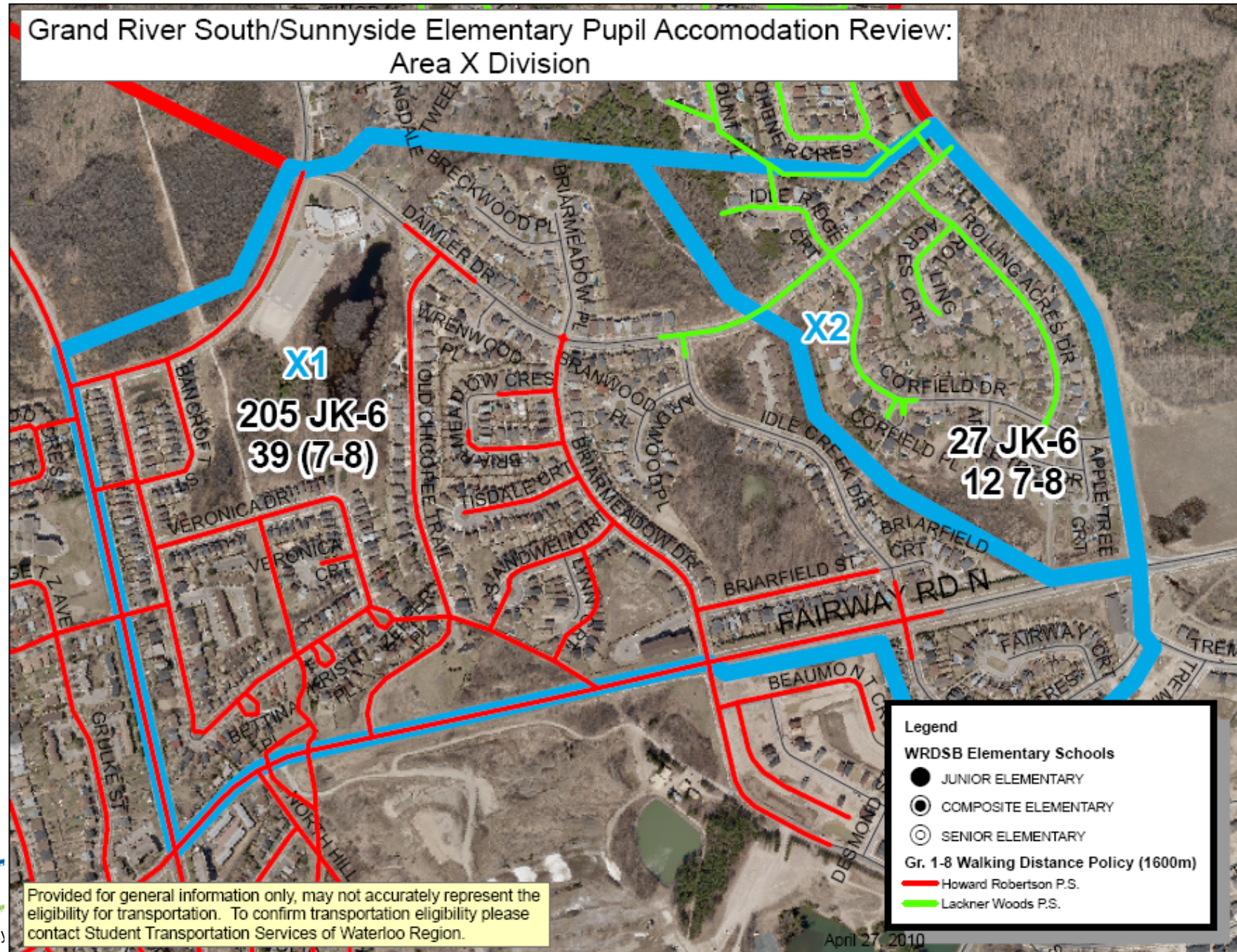
## Scenarios – Scenario 2





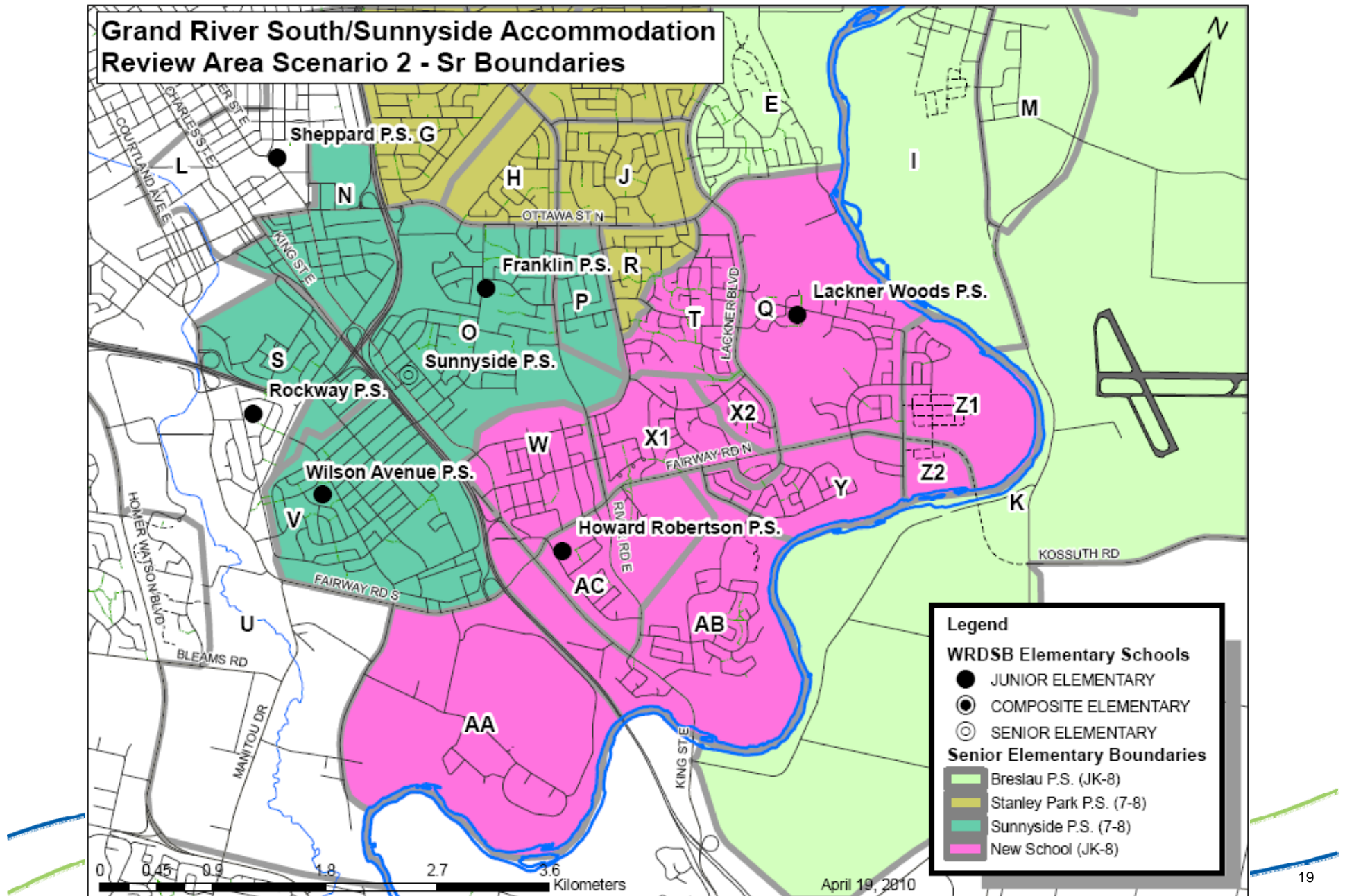
## Scenarios – Scenario 2

### Grand River South/Sunnyside Elementary Pupil Accomodation Review: Area X Division





## Scenarios – Scenario 2



## Scenarios – Scenario 2

### Description

- Additional JK-8 accommodation constructed in the southern portion of the review area on a site to be determined. Receives Area Y , a portion of area Z from Sheppard P.S., and Area AB from Franklin P.S.
- Lackner Woods P.S. receives portion of Area Z from Sheppard P.S.
- Howard Robertson P.S. receives portion of Area X from Lackner Woods P.S.
- New JK-8 provides the Sr. 7-8 program for its own catchment as well as Howard Robertson P.S. and Lackner Woods P.S. Eliminates the split feed from Lackner Woods P.S.
- Sunnyside P.S. continues to provide the Sr. 7-8 program from Wilson Ave., Franklin, and portion of Rockway and Sheppard public schools. Receives Area P from Stanley Park eliminating the split feed from Franklin P.S.

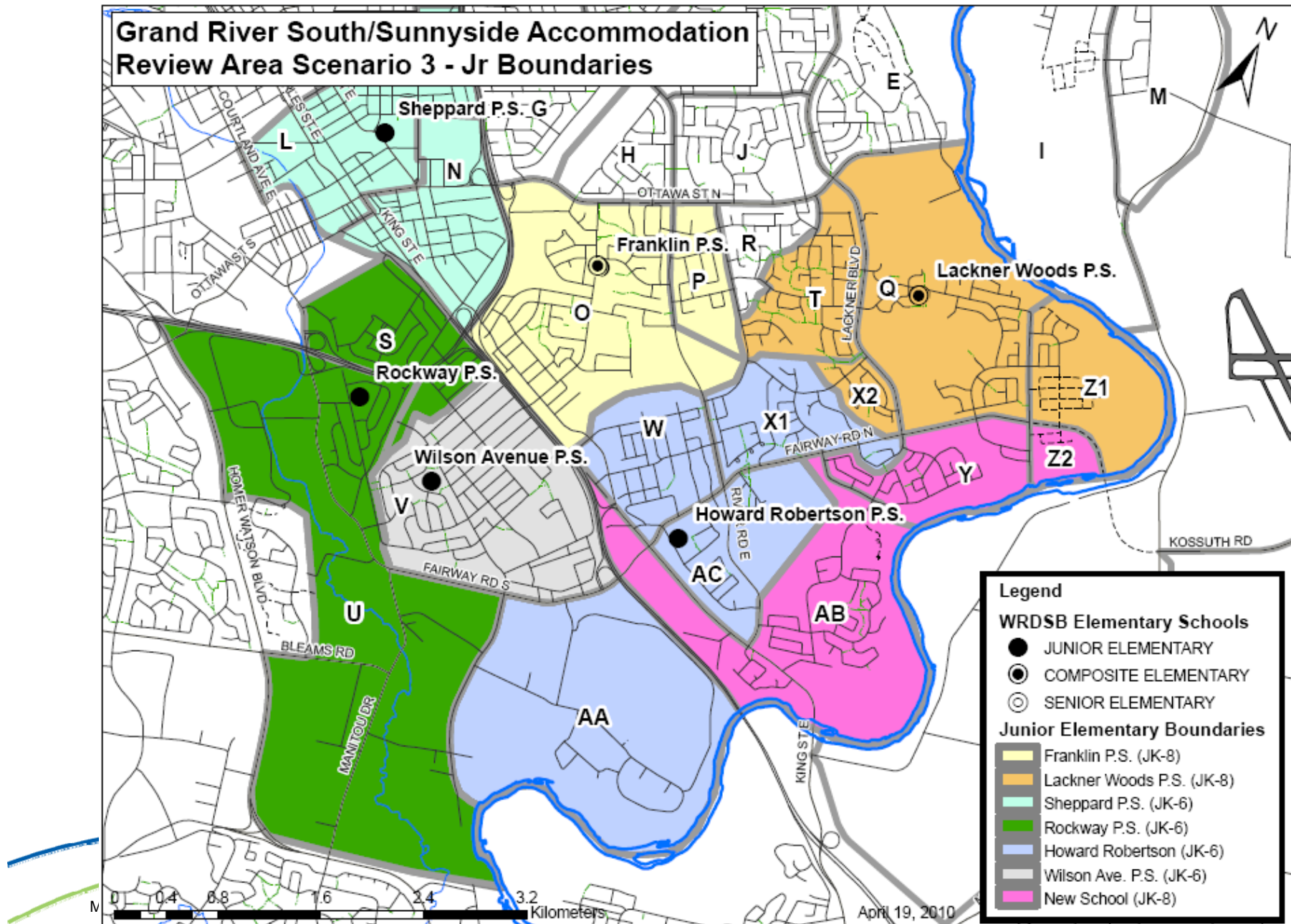
School	Built Capacity	2010				2015			2019		
		Total	FTE	%	SR	Total	%	SR	Total	%	SR
Breslau P.S.	325	460	417	142	93	669	206	133	744	229	177
Mackenzie King P.S.	199	200	173	101		194	97		184	92	
Smithson P.S.	299	174	151	58		170	57		163	55	
Crestview P.S.	507	408	357	80		437	86		471	93	
Stanley Park P.S.	526	398	398	75.7	398	323	61	323	348	66	348
Lackner Woods P.S.	368	368	309	100		628	171		545	148	
Franklin P.S.	581	454	410	78		440	76		428	74	
Sheppard P.S.	429	306	271	71		295	69		270	63	
Howard Robertson P.S.	526	563	497	107		582	111		604	115	
Sunnyside P.S.	423	227	227	54	227	219	52	219	214	51	214
Wilson Ave. P.S.	428	437	385	102		443	104		439	103	
Rockway P.S.	254	238	210	94		247	97		243	96	
New School		584	549		329	689		347	735		440
<b>Total</b>	<b>4865</b>	<b>4817</b>	<b>4350</b>		<b>1047</b>	<b>5336</b>		<b>1022</b>	<b>5388</b>		<b>1179</b>

% refers to percentage capacity (Total bodies/capacity)

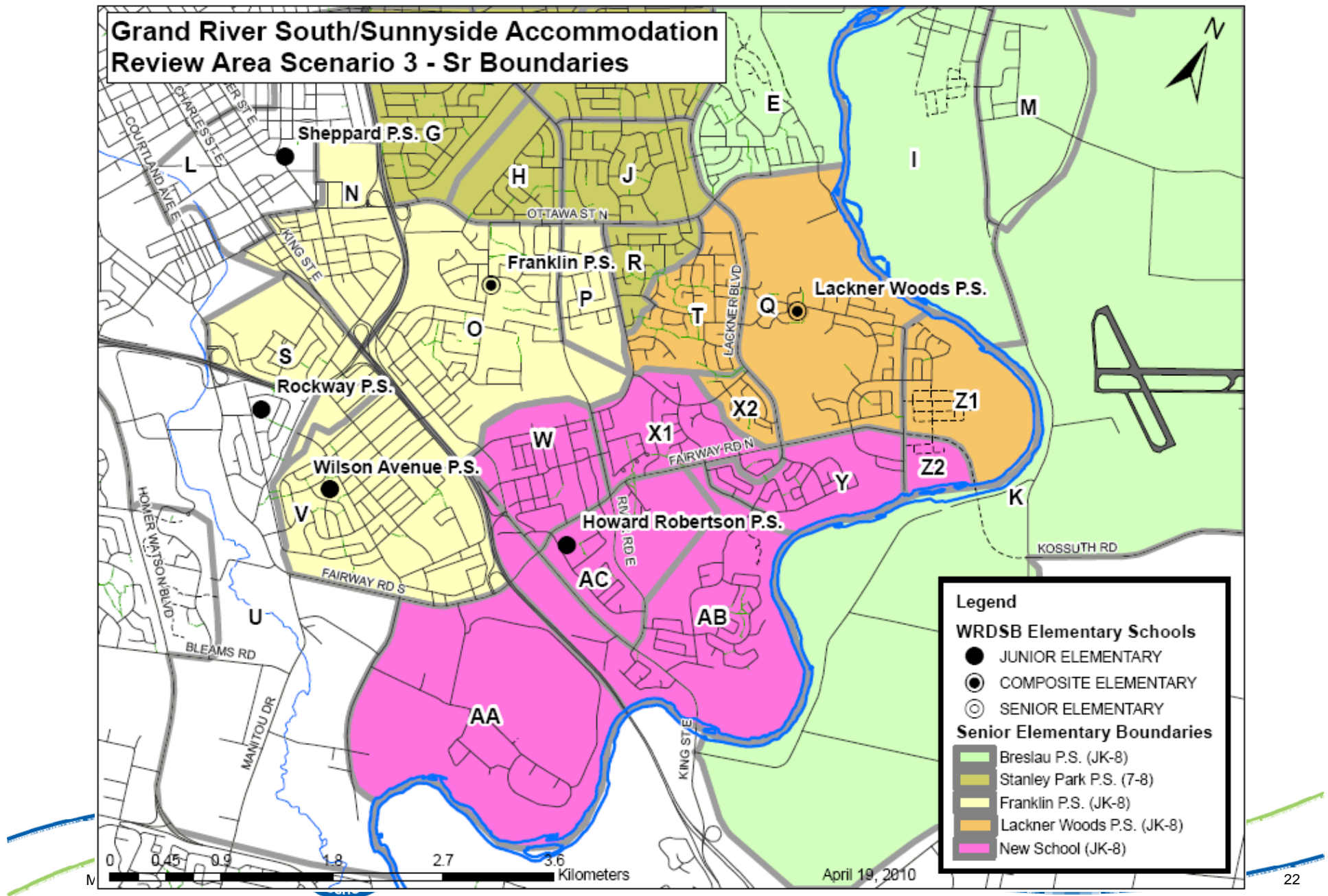
SR refers to total enrolment of the senior elementary program (7-8)



## Scenarios – Scenario 3



## Scenarios – Scenario 3



## Scenarios – Scenario 3

### Description

- Additional JK-8 accommodation constructed in the southern portion of the review area on a site to be determined. Receives Area Y , a portion of area Z from Sheppard P.S., and Area AB from Franklin P.S.
- Lackner Woods P.S. receives portion of Area Z from Sheppard P.S. and becomes JK-8.
- Howard Robertson P.S. receives portion of Area X from Lackner Woods P.S.
- New JK-8 facility provides the Sr. 7-8 program for its own catchment as well as Howard Robertson P.S.
- Sunnyside P.S. is closed.
- Franklin becomes JK-8 providing the Sr. 7-8 program for it's own catchment as well as Wilson Ave, and portions of Rockway and Sheppard public schools. Split feed eliminated.

School	Built Capacity	2010				2015			2019		
		Total	FTE	%	SR	Total	%	SR	Total	%	SR
Breslau P.S.	325	460	417	142	93	669	206	133	744	229	177
Mackenzie King P.S.	199	200	173	101		194	97		184	92	
Smithson P.S.	299	174	151	58		170	57		163	55	
Crestview P.S.	507	408	357	80		437	86		471	93	
Stanley Park P.S.	526	367	367	69.8	367	303	58	303	327	62	327
Lackner Woods P.S.	368	464	405	126	96	769	209	141	749	204	204
Franklin P.S.	581	709	665	122	255	678	117	238	660	114	232
Sheppard P.S.	429	306	271	71		295	69		270	63	
Howard Robertson P.S.	526	563	497	107		582	111		604	115	
Sunnyside P.S.	423	Closed									
Wilson Ave. P.S.	428	437	385	102		443	104		439	103	
Rockway P.S.	254	238	210	94		247	97		243	96	
New School		491	456		236	549		207	532		237
<b>Total</b>	<b>4865</b>	<b>4817</b>	<b>4350</b>		<b>1047</b>	<b>5336</b>		<b>1022</b>	<b>5386</b>		<b>1177</b>

% refers to percentage capacity (Total bodies/capacity)

SR refers to total enrolment of the senior elementary program (7-8)

## Future Meeting Dates

- Grand River South/Sunnyside Accommodation Review
  - ARC #7: Tuesday May 18, 2010, Sunnyside P.S. 4:30-6:00pm
  - Public Meeting # 2, Wednesday, May 26, 2010 7:00pm – 9:00 pm
  - Arc # 8 Tuesday June 8, 2010, , Sunnyside P.S. 4:30-6:00pm





## Contact Information

- Website: [www.wrdsb.ca](http://www.wrdsb.ca)
  - » About>Planning>Accommodation Reviews
  - » Grand River South/Sunnyside Accommodation Review
- E-mail: [boundaryfeedback@wrdsb.on.ca](mailto:boundaryfeedback@wrdsb.on.ca)
- Phone: 519-570-0003 ext. 4419

