

West Galt

Elementary Schools Pupil Accommodation Review

Accommodation Review Committee (ARC)

Meeting #11

May 2, 2012

St. Andrew's P.S. Library

5:30 – 7:30 pm



Waterloo Region
District School Board

Agenda

1. Welcome
2. ARC Meeting #10 – Draft Minutes Approval
3. Beechwood Rd site - update
4. Scenarios
 - Scenario 14 – Yea or Nay?
 - Scenario 22 – Yea or Nay?
 - Others? – Yea or Nay?
5. Draft Report and Recommendations
6. Revised Timelines
 - Public Meeting #4
 - Report to the Board of Trustees
7. Future Meeting Dates
 - Working Group Meeting #12: to be determined
 - Public Meeting #4: to be determined
8. Roundtable/Wrap-up



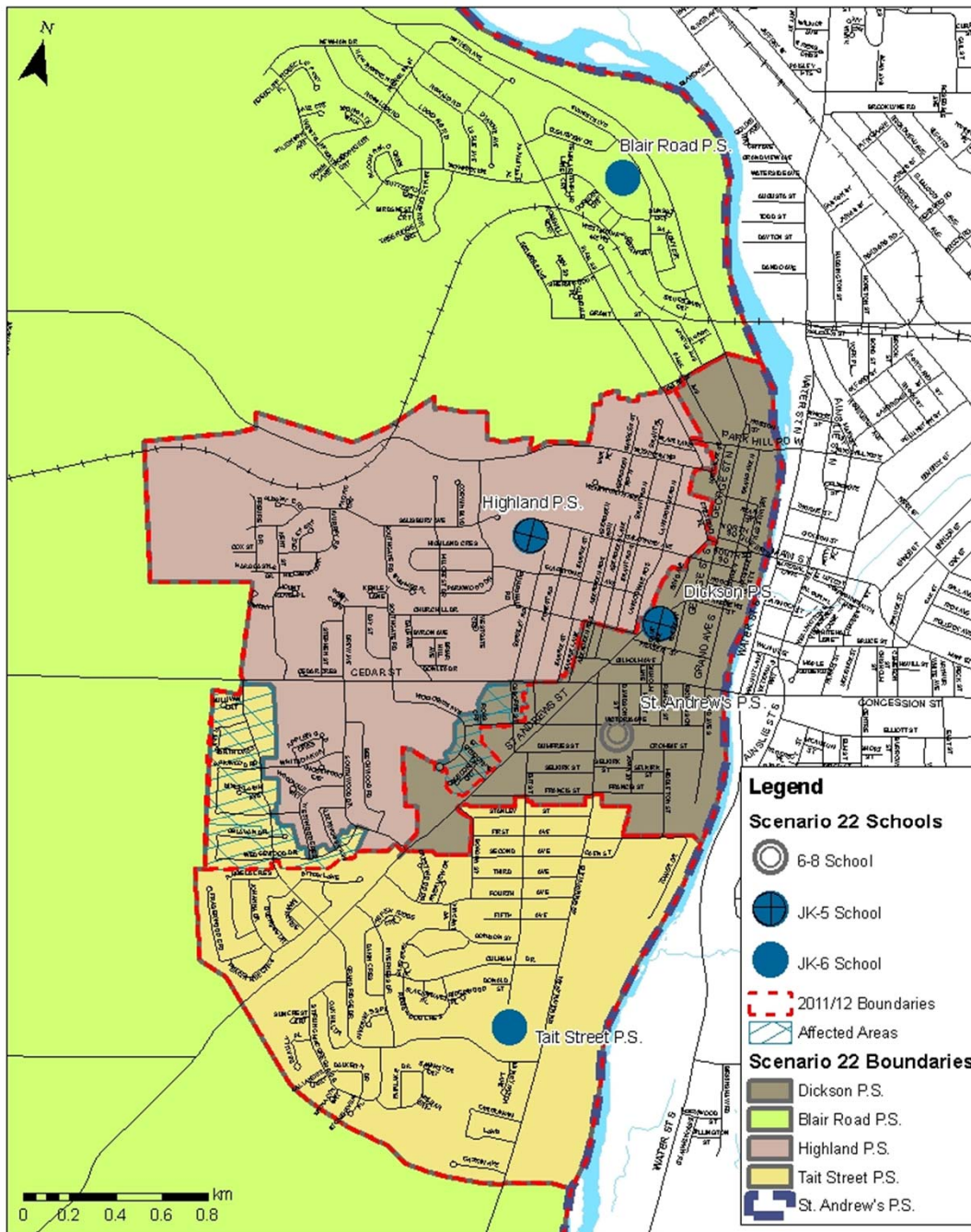
Beechwood Road Site - Update

Identified Issues:

- Southwood SS practice field - loss of use by the school
- Cooperation between Region (child care), City (Willard Park) and Board will be required
- Site size/# students creating wear and tear on field (intensity of field use)
- Creative design required
 - Traffic/circulation on site
 - Building orientation/location
 - Parking

Other

- Zoning/Official Plan allows for a school to be built on the site (N1R5 zoning)
- Actual site size 4.7 acres



Scenario 22 (new)

Scenario 22 Enrolment Projections

School				2013			2014			2015			2016		
	On-the-Ground Capacity	# Classrooms	Grades	Enrolment	% capacity	# classes	Enrolment	% capacity	# classes	Enrolment	% capacity	# classes	Enrolment	% capacity	# classes
Blair Road PS	294	11	JK-6	267	91%	12	286	97%	13	311	106%	14	339	115%	14
Dickson PS	161	7	JK-5	141	88%	7	142	88%	7	140	87%	7	142	88%	7
Highland PS	464	19	JK-5	476	103%	22	461	99%	22	456	98%	22	441	95%	22
St. Andrew's PS	424	16	6-8	406	96%	17	387	91%	16	389	92%	16	398	94%	16
Tait Street PS	348	14	JK-6	314	90%	16	308	89%	15	295	85%	14	298	86%	14
TOTAL	1691	67		1604	95%	74	1584	94%	73	1591	94%	73	1618	96%	73

Notes:

- Enrolment projections do not include any potential phasing
- # classes is a rough estimate based on enrolment projections by grade and class size caps
- % capacity = enrolment projection/on-the-ground capacity. This is the Ministry-rated capacity of the school

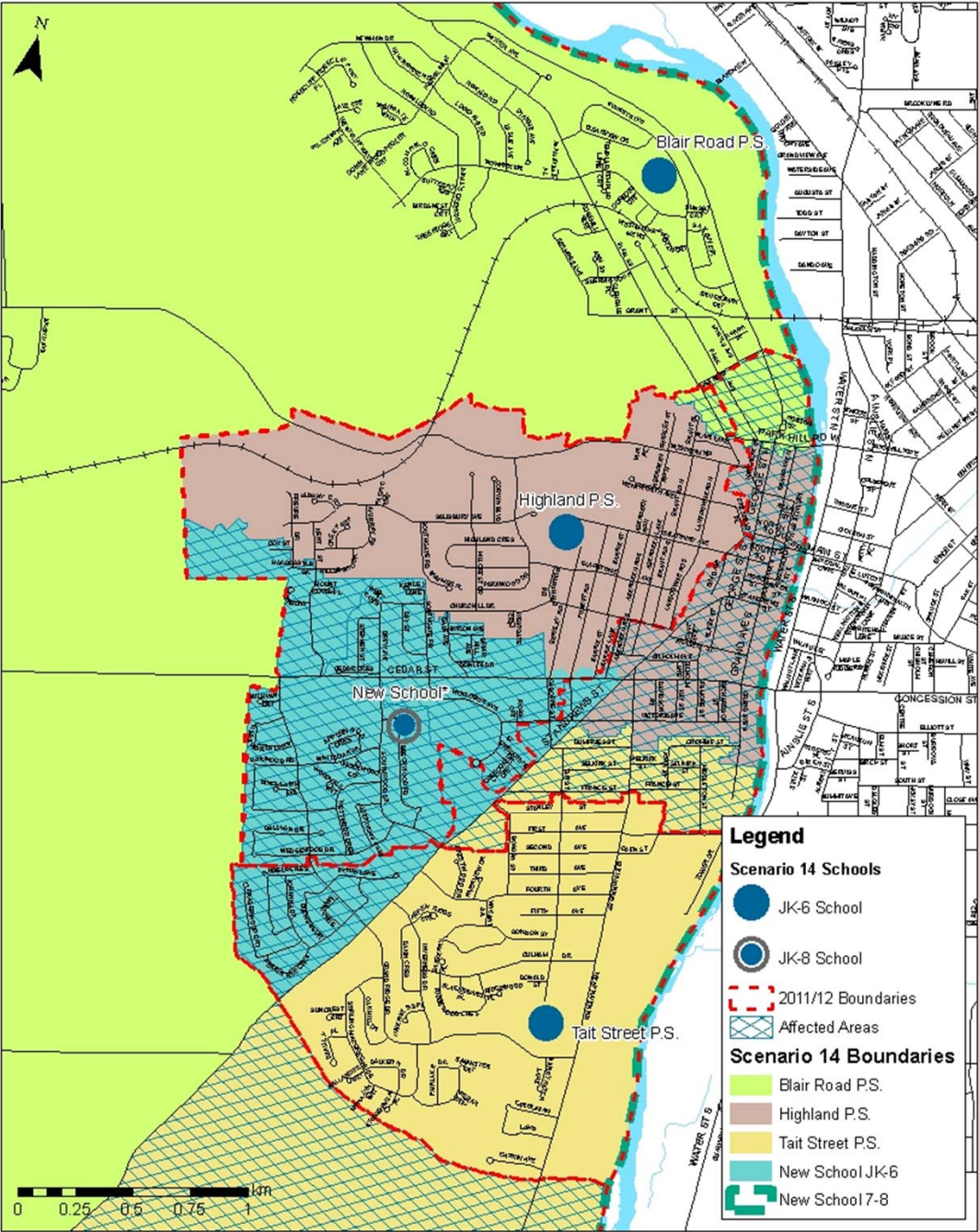


Waterloo Region
District School Board

Scenario 22 vs. Objectives

Objective	Meets	Doesn't Meet
To reorganize the JK-5, 6-8 school organizations in favour of JK-6, JK-8 or 7-8		X
To reduce the number of students currently attending Highland P.S. to better match the enrolment to the schools' built capacity	X	
To reduce the potential for combined grades at schools by moving towards the following criteria (from Board Policy 3002): <ul style="list-style-type: none"> • JK-6 facilities between 350 and 400 students (approx. 2 classes/grade) • JK-8 facilities between 500 and 650 students (approx. 2 classes/grade JK-6, 2+ classes/grade 7-8) 		X
To increase the number of students within walking distance to their assigned school		X
To reduce the reliance on portable classrooms for long-term student accommodation		X
To reduce unused (surplus) capacity by organizing schools and boundaries to achieve utilization rates (enrolment/capacity) that exceed 80% over the long-term (approx. 10 years)	X	
To maintain those school buildings that can provide appropriate, purpose-built facilities (kindergarten rooms, gyms, libraries, etc.)		X
To reduce the cost to achieve legislated accessibility requirements by 2025		X





Scenario 14



Scenario 14 Enrolment Projections

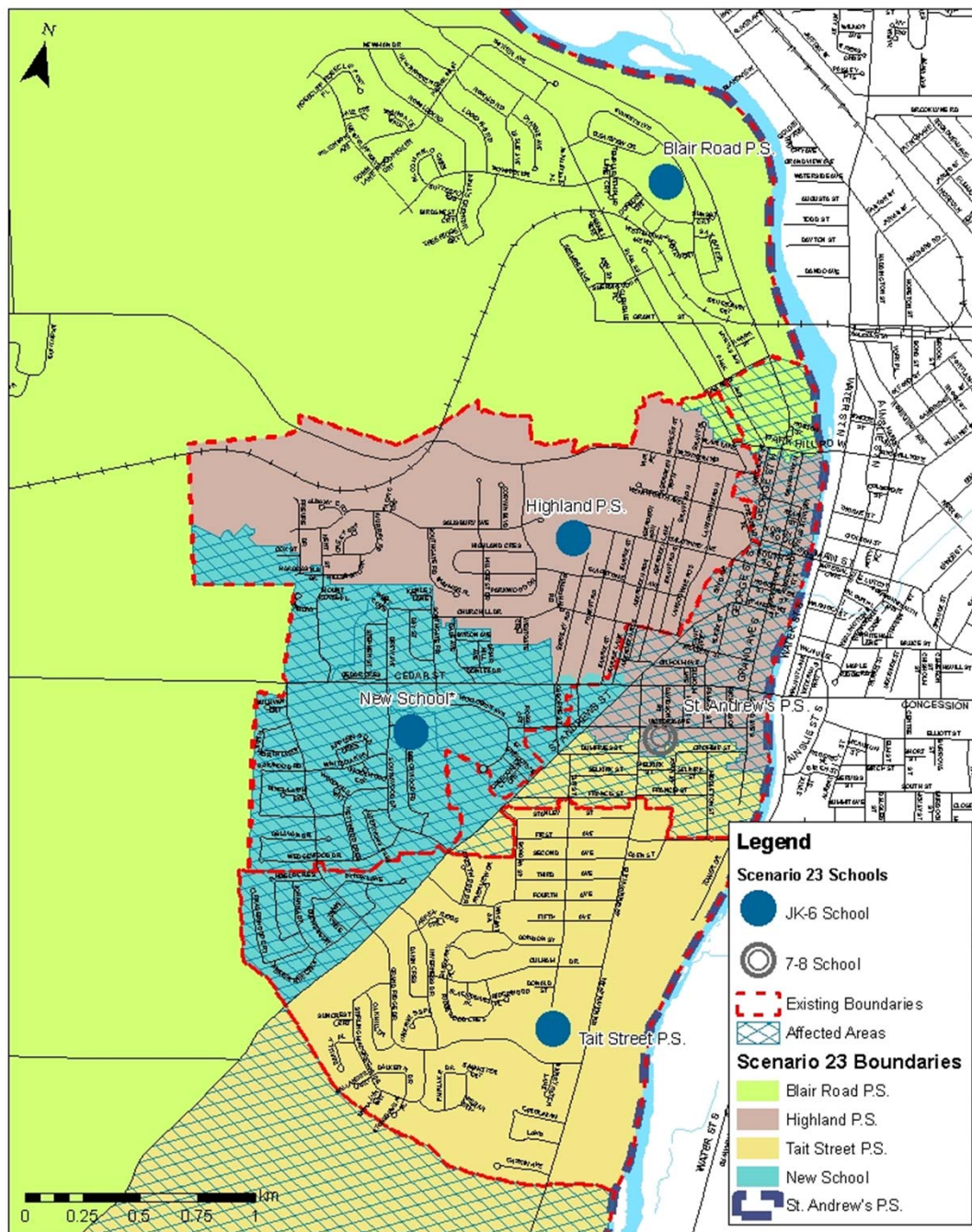
			2017		2018		2019		2020		2021	
School	OTG Capacity	Grades	Enrolment	% capacity	Enrolment	% capacity	Enrolment	% capacity	Enrolment	% capacity	Enrolment	% capacity
Blair Road PS	294	JK-6	243	83%	242	82%	241	82%	239	81%	238	81%
Dickson PS	CLOSED											
Highland PS	464	JK-6	449	97%	431	93%	420	91%	420	91%	421	91%
St. Andrew's PS	CLOSED											
Tait Street PS	348	JK-6	293	84%	290	83%	298	86%	307	88%	320	92%
Beechwood Rd	650	JK-8	636	98%	670	103%	671	103%	653	100%	629	97%
TOTAL	1756		1621	92%	1633	93%	1630	92%	1619	92%	1608	92%

Scenario 14 vs. Objectives

Objective	Meets	Doesn't Meet
To reorganize the JK-5, 6-8 school organizations in favour of JK-6, JK-8 or 7-8	X	
To reduce the number of students currently attending Highland P.S. to better match the enrolment to the schools' built capacity	X	
To reduce the potential for combined grades at schools by moving towards the following criteria (from Board Policy 3002): <ul style="list-style-type: none"> • JK-6 facilities between 350 and 400 students (approx. 2 classes/grade) • JK-8 facilities between 500 and 650 students (approx. 2 classes/grade JK-6, 2+ classes/grade 7-8) 		X
To increase the number of students within walking distance to their assigned school	X	
To reduce the reliance on portable classrooms for long-term student accommodation	X	
To reduce unused (surplus) capacity by organizing schools and boundaries to achieve utilization rates (enrolment/capacity) that exceed 80% over the long-term (approx. 10 years)	X	
To maintain those school buildings that can provide appropriate, purpose-built facilities (kindergarten rooms, gyms, libraries, etc.)	X	
To reduce the cost to achieve legislated accessibility requirements by 2025	X	



West Galt Scenario 23



Scenario 23 (new)

Scenario 23 Enrolment Projections

School	OTG Capacity	Grades	2017		2018		2019		2020		2021	
			Enrolment	% capacity	Enrolment	% capacity	Enrolment	% capacity	Enrolment	% capacity	Enrolment	% capacity
Blair Road PS	294	JK-6	243	83%	242	82%	241	82%	239	81%	238	81%
Dickson PS	CLOSED											
Highland PS	464	JK-6	449	97%	431	93%	420	91%	420	91%	421	91%
St. Andrew's PS	424	7-8	318	75%	343	81%	351	83%	335	79%	318	75%
Tait Street PS	348	JK-6	293	84%	290	83%	298	86%	307	88%	320	92%
Beechwood Rd	340	JK-6	318	94%	327	96%	320	94%	318	94%	311	91%
TOTAL	1870		1621	87%	1633	87%	1630	87%	1619	87%	1608	86%

Notes:

- Enrolment projections do not include any potential phasing
- % capacity = enrolment projection/on-the-ground capacity. This is the Ministry-rated capacity of the school



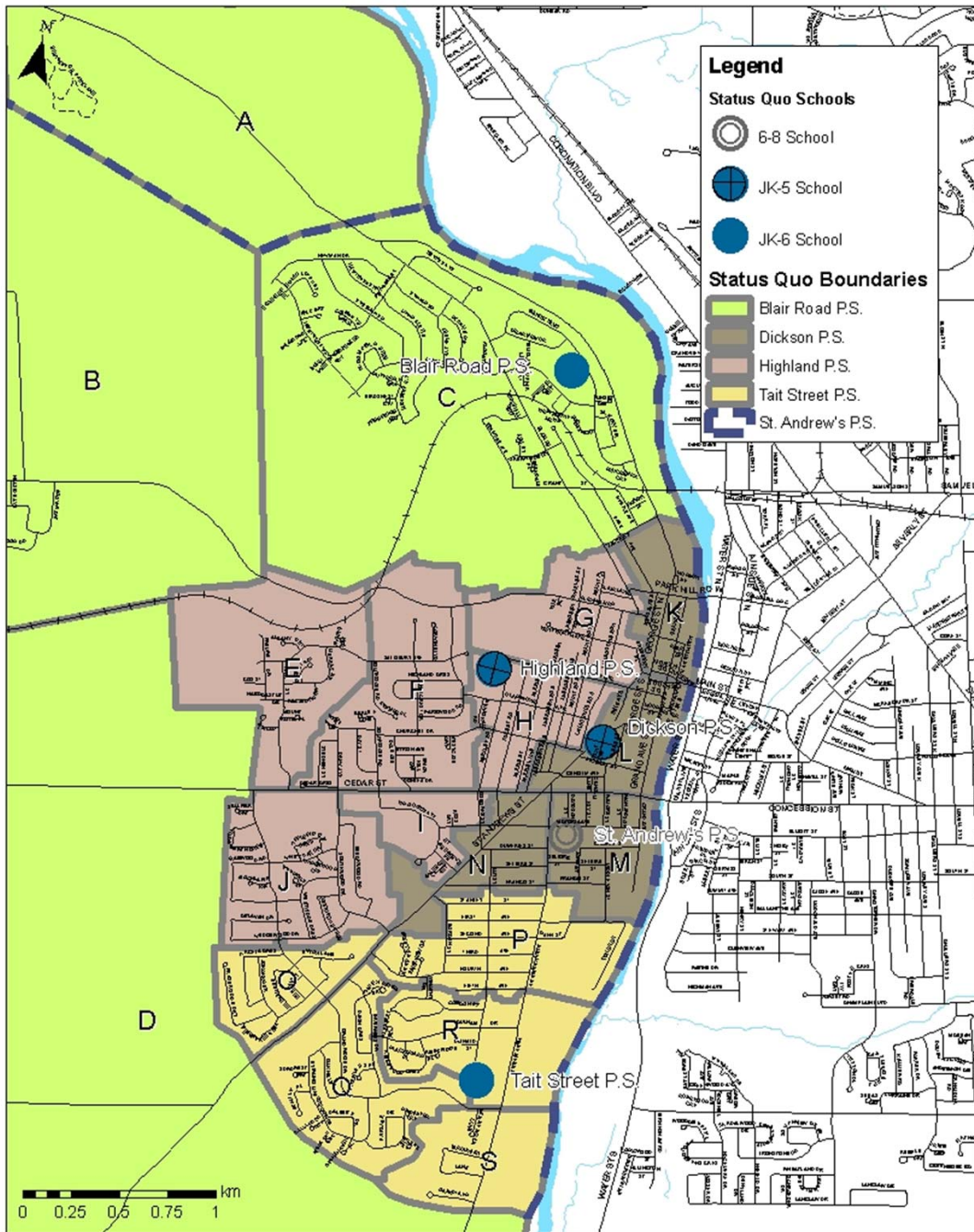
Waterloo Region
District School Board

Scenario 23 vs. Objectives

Objective	Meets	Doesn't Meet
To reorganize the JK-5, 6-8 school organizations in favour of JK-6, JK-8 or 7-8	X	
To reduce the number of students currently attending Highland P.S. to better match the enrolment to the schools' built capacity	X	
To reduce the potential for combined grades at schools by moving towards the following criteria (from Board Policy 3002): <ul style="list-style-type: none"> • JK-6 facilities between 350 and 400 students (approx. 2 classes/grade) • JK-8 facilities between 500 and 650 students (approx. 2 classes/grade JK-6, 2+ classes/grade 7-8) 		X
To increase the number of students within walking distance to their assigned school	X	
To reduce the reliance on portable classrooms for long-term student accommodation	X	
To reduce unused (surplus) capacity by organizing schools and boundaries to achieve utilization rates (enrolment/capacity) that exceed 80% over the long-term (approx. 10 years)	X	
To maintain those school buildings that can provide appropriate, purpose-built facilities (kindergarten rooms, gyms, libraries, etc.)	X	
To reduce the cost to achieve legislated accessibility requirements by 2025	X	



West Galt Status Quo



Status Quo

Status Quo Enrolment Projections

School				2013			2014			2015			2016		
	On-the-Ground Capacity	# Classrooms	Grades	Enrolment	% capacity	# classes	Enrolment	% capacity	# classes	Enrolment	% capacity	# classes	Enrolment	% capacity	# classes
Blair Road PS	294	11	JK-6	246	84%	12	251	85%	12	266	90%	13	273	93%	13
Dickson PS	161	7	JK-5	109	68%	5	108	67%	5	105	65%	5	103	64%	5
Highland PS	464	19	JK-5	557	120%	27	554	119%	27	552	119%	26	559	120%	27
St. Andrew's PS	424	16	6-8	411	97%	16	394	93%	16	403	95%	16	407	96%	16
Tait Street PS	348	14	JK-6	281	81%	13	277	80%	13	265	76%	13	276	79%	13
TOTAL	1691	67		1604	95%	73	1584	94%	72	1591	94%	72	1618	96%	73

Notes:

- Enrolment projections do not include any potential phasing
- # classes is a rough estimate based on enrolment projections by grade and class size caps
- % capacity = enrolment projection/on-the-ground capacity. This is the Ministry-rated capacity of the school



Waterloo Region
District School Board

Status Quo vs. Objectives

Objective	Meets	Doesn't Meet
To reorganize the JK-5, 6-8 school organizations in favour of JK-6, JK-8 or 7-8		X
To reduce the number of students currently attending Highland P.S. to better match the enrolment to the schools' built capacity		X
To reduce the potential for combined grades at schools by moving towards the following criteria (from Board Policy 3002): <ul style="list-style-type: none"> • JK-6 facilities between 350 and 400 students (approx. 2 classes/grade) • JK-8 facilities between 500 and 650 students (approx. 2 classes/grade JK-6, 2+ classes/grade 7-8) 		X
To increase the number of students within walking distance to their assigned school		X
To reduce the reliance on portable classrooms for long-term student accommodation		X
To reduce unused (surplus) capacity by organizing schools and boundaries to achieve utilization rates (enrolment/capacity) that exceed 80% over the long-term (approx. 10 years)		X
To maintain those school buildings that can provide appropriate, purpose-built facilities (kindergarten rooms, gyms, libraries, etc.)		X
To reduce the cost to achieve legislated accessibility requirements by 2025		X

Future Meeting Dates

- **ARC Meetings**
 - ARC #12: TBD
- **Public Meetings**
 - Public Meeting # 4: TBD
- **Report to Board of Trustees**



Contact Information

- Website: www.wrdsb.ca
 - » About Us > Planning Department > Accommodation Reviews > West Galt Elementary Schools
 - » Search “West Galt Review”
- E-mail: boundaryfeedback@wrdsb.on.ca
- Phone: 519-570-0003 ext. 4419

