

# Woolwich/Wellesley Townships

## Elementary Schools Pupil Accommodation Review **Accommodation Review Committee Meeting #8**

February 2, 2012

Floradale P.S. Library 6:30 – 8:00 pm



Waterloo Region  
District School Board

# Agenda

- 1. Welcome**
- 2. ARC Meeting # 7 – Draft Minutes**
- 3. Draft Issues/Objectives**
- 4. Preliminary Scenario Discussion**
- 5. Future Meeting Dates/Times**



### 3. Draft Objectives

1. **Ensure equitable student access to a community school by having defined attendance area boundaries that relate geographically to the community it is located in.**
2. **Where possible organize school attendance boundaries to minimize distance to school (time on bus).**
3. **Address student transitions where changes proposed.**
4. **Have regard for Board policy 3002; Elementary School Size and Configuration, recognizing the challenges of rural areas.**

### 3. Draft Objectives

5. **Support the efficient use of capital and operating resources through the consideration of facility condition, accessibility, and equitable access to educational amenities.**
6. **Maximize the number of students accommodated in permanent capacity**
7. **Maximize the use of existing capacity within facilities**
8. **Recognize the unique needs of communities served by different schools through the reasonable accommodation of cultural differences.**

# 4. Preliminary Scenario Discussion

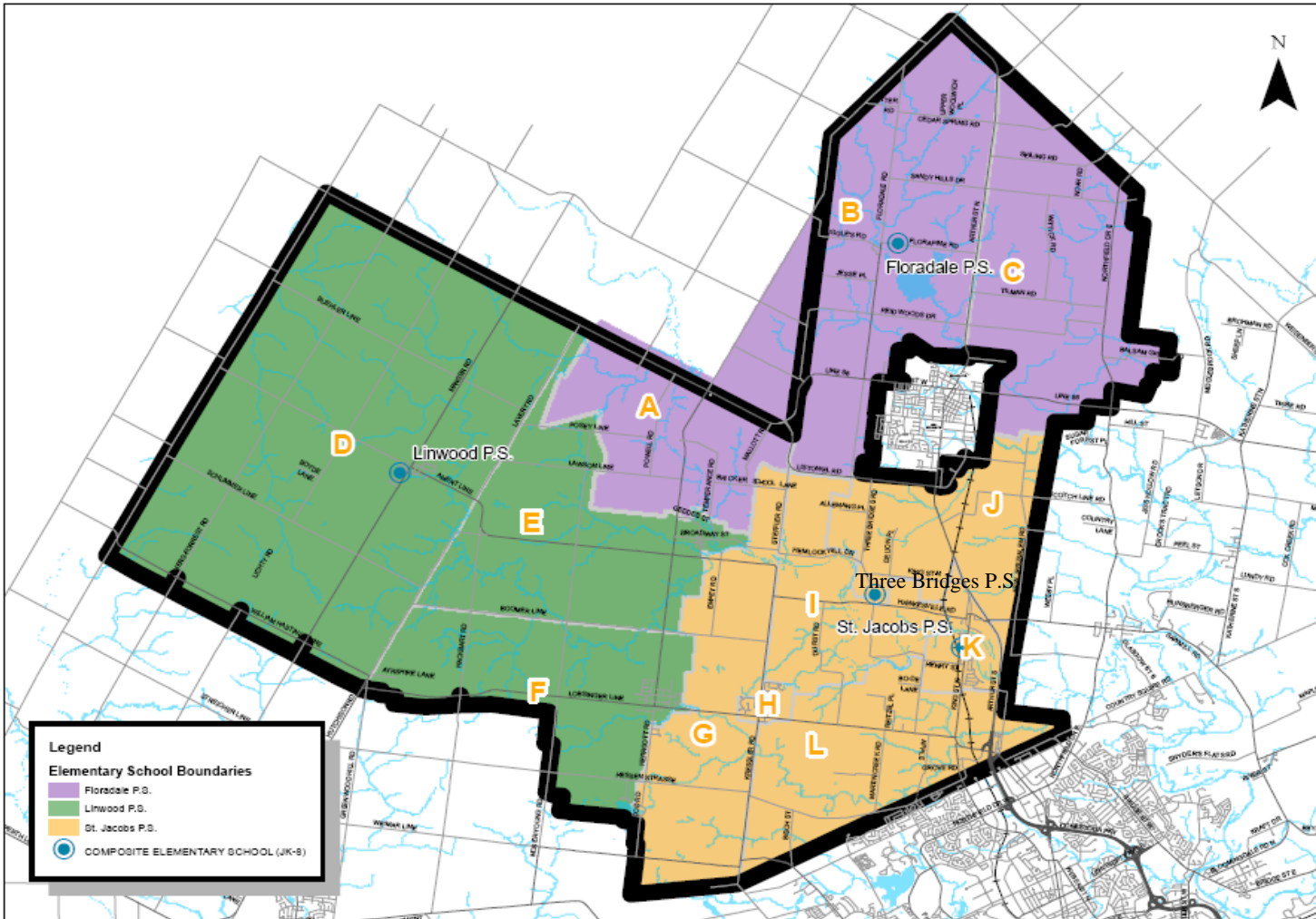
Woolwich/Wellesley Townships Total Enrolment Projections By Area Summary

AREA	2011			2012			2013			2014			2015			2016			2017			2018			2019			2020		
	JK-6 Total	7-8 Total	Total JK-8	JK-6 Total	7-8 Total	Total JK-8	JK-6 Total	7-8 Total	Total JK-8	JK-6 Total	7-8 Total	Total JK-8	JK-6 Total	7-8 Total	Total JK-8	JK-6 Total	7-8 Total	Total JK-8	JK-6 Total	7-8 Total	Total JK-8	JK-6 Total	7-8 Total	Total JK-8	JK-6 Total	7-8 Total	Total JK-8			
A	46	13	59	47	13	60	47	14	61	43	14	57	43	14	57	43	16	59	47	14	61	47	13	60	48	15	63	45	15	60
B	44	13	57	44	9	53	39	14	53	40	14	54	38	13	51	39	13	52	38	12	50	43	10	53	46	6	52	50	7	57
C	22	4	26	22	5	27	21	7	28	24	5	29	23	6	29	23	8	31	22	7	29	23	6	29	23	5	28	23	6	29
D	169	50	219	168	47	215	173	42	215	177	40	217	184	41	225	187	40	227	193	39	232	193	42	235	193	48	241	194	47	241
E	80	31	111	81	28	109	83	21	104	84	21	105	81	26	107	84	25	109	89	19	108	93	18	111	92	21	113	90	25	115
F	119	26	145	117	23	140	112	29	141	106	32	138	105	28	133	103	28	131	105	28	133	102	28	130	103	30	133	109	25	134
G(S)	8	1	9	9	0	9	8	1	9	7	2	9	7	1	8	6	1	7	6	3	9	5	4	9	4	3	7	6	1	7
G(T)	14	5	19	15	5	20	14	6	20	14	6	20	16	4	20	17	4	21	18	4	22	16	5	21	15	6	21	17	5	22
H(S)	64	21	85	59	23	82	59	19	78	59	14	73	55	19	74	57	18	75	53	19	72	55	19	74	58	13	71	60	15	75
H(T)	2	0	2	3	0	3	2	1	3	2	1	3	3	0	3	2	1	3	2	1	3	2	1	3	2	1	3	2	0	2
I(S)	5	2	7	6	2	8	4	3	7	3	3	6	5	2	7	5	2	7	1	4	5	1	4	5	1	3	4	1	2	3
I(T)	12	7	19	13	8	21	16	5	21	15	6	21	16	8	24	17	6	23	17	5	22	17	7	24	15	10	25	14	8	22
J(S)	8	0	8	9	0	9	8	2	10	8	2	10	6	1	7	5	2	7	4	3	7	4	3	7	4	1	5	3	1	4
J(T)	14	6	20	14	8	22	17	3	20	17	3	20	17	4	21	16	6	22	15	7	22	18	5	23	16	6	22	16	6	22
K(S)	151	26	177	151	32	183	143	46	189	143	46	189	138	42	180	136	43	179	145	29	174	143	30	173	144	40	184	145	38	183
K(T)	2	1	3	2	1	3	3	0	3	3	0	3	2	1	3	2	2	4	2	1	3	2	0	2	2	1	3	2	1	3
L(S)	24	8	32	24	4	28	23	5	28	21	7	28	22	5	27	22	3	25	22	6	28	22	8	30	26	4	30	25	4	29
L(T)	5	2	7	4	3	7	4	2	6	4	2	6	2	3	5	3	2	5	3	0	3	4	0	4	3	1	4	2	2	4
FLO OOB	84	28	112	80	31	111	77	31	108	79	25	104	78	23	101	73	30	103	81	22	103	88	13	101	91	20	111	94	24	118
LIN OOB	11	3	14	12	3	15	9	5	14	10	4	14	10	1	11	11	1	12	10	2	12	9	4	13	8	4	12	7	4	11
STJ OOB	8	1	9	9	1	10	7	3	10	7	4	11	7	2	9	8	2	10	10	1	11	10	1	11	10	2	12	9	2	11
TBR OOB	6	4	10	7	4	11	10	1	11	12	1	13	12	2	14	12	1	13	11	3	14	11	5	16	11	5	16	9	6	15



# 4. Preliminary Scenario Discussion

## Woolwich and Wellesley Townships Review: Status Quo



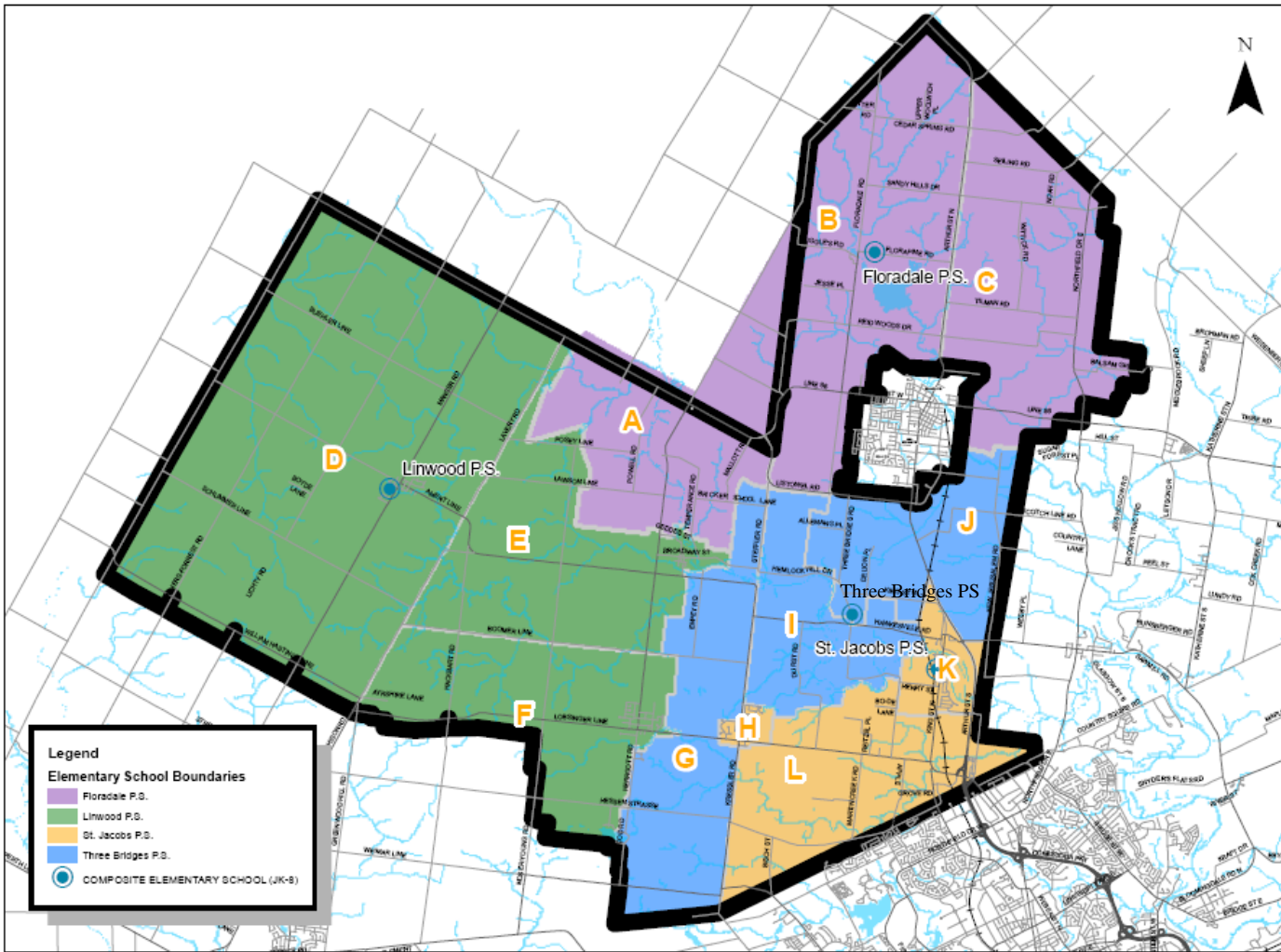
Details  
 No change to existing situation

### STATUS QUO

School	Built Capacity	Capacity with FDK	2012			2014			2016			2018			2020		
			JK-6	7-8	Total	JK-6	7-8	Total	JK-6	7-8	Total	JK-6	7-8	Total	JK-6	7-8	Total
Floradale P.S.	322	322	189	58	245	182	58	240	177	65	242	201	41	242	212	52	264
Linwood P.S.	510	585	359	98	455	389	87	456	381	91	472	397	88	485	400	101	501
St. Jacobs P.S.	348	?	255	58	313	243	71	314	238	67	305	240	68	308	249	63	312
Three Bridges P.S.	92	92	51	25	76	67	19	86	69	22	91	70	23	93	62	28	90
<b>Total</b>	<b>1272</b>		<b>854</b>	<b>235</b>	<b>1089</b>	<b>861</b>	<b>235</b>	<b>1096</b>	<b>865</b>	<b>245</b>	<b>1110</b>	<b>908</b>	<b>220</b>	<b>1128</b>	<b>923</b>	<b>244</b>	<b>1167</b>

# 4. Preliminary Scenario Discussion

## Woolwich and Wellesley Townships Review: Scenario 1



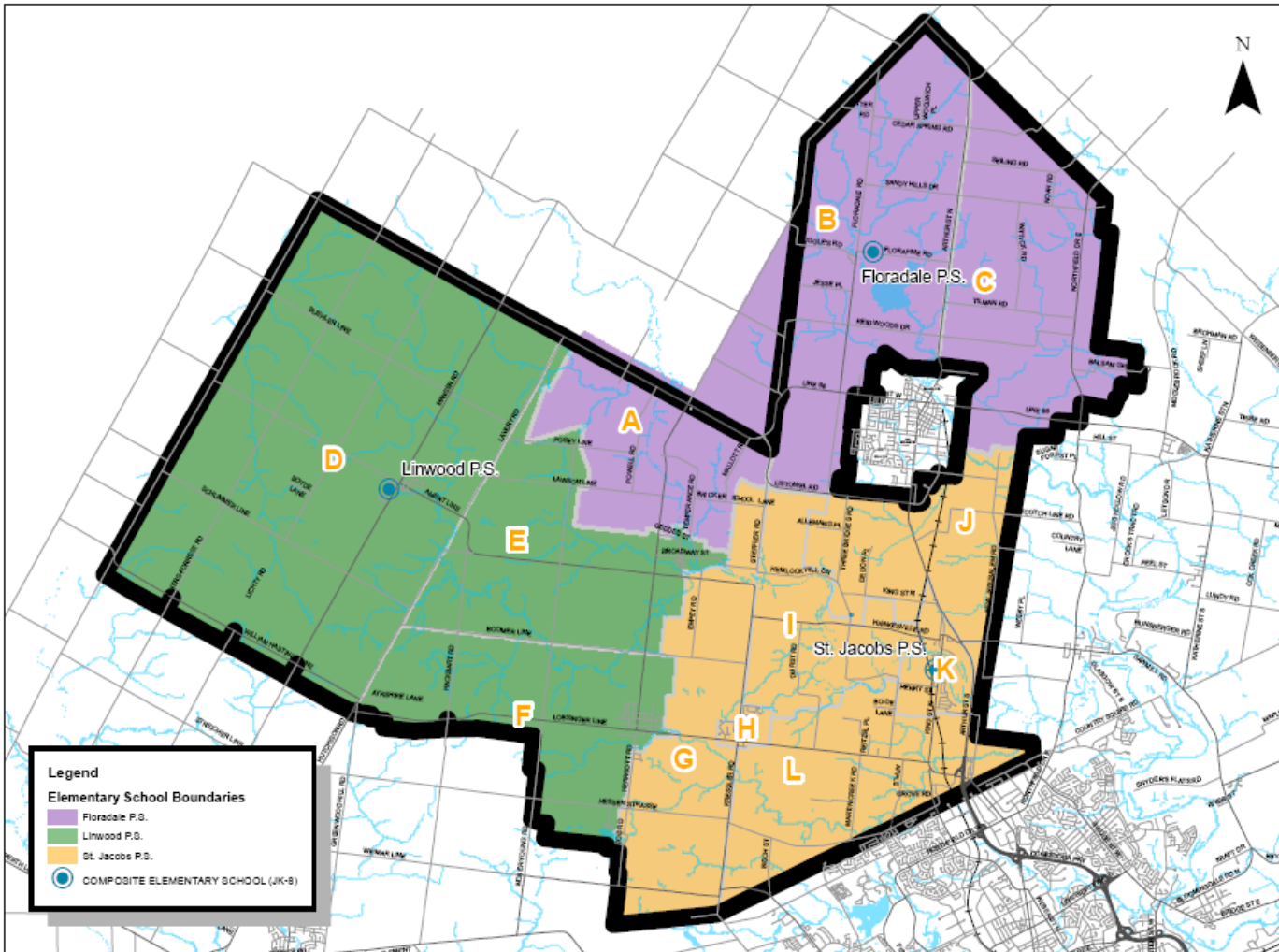
- Details
- Defined Boundary for Three Bridges PS (gets Areas G, I, J)
- St. Jacobs PS gets Areas H, K, L.
- All else remains same

Scenario 1

School	Built Capacity	Capacity with FDK	2012			2014			2016			2018			2020		
			JK-6	7-8	Total	JK-6	7-8	Total	JK-6	7-8	Total	JK-6	7-8	Total	JK-6	7-8	Total
Floradale P.S.	322	322	189	58	245	182	59	240	177	65	242	201	41	242	212	52	264
Linwood P.S.	510	565	359	98	455	369	87	456	381	91	472	397	88	485	400	101	501
St. Jacobs P.S.	348	?	235	57	292	234	69	303	229	67	296	238	58	296	245	62	307
Three Bridges P.S.	92	92	71	28	97	78	21	97	78	22	100	72	33	105	66	29	95
<b>Total</b>	<b>1272</b>		<b>854</b>	<b>235</b>	<b>1089</b>	<b>861</b>	<b>235</b>	<b>1096</b>	<b>865</b>	<b>245</b>	<b>1110</b>	<b>908</b>	<b>220</b>	<b>1128</b>	<b>923</b>	<b>244</b>	<b>1167</b>

# 4. Preliminary Scenario Discussion

## Woolwich and Wellesley Townships Review: Scenario 2



- Details
- Three Bridges PS closed. Students directed to St. Jacobs PS
- All else remains same

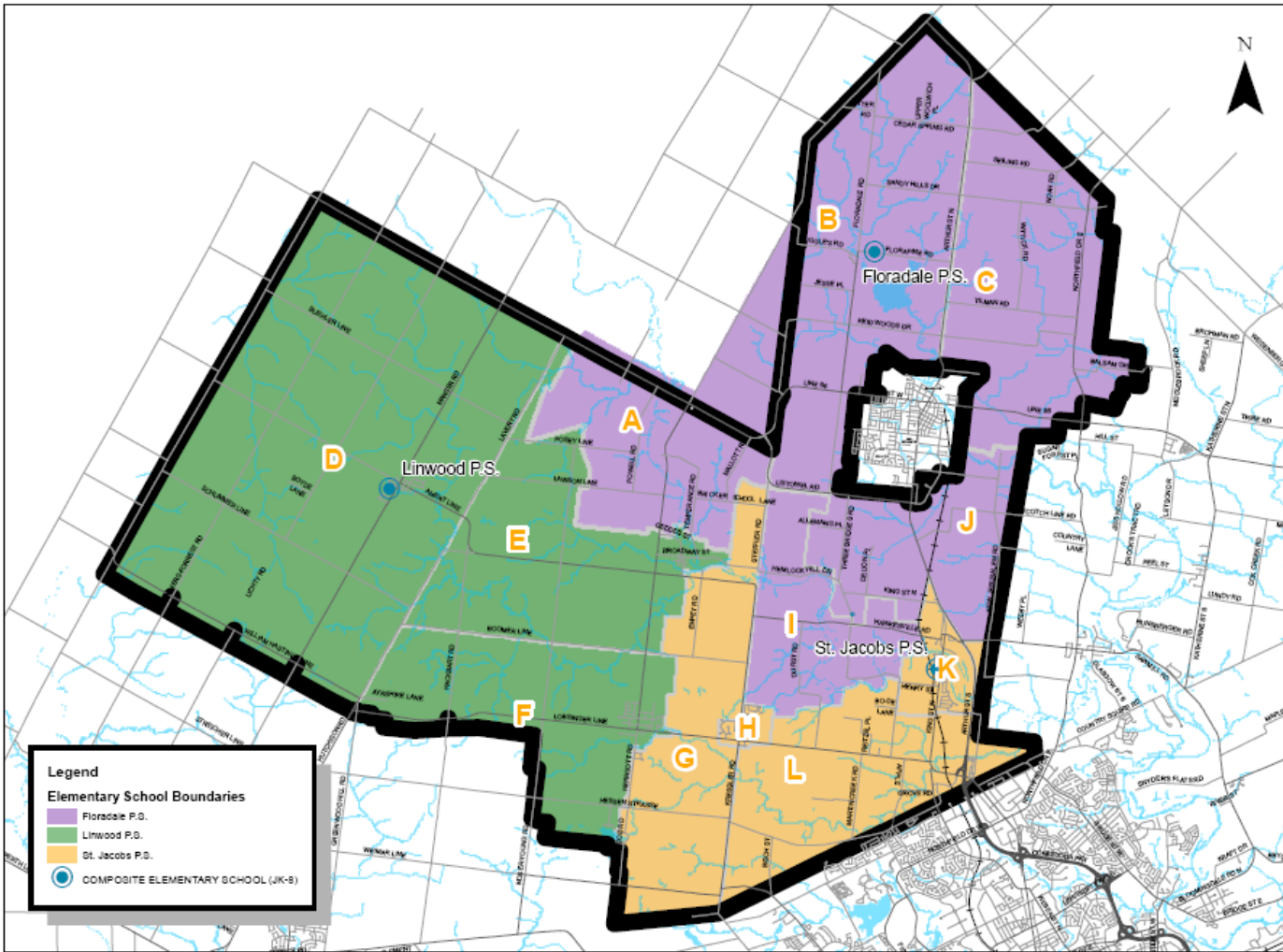
Scenario 2

School	Built Capacity	Capacity with FDK	2012			2014			2016			2018			2020		
			JK-6	7-8	Total	JK-6	7-8	Total	JK-6	7-8	Total	JK-6	7-8	Total	JK-6	7-8	Total
Floradale P.S.	322	322	189	58	245	182	58	240	177	65	242	201	41	242	212	52	264
Linwood P.S.	510	565	359	96	455	369	87	456	381	91	472	397	88	485	400	101	501
St. Jacobs P.S.	348	?	308	83	389	310	90	400	307	89	396	310	91	401	311	91	402
Three Bridges P.S.	92	92	0	0	0	0	0	0	0	0	0	0	0	0	0	0	0
<b>Total</b>	<b>1180</b>		<b>854</b>	<b>235</b>	<b>1089</b>	<b>861</b>	<b>235</b>	<b>1096</b>	<b>865</b>	<b>245</b>	<b>1110</b>	<b>908</b>	<b>220</b>	<b>1128</b>	<b>923</b>	<b>244</b>	<b>1167</b>



# 4. Preliminary Scenario Discussion

## Woolwich and Wellesley Townships Review: Scenario 3



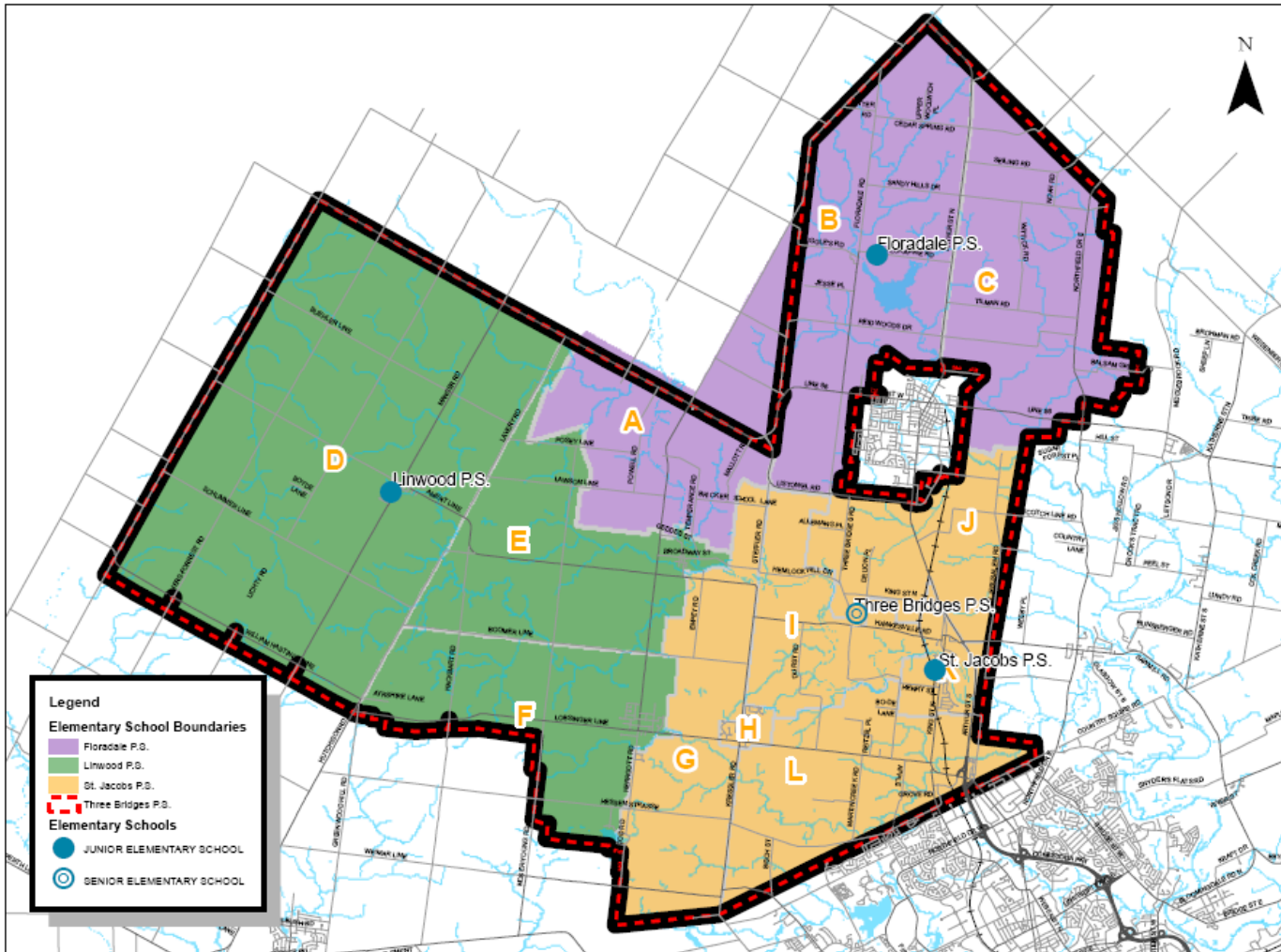
- Details
- Three Bridges PS closed. Students directed to St. Jacobs PS and Floradale PS.
- St. Jacobs PS gets Areas G, H, K, L.
- Floradale PS gets Areas I, J from St. Jacobs PS.

Scenario 3

School	Built Capacity	Capacity with FDK	2012			2014			2016			2018			2020		
			JK-6	7-8	Total	JK-6	7-8	Total	JK-6	7-8	Total	JK-6	7-8	Total	JK-6	7-8	Total
Floradale P.S.	322	322	231	74	305	225	72	297	220	81	301	241	80	301	248	69	315
Linwood P.S.	510	565	359	96	455	369	87	456	381	91	472	397	98	485	400	101	501
St. Jacobs P.S.	348	?	264	65	329	267	78	343	264	73	337	270	72	342	277	74	351
Three Bridges P.S.	92	92	0	0	0	0	0	0	0	0	0	0	0	0	0	0	0
<b>Total</b>	<b>1180</b>		<b>854</b>	<b>235</b>	<b>1089</b>	<b>861</b>	<b>235</b>	<b>1096</b>	<b>865</b>	<b>245</b>	<b>1110</b>	<b>908</b>	<b>220</b>	<b>1128</b>	<b>923</b>	<b>244</b>	<b>1167</b>

# 4. Preliminary Scenario Discussion

## Woolwich and Wellesley Townships Review: Scenario 4



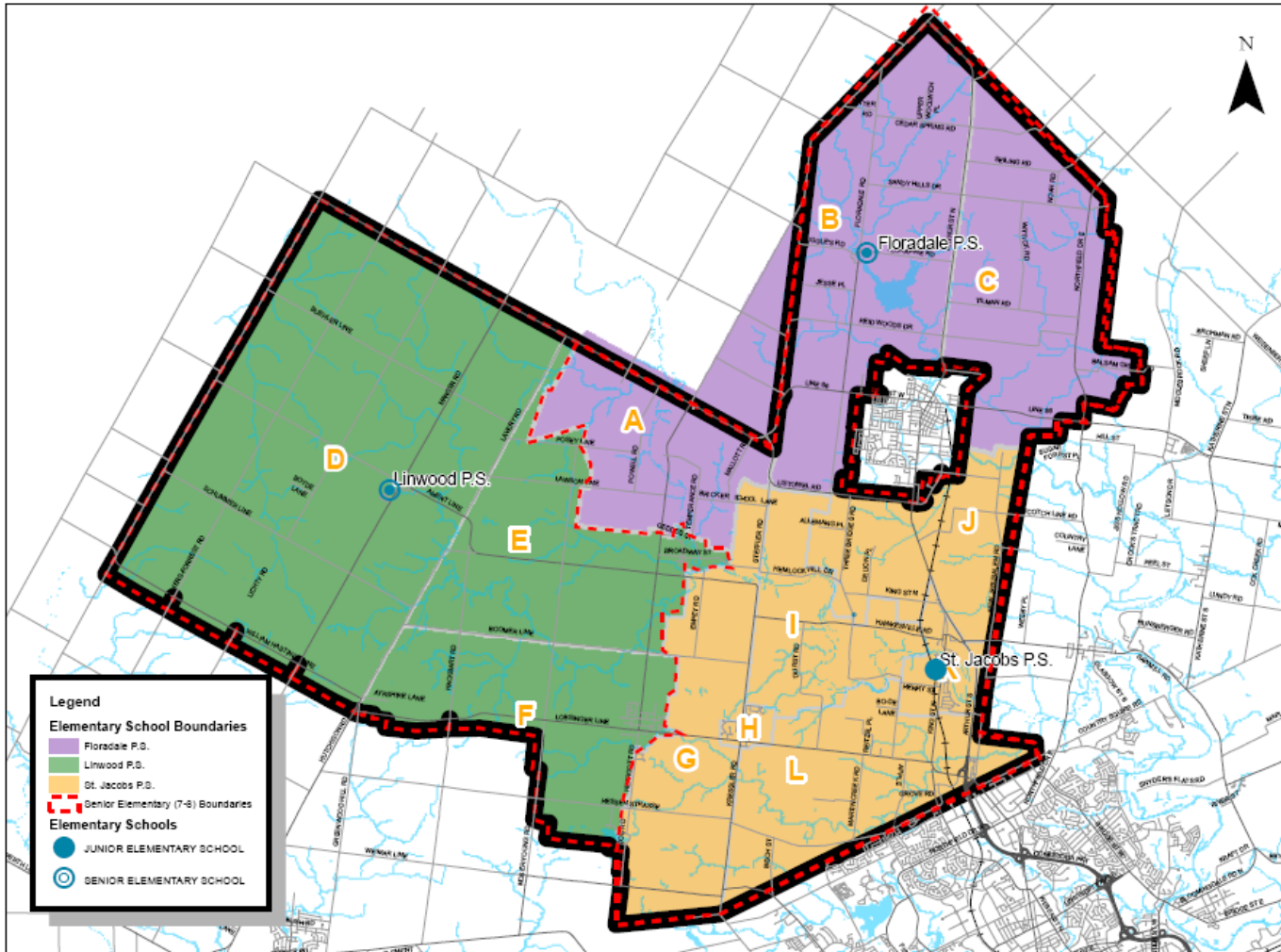
- Details
- Three Bridges PS converted to a senior elementary (7-8) school.
- Three Bridges PS JK-6 students directed to St. Jacobs PS
- Linwood PS, Floradale PS, St. Jacobs PS converted to JK-6.

Scenario 4

School	Built Capacity	Capacity with FDK	2012			2014			2016			2018			2020		
			JK-6	7-8	Total	JK-6	7-8	Total	JK-6	7-8	Total	JK-6	7-8	Total	JK-6	7-8	Total
Floradale P.S.	322	322	189	0	189	182	0	182	177	0	177	201	0	201	212	0	212
Linwood P.S.	510	565	359	0	359	369	0	369	381	0	381	397	0	397	400	0	400
St. Jacobs P.S.	348	?	306	0	306	310	0	310	307	0	307	310	0	310	311	0	311
Three Bridges P.S.	92	92	0	235	235	0	235	235	0	245	245	0	220	220	0	244	244
<b>Total</b>	<b>1272</b>		<b>854</b>	<b>235</b>	<b>1089</b>	<b>861</b>	<b>235</b>	<b>1096</b>	<b>865</b>	<b>245</b>	<b>1110</b>	<b>908</b>	<b>220</b>	<b>1128</b>	<b>923</b>	<b>244</b>	<b>1167</b>

# 4. Preliminary Scenario Discussion

## Woolwich and Wellesley Townships Review: Scenario 5



- Details
- Three Bridges PS closed. JK-6 students directed to St. Jacobs PS. 7-8 students directed to Floradale PS.
- St. Jacobs converts to JK-6. 7-8 students directed to Floradale PS.
- Linwood PS, no change

Scenario 5

School	Built Capacity	Capacity with FDK	2012			2014			2016			2018			2020		
			JK-6	7-8	Total	JK-6	7-8	Total	JK-6	7-8	Total	JK-6	7-8	Total	JK-6	7-8	Total
Floradale P.S.	322	322	170	139	309	177	148	325	176	154	330	201	132	333	212	143	355
Linwood P.S.	510	565	359	98	456	369	87	456	381	91	472	397	88	485	400	101	501
St. Jacobs P.S.	348	?	325	0	325	315	0	315	308	0	308	310	0	310	311	0	311
Three Bridges P.S.	92	92	0	0	0	0	0	0	0	0	0	0	0	0	0	0	0
<b>Total</b>	<b>1180</b>		<b>854</b>	<b>235</b>	<b>1089</b>	<b>861</b>	<b>235</b>	<b>1096</b>	<b>865</b>	<b>245</b>	<b>1110</b>	<b>908</b>	<b>220</b>	<b>1128</b>	<b>923</b>	<b>244</b>	<b>1167</b>

# Woolwich & Wellesley Townships Accommodation Review

### ARC # 9

- **Wednesday, February 22, 2012: 6:30- 8:00 p.m. St. Jacobs P.S. library**

### Public Meeting # 2: (tentative)

- **Feb 29, 2012 ?**
- **Mar 7, 2012 ?**



## Contact Information

- Website: [www.wrdsb.ca](http://www.wrdsb.ca)
  - » About>Planning>Accommodation Reviews
  - » Woolwich Wellesley Townships Accommodation Review
- E-mail: [boundaryfeedback@wrdsb.on.ca](mailto:boundaryfeedback@wrdsb.on.ca)
- Phone: 519-570-0003 ext. 4419

