

West Galt

Elementary Schools Pupil Accommodation Review

Accommodation Review Committee (ARC)

Meeting #6

February 1, 2012

St. Andrew's P.S. Library

5:30 – 7:00 pm



Waterloo Region
District School Board

Agenda

1. Welcome
2. ARC Meeting #5 – Draft Minutes Approval
3. Requested information
4. Ongoing: Scenario Discussion
5. Public Meeting #2
6. Future Meeting Dates
7. Roundtable/Wrap-up



Blair Road P.S.

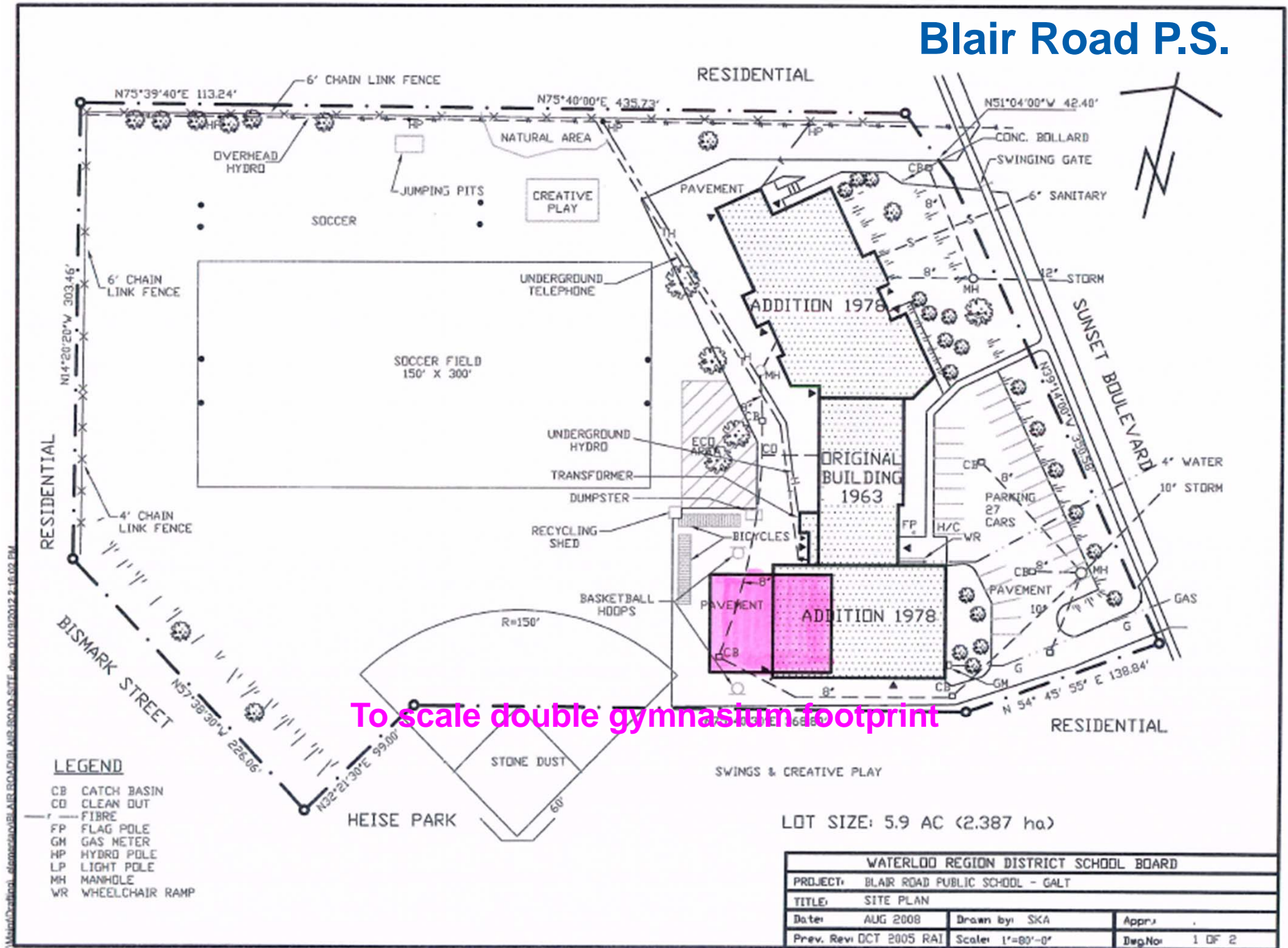
Requirements to become a 600 pupil place capacity JK-8 facility

Blair Road P.S.	
Current Capacity	279
Capacity with FDK modifications	294
Current # Classrooms	13
# additional classrooms required	14
Other considerations	2nd Gymnasium

COMMENTS:

- New building footprint would double current classroom footprint
 - May need to place complete second storey on school to minimize footprint
- No easy location to add parking spaces for additional staff (approx. 14 additional staff)
- Cost likely comparable to cost of new school (most recent comparison for size is Ryerson – approx. \$8 M)

Blair Road P.S.



To scale double gymnasium footprint

Dickson P.S.

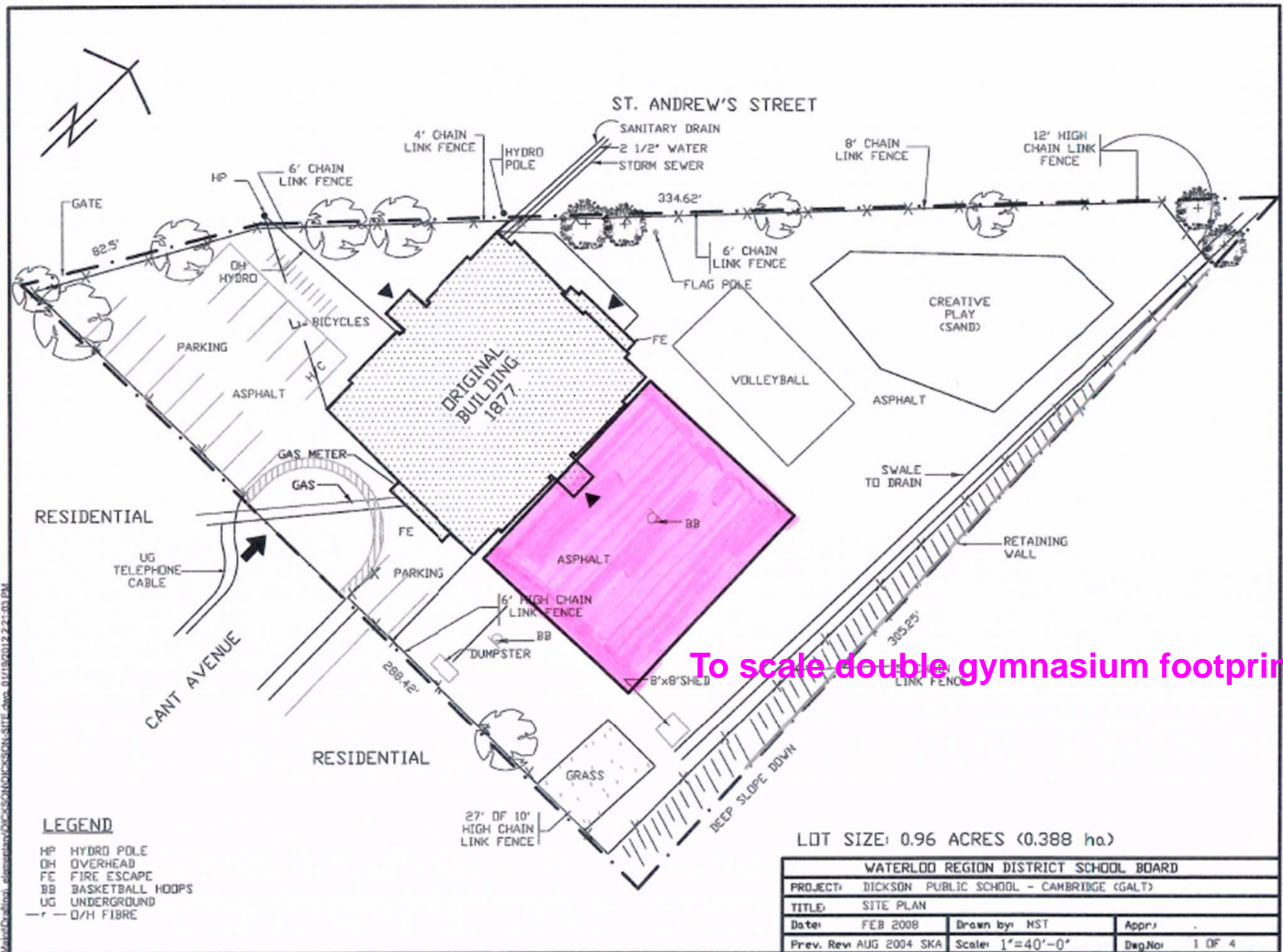
Requirements to become a 600 pupil place capacity JK-8 facility

Dickson P.S.	
Current Capacity	161
Capacity with FDK modifications	161
Current # Classrooms	7
# additional classrooms required	19
Other considerations	Double Gymnasium

COMMENTS:

- New building footprint would only be possible if existing structure were demolished and new building were multiple storeys (no room on the site)
- No location to add parking spaces for additional staff (approx. 19 additional staff)
- Site size not sufficient to accommodate 600 students

Dickson P.S.



Highland P.S.

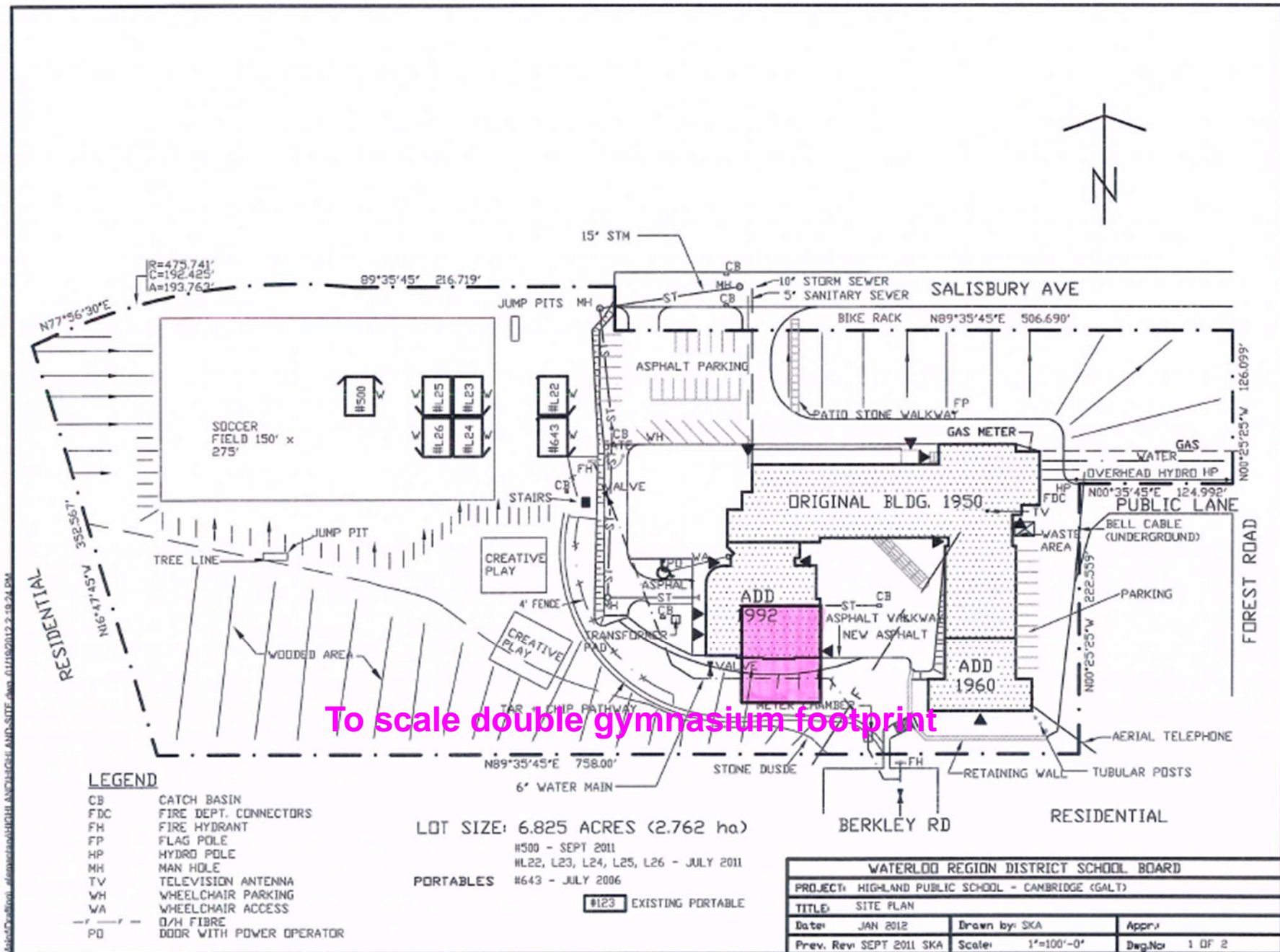
Requirements to become a 600 pupil place capacity JK-8 facility

Highland P.S.	
Current Capacity	348
Capacity with FDK modifications	464
# Classrooms in 2012	19
# additional classrooms required	7
Other considerations	2 nd Gymnasium

COMMENTS:

- 2nd gym could be added if retaining wall is built (\$\$)
- Already limited parking with current capacity – only location to add parking spaces for additional staff (approx. 7 additional staff) would be in the front of the school which would require a retaining wall (\$\$)
- Cost of infrastructure for 2nd storey on FDK addition would be same cost as an additional classroom.
- 454 should be capacity for life of the school - not recommended to have any further additions because of site limitations

Highland P.S.



St. Andrew's P.S.

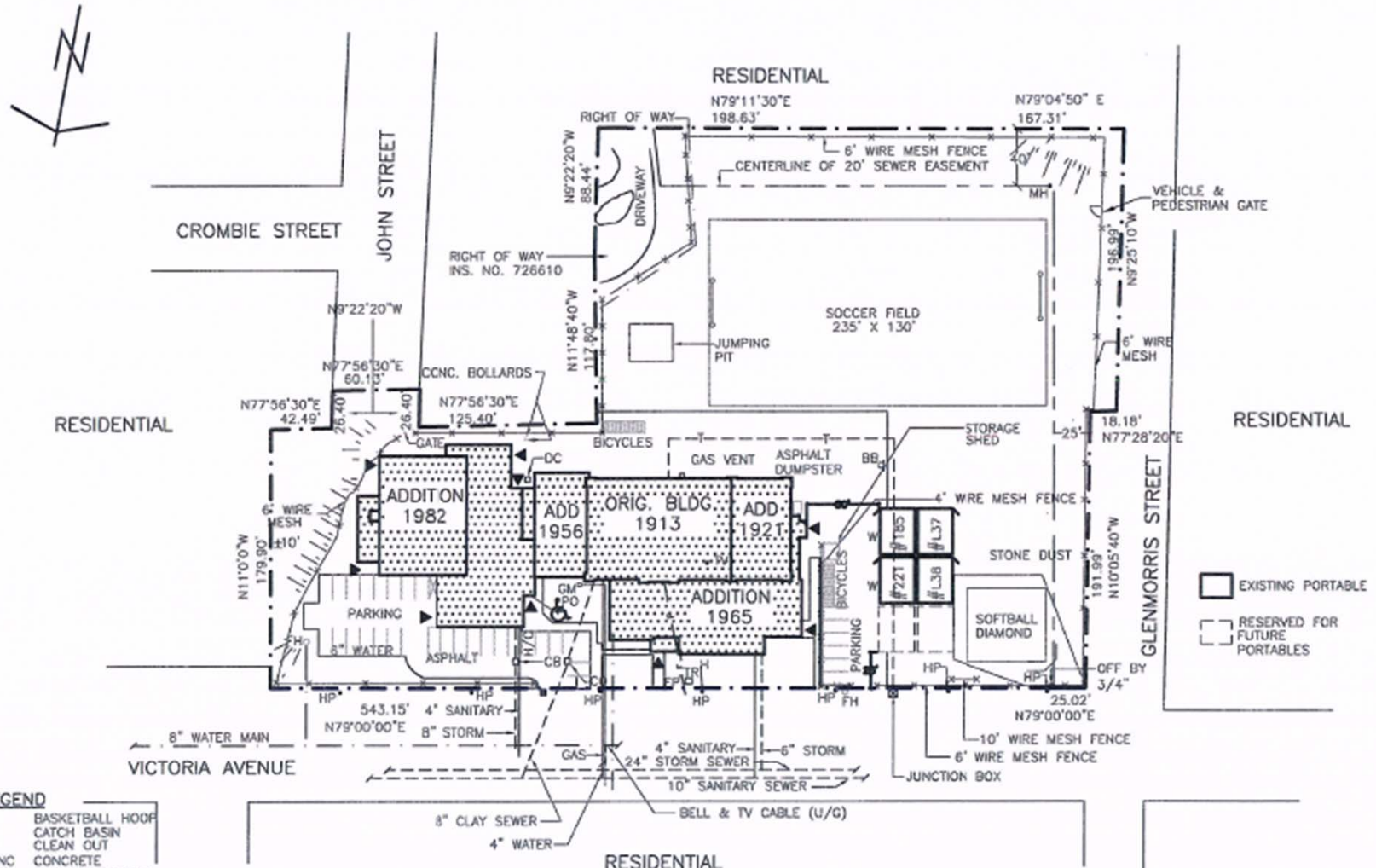
Requirements to become a 600 pupil place capacity JK-8 facility

St. Andrew's P.S.	
Current Capacity	424
Capacity with FDK modifications	N/A
Current # Classrooms	18
# additional classrooms required	8
Other considerations	Accessibility/Elevator

COMMENTS:

- School already has a double gym
- Addition could be two storey (4 rooms/floor) which could incorporate elevator and take care of some accessibility issues at the school
 - May be worthwhile moving main office to new addition
 - Addition would include FDK rooms
- Play area is constrained, site is not really large enough for a 600 pupil place school
- Maybe enough parking for additional staff (approx. 8-12 staff)
- Not ideal mainly because of site size

St. Andrew's P.S.



LEGEND

BB	BASKETBALL HOOP
CB	CATCH BASIN
CO	CLEAN OUT
CONC	CONCRETE
DC	DUST COLLECTOR
FH	FIRE HYDRANT
FP	FLAGPOLE
GM	GAS METER
H	UNDERGROUND HYDRO
HP	HYDRO POLE
MH	MANHOLE
T	TELEPHONE (UNDERGROUND)
TR	TRANSFORMER
TV	TELEVISION ANTENNA
— F —	O/H FIBRE
PO	POWER OPERATED DOOR

LOT SIZE : 4.025 AC (1.628 HA)

—#L37, L38 JULY 2011

—#221 FEB 2008

PORTABLE CLRM —#185 JULY 2002

WATERLOO REGION DISTRICT SCHOOL BOARD			
PROJECT: ST. ANDREW'S PUBLIC SCHOOL - CAMBRIDGE (G)			
TITLE: SITE PLAN			
DATE: AUG 2011	DRAWN BY: SKA	APPR.: .	
PREV REV: SEPT 2008 SKA	SCALE: 1"=110'00"—0"	DWG.NO: 1 OF 4	

Tait Street P.S.

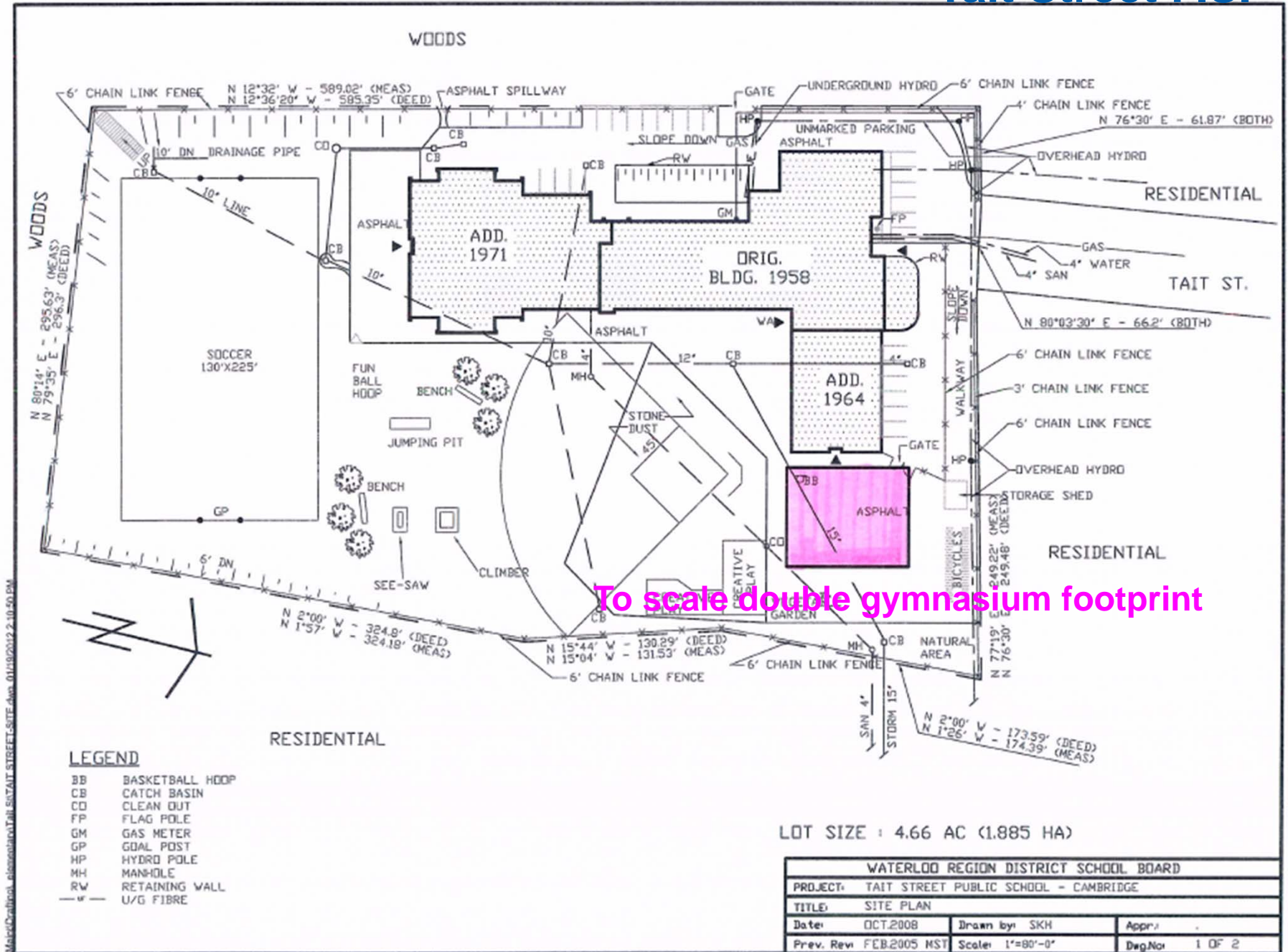
Requirements to become a 600 pupil place capacity JK-8 facility

Tait Street P.S.	
Current Capacity	348
Capacity with FDK modifications	unknown
Current # Classrooms	16
# additional classrooms required	11
Other considerations	Accessibility, 2 nd gym

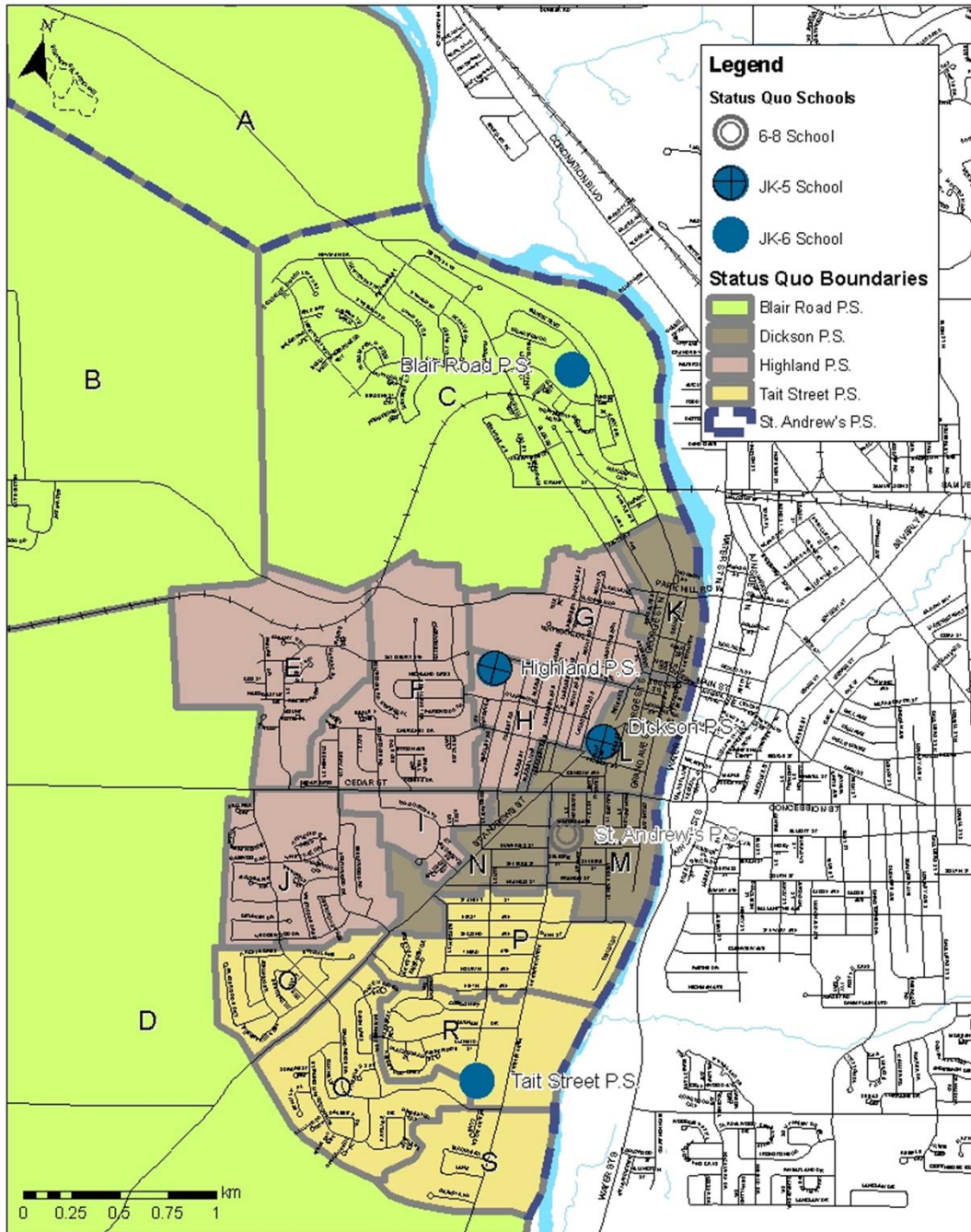
COMMENTS:

- Best option is to add second storey to front wing of school
- No room for additional parking (approx. 15 additional staff)
- No bus drop off location
- Not ideal or recommended

Tait Street P.S.



West Galt Status Quo



Status Quo

Blair Road P.S.

Areas A, B, C, D

Dickson P.S.

K, L, M, N

Highland P.S.

Areas E, F, G, H, I, J

St. Andrew's P.S.

Areas E, F, G, H, I, J, K, L, M, N (6-8)

Areas B, C, C, O, P, Q, R, S (7-8)

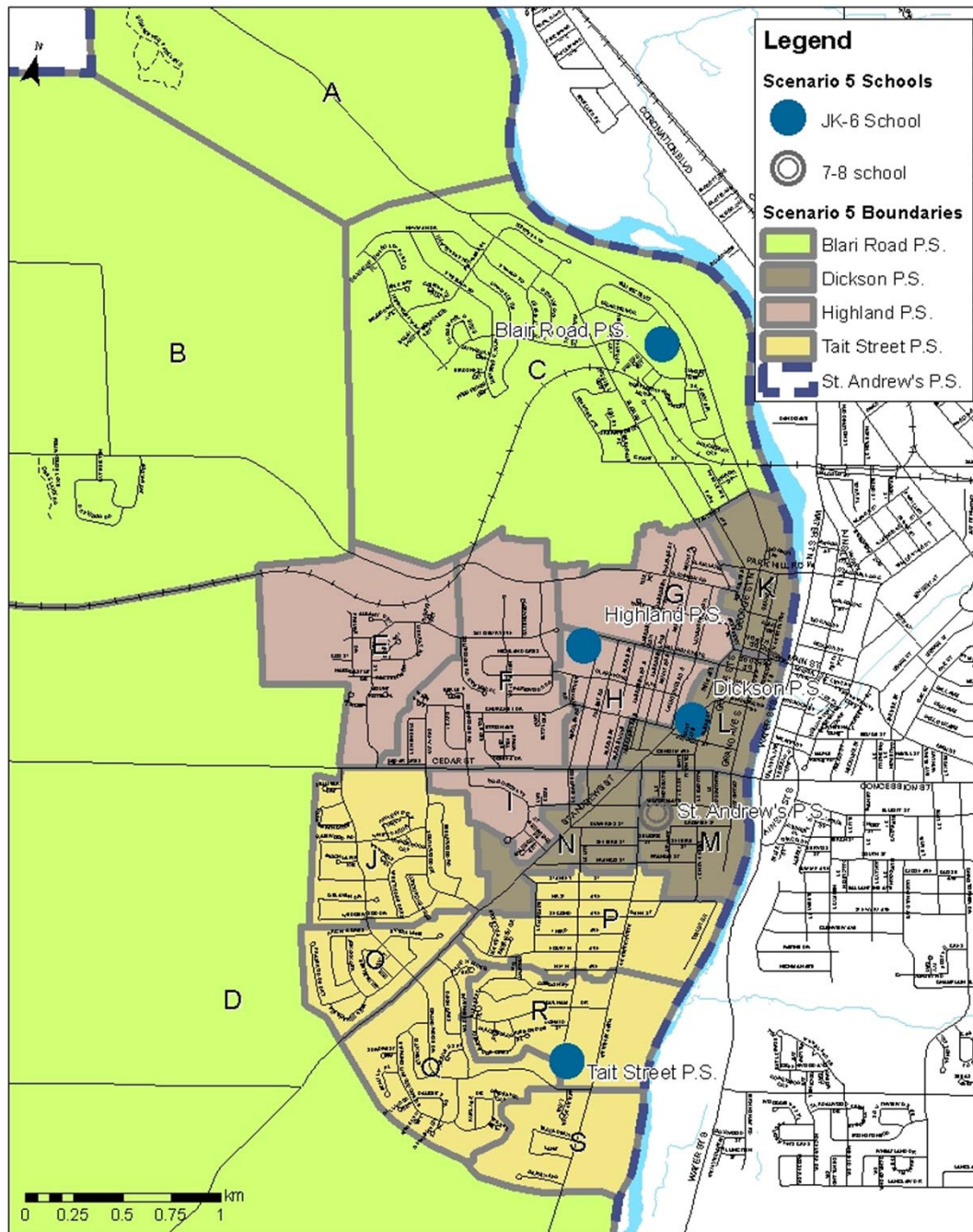
Tait Street P.S.

Areas O, P, Q, R, S

Status Quo Projected Enrolment

School	OTG Capacity	Grades	2013	2015	2017	2019	2021	FI	Spec Ed
Blair Road PS	294	JK-6	252	274	268	262	259		•
Dickson PS	161	JK-5	108	107	106	111	109		
Highland PS	464	JK-5	551	570	556	530	505	•	
St. Andrew's PS	424	6-8	399	383	332	382	396	•	
Tait Street PS	348	JK-6	292	283	300	314	332		
TOTAL	1691		1602	1617	1562	1599	1601		

West Galt Scenario 5



Scenario 5

Blair Road P.S.

Areas A, B, C, D

Dickson P.S.

K, L, M, N

Highland P.S.

Areas E, F, G, H, I

St. Andrew's P.S.

Areas A to S (7-8)

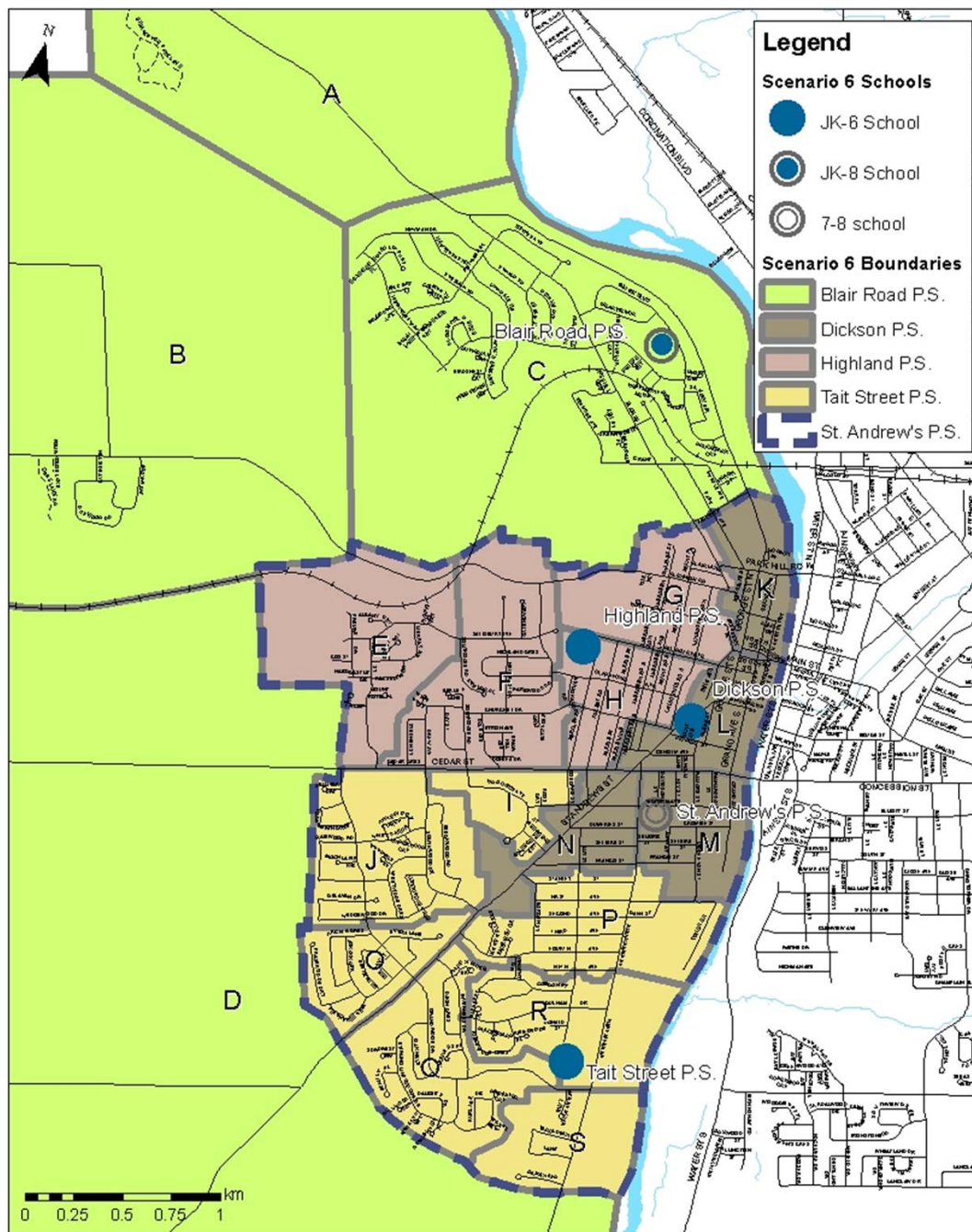
Tait Street P.S.

Areas J, O, P, Q, R, S

Scenario 5 Projected Enrolment

School	OTG Capacity	Grades	2013	2015	2017	2019	2021	FI	Spec Ed
Blair Road PS	294	JK-6	285	301	282	278	274	•	•
Dickson PS	161	JK-6	123	123	118	121	123		
Highland PS	464	JK-6	403	422	431	426	407	•	
St. Andrew's PS	424	7-8	331	309	263	300	314	•	
Tait Street PS	348	JK-6	460	462	468	474	483		
TOTAL	1691		1602	1617	1562	1599	1601		

West Galt Scenario 6



Scenario 6

Blair Road P.S.

Areas **A, B, C, D** (JK-8)

Dickson P.S.

K, L, M, N (JK-6)

Highland P.S.

Areas E, F, G, H (JK-6)

St. Andrew's P.S.

Areas **E to S** (7-8)

Tait Street P.S.

Areas **I, J, O, P, Q, R, S**

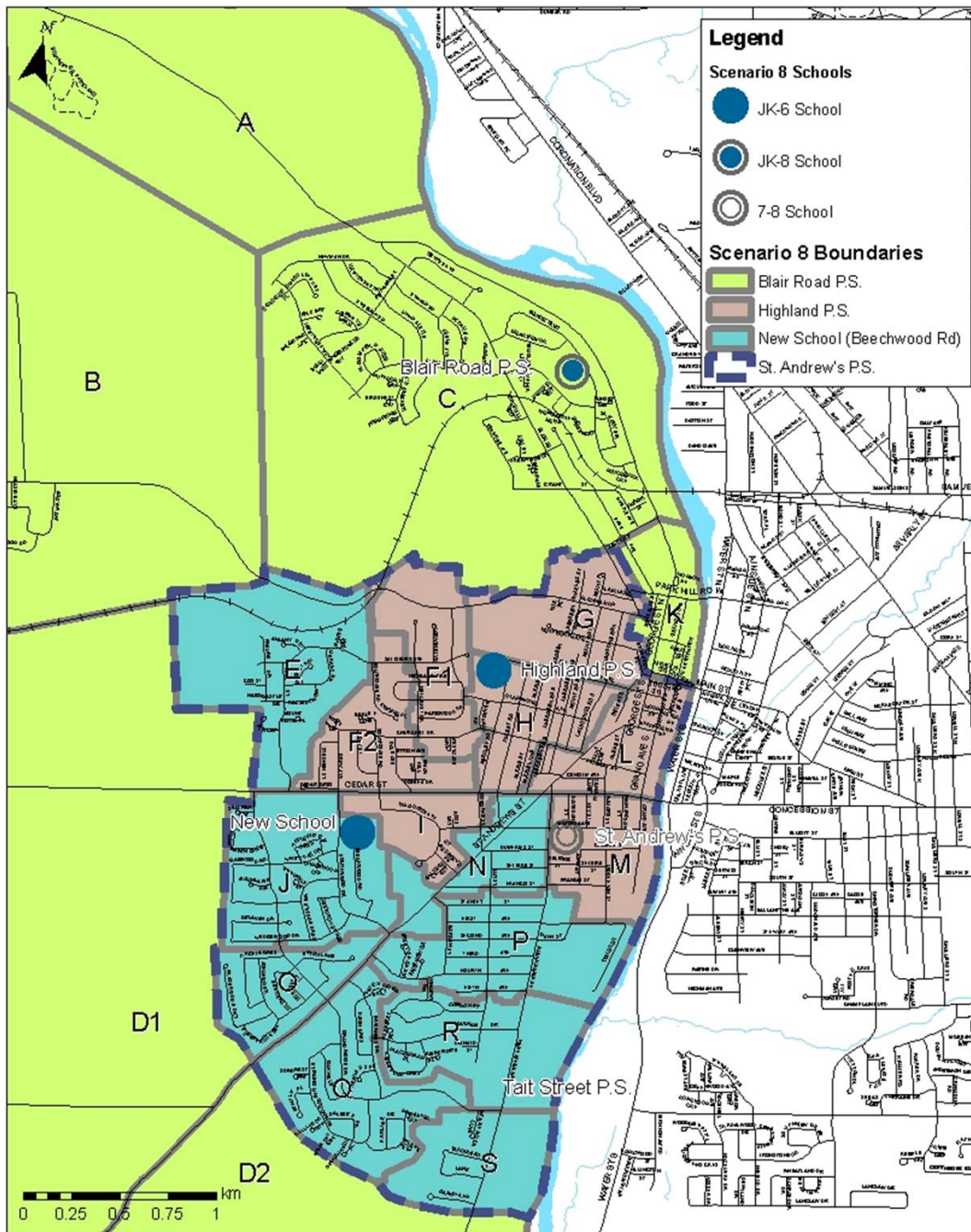
Scenario 6 Projected Enrolment

School	OTG Capacity	Grades	2013	2015	2017	2019	2021	FI	Spec Ed
Blair Road PS	294	JK-8	308	318	318	322	322		•
Dickson PS	161	JK-6	123	123	118	121	123		
Highland PS	464	JK-6	328	332	332	319	312	•	
St. Andrew's PS	424	7-8	276	265	212	238	248	•	
Tait Street PS	348	JK-6	567	579	592	599	596		
TOTAL	1691		1602	1617	1562	1599	1601		

Scenario 7

School	OTG Capacity	Grades	FI	Spec Ed
Blair Road PS	294	JK-8		•
Dickson PS	161	JK-8		
Highland PS	464	JK-8	•	
St. Andrew's PS	Closed			
Tait Street PS	348	JK-6		
TOTAL	1267			

West Galt Scenario 8



Scenario 8

Blair Road P.S.

Areas A, B, C, D, **K** (JK-8)

Highland P.S.

Areas F, G, H, I, **L, M** (JK-6)

St. Andrew's P.S.

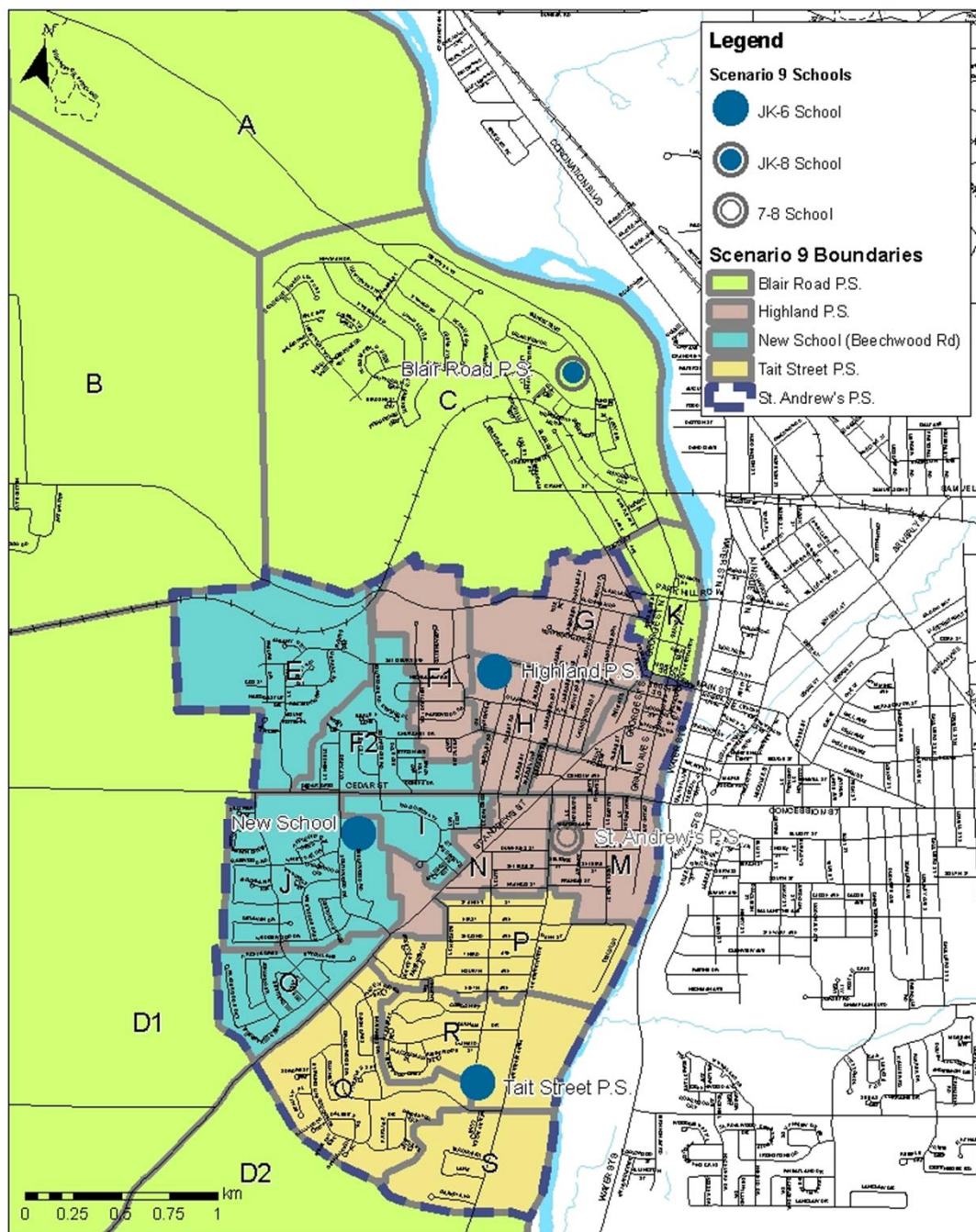
Areas E, F, G, H, I, J, L, M, N, O, P, Q, R, S (7-8)

New Beechwood Rd P.S.

Areas **E, J, N, O, P, Q, R, S** (JK-6)

Scenario 8 Projected Enrolment

School	OTG Capacity	Grades	2013	2015	2017	2019	2021	FI	Spec Ed
Blair Road PS	294	JK-8	313	323	324	331	333		•
Dickson PS	Closed								
Highland PS	464	JK-6	427	435	426	416	393	•	
St. Andrew's PS	424	7-8	274	264	210	236	248	•	
Tait Street PS	Closed								
New Beechwood Rd	600	JK-6	588	595	602	616	627		
TOTAL	1782		1602	1617	1562	1599	1601		



Scenario 9

Blair Road P.S.

Areas A, B, C, D, **K** (JK-8)

Highland P.S.

Areas F1, G, H, **L, M, N** (JK-6)

St. Andrew's P.S.

Areas E, F, G, H, I, J, L, M, N, O, P, Q, R, S (7-8)

Tait Street P.S.

Areas P, Q, R, S (JK-6)

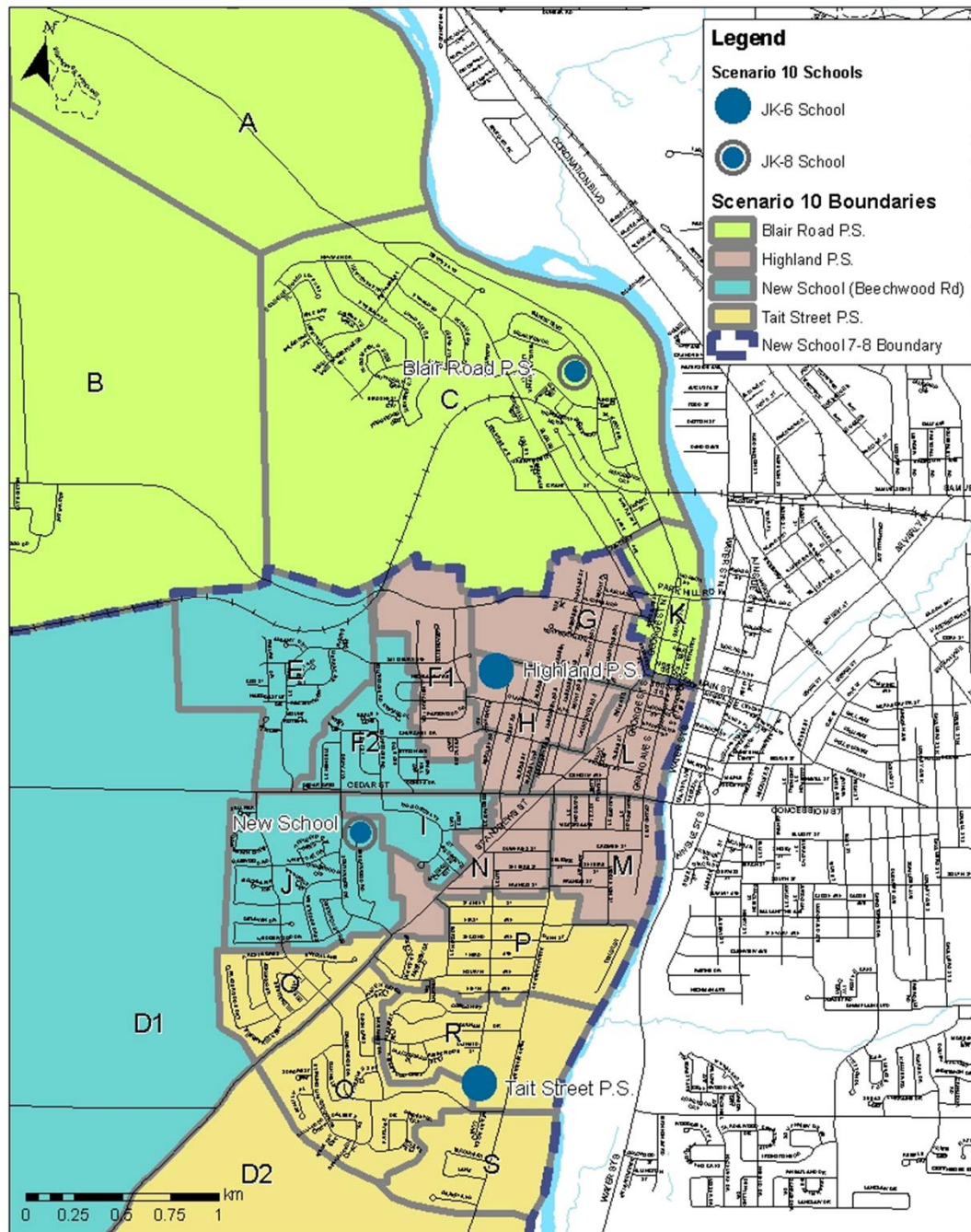
New Beechwood Rd P.S.

Areas **E, F2, I, J, O** (JK-6)

Scenario 9 Projected Enrolment

School	OTG Capacity	Grades	2013	2015	2017	2019	2021	FI	Spec Ed
Blair Road PS	294	JK-8	313	323	324	331	333		•
Dickson PS	Closed								
Highland PS	464	JK-6	343	337	311	310	299	•	
St. Andrew's PS	424	7-8	274	264	210	236	248	•	
Tait Street PS	348	JK-6	253	248	257	277	293		
New School Beechwood Rd	450	JK-6	419	444	460	445	428		
TOTAL	1980		1602	1617	1562	1599	1601		





Scenario 10

Blair Road P.S.

Areas A, B, C, **K** (JK-8)

Highland P.S.

Areas F1, G, H, **L, M, N** (JK-6)

Tait Street P.S.

Areas **D2**, O, P, Q, R, S (JK-6)

New Beechwood Rd P.S.

Areas **D1, E, F2, I, J** (JK-6)
 Areas **D, E, F, G, H, I, J, L, M, N, O, P, Q, R, S** (7-8)

Scenario 10 Projected Enrolment

School	OTG Capacity	Grades	2013	2015	2017	2019	2021	FI	Spec Ed
Blair Road PS	294	JK-8	280	288	284	288	288		•
Dickson PS	Closed								
Highland PS	464	JK-6	344	339	313	312	301	•	
St. Andrew's PS	Closed								
Tait Street PS	348	JK-6	312	306	325	343	361		
New Beechwood Rd	650	JK-8	666	684	640	656	651	•	
TOTAL	1756		1602	1617	1562	1599	1601		

Future Meeting Dates

- **ARC Meetings**

- ARC #7: Wednesday February 15, 2012 from 5:30-7:00 pm
- ARC #8: Wednesday March 7, 2012 from 5:30-7:00 pm

- **Public Meetings**

- Public Meeting # 2: Tentative – Thursday March 1, 2012 from 7:00-8:30 pm



Contact Information

- Website: www.wrdsb.ca
 - » About Us > Planning Department > Accommodation Reviews > West Galt Elementary Schools
 - » Search “West Galt Review”
- E-mail: boundaryfeedback@wrdsb.on.ca
- Phone: 519-570-0003 ext. 4419

