

Millen Woods Public School

School Travel Planning 2015



What is School Travel Planning?

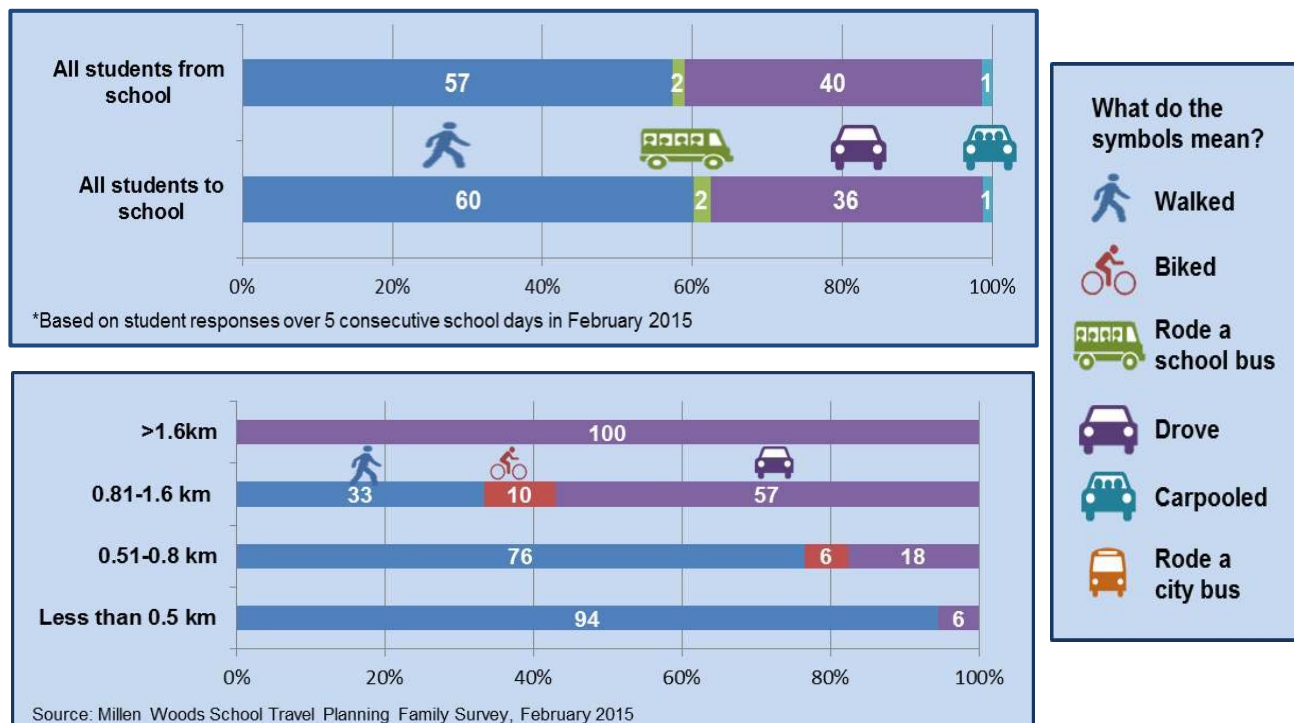
A School Travel Plan is a living document that belongs to the school. It is created using a process that involves collecting information to identify how students are getting to and from school and what barriers exist for students to walk, bike or use other forms of wheeled devices to school. From this information a group of people from the school and community organizations work together to reduce some of these barriers for families and children.

At Millen Woods, information was collected in January and February 2015. For five days, teachers asked students how they arrived at school and how they would be travelling home at the end of the day. Around the same time, families were asked to answer questions in a survey. A group of parents, teachers, staff and community partners also walked around the school neighbourhood to look at what was happening when students were arriving and leaving school.

This handout provides a summary of what we learned and how we are creating an action plan to make walking, biking and “rolling” to school easier and safer.

How do Millen Woods students get to and from school?

According to classroom hands-up counts, slightly more students walk home in the afternoon than walk to school in the morning. According to parents, children are more likely to be driven to school if they live more than 0.8 km from school.



Why parents let their children walk to school at Millen Woods

Walking to school is good for children's health



Walking to school fits with family routines



Walking to school is good for the environment



Students enjoy walking to school



Source: Millen Woods School Travel Planning Family Survey, February 2015

Parents of students at Millen Woods said they would allow their children to walk to school if...



Source: Millen Woods School Travel Planning Family Survey, February 2015

Why students are driven to school at Millen Woods



Parents are on their way somewhere else (usually to work)



Time pressures in the morning



Parents are concerned about traffic safety around the school

Source: Millen Woods School Travel Planning Family Survey, February 2015

Parents of students 11 years and older at Millen Woods said they would allow their children to **cycle** to school if...



Source: Millen Woods School Travel Planning Family Survey, February 2015

How are we using this information?

This information is being used to develop an action plan. The implementation of the action plan will aim to address the barriers to walking to school.