



# Fischer- Hallman/Huron Elementary Schools Boundary Study

**Working Group Meeting #3**  
**October 24, 2017**

1. Welcome/Introductions
2. Minutes Review/Approval
3. Boundary Feedback
4. Draft Objectives
5. Scenario Review
  - a) Seabrook/Fischer-Hallman roundabout crossing
  - b) Scenario 4
6. Future Meeting Dates
7. Round table

# Boundary Feedback

3 Pieces of correspondence received to date

- 2 from Huron Village community members
- 1 from concerned Gr. 4 student

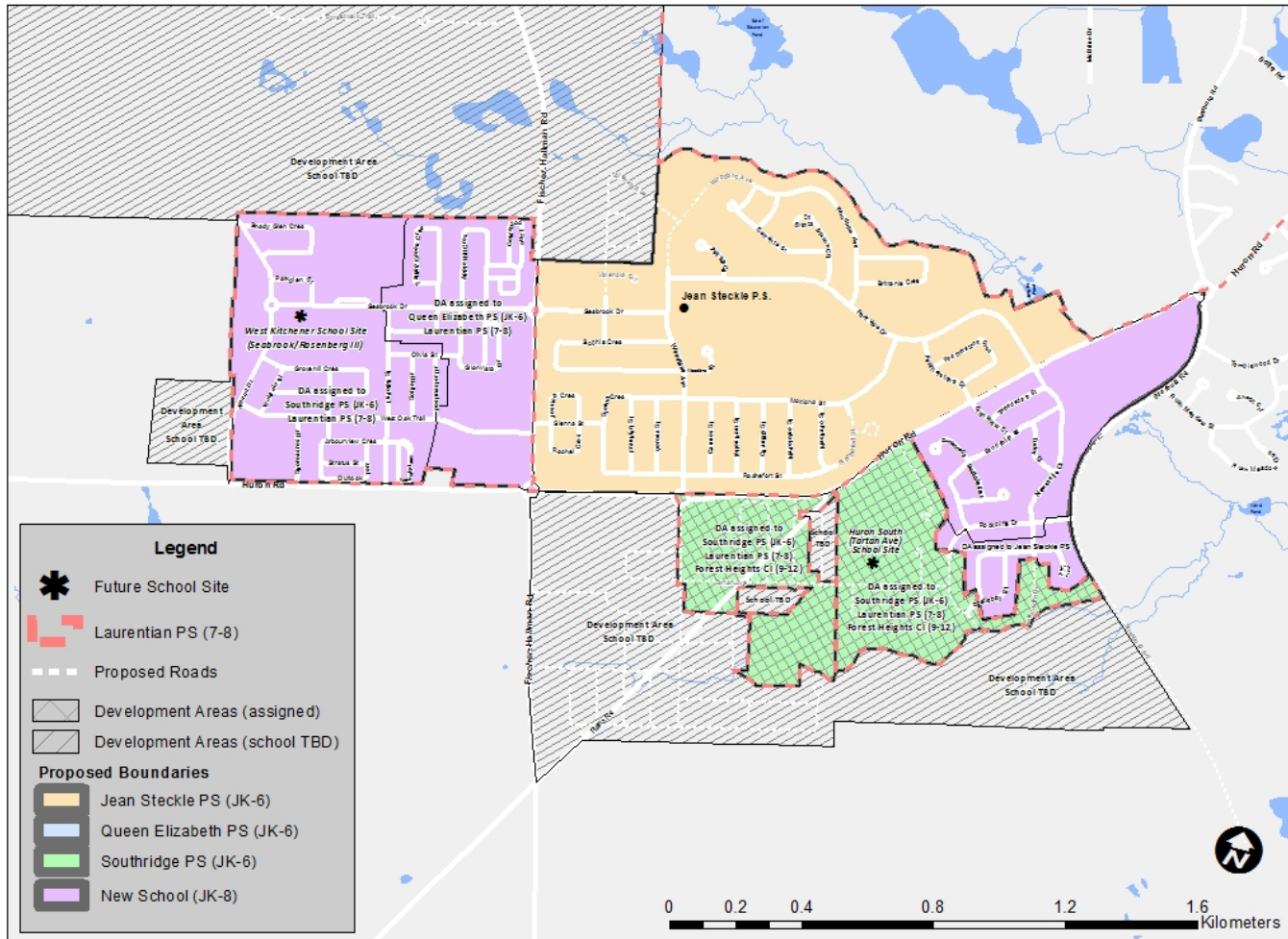
Correspondence is located in Public Google folder. Redacted to remove personal identifying information

# Draft Objectives

- Establish school attendance boundary for new Elementary school
- Reduce enrolment at Jean Steckle PS
- Maximize the use of built permanent capacity/Minimize the need for temporary accommodation (portables)
- Minimize transitions where changes are proposed

# Scenario 4

Fischer-Hallman/Huron Boundary Study Area - Scenario 4



- New boundary created for Seabrook Dr. school consisting of Mattamy 'Wildflowers' subdivision
- Grade 7, 8 phased out of Jean Steckle PS to be accommodated at new Seabrook Dr. school, phased back in when enrolment pressure allows
- Area of Jean Steckle PS boundary South of Huron Rd. assigned to New School

# Projected Enrolment – Scenario 4

School	Grades	Enrolment						Capacity (OTG)**
		2018	2020	2022	2024	2026	2028	
Jean Steckle PS	JK-6	779	725	708	668	638	606	715
Queen Elizabeth PS	JK-6	247	212	201	198	198	198	358
Southridge PS	JK-6	420	477	528	555	581	583	518
Laurentian PS	7-8	440	451	433	448	414	420	421
New School	JK-8*	436	599	658	687	677	666	669
<b>Total</b>		<b>2322</b>	<b>2464</b>	<b>2528</b>	<b>2556</b>	<b>2508</b>	<b>2473</b>	<b>2681</b>

\*New school will open as JK-7 in 2018, adding Gr. 8 in 2019

\*\*OTG (On-the-ground) capacity. Ministry of Education measure describing school capacity

# Projected Enrolment – Scenario 4

## School/Grade breakdown

### Jean Steckle PS – Regular Track

Year	JK	SK	1	2	3	4	5	6	7	8	Total
2018	83	88	59	64	56	69	72	70	0	90	651
2020	79	90	60	59	61	64	57	71	0	0	541
2022	74	84	58	62	62	59	61	67	0	0	528
2024	73	77	54	58	59	60	61	61	0	0	503
2026	72	76	54	54	55	56	57	62	0	0	485
2028	70	74	53	53	54	51	52	57	0	0	464

### Jean Steckle PS – French Immersion

Year	JK	SK	1	2	3	4	5	6	7	8	Total
2018	0	0	31	36	38	23	0	0	0	0	128
2020	0	0	31	30	30	35	36	22	0	0	184
2022	0	0	28	30	30	29	29	34	0	0	180
2024	0	0	25	27	27	29	29	28	0	0	165
2026	0	0	24	24	24	26	26	28	0	0	153
2028	0	0	23	23	23	23	24	25	0	0	142

# Projected Enrolment – Scenario 4

## School/Grade breakdown

### Queen Elizabeth PS – Regular Track

Year	JK	SK	1	2	3	4	5	6	Total
<b>2018</b>	31	31	27	26	23	32	30	47	<b>247</b>
<b>2020</b>	31	31	26	24	23	23	23	30	<b>212</b>
<b>2022</b>	31	31	26	24	22	22	23	22	<b>201</b>
<b>2024</b>	31	31	26	24	22	22	22	21	<b>198</b>
<b>2026</b>	31	31	26	24	22	22	22	21	<b>198</b>
<b>2028</b>	31	31	26	24	22	22	22	21	<b>198</b>



# Projected Enrolment – Scenario 4

## School/Grade breakdown

### Southridge PS – Regular Track

Year	JK	SK	1	2	3	4	5	6	Total
2018	50	52	24	32	29	28	26	41	281
2020	59	62	37	37	35	37	32	36	335
2022	64	66	41	41	42	36	32	41	363
2024	66	69	44	44	45	37	36	38	379
2026	70	73	48	48	49	39	38	40	405
2028	70	73	48	48	49	40	39	40	407

### Southridge PS – French Immersion\*

Year	JK	SK	1	2	3	4	5	6	Total
2018	0	0	30	22	18	17	28	25	139
2020	0	0	34	32	27	20	16	14	142
2022	0	0	34	32	31	29	24	16	165
2024	0	0	34	32	31	29	27	23	176
2026	0	0	34	32	31	29	27	23	176
2028	0	0	34	32	31	29	27	23	176

\* Students in French Immersion from new school neighbourhood assumed to remain at Southridge PS

# Projected Enrolment – Scenario 4

## School/Grade breakdown

### Laurentian PS – Regular Track

<b>Year</b>	<b>7</b>	<b>8</b>	<b>Total</b>
<b>2018</b>	199	241	<b>440</b>
<b>2020</b>	230	221	<b>451</b>
<b>2022</b>	220	213	<b>433</b>
<b>2024</b>	208	240	<b>448</b>
<b>2026</b>	203	212	<b>414</b>
<b>2028</b>	206	214	<b>420</b>

# Projected Enrolment – Scenario 4

## School/Grade breakdown

### New School – Regular Track

Year	JK	SK	1	2	3	4	5	6	7	8	Total
2018	48	48	51	40	43	32	36	42	97	0	436
2020	51	51	51	51	54	41	44	34	111	114	455
2022	51	51	51	51	51	49	52	41	103	105	471
2024	50	51	51	51	51	50	50	50	115	108	499
2026	49	49	50	51	51	50	50	50	112	110	501
2028	47	47	48	49	50	51	51	51	108	112	494

### New School – French Immersion\*#

Year	JK	SK	1	2	3	4	5	6	7	8	Total
2018	0	0	0	0	0	0	0	0	0	0	0
2020	0	0	0	0	0	0	0	0	0	0	0
2022	0	0	0	0	0	0	0	0	35	21	56
2024	0	0	0	0	0	0	0	0	28	33	61
2026	0	0	0	0	0	0	0	0	27	27	55
2028	0	0	0	0	0	0	0	0	25	27	52

\*Blue shaded grades represent progression of French Immersion program should a Gr. 1 French Immersion program begin at new school in 2019

# Students in French Immersion from new school 'south of Huron' assumed to remain at Jean Steckle PS

### Southridge PS

- ‘Wildflowers’ community students to attend new school Sept. 2018
  - Option for 2018 Gr. 6 students to finish at Southridge PS (with transportation), no siblings
  - French Immersion – students may remain at Southridge PS for the French Immersion program (with siblings). Transportation will not be provided (In accordance with Board Procedure – 4260 section 15.1)

### Queen Elizabeth PS

- ‘Wildflowers’ community students to attend new school Sept. 2018
  - Option for 2018 Gr. 6 students to finish at Queen Elizabeth PS (with transportation), no siblings

### Laurentian PS

- 'Wildflowers' community students to attend new school Sept. 2018
  - 2018 Gr. 8 students to finish at Laurentian PS (with transportation), no siblings

### Jean Steckle PS

- 2018 Gr. 7 students to attend new school (Jean Steckle PS JK-6, 8)
- 2019 Gr. 7 and Gr. 8 students to attend new school (Jean Steckle PS JK-6)
  - Transportation provided in accordance with Board Policy 4009 (if eligible by distance)

### Jean Steckle PS (S. of Huron Road community)

- 2018 JK- 7 students within 'South of Huron Rd. Community' to attend new school
  - 2018 Gr. 8 students within 'South of Huron Rd. Community' to attend Jean Steckle PS
- 2019 JK- 8 students within 'South of Huron Rd. Community' to attend new school
- 2020 (or beyond) JK- 7 students within 'South of Huron Rd. Community' to attend new school (Tartan Ave.)
- 2021 (or beyond) JK- 8 students within 'South of Huron Rd. Community' to attend new school (Tartan Ave.)

Draft Objective	Comments
Establish school attendance boundary for new Elementary school	<ul style="list-style-type: none"><li>• Yes.</li></ul>
Reduce enrolment at Jean Steckle PS	<ul style="list-style-type: none"><li>• Reduces peak enrolment at Jean Steckle PS by 255 students</li></ul>
Maximize the use of built permanent capacity/Minimize the need for temporary accommodation (portables)	<ul style="list-style-type: none"><li>• Reduces most portables at Jean Steckle PS.</li><li>• Leaves least surplus permanent capacity at new school than other options.</li></ul>

Draft Objective	Comments
Minimize transitions where changes are proposed	<ul style="list-style-type: none"><li>• Transitions for Queen Elizabeth, Southridge students to new school.</li><li>• Students 'graduate' into new school from Jean Steckle when changing to JK-6 organization.</li><li>• Students 'graduate' back to Jean Steckle when Gr. 7, 8 returned.</li><li>• Transitions for 'S of Huron Rd.' from Jean Steckle to new school (Seabrook)</li><li>• Transitions for 'S of Huron Rd.' from new school (Seabrook) to new school (Tartan).</li></ul>
*Other	<ul style="list-style-type: none"><li>• Program challenges – FI grade disconnect at new facility. Staff and resources.</li></ul>



# Scenario 3, 4

## Proposed Scenario Transitions – South of Huron Rd. Community

Grade	Year									
	2012	2013	2014	2015	2016	2017	2018	2019	2020	2021
JK	ALP	JST	JST	JST	JST	JST	Seabrook	Seabrook	Tartan	Tartan
SK	ALP	JST	JST	JST	JST	JST	Seabrook	Seabrook	Tartan	Tartan
1	ALP	JST	JST	JST	JST	JST	Seabrook	Seabrook	Tartan	Tartan
2	ALP	JST	JST	JST	JST	JST	Seabrook	Seabrook	Tartan	Tartan
3	ALP	JST	JST	JST	JST	JST	Seabrook	Seabrook	Tartan	Tartan
4	ALP	JST	JST	JST	JST	JST	Seabrook	Seabrook	Tartan	Tartan
5	ALP	JST	JST	JST	JST	JST	Seabrook	Seabrook	Tartan	Tartan
6	ALP	JST	JST	JST	JST	JST	Seabrook	Seabrook	Tartan	Tartan
7	LAU	JST	JST	JST	JST	JST	Seabrook	Seabrook	Tartan	Tartan
8	LAU	LAU	JST	JST	JST	JST	Seabrook	Seabrook	Seabrook	Tartan

Number of Students S. of Huron Rd. attending Jean Steckle PS in 2017 who were attending Alpine PS in 2012

- Grades 4-6 – 15 students
- Grade 7 – 4 students

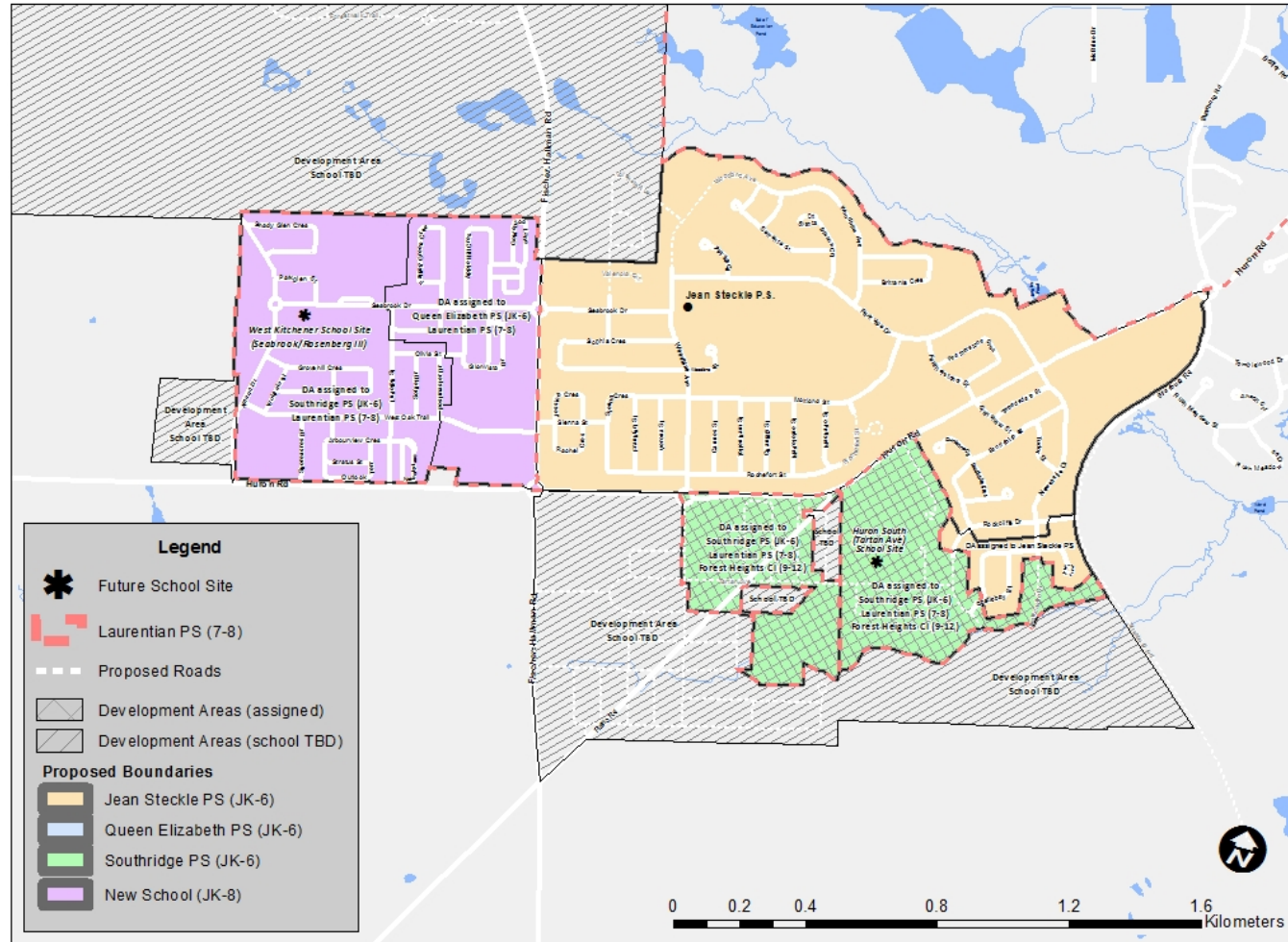
# Important Dates

- Working Group # 4: November 7, 2017, 3:30-5:00 pm, Jean Steckle PS library
- Working Group # 5: November 21, 2017, 3:30-5:00 pm, Jean Steckle PS library
- Public Meeting #2: November 21, 2017, 7:00-8:30 pm, Jean Steckle PS Gymnasium

# Contact Information

- Website: [www.wrdsb.ca](http://www.wrdsb.ca)
- About>Planning>Boundary Studies
- Fischer-Hallman/Huron Boundary Study (Elementary)
  
- E-mail: [boundaryfeedback@wrdsb.ca](mailto:boundaryfeedback@wrdsb.ca)
  
- Phone: 519-570-0003 ext. 4419

Fischer-Hallman/Huron Boundary Study Area - Scenario 2



# Scenario 2

- New boundary established for Seabrook Dr. school consisting of Mattamy 'Wildflowers' subdivision
- Grade 7, 8 phased out of Jean Steckle PS to be accommodated at new Seabrook Dr. school, phased back in when enrolment pressure allows

# Projected Enrolment – Scenario 2

School	Grades	Enrolment						Capacity (OTG)**
		2018	2020	2022	2024	2026	2028	
Jean Steckle PS	JK-6	863	840	829	788	760	727	<b>715</b>
Queen Elizabeth PS	JK-6	247	212	201	198	198	198	358
Southridge PS	JK-6	420	477	528	555	581	583	518
Laurentian PS	7-8	440	451	433	448	415	420	421
New School	JK-8*	350	489	549	578	569	559	669
<b>Total</b>		<b>2320</b>	<b>2469</b>	<b>2540</b>	<b>2567</b>	<b>2523</b>	<b>2487</b>	<b>2635</b>

\*New school will open as JK-7 in 2018, adding Gr. 8 in 2019

\*\*OTG (On-the-ground) capacity. Ministry of Education measure describing school capacity

# Projected Enrolment – Scenario 2

## School/Grade breakdown

### Jean Steckle PS – Regular Track

Year	JK	SK	1	2	3	4	5	6	7	8	Total
2018	96	101	73	69	68	80	88	87	0	65	728
2020	93	105	70	70	76	70	70	83	0	0	638
2022	88	99	69	73	73	70	77	73	0	0	623
2024	87	92	65	69	70	71	71	71	0	0	596
2026	86	91	65	66	67	66	68	72	0	0	581
2028	84	90	64	65	66	61	63	67	0	0	560

### Jean Steckle PS – French Immersion

Year	JK	SK	1	2	3	4	5	6	7	8	Total
2018	0	0	39	36	38	23	0	0	0	0	135
2020	0	0	35	35	38	35	36	22	0	0	201
2022	0	0	33	35	34	34	37	34	0	0	206
2024	0	0	30	31	32	34	33	33	0	0	192
2026	0	0	28	28	29	31	31	33	0	0	179
2028	0	0	27	27	28	28	28	30	0	0	167

# Projected Enrolment – Scenario 2

## School/Grade breakdown

### Queen Elizabeth PS – Regular Track

Year	JK	SK	1	2	3	4	5	6	Total
2018	31	31	27	26	23	32	30	47	247
2020	31	31	26	24	23	23	23	30	212
2022	31	31	26	24	22	22	23	22	201
2024	31	31	26	24	22	22	22	21	198
2026	31	31	26	24	22	22	22	21	198
2028	31	31	26	24	22	22	22	21	198



# Projected Enrolment – Scenario 2

## School/Grade breakdown

### Southridge PS – Regular Track

Year	JK	SK	1	2	3	4	5	6	Total
2018	50	52	24	32	29	28	26	41	281
2020	59	62	37	37	35	37	32	36	335
2022	64	66	41	41	42	36	32	41	363
2024	66	69	44	44	45	37	36	38	379
2026	70	73	48	48	49	39	38	40	405
2028	70	73	48	48	49	40	39	40	407

### Southridge PS – French Immersion\*

Year	JK	SK	1	2	3	4	5	6	Total
2018	0	0	30	22	18	17	28	25	139
2020	0	0	34	32	27	20	16	14	142
2022	0	0	34	32	31	29	24	16	165
2024	0	0	34	32	31	29	27	23	176
2026	0	0	34	32	31	29	27	23	176
2028	0	0	34	32	31	29	27	23	176

\* Students in French Immersion from new school neighbourhood assumed to remain at Southridge PS

# Projected Enrolment – Scenario 2

## School/Grade breakdown

### Laurentian PS – Regular Track

<b>Year</b>	<b>7</b>	<b>8</b>	<b>Total</b>
<b>2018</b>	199	241	<b>440</b>
<b>2020</b>	230	221	<b>451</b>
<b>2022</b>	220	213	<b>433</b>
<b>2024</b>	208	240	<b>448</b>
<b>2026</b>	203	212	<b>415</b>
<b>2028</b>	206	214	<b>420</b>

# Projected Enrolment – Scenario 2

## School/Grade breakdown

### New School– Regular Track

Year	JK	SK	1	2	3	4	5	6	7	8	Total
2018	35	35	29	35	31	21	20	24	97	0	326
2020	36	36	36	36	30	35	31	22	112	115	489
2022	36	36	36	36	36	35	29	35	104	108	491
2024	36	37	37	37	37	36	36	36	108	110	508
2026	35	36	36	37	37	36	36	36	108	108	504
2028	33	34	35	35	36	36	36	36	105	109	496

### New School – French Immersion

Year	JK	SK	1	2	3	4	5	6	7	8	Total
2018	0	0	0	0	0	0	0	0	0	0	0
2020	0	0	0	0	0	0	0	0	0	0	0
2022	0	0	0	0	0	0	0	0	36	22	58
2024	0	0	0	0	0	0	0	0	36	34	70
2026	0	0	0	0	0	0	0	0	33	33	66
2028	0	0	0	0	0	0	0	0	30	33	63

\* Blue shaded grades represent progression of French Immersion program should a Gr. 1 French Immersion program begin at new school in 2019

# Scenario 2

## Proposed Scenario Transitions

### Southridge PS

- ‘Wildflowers’ community students to attend new school Sept. 2018
  - Option for 2018 Gr. 6 students to finish at Southridge PS (with transportation), no siblings
  - French Immersion – students may remain at Southridge PS for the French Immersion program (with siblings). Transportation will not be provided (In accordance with Board Procedure – 4260 section 15.1)

### Queen Elizabeth PS

- ‘Wildflowers’ community students to attend new school Sept. 2018
  - Option for 2018 Gr. 6 students to finish at Queen Elizabeth PS (with transportation), no siblings

# Scenario 2

## Proposed Scenario Transitions

### Laurentian PS

- 'Wildflowers' community students to attend new school Sept. 2018
  - 2018 Gr. 8 students to finish at Laurentian PS (with transportation), no siblings

### Jean Steckle PS

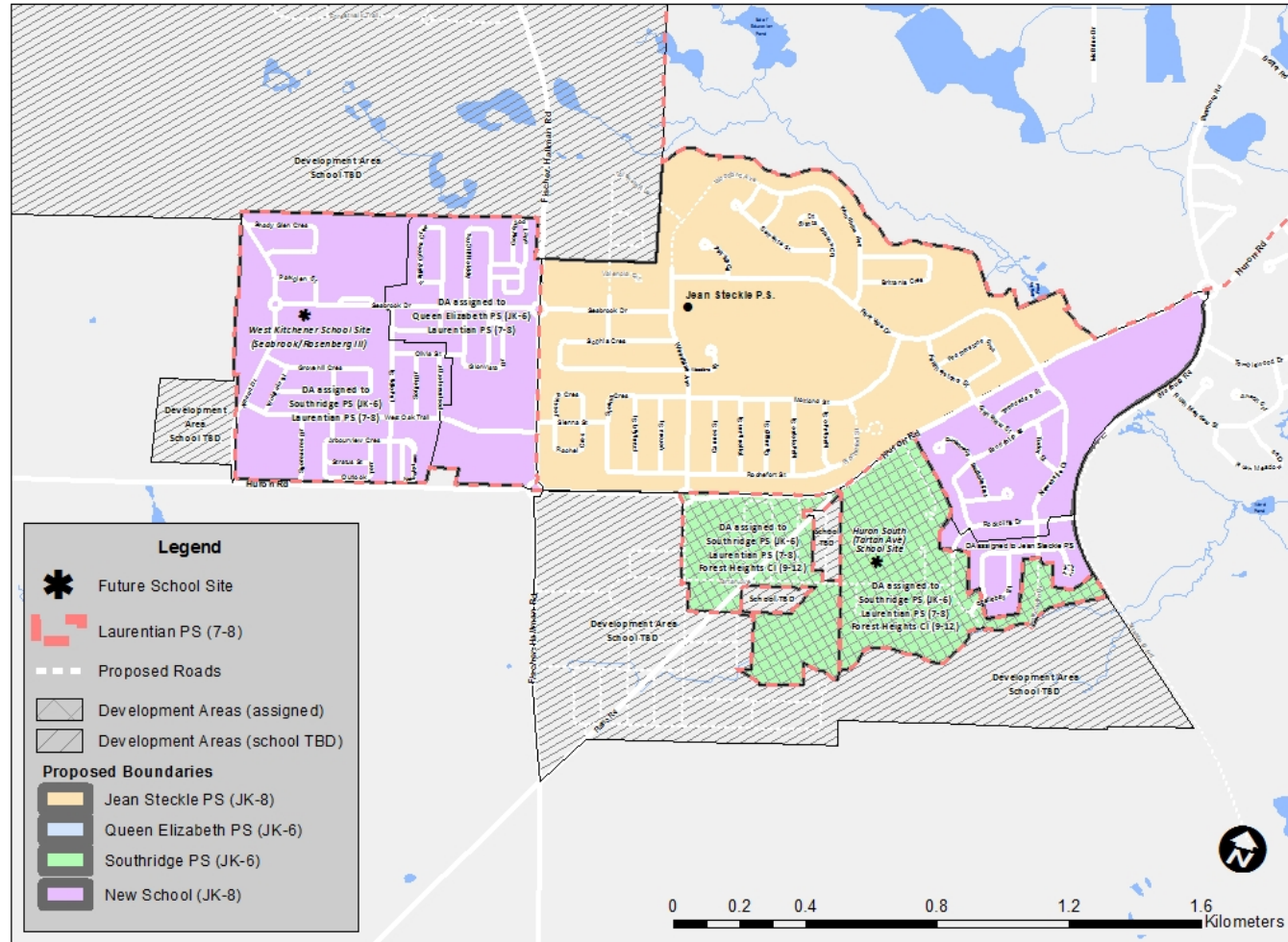
- 2018 Gr. 7 students to attend new school (Jean Steckle PS JK-6, 8)
- 2019 Gr. 7 and Gr. 8 students to attend new school (Jean Steckle PS JK-6)
  - Transportation provided in accordance with Board Policy 4009 (if eligible by distance)

# Scenario 2

## Draft Objectives - Scenario Evaluation

Draft Objective	Comments
Establish school attendance boundary for new Elementary school	<ul style="list-style-type: none"><li>• Yes</li></ul>
Reduce enrolment at Jean Steckle PS	<ul style="list-style-type: none"><li>• Yes. Peak enrolment reduced at Jean Steckle PS by 194 students</li></ul>
Maximize the use of built permanent capacity/Minimize the need for temporary accommodation (portables)	<ul style="list-style-type: none"><li>• Reduces portables at Jean Steckle PS.</li><li>• Accommodates most students in permanent capacity than other options.</li></ul>
Minimize transitions where changes are proposed	<ul style="list-style-type: none"><li>• Transitions for Queen Elizabeth, Southridge students to new school.</li><li>• Students 'graduate' into new school from Jean Steckle when changing to JK-6 organization.</li><li>• Students 'graduate' back to Jean Steckle when Gr. 7, 8 returned.</li></ul>
*Other	<ul style="list-style-type: none"><li>• Program challenges – FI grade disconnect at new facility. Staff and resources.</li></ul>

# Scenario 3



- New boundary established for Seabrook Dr. school consisting of Mattamy 'Wildflowers' subdivision
- Area of Jean Steckle PS boundary South of Huron Rd. assigned to New School

# Projected Enrolment – Scenario 3

School	Grades	Enrolment						Capacity (OTG)**
		2018	2020	2022	2024	2026	2028	
Jean Steckle PS	JK-8	838	870	895	857	815	777	<b>715</b>
Queen Elizabeth PS	JK-6	247	212	201	198	198	198	358
Southridge PS	JK-6	420	477	528	555	581	583	518
Laurentian PS	7-8	450	450	433	448	414	420	421
New School	JK-8*	411	455	471	499	501	494	669
<b>Total</b>		<b>2366</b>	<b>2464</b>	<b>2528</b>	<b>2557</b>	<b>2509</b>	<b>2472</b>	<b>2635</b>

\*New school will open as JK-7 in 2018, adding Gr. 8 in 2019

\*\*OTG (On-the-ground) capacity. Ministry of Education measure describing school capacity



# Projected Enrolment – Scenario 3

## School/Grade breakdown

### Jean Steckle PS – Regular Track

Year	JK	SK	1	2	3	4	5	6	7	8	Total
2018	83	88	59	64	56	69	72	70	59	90	710
2020	79	90	60	59	61	64	57	71	74	71	685
2022	74	84	58	62	62	59	61	67	59	72	659
2024	73	77	54	58	59	60	61	61	62	66	631
2026	72	76	54	54	55	56	57	62	62	60	607
2028	70	74	53	53	54	51	52	57	58	61	583

### Jean Steckle PS – French Immersion

Year	JK	SK	1	2	3	4	5	6	7	8	Total
2018	0	0	31	36	38	23	0	0	0	0	128
2020	0	0	31	30	30	35	36	22	0	0	184
2022	0	0	28	30	30	29	29	34	35	21	236
2024	0	0	25	27	27	29	29	28	28	33	226
2026	0	0	24	24	24	26	26	28	27	27	208
2028	0	0	23	23	23	23	24	25	25	27	194

# Projected Enrolment – Scenario 3

## School/Grade breakdown

### Queen Elizabeth PS – Regular Track

Year	JK	SK	1	2	3	4	5	6	Total
<b>2018</b>	31	31	27	26	23	32	30	47	<b>247</b>
<b>2020</b>	31	31	26	24	23	23	23	30	<b>212</b>
<b>2022</b>	31	31	26	24	22	22	23	22	<b>201</b>
<b>2024</b>	31	31	26	24	22	22	22	21	<b>198</b>
<b>2026</b>	31	31	26	24	22	22	22	21	<b>198</b>
<b>2028</b>	31	31	26	24	22	22	22	21	<b>198</b>

# Projected Enrolment – Scenario 3

## School/Grade breakdown

### Southridge PS – Regular Track

Year	JK	SK	1	2	3	4	5	6	Total
2018	50	52	24	32	29	28	26	41	281
2020	59	62	37	37	35	37	32	36	335
2022	64	66	41	41	42	36	32	41	363
2024	66	69	44	44	45	37	36	38	379
2026	70	73	48	48	49	39	38	40	405
2028	70	73	48	48	49	40	39	40	407

### Southridge PS – French Immersion

Year	JK	SK	1	2	3	4	5	6	Total
2018	0	0	30	22	18	17	28	25	139
2020	0	0	34	32	27	20	16	14	142
2022	0	0	34	32	31	29	24	16	165
2024	0	0	34	32	31	29	27	23	176
2026	0	0	34	32	31	29	27	23	176
2028	0	0	34	32	31	29	27	23	176

# Projected Enrolment – Scenario 3

## School/Grade breakdown

### Laurentian PS – Regular Track

<b>Year</b>	<b>7</b>	<b>8</b>	<b>Total</b>
<b>2018</b>	199	251	<b>450</b>
<b>2020</b>	230	221	<b>451</b>
<b>2022</b>	220	213	<b>433</b>
<b>2024</b>	208	240	<b>448</b>
<b>2026</b>	203	212	<b>414</b>
<b>2028</b>	206	214	<b>420</b>

# Projected Enrolment – Scenario 3

## School/Grade breakdown

### New School – Regular Track

Year	JK	SK	1	2	3	4	5	6	7	8	Total
2018	48	48	51	40	43	32	36	42	38	0	376
2020	51	51	51	51	54	41	44	34	38	44	455
2022	51	51	51	51	51	49	52	41	44	34	471
2024	50	51	51	51	51	50	50	50	53	42	499
2026	49	49	50	51	51	50	50	50	50	50	501
2028	47	47	48	49	50	51	51	51	51	51	494

# Scenario 3

## Proposed Scenario Transitions

### Southridge PS

- ‘Wildflowers’ community students to attend new school Sept. 2018
  - Option for 2018 Gr. 6 students to finish at Southridge PS (with transportation), no siblings
  - French Immersion – students may remain at Southridge PS for the French Immersion program (with siblings). Transportation will not be provided (In accordance with Board Procedure – 4260 section 15.1)

### Queen Elizabeth PS

- ‘Wildflowers’ community students to attend new school Sept. 2018
  - Option for 2018 Gr. 6 students to finish at Queen Elizabeth PS (with transportation), no siblings

# Scenario 3

## Proposed Scenario Transitions

### Laurentian PS

- 'Wildflowers' community students to attend new school Sept. 2018
  - 2018 Gr. 8 students to finish at Laurentian PS (with transportation), no siblings

### Jean Steckle PS

- 2018 JK- 7 students within 'South of Huron Rd. Community' to attend new school
  - 2018 Gr. 8 students within 'South of Huron Rd. Community' to attend Jean Steckle PS
- 2019 JK- 8 students within 'South of Huron Rd. Community' to attend new school
- 2020 (or beyond) JK- 7 students within 'South of Huron Rd. Community' to attend new school (Tartan Ave.)
- 2021 (or beyond) JK- 8 students within 'South of Huron Rd. Community' to attend new school (Tartan Ave.)

# Scenario 3

## Draft Objectives - Scenario Evaluation

Draft Objective	Comments
Establish school attendance boundary for new Elementary school	<ul style="list-style-type: none"><li>• Yes</li></ul>
Reduce enrolment at Jean Steckle PS	<ul style="list-style-type: none"><li>• Yes. Peak enrolment reduced at Jean Steckle PS by 139 students</li></ul>
Maximize the use of built permanent capacity/Minimize the need for temporary accommodation (portables)	<ul style="list-style-type: none"><li>• Reduces portables at Jean Steckle PS.</li><li>• Accommodates more students in permanent capacity than option 1.</li></ul>
Minimize transitions where changes are proposed	<ul style="list-style-type: none"><li>• Transitions for Queen Elizabeth, Southridge students to new school.</li><li>• Transitions for 'S of Huron Rd.' from Jean Steckle to new school (Seabrook)</li><li>• Transitions for 'S of Huron Rd.' from new school (Seabrook) to new school (Tartan).</li></ul>
*Other	





# Proposed Boundary Study Timeline

## 2017

## 2018



Note: No boundary changes would be implemented prior to September 2018

# Next Steps

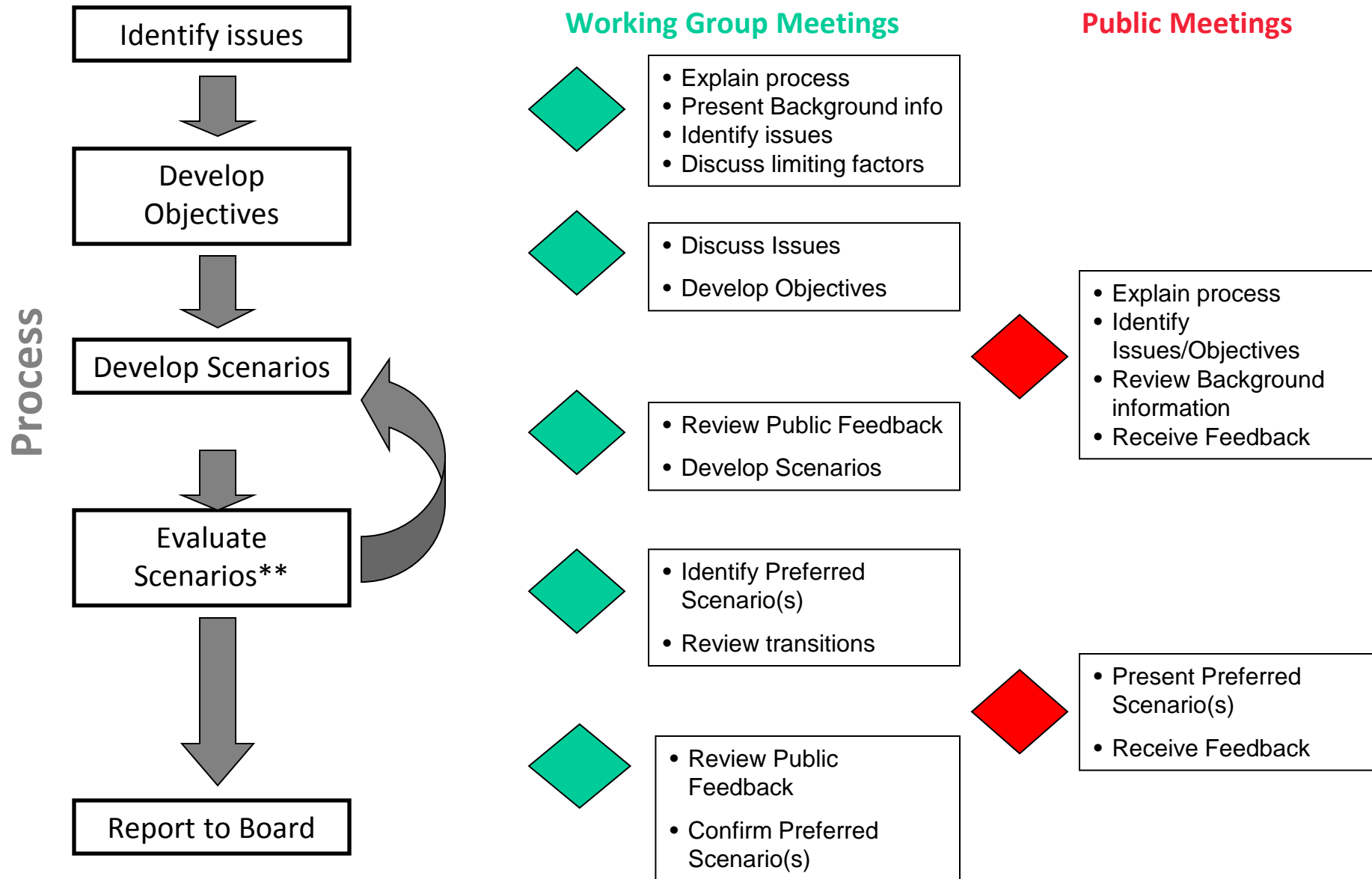
- Confirm objectives
- Refine boundary scenarios based on objectives
- Evaluate scenarios against objectives
- Public/Community meetings

# What is a Boundary Study?

The WRDSB considers a School Boundary Study when considering a change to one or more school attendance areas. There can be a number of reasons for a study:

- Changing the grade structure of an elementary school – this would include changing an elementary school from a JK-6 format to a composite school with JK-8;
- Balancing enrolment and facilities – one school may have too many students for its capacity and another may have too few;
- After municipalities approve new residential development, the area needs to be assigned to a school where capacity exists;
- Opening of a new school and establishing the new boundary and adjusting boundaries of the existing schools in the area

# Boundary Study Process



\*\*Scenario development and evaluation may go through multiple iterations as scenarios are evaluated, and new ideas result from the evaluation.

# What is role of the Working Group members ?

## The Working Group will:

- Identify and discuss issues and opportunities of the individual school communities and the broader community
- Set study objectives
- Develop boundary options (scenarios)
- Evaluate boundary options against study objectives
- Act as a liaison between the Working Group and the school communities

# Working Group Membership

## The Working Group consists of:

- Up to 2 parents from each school
- The Principal from each school
- Planning Staff
- The school area superintendent(s)









# INNOVATING TOMORROW BY EDUCATING TODAY

51 Ardelt Avenue  
Kitchener, ON N2C 2R5  
tel: 519.570.0003  
WEB: WRDSB.CA

