

The background of the slide is a close-up photograph of two hands. One hand is holding a green pencil and is in the process of drawing a green line on a piece of white paper. The other hand is holding the paper steady. The image is overlaid with a semi-transparent blue filter.

SOUTHWEST KITCHENER SECONDARY BOUNDARY STUDY

Working Group Meeting #6

March 19, 2019

Forest Heights CI

AGENDA

AGENDA

New Scenario Review

Scenario Comparison (All)

Round Table

BOUNDARYFEEDBACK@WRDSB.CA

Scenario 1		Scenario 2		Scenario 3		Scenario 4	
Support	Oppose	Support	Oppose	Support	Oppose	Support	Oppose
0	9	5	12	0	5	1	21

New Scenario	Question about Southwood SS	Grandparenting	Walkability
7	4	10	18

FEEDBACK SUMMARY (Post Its)

SUMMARY MATRIX

IN FAVOUR	Walkability/ Transportation	Split Feed	Neighbourhood	Program	Proximity	Total In Favour
Scenario 1	2	0	0	0	1	3
Scenario 2	13	5	0	3	3	24
Scenario 3	1	1	0	0	1	3
Scenario 4	2	0	2	1	1	6
	18	6	2	4	6	36

OPPOSED	Walkability/ Transportation	Split Feed	Neighbourhood	Program	Proximity	Total Opposed
Scenario 1	2	1	3	0	1	7
Scenario 2	11	0	2	0	0	13
Scenario 3	14	7	0	1	0	22
Scenario 4	4	0	0	0	0	4
	31	8	5	1	1	46

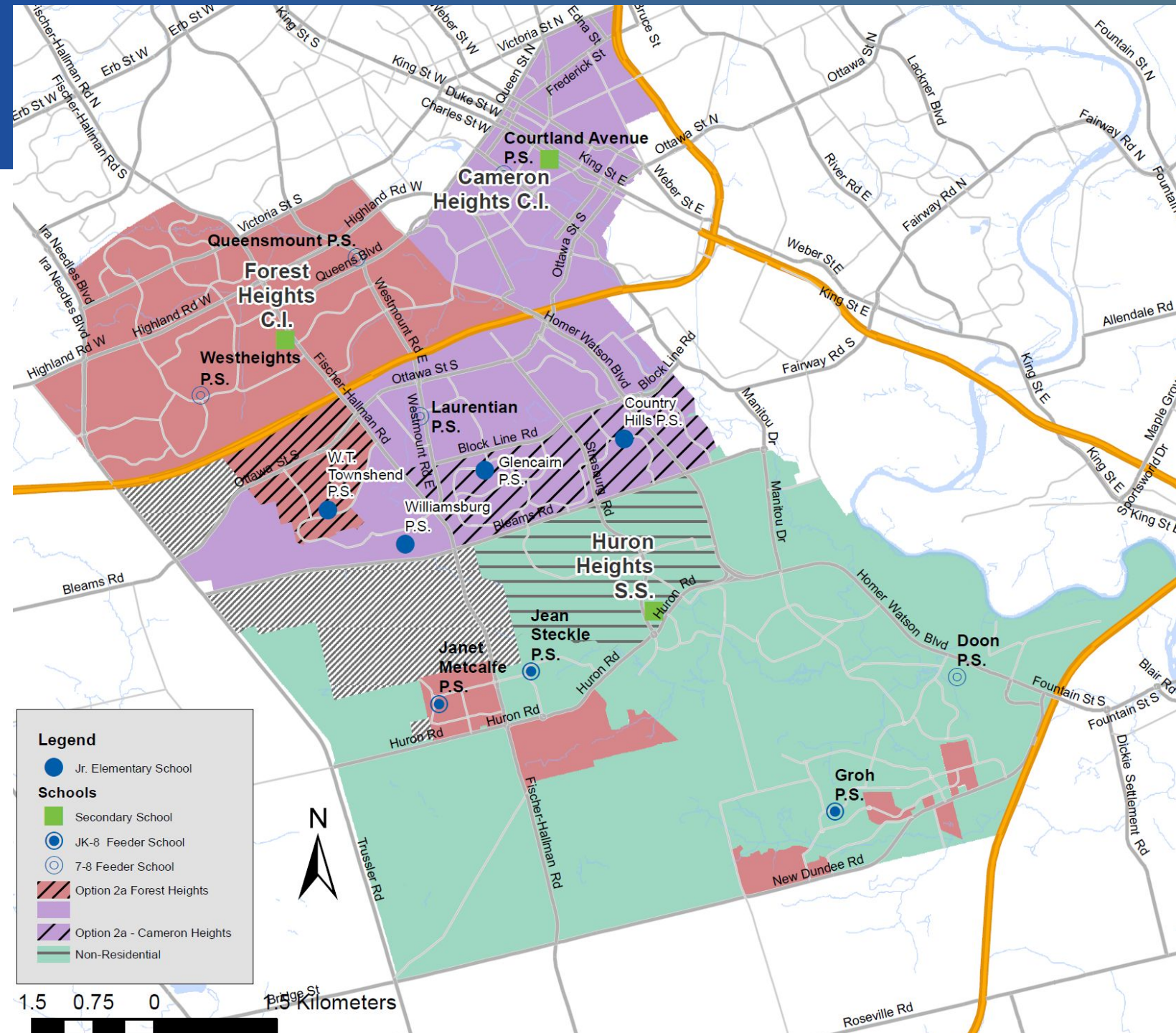
Total Comments	49	14	7	5	7	82
-----------------------	-----------	-----------	----------	----------	----------	-----------

Note: Grandparenting comments not included because general comments not in favour or opposed

Reassign WT Townshend to Forest Heights

Williamsburg Remains at Cameron Heights

Reassign Glencairn and Country Hills to Cameron Heights



SCENARIO 2a ENROLMENT PROJECTIONS

Scenario 2a - Reassign WT Townshend to Forest Heights, Glencairn and Country Hills to Cameron Heights

School	Grades	2018 OTG Plus Portable Capacity			Enrolment (ADE)/ Utilization (%)**					
		OTG	Port Cap*	Total Cap (OTG+Ports)	2018	2020	2022	2024	2026	2028
CHCI	9-12	1596	6	1722	1778	1868	1895	1936	1889	1871
					111%	117%	119%	121%	118%	117%
FHCI	9-12	1272	12	1524	1046	1362	1474	1583	1582	1555
					82%	107%	116%	124%	124%	122%
HHSS	9-12	1224	18	1602	1522	1481	1497	1525	1584	1611
					124%	121%	122%	125%	129%	132%

*Portable capacities are based on the current site conditions. In some cases, things like electrical upgrades may increase the amount of portables that can be accommodated at a given site. Portable capacities are provided for information purposes only and are subject to change.

**Utilization calculated using On-the-Ground (OTG) Capacity

SCENARIO 2a IMPACTS

Split Feed

- Laurentian PS loses split to HHSS (reduction)
- Queensmount remains split between CHCI and FHCI (no change)

Development Area

- N/A

Program

- Forest Heights CI offers Extended French
 - WT Townshend has FI; may continue French studies at home school

SCENARIO 2a TRANSPORTATION IMPACTS

- # buses TBD

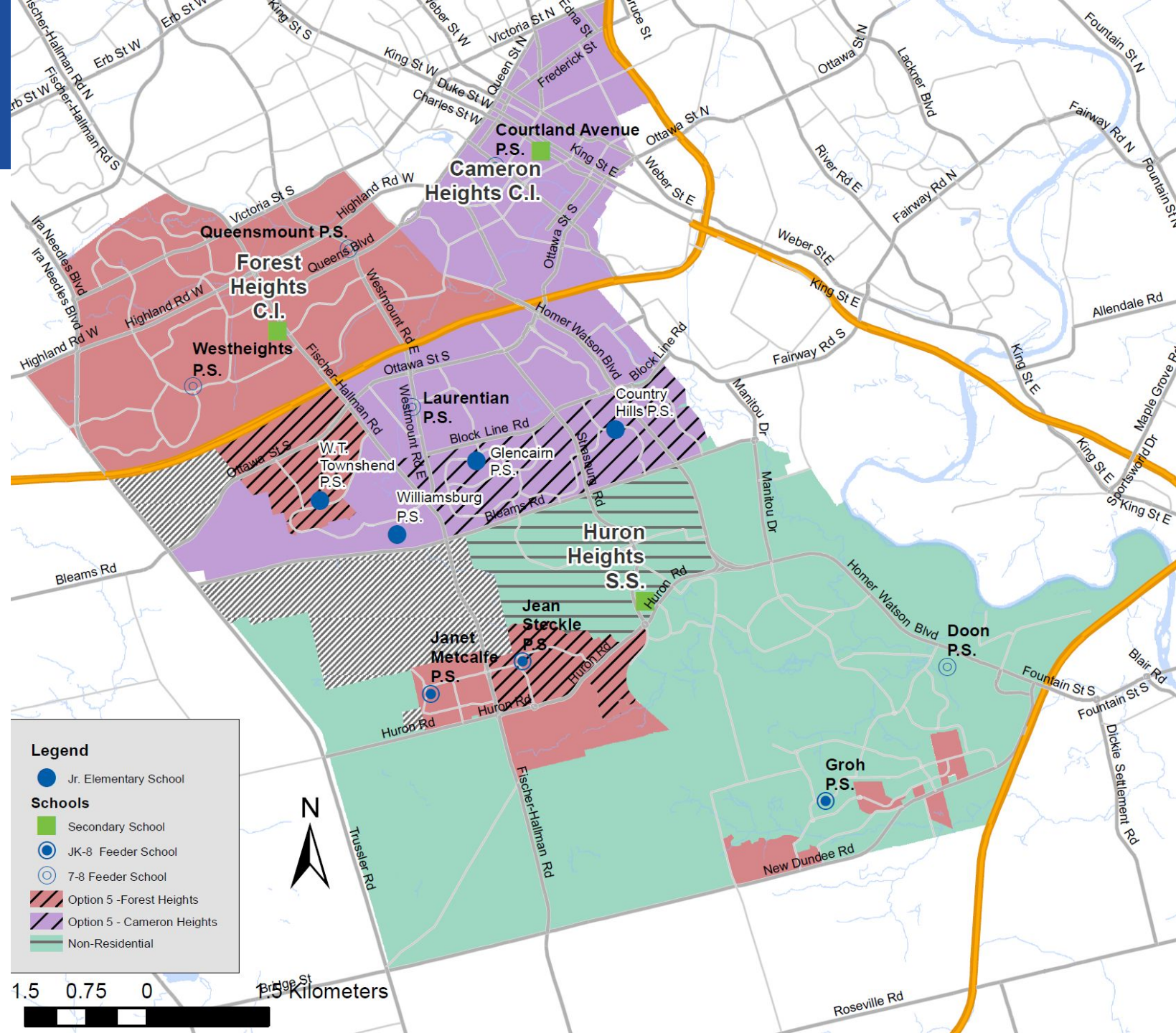
SCENARIO 5 MAP *NEW*

Reassign WT Townshend
to Forest Heights

Reassign Jean
Steckle/Huron Woods to
Forest Heights

Williamsburg Remains at
Cameron Heights

Reassign Glencairn and
Country Hills to Cameron
Heights



SCENARIO 5 ENROLMENT PROJECTIONS

Scenario 5 - Reassign WT Townshend to Forest Heights, Reassign Jean Steckle to Forest Heights, Reassign Glencairn and Country Hills to Cameron Heights

School	Grades	2018 OTG Plus Portable Capacity			Enrolment (ADE)/ Utilization (%)**					
		OTG	Port Cap*	Total Cap (OTG+Ports)	2018	2020	2022	2024	2026	2028
CHCI	9-12	1596	6	1722	1778	1868	1895	1936	1889	1871
					111%	117%	119%	121%	118%	117%
FHCI	9-12	1272	12	1524	1046	1680	1771	1920	1942	1926
					82%	132%	139%	151%	153%	151%
HHSS	9-12	1224	18	1602	1522	1200	1224	1153	1173	1182
					124%	98%	100%	94%	96%	97%

*Portable capacities are based on the current site conditions.

In some cases, things like electrical upgrades may increase the amount of portables that can be accommodated at a given site. Portable capacities are provided for information purposes only and are subject to change.

**Utilization calculated using On-the-Ground (OTG) Capacity

SCENARIO 5 IMPACTS

Split Feed

- Janet Metcalfe PS loses split to HHSS (reduction)
- Laurentian PS loses split to HHSS (reduction)
- Queensmount PS continues to be split between CHCI and FHCI (no change)

Development Area

- Jean Steckle PS, Janet Metcalfe PS and Huron South Development Areas shares a common secondary school boundary

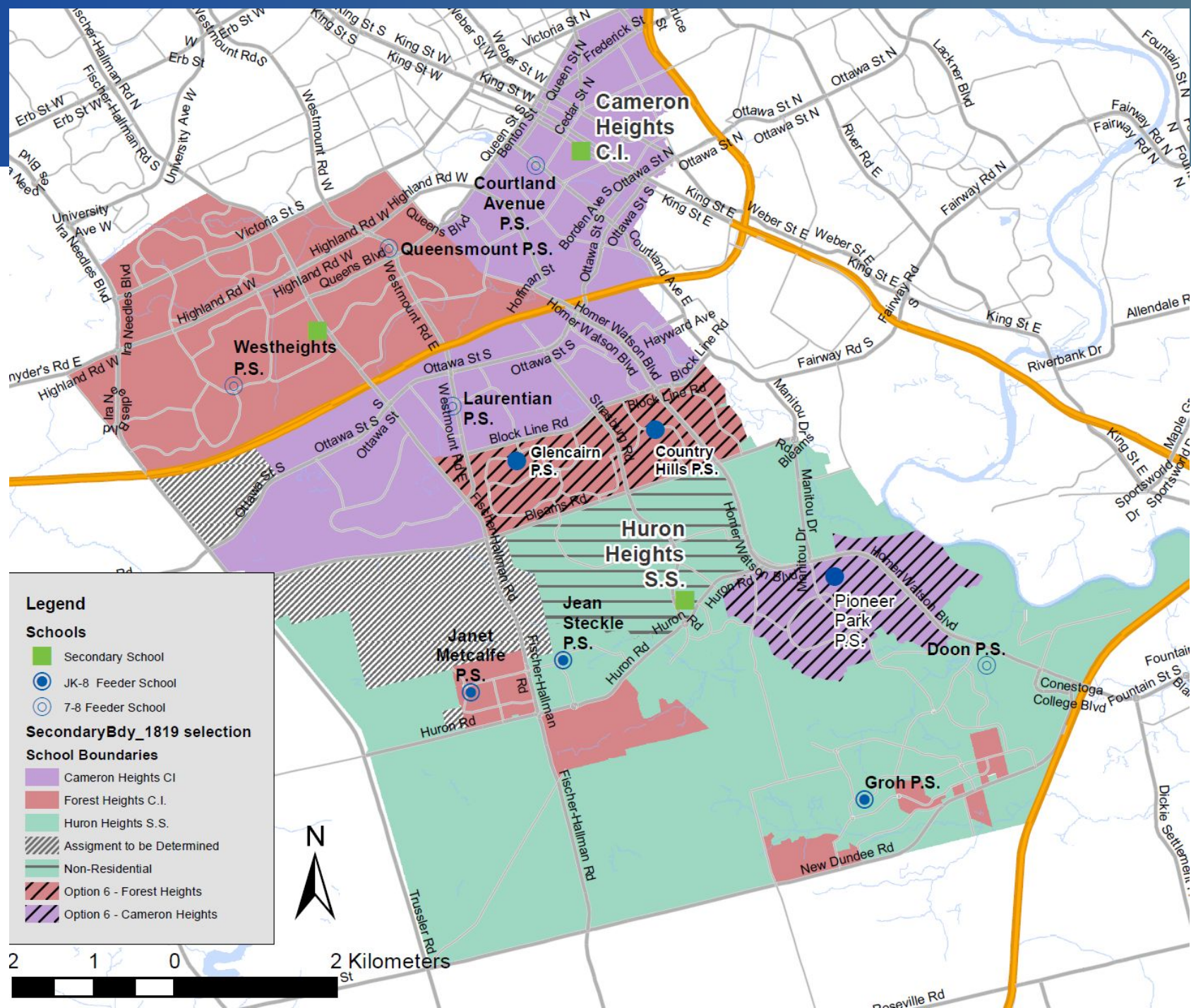
Program

- Forest Heights CI offers Extended French
 - Jean Steckle PS offers French Immersion; may continue French studies at home school

SCENARIO 5 TRANSPORTATION IMPACTS

- # buses TBD

Reassign Glencairn and Country Hills to Forest Heights



SCENARIO 6 ENROLMENT PROJECTIONS

Scenario 6 - Reassign Pioneer Park area to Cameron Heights, Reassign Glencairn and Country Hills to Forest Heights

School	Grades	2018 OTG Plus Portable Capacity			Enrolment (ADE)/ Utilization (%)**					
		OTG	Port Cap*	Total Cap (OTG+Ports)	2018	2020	2022	2024	2026	2028
CHCI	9-12	1596	6	1722	1778	1942	1907	1906	1849	1806
					111%	122%	119%	119%	116%	113%
FHCI	9-12	1272	12	1524	1046	1454	1633	1767	1768	1760
					82%	114%	128%	139%	139%	138%
HHSS	9-12	1224	18	1602	1522	1283	1306	1348	1412	1449
					124%	105%	107%	110%	115%	118%

*Portable capacities are based on the current site conditions.

In some cases, things like electrical upgrades may increase the amount of portables that can be accommodated at a given site. Portable capacities are provided for information purposes only and are subject to change.

**Utilization calculated using On-the-Ground (OTG) Capacity

SCENARIO 6 IMPACTS

Split Feed

- Doon PS additional split to CHCI added (increase in splits)
- Laurentian PS loses split to HHSS (reduction)

Development Area

- N/A

Program

- N/A

SCENARIO 6 TRANSPORTATION IMPACTS

- All students would be transported to Forest Heights
- Area is currently transported to Huron Heights
- # buses *TBD*
- Infrastructure upgrades may be required to accommodate extra buses at Forest Heights

SCENARIO ACTIVITY *(Deferred)*

Scenario Matrix	New Buses Required	Walkability	Contiguous Boundary	Intermediate Split Feeds	Huron Heights Enrolment 2024	Forest Heights Enrolment 2024	Cameron Heights Enrolment 2024	Additional Considerations	
	<i>Does the scenario reduce the number of new buses required to transport students to school?</i>	<i>Does the scenario increase the number of students walking to school?</i>	<i>Does the scenario provide for less fragmented boundaries? Are the reassigned areas proximate to the home school?</i>	<i>Does the scenario reduce the number of intermediate to secondary split feeds?</i>	<i>Projected ADE Enrolment in 2024</i>	<i>Projected ADE Enrolment in 2024</i>	<i>Projected ADE Enrolment in 2024</i>		

Select a the best and worst scenario for each of the columns.

Each person should place one red and one green dot for each of the columns.

Do your rough work on your individual sheet and then place your dots on the poster.

WORST

BEST

ROUND TABLE





INNOVATING TOMORROW BY EDUCATING TODAY

51 Ardelt Avenue
Kitchener, ON N2C 2R5
tel: 519.570.0003
WEB: WRDSB.CA



[FACEBOOK.COM/WRDSB](https://www.facebook.com/WRDSB)



[TWITTER.COM/WRDSB](https://twitter.com/WRDSB)



[INSTAGRAM.COM/WR_DSB](https://www.instagram.com/WR_DSB)



[YOUTUBE.COM/WRDSBVIDEO](https://www.youtube.com/WRDSBVIDEO)