



SOUTHWEST KITCHENER SECONDARY BOUNDARY STUDY

Working Group Meeting #3

January 8, 2019

AGENDA (Revised)

Introductions

Review and Approval of Minutes

December 11, 2018 - Meeting #2

Public Meeting #1 Date and Time (moved up on agenda)

Review Draft Objectives

New Development Area Assignment

Communications Update

Review Data Requests

Historical Boundary Map

Transportation Data

Feeder School Chart

Study Area Enrolment

Round Table

PUBLIC MEETING

Date: Tuesday, February 5, 2019

Time: 7:00-9:00 PM

Location: Huron Heights SS?

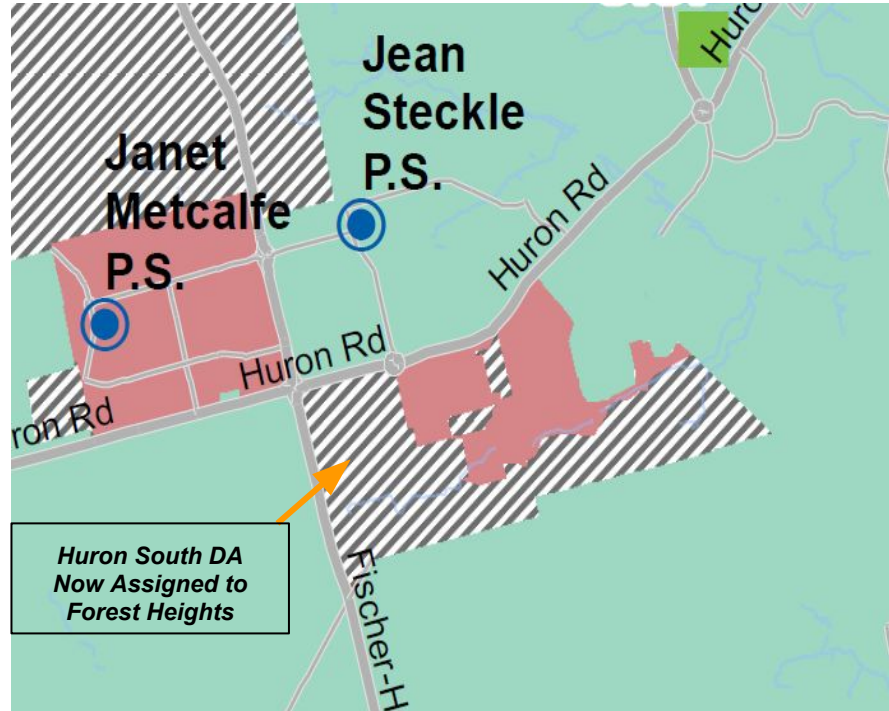
SCHOOL COMMUNITY ISSUES (MENTI)



DRAFT BOUNDARY STUDY OBJECTIVES

- efficiency of transportation (students within walking distance, bus routes)
- permanent capacity of schools and/or future construction requirements (e.g., site, program spaces, safety)
- impact on feeder and surrounding schools (i.e., Grade 8 students moving to secondary school)
- minimizing the impact on students where changes are proposed (e.g., consideration for grandfathering, phased implementation)

NEW DEVELOPMENT AREA ASSIGNMENT - HURON SOUTH

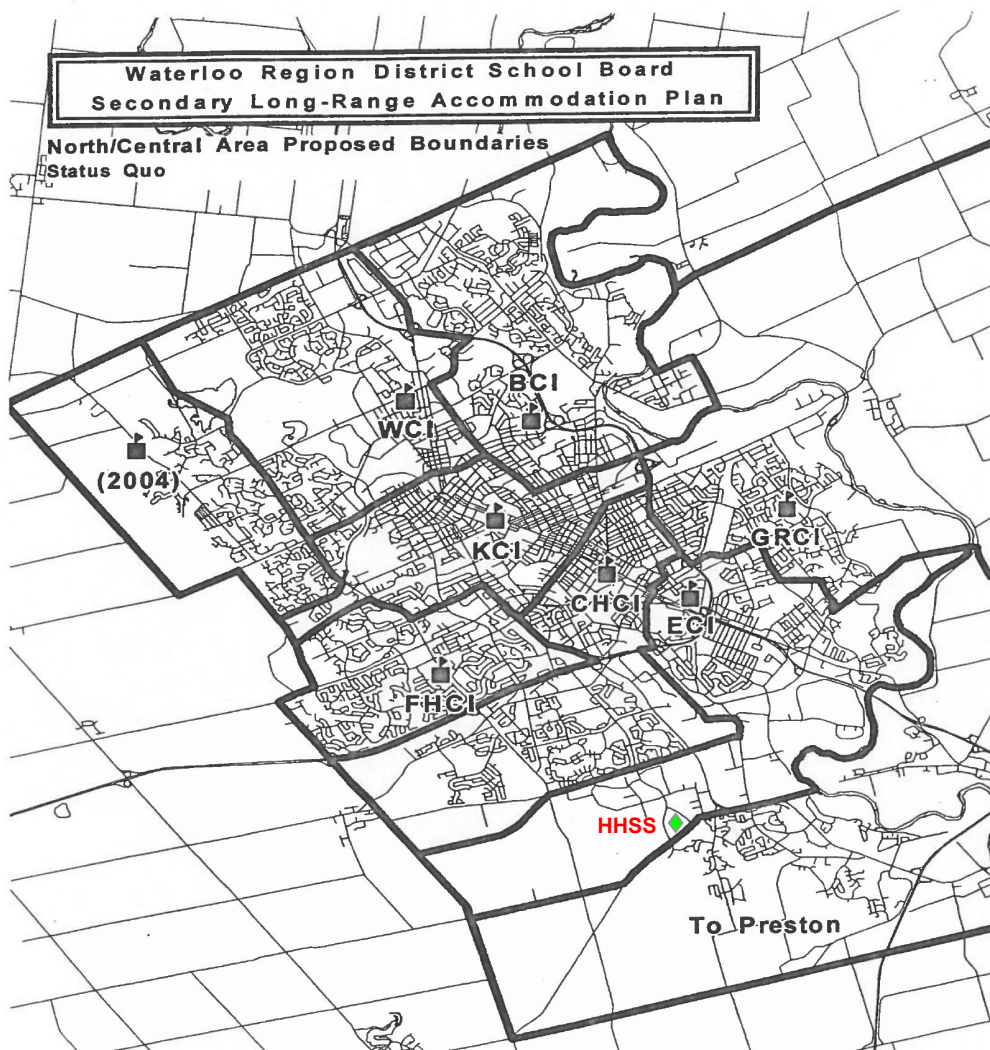


	2018 Capacity	Enrolment (ADE*)/Utilization (%) REVISED JAN 2019				
School	OTG	2020	2022	2024	2026	2028
CHCI	1596	1760	1735	1756	1707	1672
		110%	109%	110%	107%	105%
FHCI	1272	1115	1221	1348	1362	1355
		88%	96%	106%	107%	107%
HHSS	1224	1814	1909	1957	2002	2023
		148%	156%	160%	164%	165%

COMMUNICATIONS UPDATE

- Principals from all JK-6 feeder schools associated with the Boundary Study will be informing School Councils of the review
- JK-6 feeder schools have been added to web post notifications
- Presentation to Cameron Heights staff scheduled for January 14, 2019

HISTORICAL BOUNDARIES

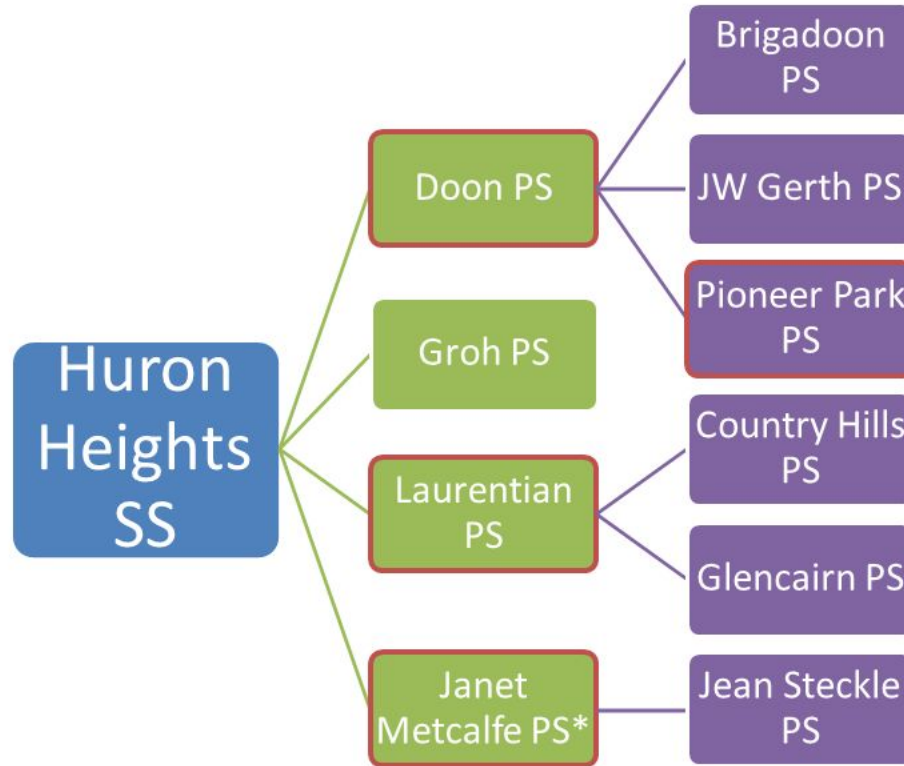


TRANSPORTATION DATA

School	Number Eligible for Bus	Percent Eligible for Bus	Number of Buses
Cameron Heights	883	49%	23
Forest Heights	70	6%	8
Huron Heights	750	49%	27

*Number of buses includes Special Education and Taxis

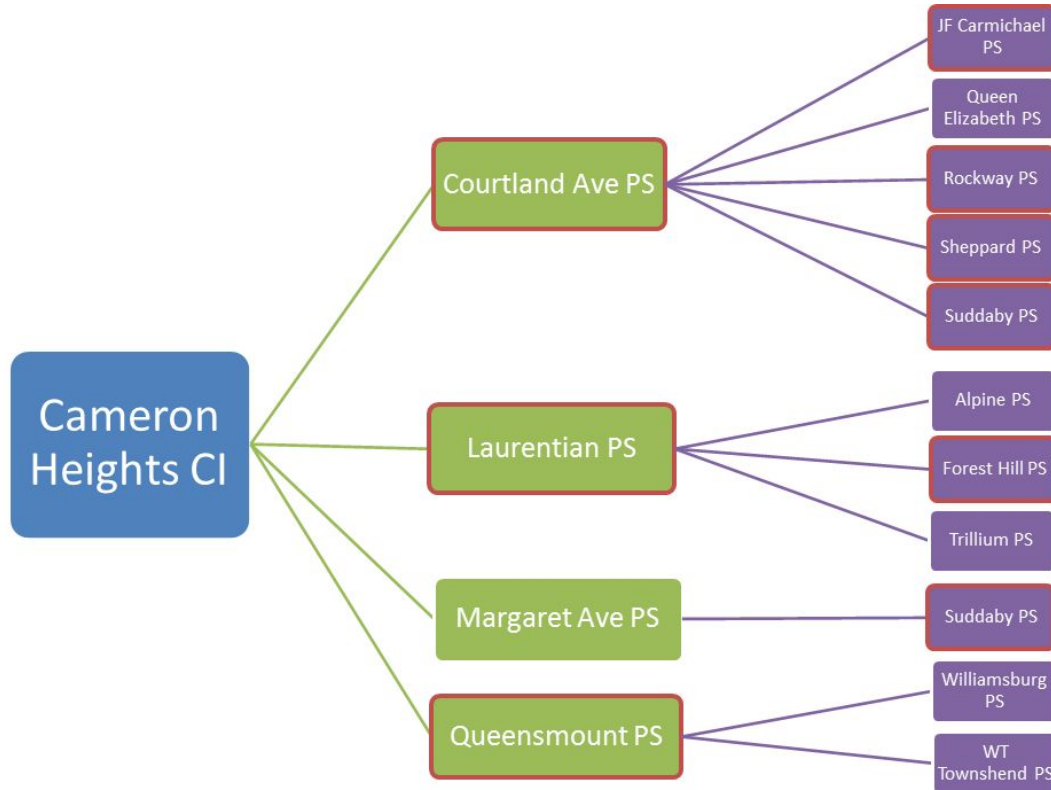
FEEDER SCHOOL CHART



Note: Red outline indicates split feed where students feed to two different intermediate or secondary schools

*Janet Metcalfe PS will have full JK-8 program in 2019/20

FEEDER SCHOOL CHART



Note: Red outline indicates split feed where students feed to two different intermediate or secondary schools

*Janet Metcalfe PS will have full JK-8 program in 2019/20

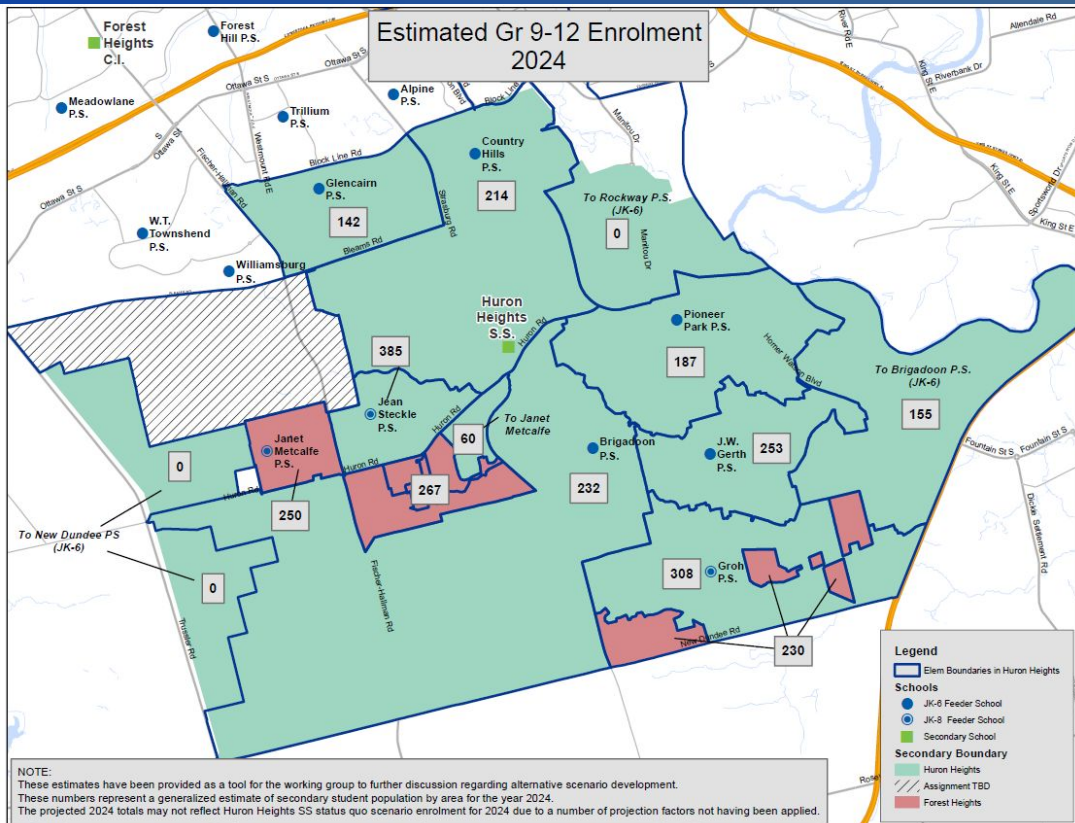
FEEDER SCHOOL CHART



Note: Red outline indicates split feed where students feed to two different intermediate or secondary schools

*Janet Metcalfe PS will have full JK-8 program in 2019/20

STUDY AREA ENROLMENT



ROUND TABLE





INNOVATING TOMORROW BY EDUCATING TODAY

51 Ardelt Avenue
Kitchener, ON N2C 2R5
tel: 519.570.0003
WEB: WRDSB.CA



[FACEBOOK.COM/WRDSB](https://www.facebook.com/WRDSB)



[TWITTER.COM/WRDSB](https://twitter.com/WRDSB)



[INSTAGRAM.COM/WR_DSB](https://www.instagram.com/WR_DSB)



[YOUTUBE.COM/WRDSBVIDEO](https://www.youtube.com/WRDSBVIDEO)