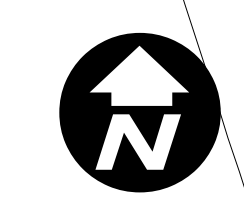
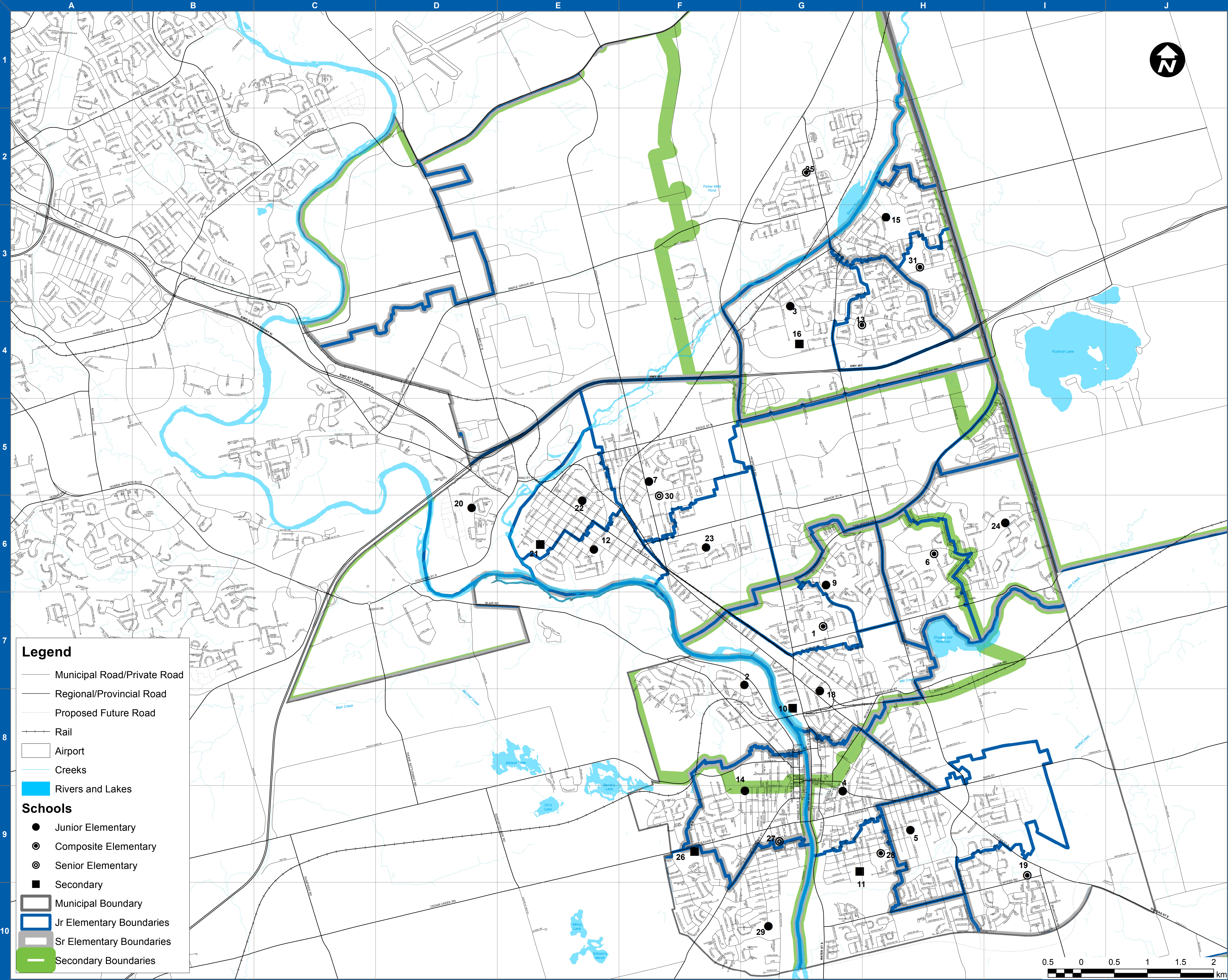




# WRDSB SCHOOLS CAMBRIDGE 2014/15



**Legend**

- Municipal Road/Private Road
- Regional/Provincial Road
- Proposed Future Road
- Rail
- Airport
- Creeks
- Rivers and Lakes

**Schools**

- Junior Elementary
- ⊙ Composite Elementary
- ⊕ Senior Elementary
- Secondary

▭ Municipal Boundary  
 ▭ Jr Elementary Boundaries  
 ▭ Sr Elementary Boundaries  
 ▭ Secondary Boundaries

NAME	GRADES	MAP #	GRID REFERENCE
<b>Avenue Road P.S.</b> 40 GAIL ST	JK-8	1	G-7
<b>Blair Road P.S.</b> 85 SUNSET BLVD	JK-6	2	G-7
<b>Centennial P.S.</b> 100 WEAVER ST	JK-6	3	G-4
<b>Central P.S.</b> 175 MAIN ST	JK-6	4	G-9
<b>Chalmers Street P.S.</b> 35 CHALMERS ST S	JK-6	5	H-9
<b>Clemens Mill P.S.</b> 335 SAGINAW PKWY	JK-8	6	H-6
<b>Coronation P.S.</b> 757 CONCESSION RD	JK-6	7	F-5
<b>Elgin Street P.S.</b> 685 ELGIN ST N	JK-6	9	G-6
<b>Galt C.I.</b> 200 WATER ST N	9-12	10	G-8
<b>Glenview Park S.S.</b> 55 MCKAY ST	9-12	11	G-9
<b>Grand View P.S.</b> 1144 HAMILTON ST	JK-6	12	E-6
<b>Hespeler P.S.</b> 300 WINSTON BLVD	JK-8	13	G-4
<b>Highland P.S.</b> 125 SALISBURY AVE	JK-5	14	G-9
<b>Hillcrest P.S.</b> 31 RENWICK AVE	JK-6	15	H-3
<b>Jacob Hespeler S.S.</b> 355 HOLIDAY INN DR	9-12	16	G-4
<b>Manchester P.S.</b> 455 DUNDAS ST	JK-6	18	G-8
<b>Moffat Creek P.S.</b> 710 MYERS RD	JK-8	19	I-9
<b>Parkway P.S.</b> 436 PRESTON PKWY	JK-6	20	D-6
<b>Preston H.S.</b> 550 ROSE ST	9-12	21	E-6
<b>Preston P.S.</b> 210 WESTMINSTER DR N	JK-6	22	E-6
<b>Ryerson P.S.</b> 749 GRAND VALLEY DR	JK-6	23	F-6
<b>Saginaw P.S.</b> 740 SAGINAW PKWY	JK-6	24	I-6
<b>Silverheights P.S.</b> 390 SCOTT RD	JK-8	25	G-2
<b>Southwood S.S.</b> 30 SOUTHWOOD DR	9-12	26	F-9
<b>St. Andrew's P.S.</b> 65 VICTORIA AVE	6-8	27	G-9
<b>Stewart Avenue P.S.</b> 145 STEWART AVE	JK-8	28	H-9
<b>Tait Street P.S.</b> 184 TAIT ST	JK-6	29	G-10
<b>William G. Davis P.S.</b> 530 LANG'S DR	7-8	30	F-5
<b>Woodland Park P.S.</b> 555 ELLIS RD	JK-8	31	H-3

